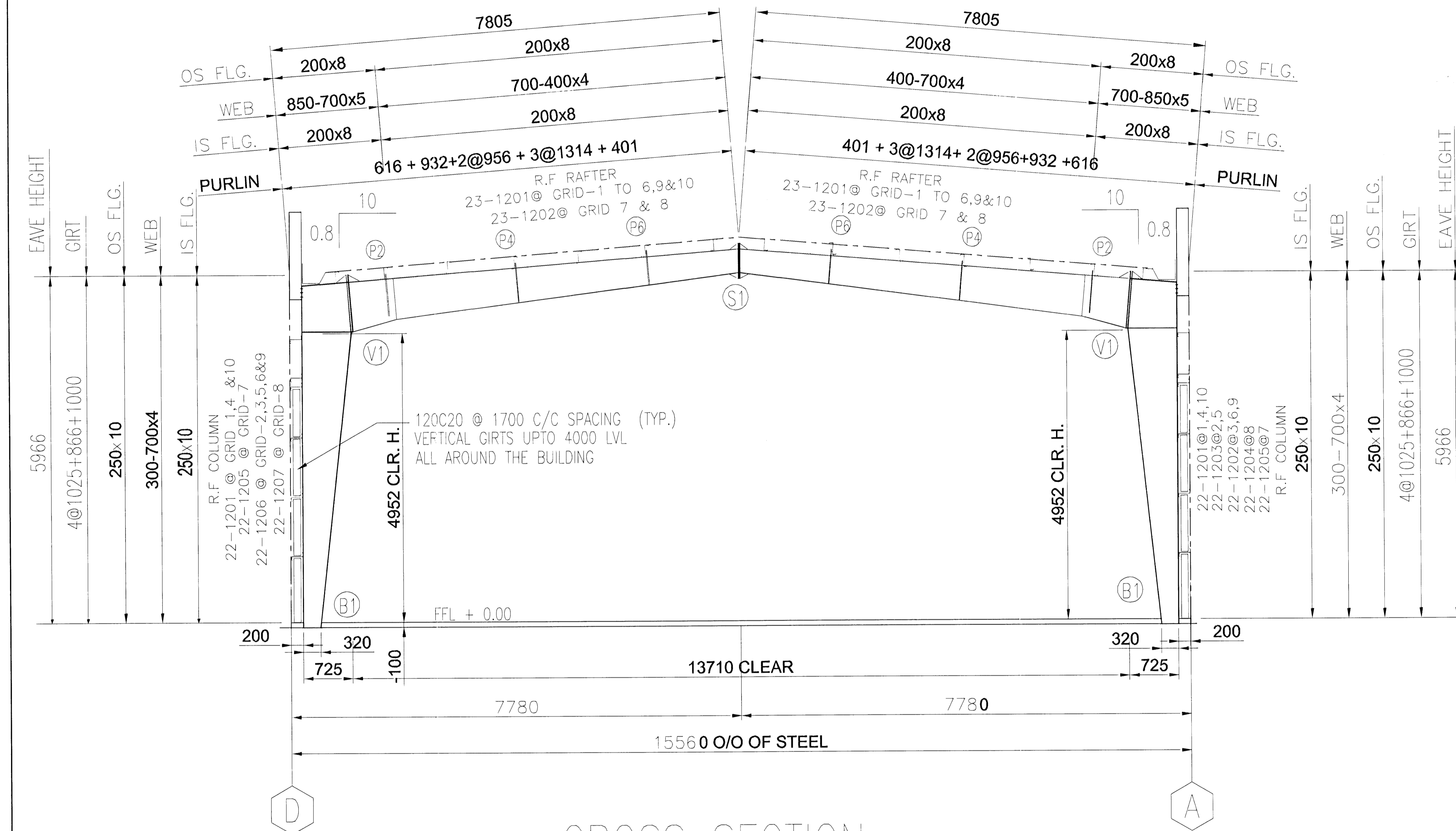


CROSS SECTION SCHEDULE (LEFT FROM RIDGE)					
BOLT SCHEDULE				FLANGE BRACE	
CONN	QTY	SIZE	LENGTH	MARK	PART MARK
(B1)	4	M20	500	(P2)	07-5033
(K1)	10	M24	70	(P4)	07-0305
(S1)	8	M16	70	(P6)	07-5017
				FLANGE BRACE FROM GL-1 TO 6	
				(P2)	07-0315
				(P4)	07-0320
				(P6)	07-0305

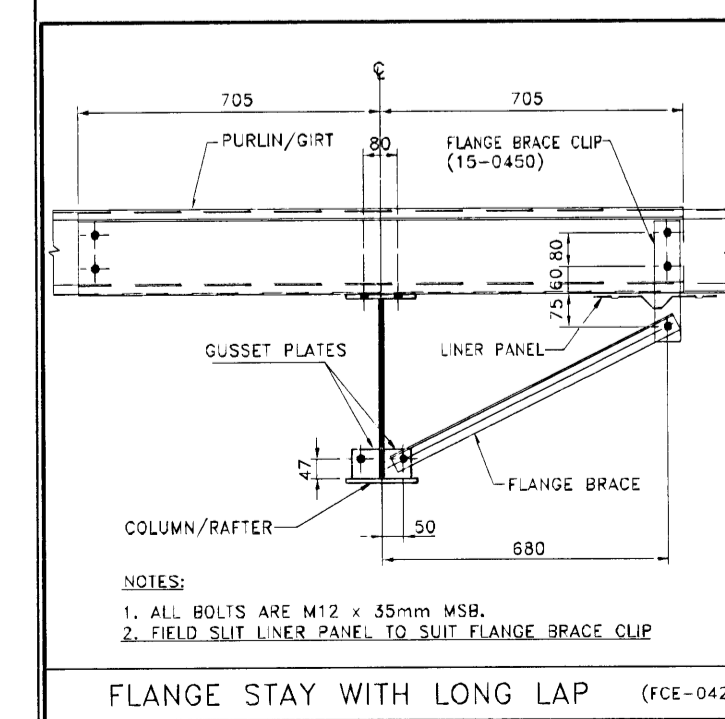
CROSS SECTION SCHEDULE (RIGHT FROM RIDGE)					
BOLT SCHEDULE				FLANGE BRACE	
CONN	QTY	SIZE	LENGTH	MARK	PART MARK
(B1)	4	M20	500	(P2)	07-5033
(K1)	10	M24	70	(P4)	07-0305
				(P6)	07-5017
				FLANGE BRACE FROM GL-1 TO 6	
				(P2)	07-0315
				(P4)	07-0320
				(P6)	07-0305

IMPORTANT NOTES

- 1 - High strength bolts (HSB) are galvanized while mild steel bolts (MSB) are electro plated (yellow chromate conversion). These bolts are marked on the heads so that they can be easily identified.
- 2 - The correct type of bolts must be used as called for on the details. Using wrong type of bolts may cause building failure at the erector's responsibility.
- 3 - Continuous machine submerged arc weldings (S.A.W.) meet the applicable requirements of the American Welding Society (A.W.S.) D1.1-2004.
- 4 - Web-to-flange welds are single side fillet welds in accordance with the ninth edition of the AISC Table J2.4 Page 5-67 unless noted otherwise.
- 5 - Web-butt welds are complete penetration using flux back-up (16mm plate max.)
- 6 - Flange butt welds are on both sides with copper back-up. Flanges 19mm or thicker are beveled prior to assembly.
- 7 - Gusset plates for flange braces are welded on both sides of the column and rafter, however flange braces are required at one side (unless noted otherwise). For aesthetic reasons, it is preferable to install them all at the same side of column and rafter. The side chosen depending on erection sequence.



CROSS SECTION
AT GRID 1-10



Samþykkt þann
01 DEC 2008
Byggingafulltrúinn í Hafnafirði
Rh. Hrólfur S. Gunnlaugsson

Samþ 30/7 '08
Fh. VST Hf. Hrólfur Hórisson 507946-929

NO.	DATE	DESCRIPTION	DRN	CHK	DSN
3	07.06.2008	ISSUED FOR CONSTRUCTION	ASU	AVP	TMM
2	18.03.2008	RE-ISSUED FOR APPROVAL	HKS	REN	TMM
1	27.11.2007	RE-ISSUED FOR APPROVAL	HKS	REN	RMR
0	08.10.07	ISSUED FOR APPROVAL	SAK	REM	RMR

ZAMIL STEEL ENGINEERING DEPARTMENT

ZS JOB NO. : V7-D568	BUILDING NO.: 01
PROJECT NAME : SIBERIA HOUSE	
CUSTOMER : HEDINN	
JOBSITE LOCATION : HAFNAFIRDI, ICELAND	
DRAWING TITLE : CROSS SECTION	DRAWING NO. : E01