

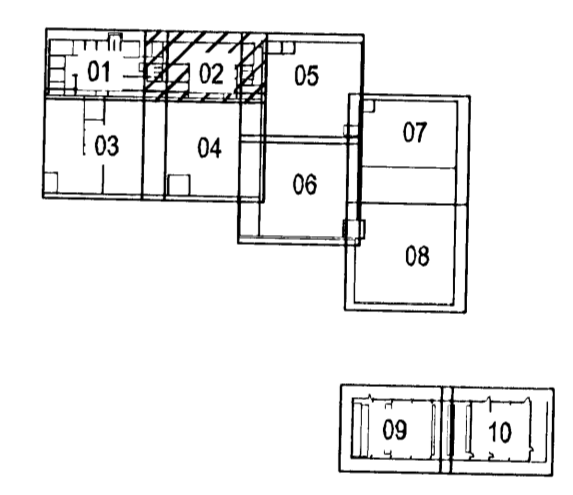
INNGANGUR
STARFSMÁNNA

Hönnuður:
ARI, HAS
Yfirfarir:

Samþykkt: Davíð Sólvason kt. 100356-3339

Breytingar:

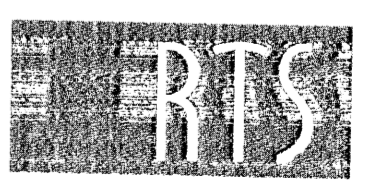
Lykilmynd



Aðalhönnuður:
ASK
18. apríl 2003
Hönnuður: Hanne M. Hansen

Héðinn
Gjáhella 4
221 Hafnarfjörður

Lagnaleiðir, rennur, stigar
1. hæð
Mkv: 1:50



VERKFRÆÐISTOFA

Grensásvegur 3
108 Reykjavík
Sími 520 9900
Fax 520 9901
www.rts.is



FS 88/44

32-2166-1-
03.04.2008

011402

A

