

IMPORTANT NOTES

- 1 - Roof Panels Type = TYPE-R
Thickness = 0.5 (STEEL)
Color = FROST WHITE
- 2 - Panels are to be field cut to suit openings
- 3 - Trims are provided in Zamil Steel standard lengths. Trims quantities are provided to cover the whole length of the trim using 150 mm end laps. Refer to detail TRE-010 at the roof sheeting plan. If lap length specified (150mm) is exceeded during erection then shortage in length may result. If the lap length is reduced then leakage and appearance problems may result.
Always cut any excess trim length at the end of trim line.

4 - SITE STORAGE INSTRUCTIONS

All products are dispatched from our factory in good condition. To maintain this condition, we recommend that the bundles of sheets, purlins or channels are stored 150mm clear of the ground, with a slope of 1:25, to allow for water drainage. Cover the stack with a waterproof cover, leaving the ends open to allow for air circulation.

Upon receipt, it is recommended that bundles of panels be checked. If any water is entrapped between sheets, the sheets should be carefully dried, and then re-stacked allowing for air circulation.

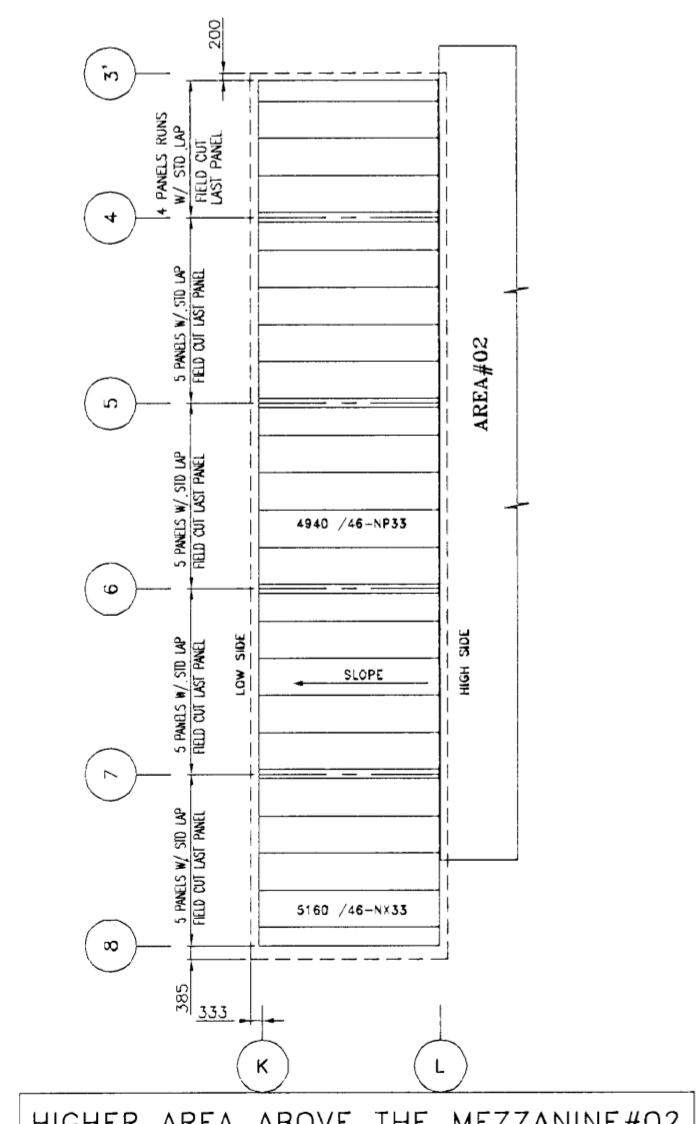
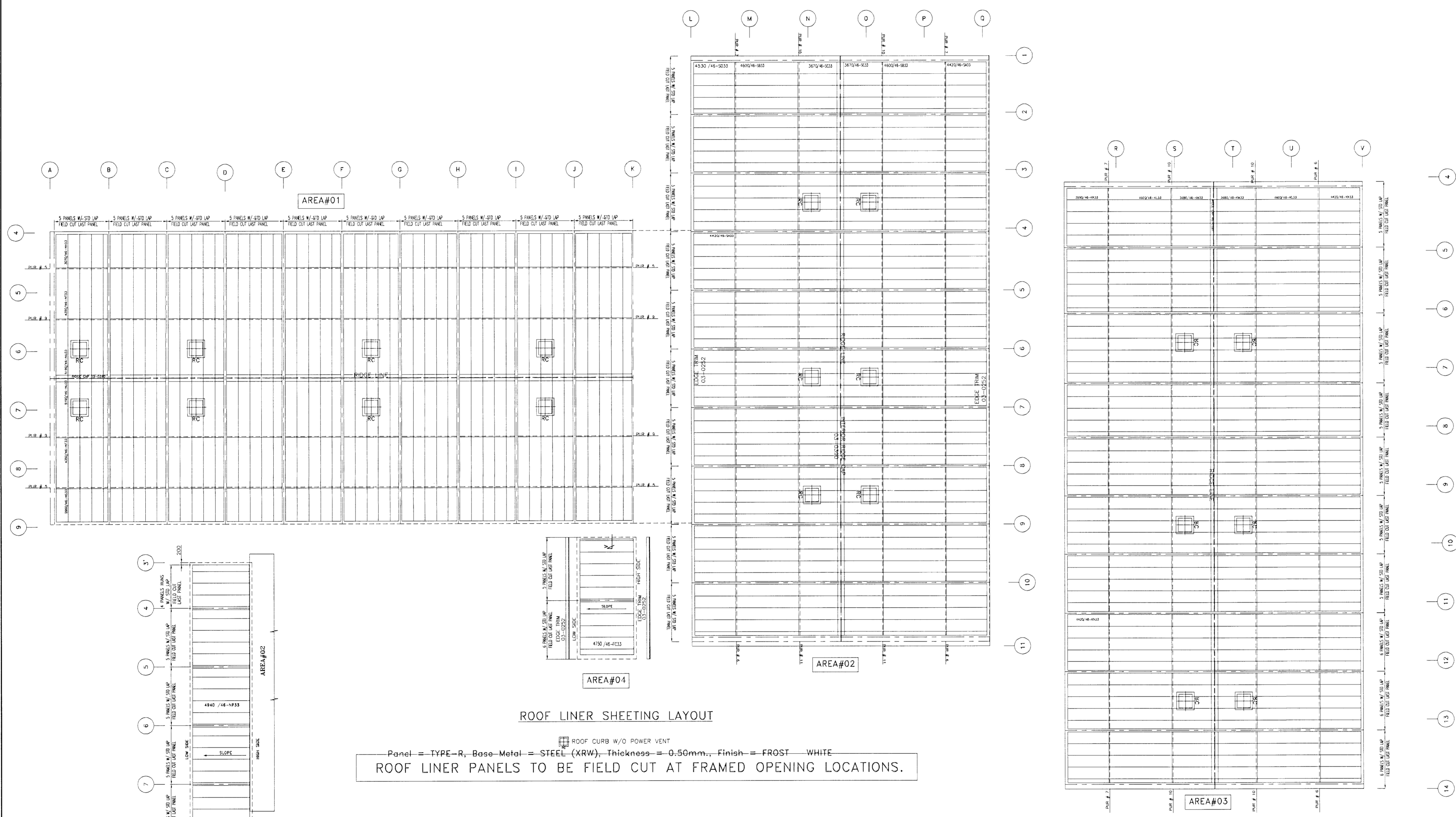
It is recommended that panels be installed as soon as possible after delivery. Extended site storage is not recommended.

Zamil Steel accepts no responsibility for staining of Galvanized, Zincalume or Aluminium products, or deterioration of Painted products due to incorrect site storage.

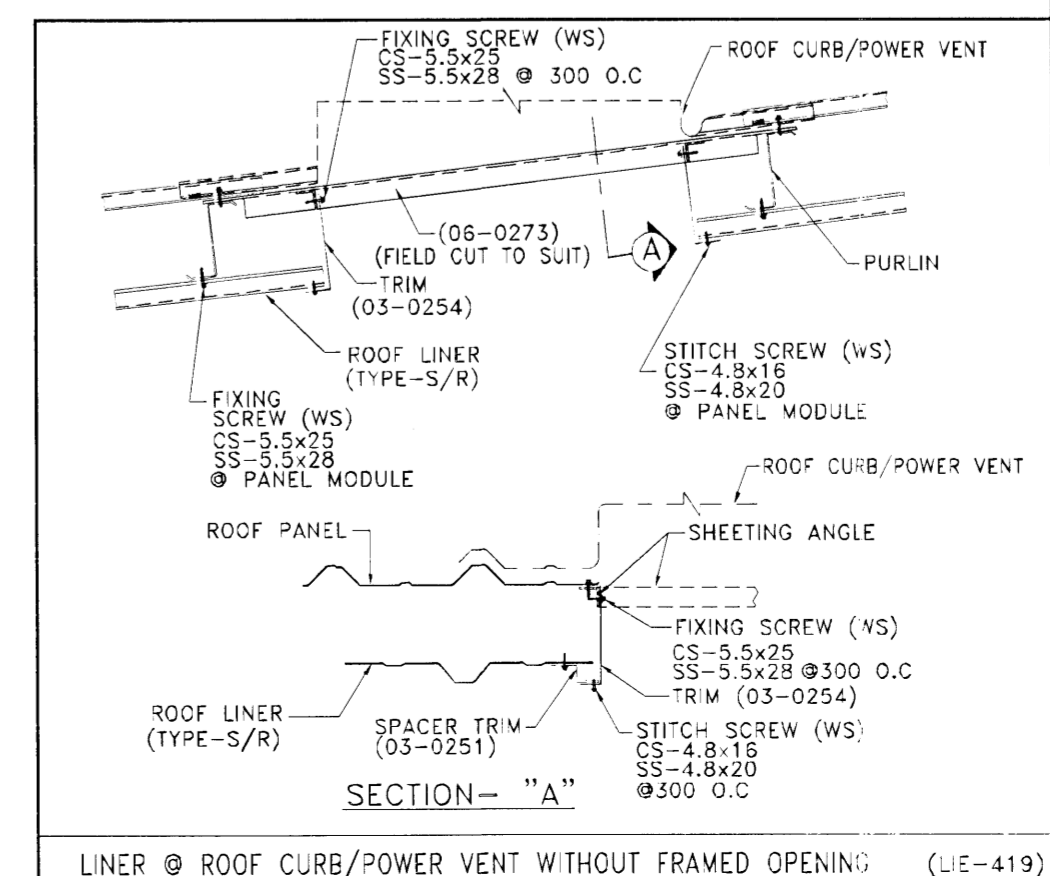
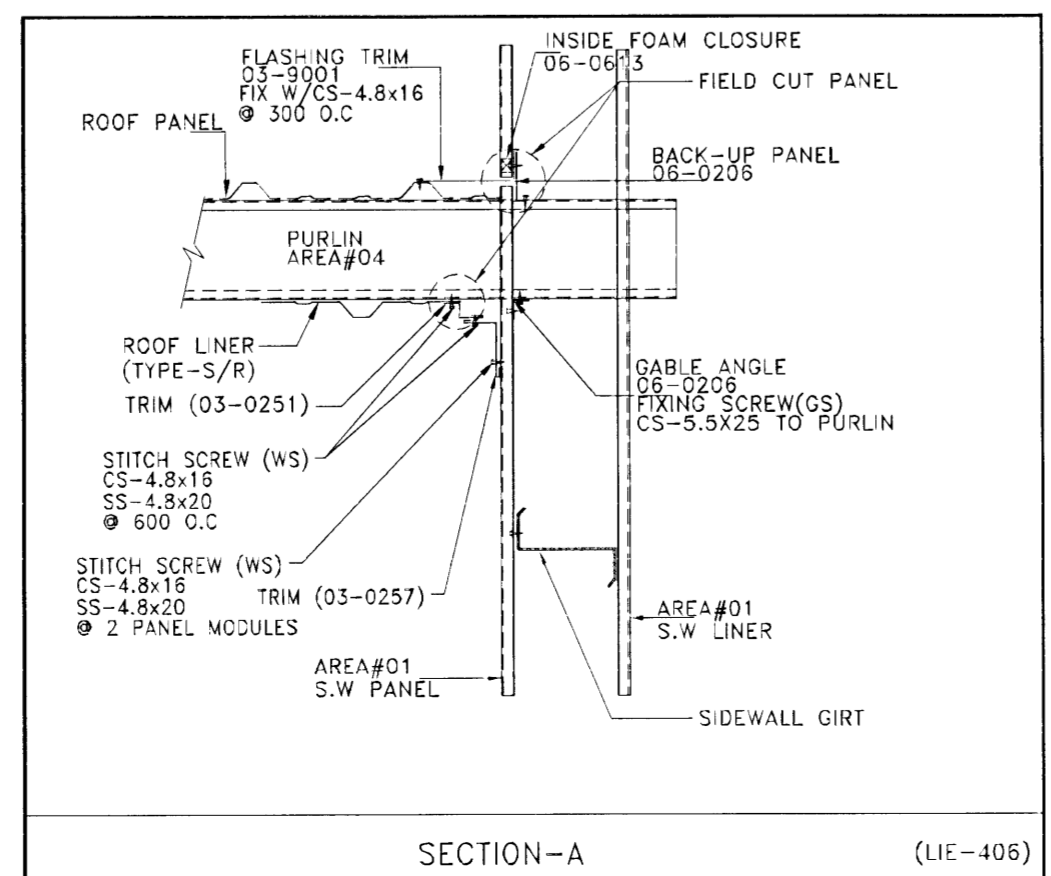
Samþykkt þann
24 JUNI 2008
Byggingarfulltrúinn í Hafnarfirði
F.h. Hrólfur S. Gunnlaugsson

ASK
26. maí 2008
Hilmar Guðmundsson

VST Verkefni
Sigurðar Thoroddson hf.
F.h. VST hf. Hrólfur Hansson 150946-4929



ROOF LINER SHEETING LAYOUT
Panel = TYPE-R, Base-Metal = STEEL (XRW), Thickness = 0.50mm., Finish = FROST WHITE
ROOF LINER PANELS TO BE FIELD CUT AT FRAMED OPENING LOCATIONS.



NO.	DATE	DESCRIPTION	DRN	CHK	DSN
2	20.05.2008	ISSUED FOR CONSTRUCTION	NSK	TPS	IPC
1	24.11.2007	RE-ISSUED FOR APPROVAL	MGK	VRA	IPC
0	26.10.2007	ISSUED FOR APPROVAL	KRT	VRA	IPC



ZS JOB NO. : V7-D567	BUILDING NO.: 01
PROJECT NAME : HEDINN HOUSE	
CUSTOMER : HEDINN	
JOB SITE LOCATION : HAFNAFIRDI, ICELAND	
DRAWING TITLE : ROOF LINER PLAN	DRAWING NO. : E26