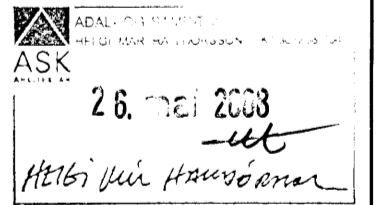
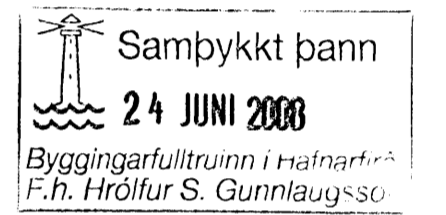
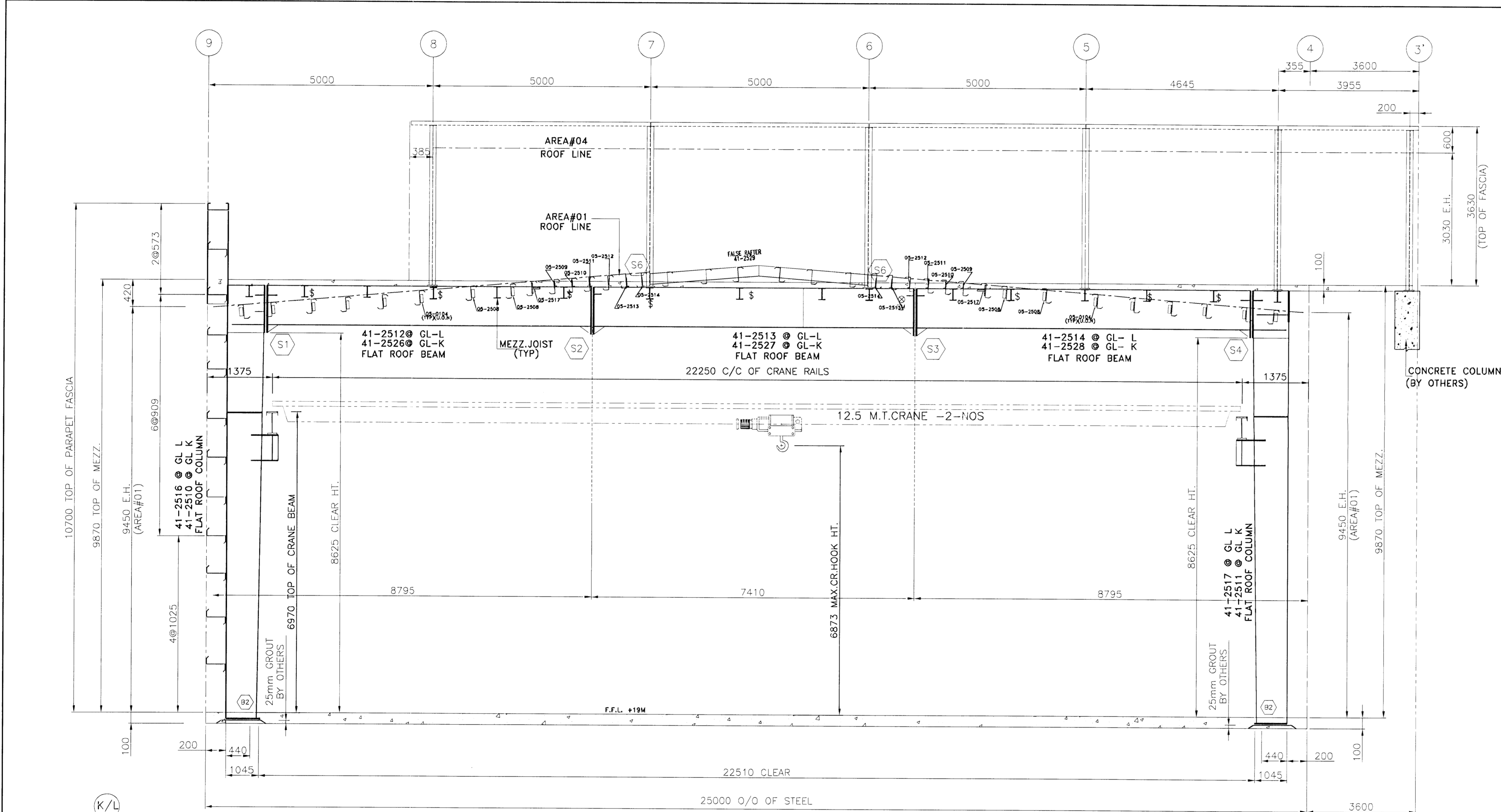


CROSS SECTION SCHEDULE  
(FLAT ROOF)

BOLT SCHEDULE			
CONN	QTY	SIZE	LENGTH
B1)	4	M36	1000
B2)	4	M36	1000
S1)	12	M36	120
S2)	10	M30	120
S3)	10	M36	120
S4)	12	M30	120
S5)	10	M24	90

IMPORTANT NOTES

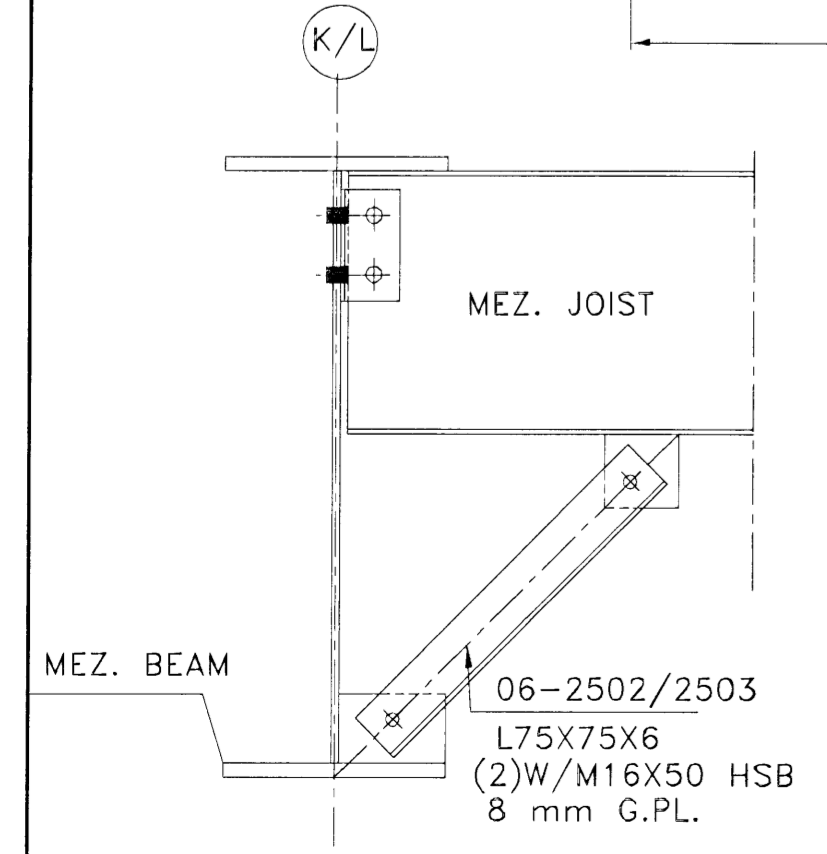
- 1 - High strength bolts (HSB) are galvanized while mild steel bolts (MSB) are electro plated (yellow chromate conversion). These bolts are marked on the heads so that they can be easily identified.
- 2 - The correct type of bolts must be used as called for on the details. Using wrong type of bolts may cause building failure at the erector's responsibility.
- 3 - Continuous machine submerged arc weldings (S.A.W.) meet the applicable requirements of the American Welding Society (A.W.S.) D1.1-2004.
- 4 - Web-to-flange welds are single side fillet welds in accordance with the ninth edition of the AISC Table J2.4 Page 5-67 unless noted otherwise.
- 5 - Web-butt welds are complete penetration using flux back-up (16mm plate max.)
- 6 - Flange butt welds are on both sides with copper back-up. Flanges 19mm or thicker are beveled prior to assembly.
- 7 - Gusset plates for flange braces are welded on both sides of the column and rafter, however flange braces are required at one side (unless noted otherwise). For aesthetic reasons, it is preferable to install them all at the same side of column and rafter. The side chosen depending on erection sequence.



VST Verkfæðistofa Sigurðar Thoroddsson hf. F.h. VST hf. Hrólfur Hásson 1307464929

CROSS SECTION  
(@ GRID LINE - K&L)

\$ - DENOTES FLANGE BRACE 06-2502 L75X75X6 W/1-NO OF M16X50 HSB.W/8 THK.PL. @ EACH END.  
# - DENOTES FLANGE BRACE 06-2503 L75X75X6 W/1-NO OF M16X50 HSB.W/8 THK.PL. @ EACH END.



TYPICAL DETAIL OF FLANGE BRACE @ JOIST LOCATION

NO.	DATE	DESCRIPTION	DRN	CHK	DSN
2	20.03.2008	ISSUED FOR CONSTRUCTION	NSK	TPS	IPC
1	24.11.2007	RE-ISSUED FOR APPROVAL	MGK	VRA	IPC
0	25.10.2007	ISSUED FOR APPROVAL	KRT	VRA	IPC



ZS JOB NO. : V7-D567	BUILDING NO. : 01
PROJECT NAME : HEDINN HOUSE	
CUSTOMER : HEDINN	
JOBSITE LOCATION : HAFNAFIRDI, ICELAND	
DRAWING TITLE : CROSS SECTION	DRAWING NO. : E11