

CROSS SECTION SCHEDULE (LEFT FROM RIDGE)

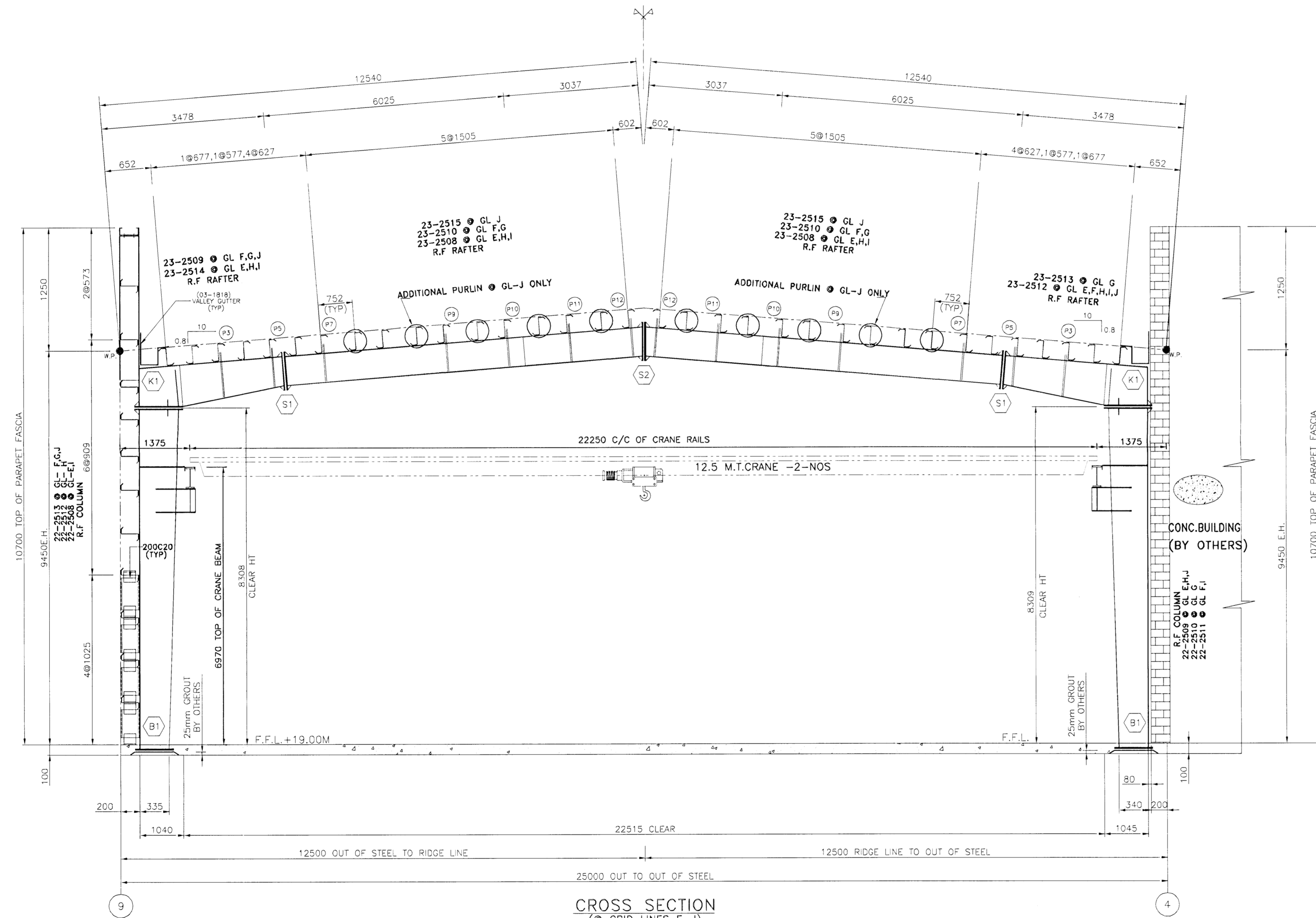
BOLT SCHEDULE				FLANGE BRACE	
CONN	QTY	SIZE	LENGTH	MARK	PART MARK
(B1)	4	M30	900	(P3)	07-2501
(K1)	12	M30	100	(P5)	07-2502
(S1)	10	M27	110	(P7)	07-2503
(S2)	8	M27	90	(P9)	07-2504
				(P10)	07-2505
				(P11)	07-2506
				(P12)	07-2506

CROSS SECTION SCHEDULE (RIGHT FROM RIDGE)

BOLT SCHEDULE				FLANGE BRACE	
CONN	QTY	SIZE	LENGTH	MARK	PART MARK
(B1)	4	M30	900	(P3)	07-2501
(K1)	12	M30	100	(P5)	07-2502
(S1)	10	M27	110	(P7)	07-2503
				(P9)	07-2504
				(P10)	07-2505
				(P11)	07-2506
				(P12)	07-2506

IMPORTANT NOTES

- High strength bolts (HSB) are galvanized while mild steel bolts (MSB) are electro plated (yellow chromate conversion). These bolts are marked on the heads so that they can be easily identified.
- The correct type of bolts must be used as called for on the details. Using wrong type of bolts may cause building failure at the erector's responsibility.
- Continuous machine submerged arc weldings (S.A.W.) meet the applicable requirements of the American Welding Society (A.W.S.) D1.1-2004.
- Web-to-flange welds are single side fillet welds in accordance with the ninth edition of the AISC Table J2.4 Page 5-67 unless noted otherwise.
- Web-butt welds are complete penetration using flux back-up (16mm plate max.)
- Flange butt welds are on both sides with copper back-up. Flanges 19mm or thicker are beveled prior to assembly.
- Gusset plates for flange braces are welded on both sides of the column and rafter, however flange braces are required at one side (unless noted otherwise). For aesthetic reasons, it is preferable to install them all at the same side of column and rafter. The side chosen depending on erection sequence.

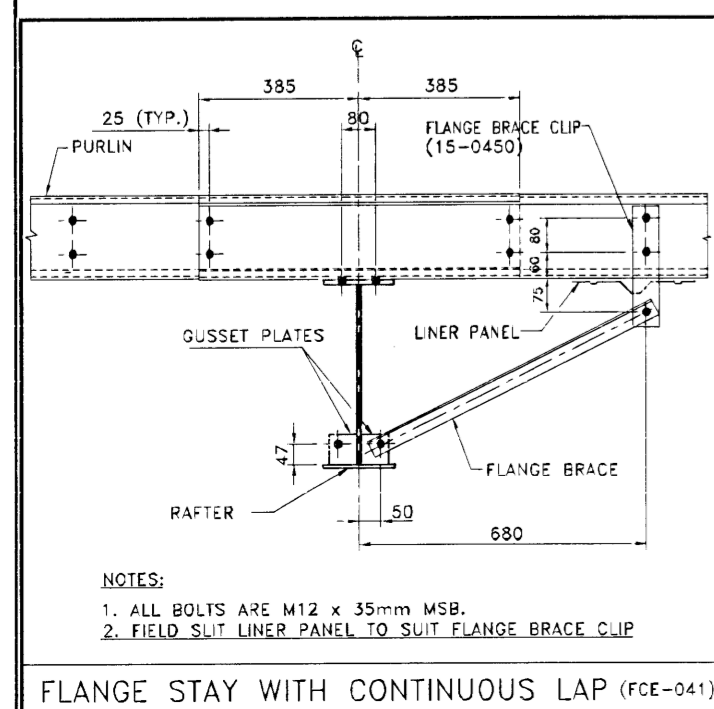


CROSS SECTION  
 (• GRID LINES E-J)  
 BLOCK WORK  
 BY OTHERS

Samþykkt þann  
**24 JUNI 2008**  
 Byggingarfulltrúinn í Hafnarfirði  
 F.n. Hrólfur S. Gunnlaugsson

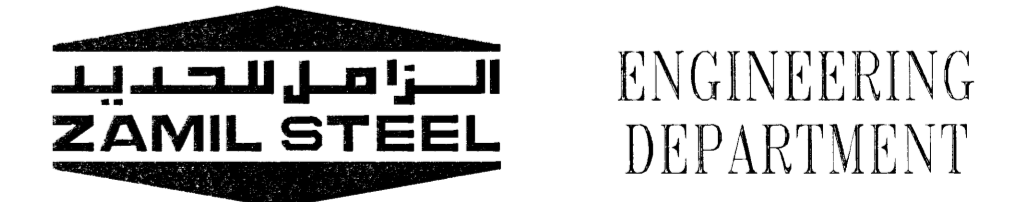
ASK  
 26. maí 2008  
 Hildur Guðna Gunnarsson

VST Verkfæðistofa  
 Sigurðar Thorodsson hf.  
 Hlífarvegur 11, 150716-4922



FLANGE STAY WITH CONTINUOUS LAP (FCE-041)

NO.	DATE	DESCRIPTION	DRN	CHK	DSN
2	20.03.2008	ISSUED FOR CONSTRUCTION	NSK	TPS	IPC
1	24.11.2007	RE-ISSUED FOR APPROVAL	MGK	VRA	IPC
0	25.10.2007	ISSUED FOR APPROVAL	KRT	VRA	IPC



ZS JOB NO. : V7-D567 BUILDING NO.: 01  
 PROJECT NAME : HEDINN HOUSE  
 CUSTOMER : HEDINN  
 JOBSITE LOCATION : HAFNAFIRDI, ICELAND  
 DRAWING TITLE : CROSS SECTION @ GL -E TO J  
 DRAWING NO. : E04