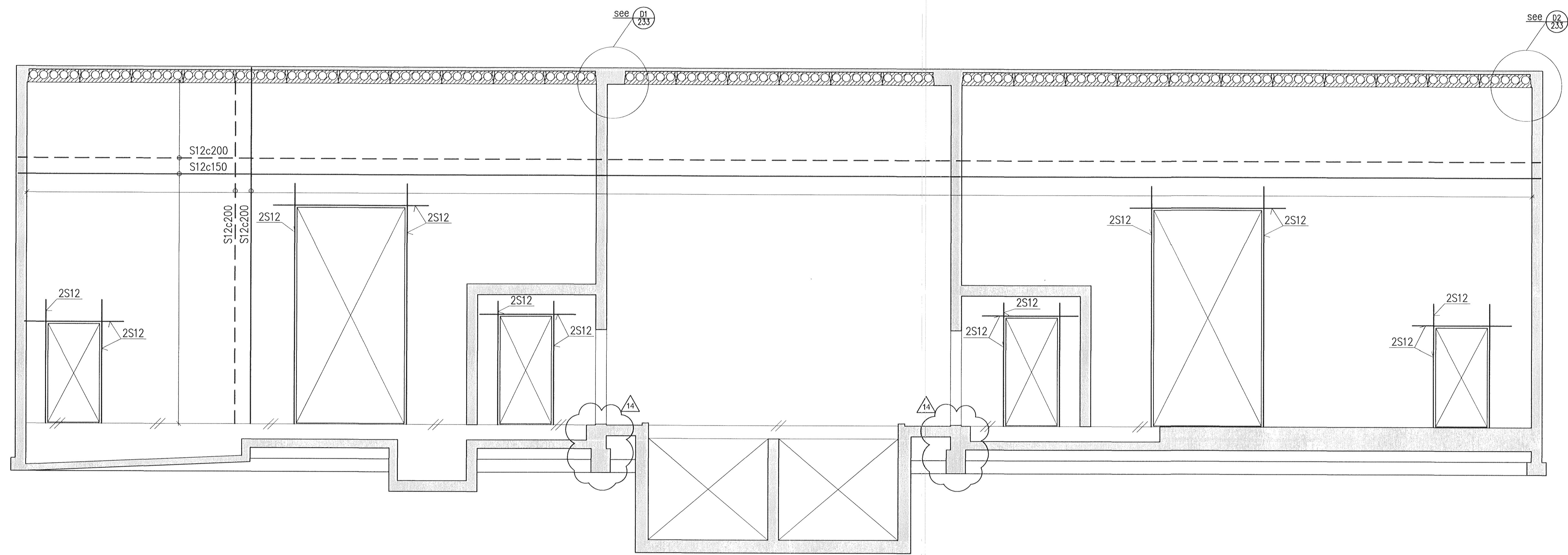


Samþykkt þann  
05 APR 2011  
Byggingatillitunni & Hafnarfræðir  
F.h. Hrölfur S. Gunnlaugsson

Nick Indriðason  
NÍ 11144-3449

B  
231



Skýringar:  
Legend:

| Útg. nr.<br>Rev. no. | Lýsing<br>Description   | Dagsetning<br>Date | Höfundur<br>Des./Drw. | Yfirl.<br>Chk. | Núll. heim.<br>Suppl. Rel. | Núll. heim.<br>ISAL Rel. |
|----------------------|-------------------------|--------------------|-----------------------|----------------|----------------------------|--------------------------|
| 14                   | Foundation added        | 11.03.03           | HS/LDB                | NI             | ÓS                         |                          |
| 13                   | Doors changed           | 11.01.18           | HS/LDB                | NI             | ÓS                         |                          |
| 12                   | General revision        | 10.12.22           | HS/LDB                | NI             | ÓS                         |                          |
| 11                   | Issued for construction | 10.05.06           | HS/LDB                | NI             | ÓS                         |                          |

This drawing is the property of Rio Tinto Alcan Iceland Ltd. and handed out for personal use only. It may neither be copied nor made available to others without permission of Rio Tinto Alcan Iceland Ltd. The receiver is liable for any misuse.

Stærð: A1 Máv.: 1:50  
Formát: Scale: Dimensions without tolerances according to ISO 2768-1 medium.

HRV ENGINEERING

|                                 |                                                              |                           |
|---------------------------------|--------------------------------------------------------------|---------------------------|
| Dagsetning / Date<br>2008.10.01 | Hönnuð / Designed<br>HS                                      | Tekni / Drawn<br>LDB      |
| Verktali / Supplier<br>HRV      | Tekni nr. verktala / Supplier drw. no.<br>IDP-410-CA-015-234 | Samþykkt / Approved<br>NI |
| Yfirl. / Chkd.<br>NI            | HLuti af: / Part of:                                         |                           |

IDP410-RECTIFIER BUILDINGS  
A5/S1  
WALLS SIDE VIEW 2/3  
REINFORCEMENT

**RioTintoAlcan**

ISAL Yfirbúð og skráð, dags / ISAL Checked, date  
ISAL Samþykkt, dags / ISAL Approved, date

|                                 |                                       |                        |
|---------------------------------|---------------------------------------|------------------------|
| Flokkur nr.:<br>4011            | Blað nr.:<br>AKS                      | Næsta bl. nr.:<br>4011 |
| Kostn. nr.-Ccnr. / Búnr.-Eq.no. | ISAL Tekni nr. ISAL /Drw. no. of ISAL | Breyt./Rev.<br>C       |