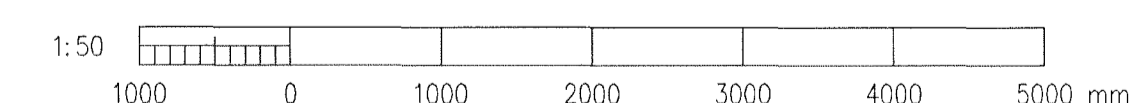
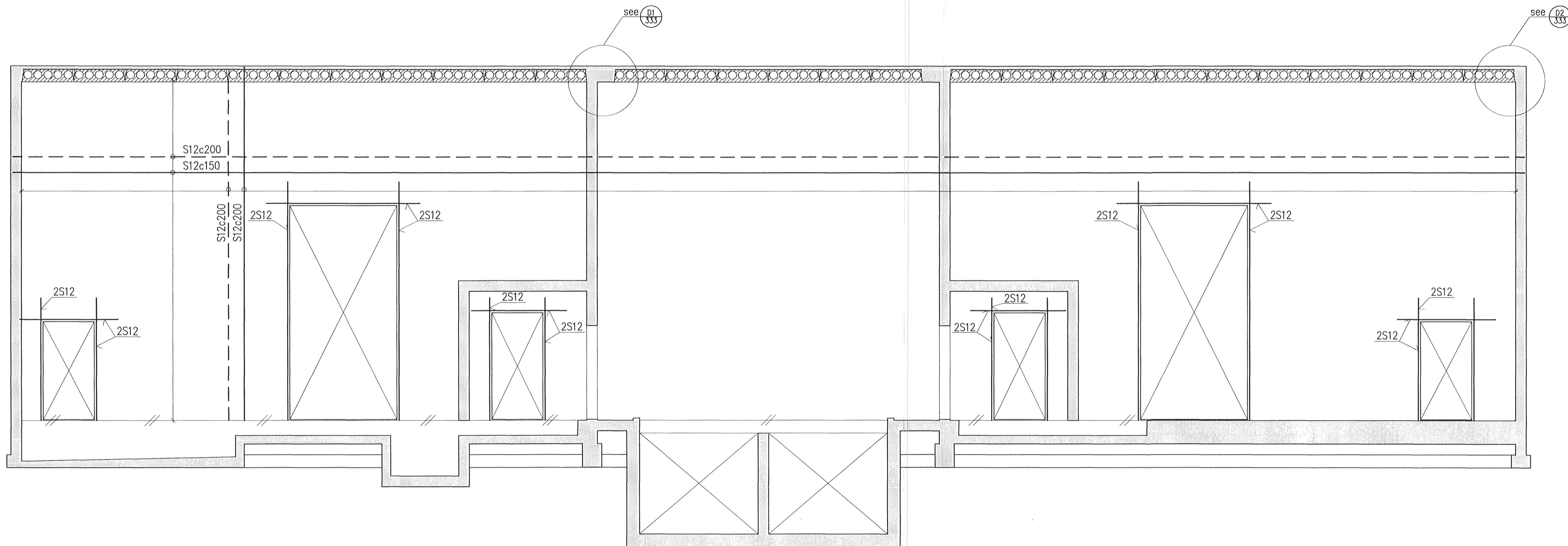


Sampykkt þann  
04 APR 2011  
Byggingaáritráðinn í Hafnarfirði  
F.h. Hrölfur S. Gunnlaugsson

Níel Indriðsson  
KS 191144 2949

B  
331

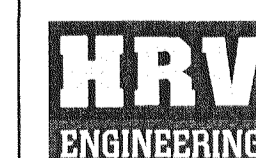


Skýringar:  
Legend:

Ítg nr / Rev no	Lýsing / Description	Dagsetning / Date	Hor/Tkn / Des/Dwg	Yfir / Dtd	Notk heim / Suppl Rel	Notk heim / ISAL Rel
1	Issue for construction	11.03.07	HS/LDB	NI	ÓS	

This drawing is the property of Rio Tinto Alcan Iceland Ltd. and handed out for personal use only. It may neither be copied nor made available to others without permission of Rio Tinto Alcan Iceland Ltd. The receiver is liable for any misuse.

Starð: A1  
Mkv: 1:50  
Format: A1  
Scale: 1:50  
Dimensions without tolerances according to ISO 2768-1 medium.



Dagsetning / Date	2011.03.07
Hannað / Designed	HS
Teikn / Drawn	LDB
Verktaki / Supplier	HRV
Teikn.nr.verktaka / Supplier drw.no	IDP-410-CA-015-334
Sannhætt / Approved	NI
Yfir / Chkd	NI
Hluti af / Part of:	

IPU410-RECTIFIER BUILDINGS  
B5/S2  
WALLS SIDE VIEW 2/3  
REINFORCEMENT

**RioTinto Alcan**

Flakur nr.:	Blað nr.:	Nesta blinn.:
Kostn.nr.-Cno. / Blinn.nr.-Eqno		
AKS		
Teikn.nr. ISAL / Draw.no. of ISAL	Breyt./Rev.	
ISAL Alcan Iceland Ltd Spámannak IS-222 Hafnarforður Ísland	C	