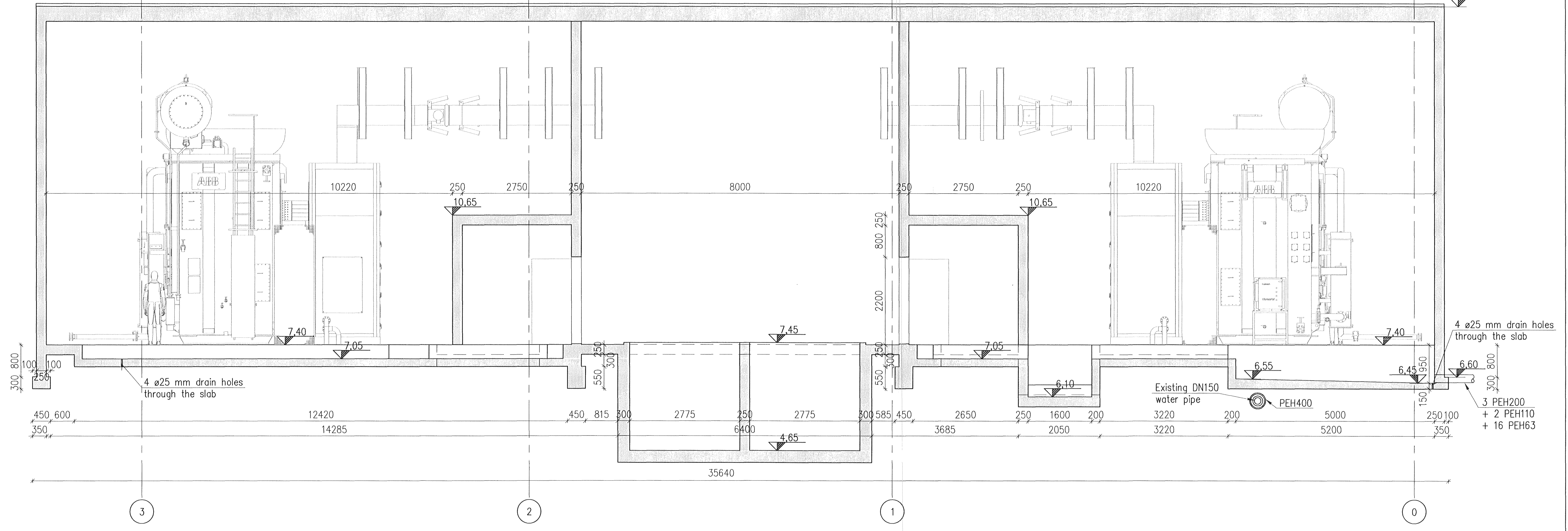


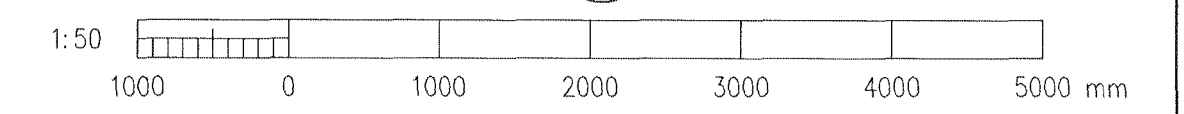
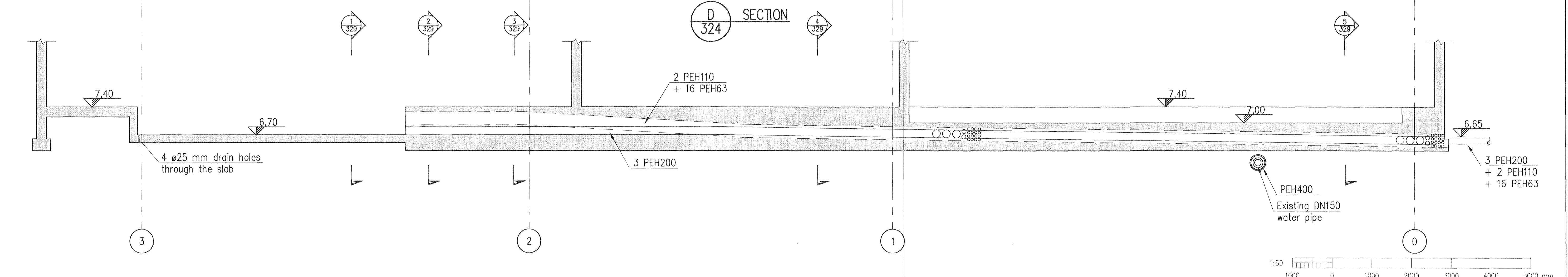
Samþykkt þann  
 04 APR 2011  
 Bygginguátlitunni / Hafnarfirði  
 F.h. Hrólfur S. Gunnlaugsson

Níels Indriðason  
 15.64-15.95 ml 19114-4-24.2

C SECTION  
 324



D SECTION  
 324



Skýringar: Legend:	This drawing is the property of Rio Tinto Alcan Iceland Ltd. and handed out for personal use only. It may neither be copied nor made available to others without permission of Rio Tinto Alcan Iceland Ltd. The receiver is liable for any misuse.			Dagsetning / Date 2011.03.07		IPU410-RECTIFIER BUILDINGS		Flokkur nr.:	Blað nr.:	Næsta bl. nr.:	
	<small>Format: A1 Scale: 1:50          Dimensions without tolerances according to ISO 2768-1 medium.</small>			Hannað / Designed HS	Teikn / Drawn LDB	B5/S2 SECTIONS C AND D		Kostn.nr.-Cenn. / Blm.nr.-Eq.no			
				Verktaki / Supplier HRV	Teg.teikningar / Dwg. type: FORM WORK		AKS				
				<small>Teikn.nr.verktaka / Supplier drw.no.          IDP-410-CA-015-328</small>				<small>ISAL kottland Ltd          Straumavík          IS-222 Hafnarforðar          Ísland</small>			
				<small>Sambúið / Approved</small>		<small>Yfir / Chkd          NI</small>		<small>Teikn.nr. ISAL / Drw.no. of ISAL          Breyt./Rev.          C</small>			
				<small>Hluti af: / Part of:</small>		<small>ISAL Yfirfard og skráð, dags / ISAL Checked, date</small>		<small>ISAL Samþykkt, dags / ISAL Approval, date</small>			
1	Issue for construction	11.03.07	HS/LDB	NI	ÓS						
Ötg nr	Lýsing	Dagsetning	Hönnuð/Des/Drw	Yfir/Gld	Notk heim/Suppl Rel	Notk heim/ISAL Rel					
Rev no	Description	Date									