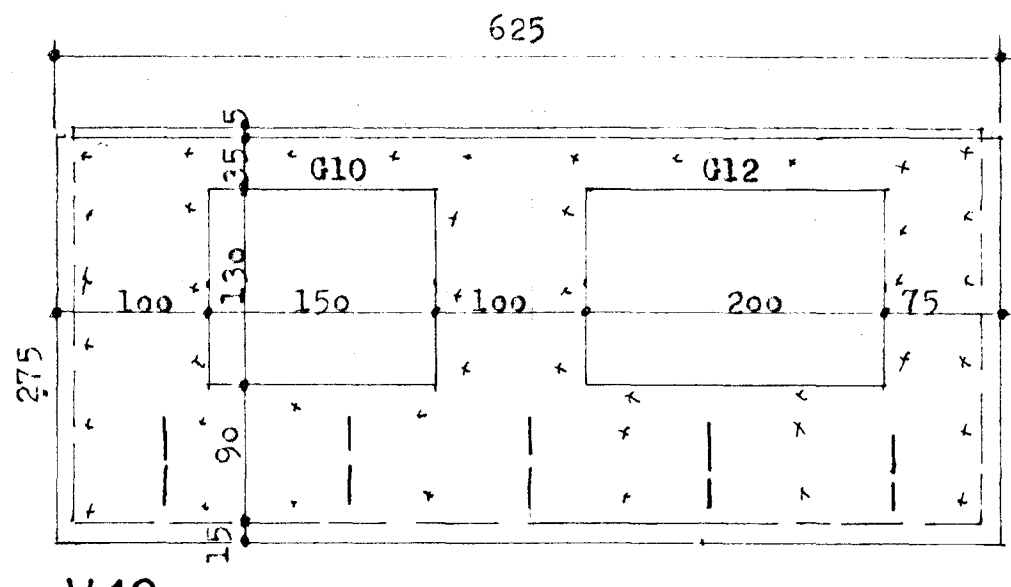
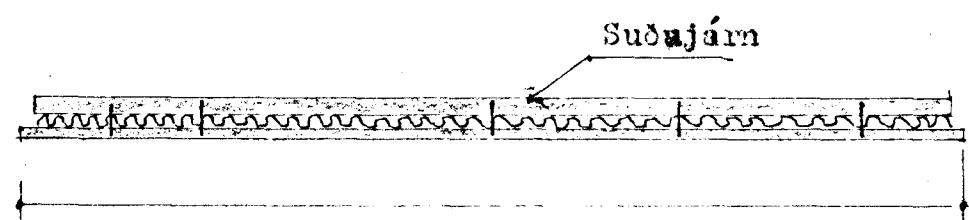


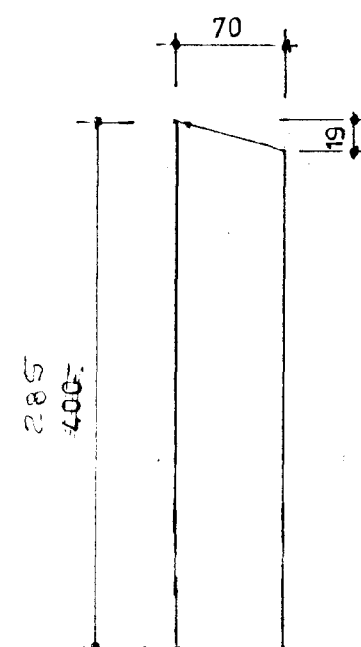
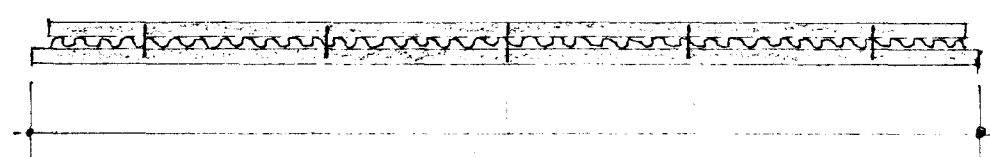
V9

F = 17.19 m²
 P = 5400 kg
 R = 2.15 m³

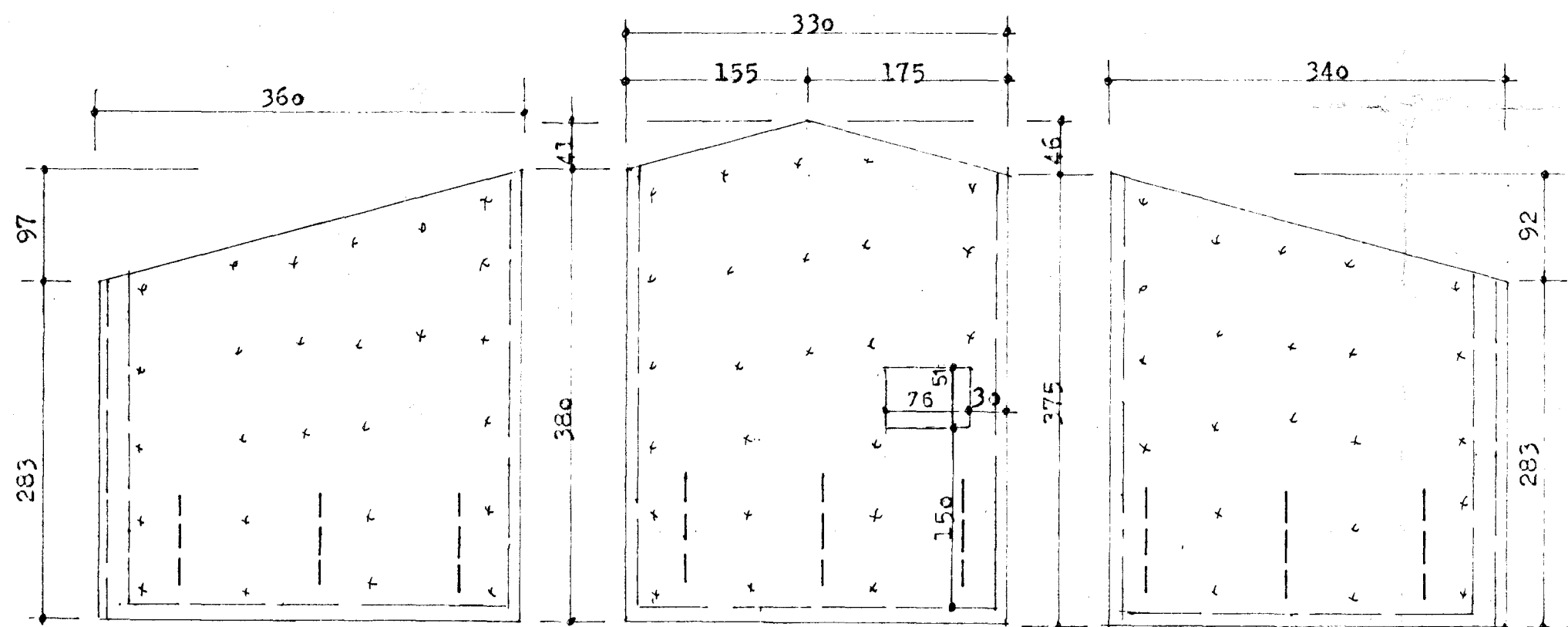


V10

F = 17.19 m²
 P = 5250 kg
 R = 2.09 m³

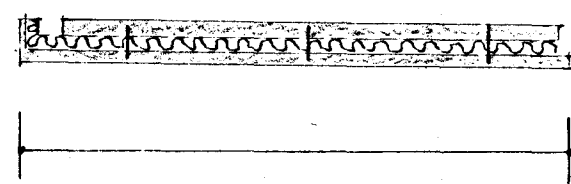


V14 2 stk
 F = 2.8 m²
 P = 1000 kg
 St = 0.42 m³



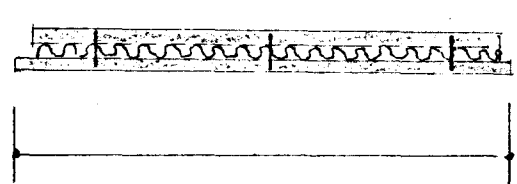
V11

F = 11.93 m²
 P = 5000 kg
 R = 2.00 m³



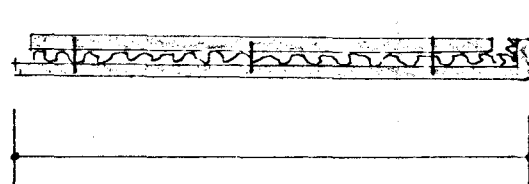
V12

F = 13.18 m²
 P = 5500 kg
 R = 2.19 m³



V13

F = 11.19 m²
 P = 4700 kg
 R = 1.87 m³

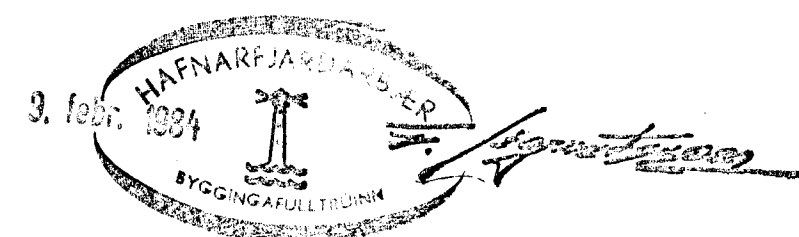


Skýringar:

Járnbinding:

Ytra byrði: I ytra byrði komi net K189, kringum glugga og hurðir komi 2K8 sem ná minnst 40 cm út fyrir op. I útkant ytra byrðis komi K10.

Inna byrði: I inna byrði komi net K189, kringum glugga og hurðir komi 2 K8 sem ná minnst 40 cm út fyrir op. út úr hliðum koma lykkjur á vanjulegan hátt.



VERKHÖNNUN
 VERKFRÆÐI- OG TEIKNISTOFA



Brautarholti 20 Reykjavík Sími 91-16820

Verknr. 180 Teiknad:
 Teiknr. 106 Hannað:
 Mælikv.: 1: 50 Samþykkt: *J. Sigólfsson*
 Dags. 12.10.1983 Breytt:

Verkefni: Alfaberg 20 Hafnarfirði

Heiti teikn.:
 Utveggjaeiningar V9- V13