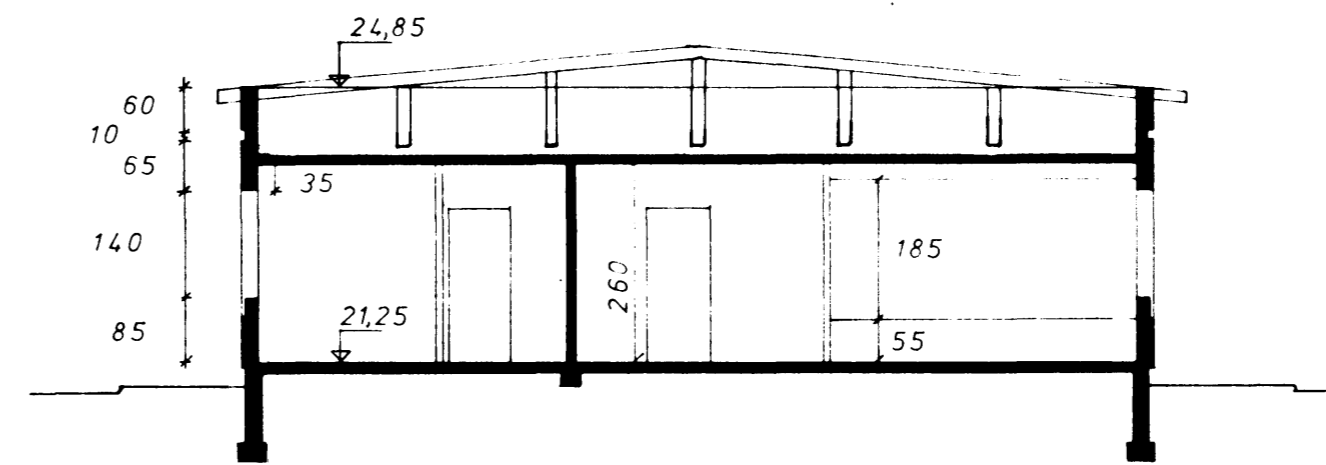
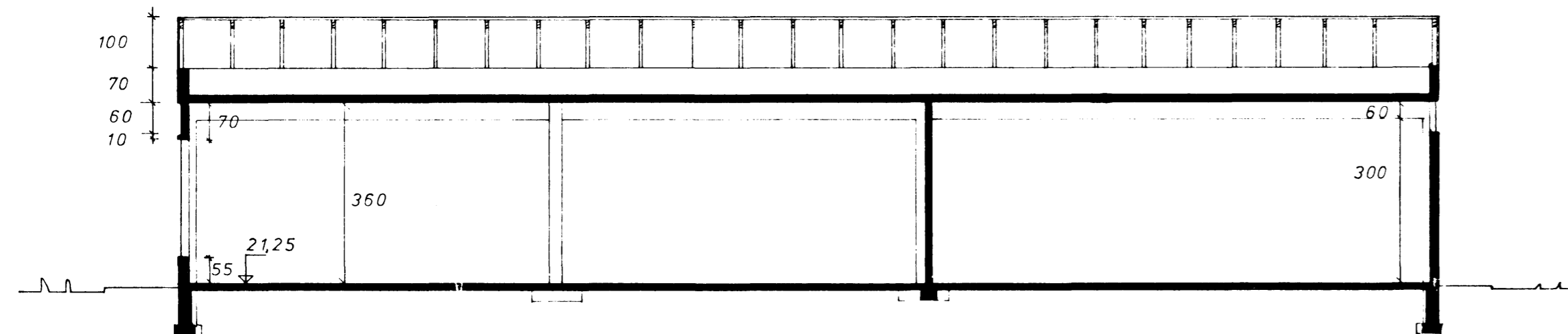


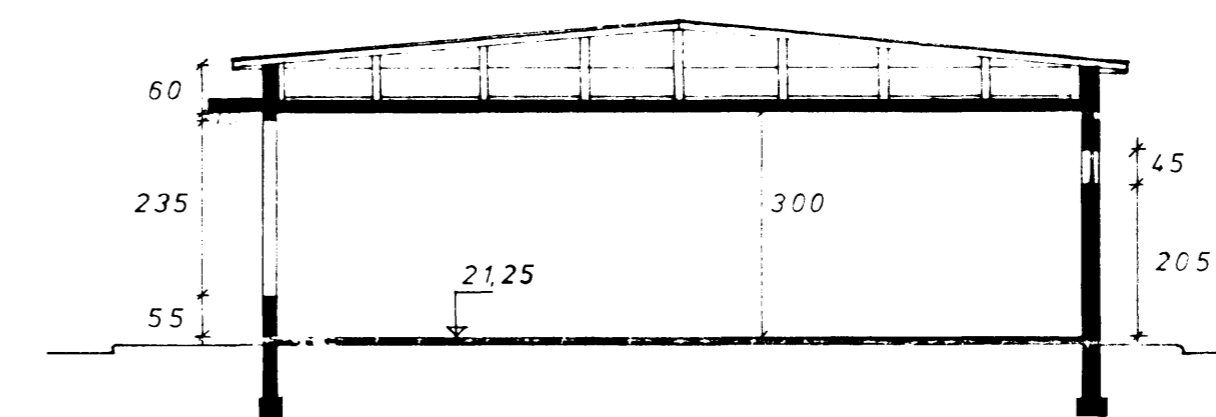
Sambykkt á fundi bygginga-  
nefndar þ. 16. 8. 1981.  
BYGGINGAUFULLTÖKN  
I HAFNAFIRÐI  
= / 15m sm



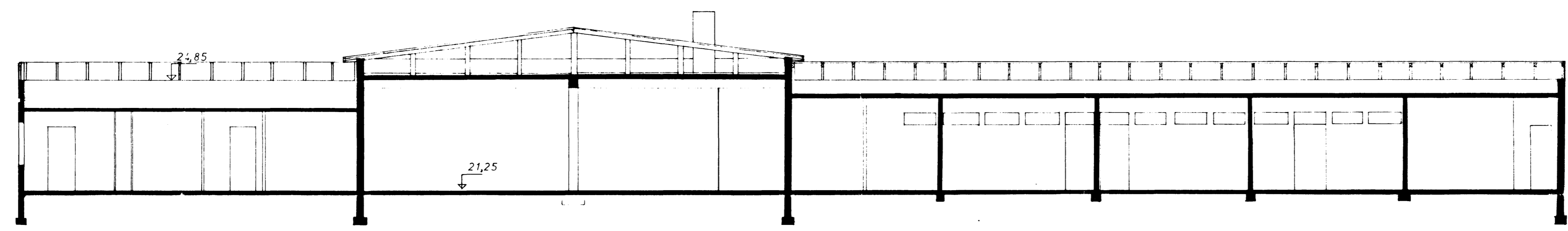
SKURÐUR A-A



SKURÐUR B-B



SKURÐUR C-C



SKURÐUR D-D

BREYTT Í AGÚST 1981.  
REYKJAVÍK Í JÚNÍ 1973

Gudm. Óskarsson

álfu 117,2 m<sup>2</sup>

0110 - 1130 01