

Hús við Álfaskeið nr. 14

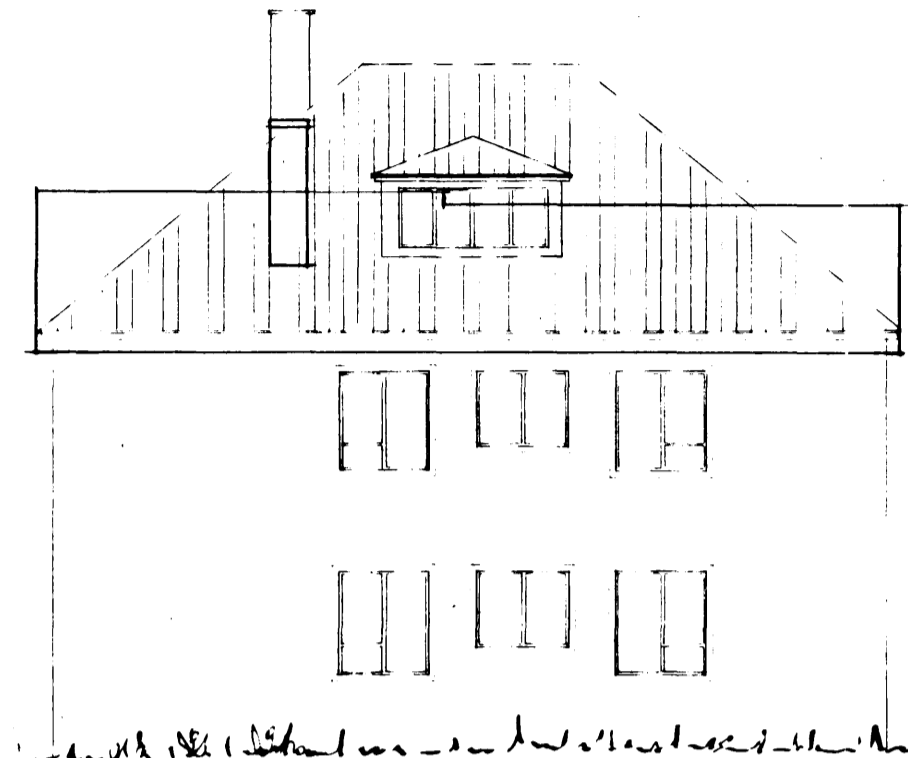
Eig. Markús Þorgeirsson og Vilhjálmur G. Sveinsson

1:100

sp. 9/54



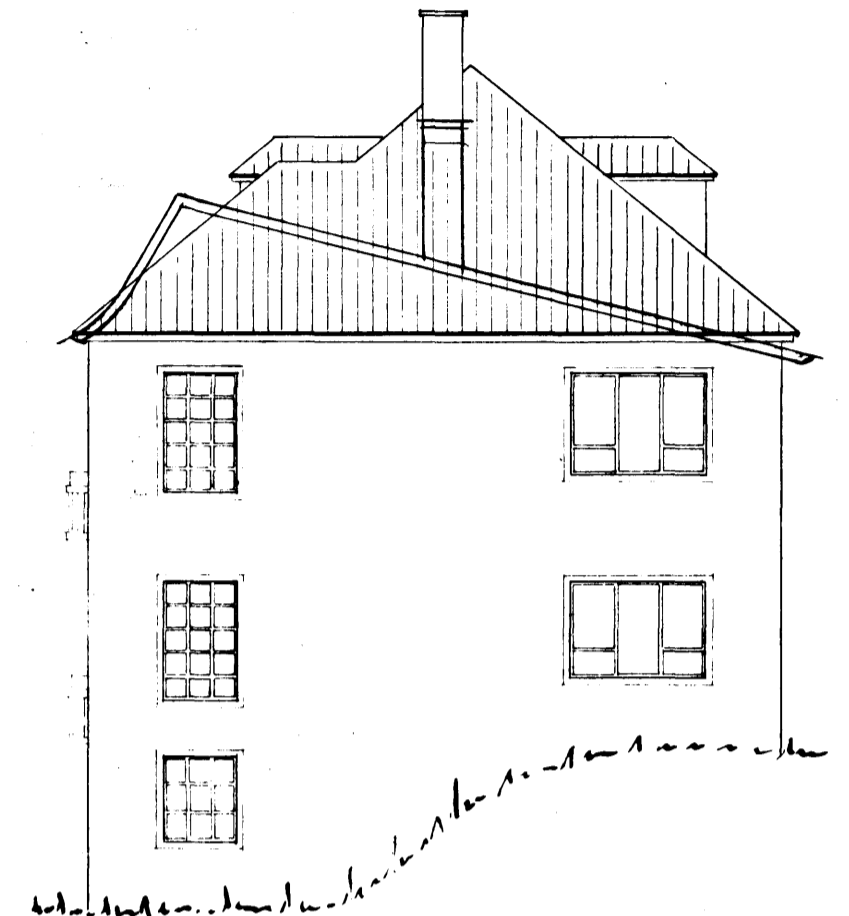
Suðvestur



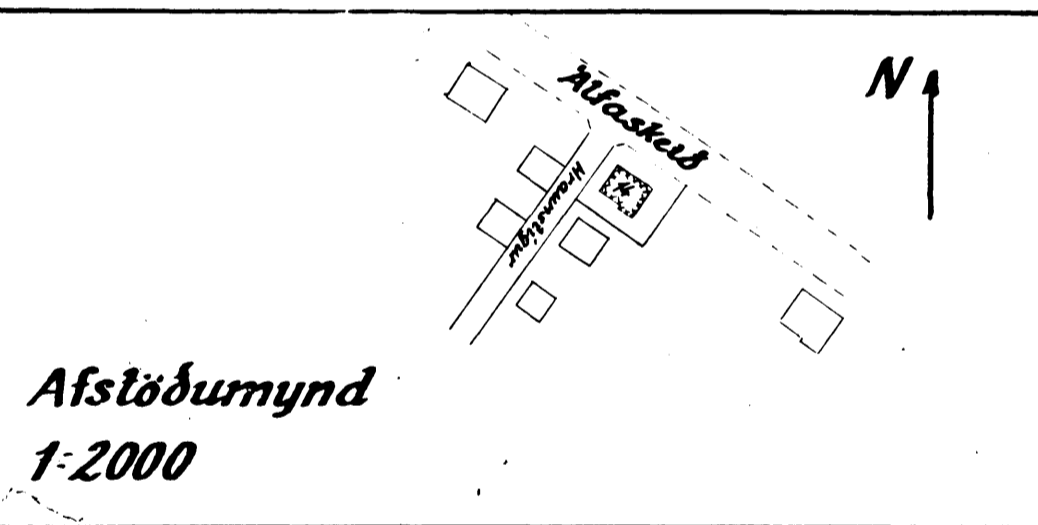
Norðaustur



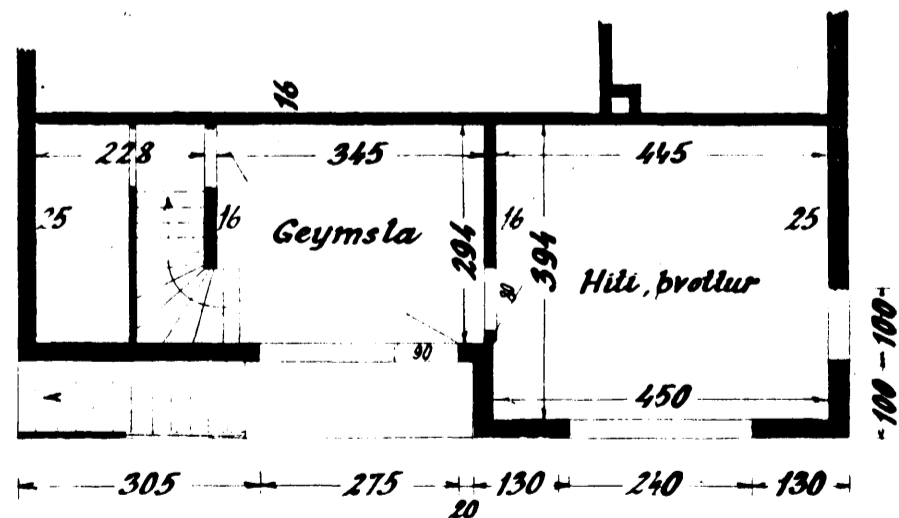
Norðvestur



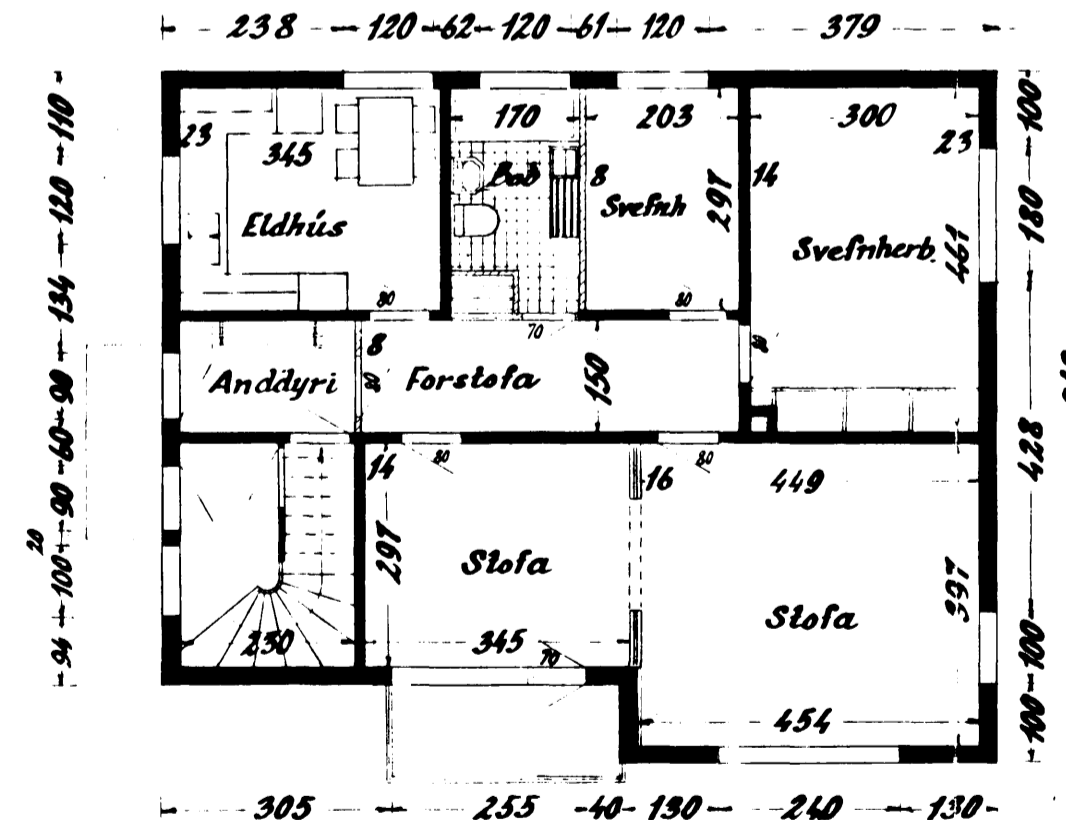
Suðaustur



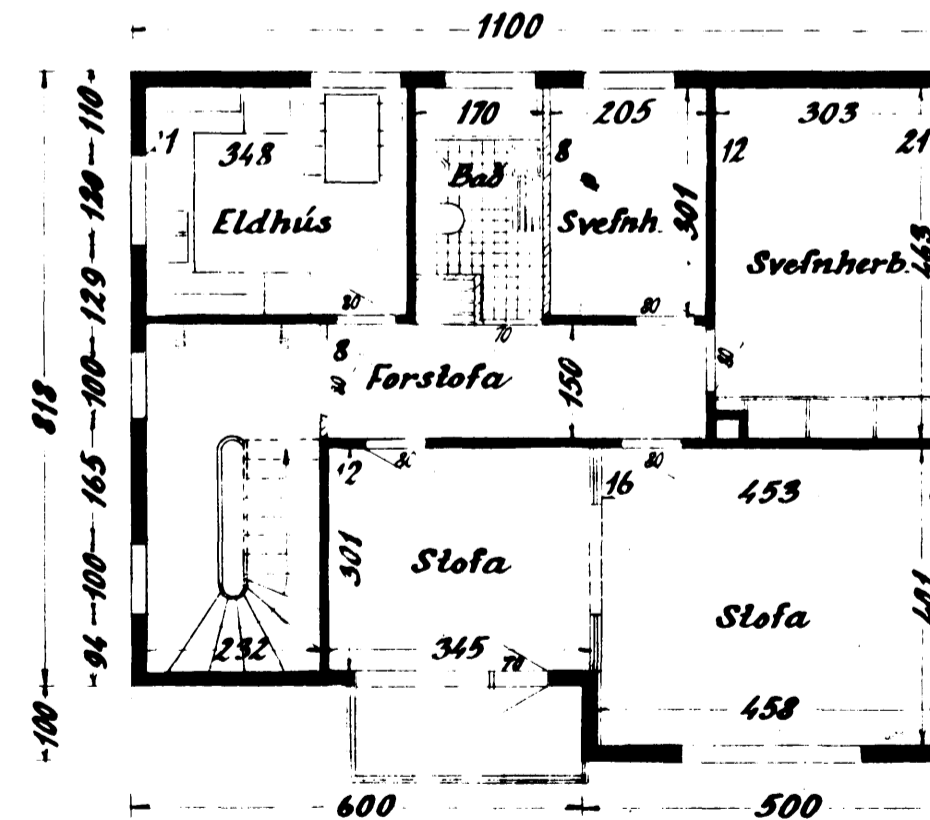
Afstöðumynd
1:2000



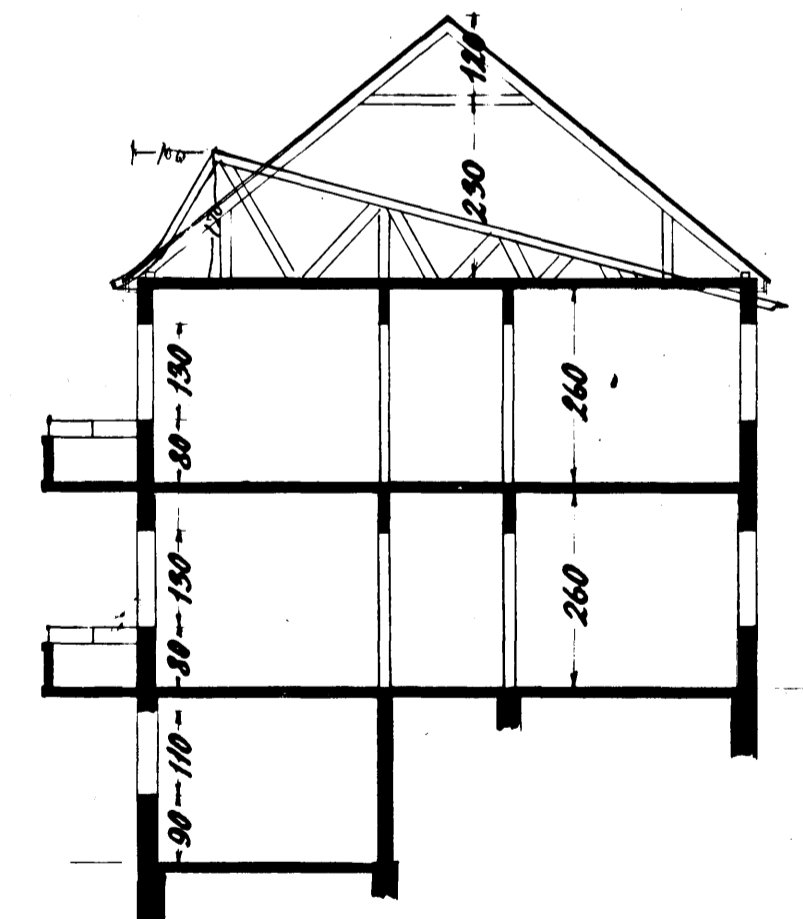
Kjallari



1. hæð



2. hæð



Þverskurður

Hafnarfirði í des. 1953

Sig. J. Ólafsson