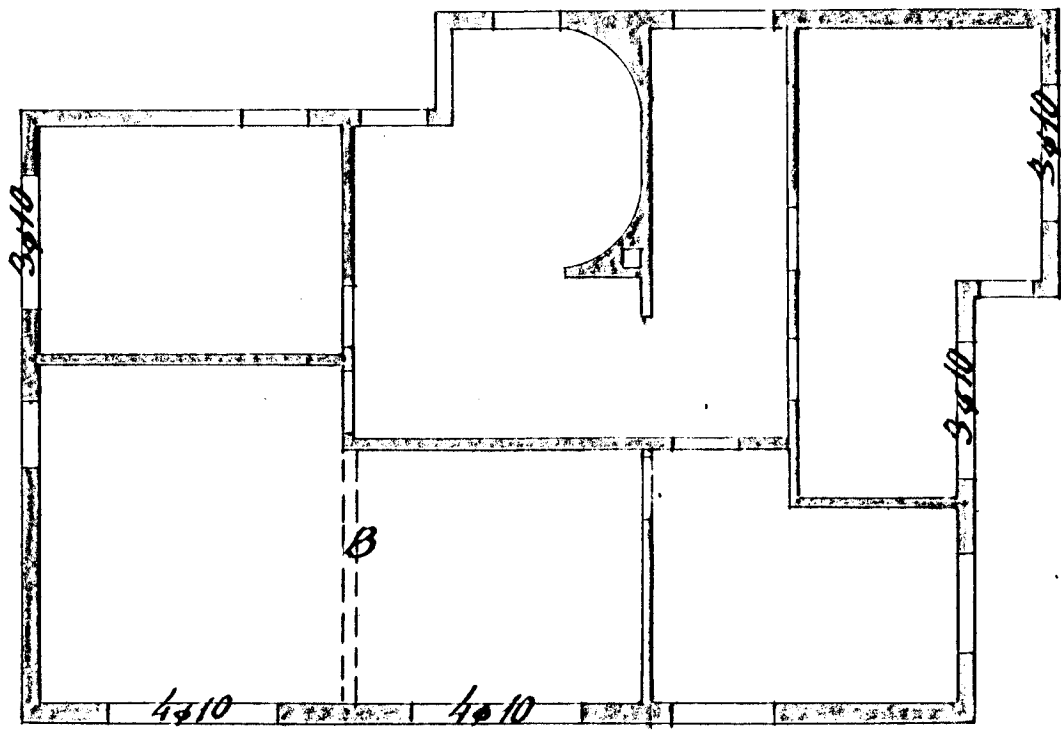
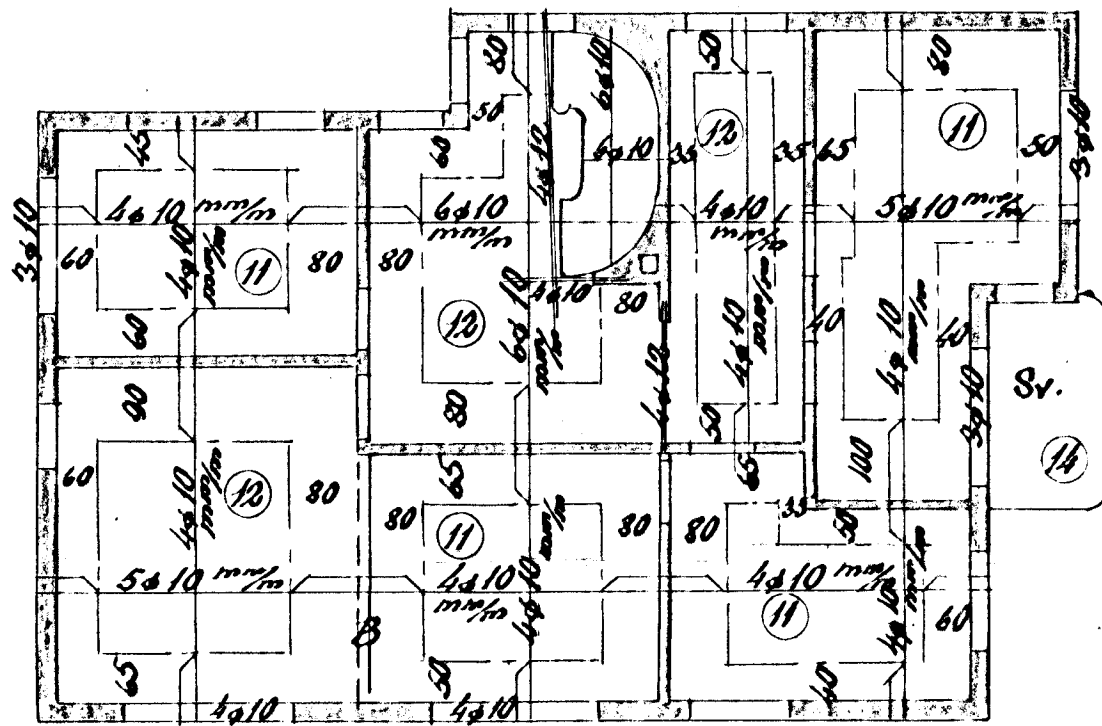


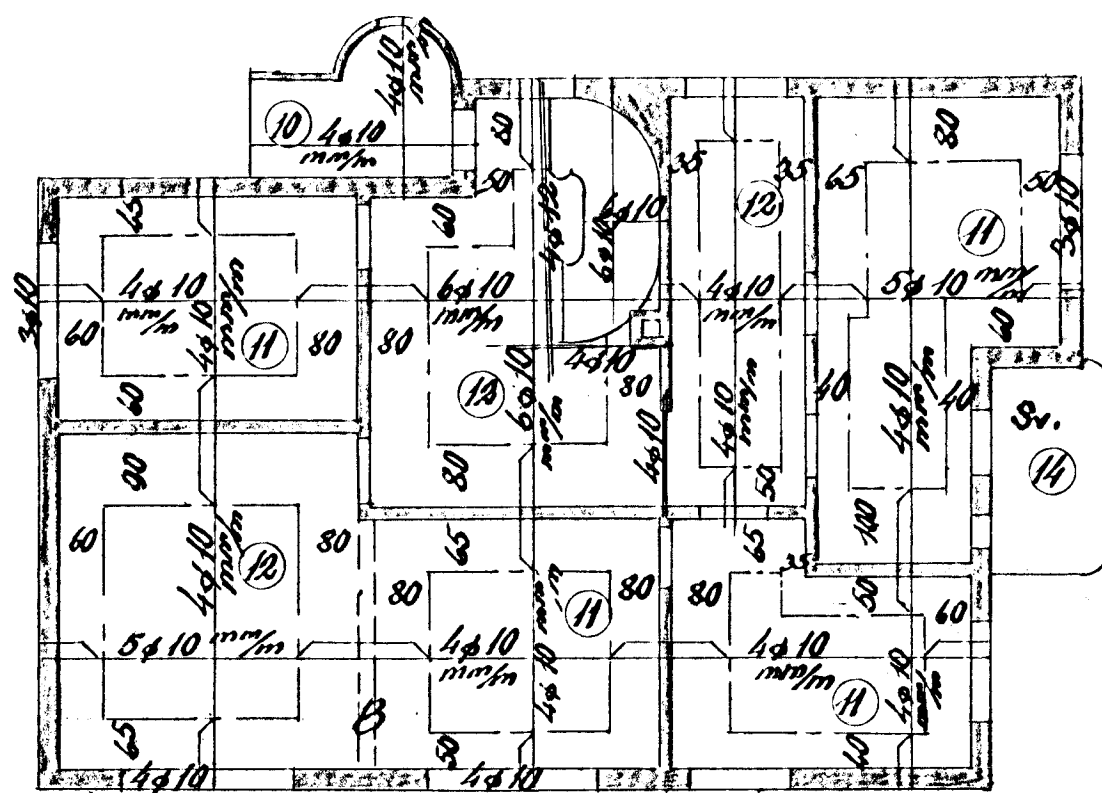
Hús Kristján's Steingrúnssonar við Álfaskeld nr. 40
Járnbennt steinsteypa



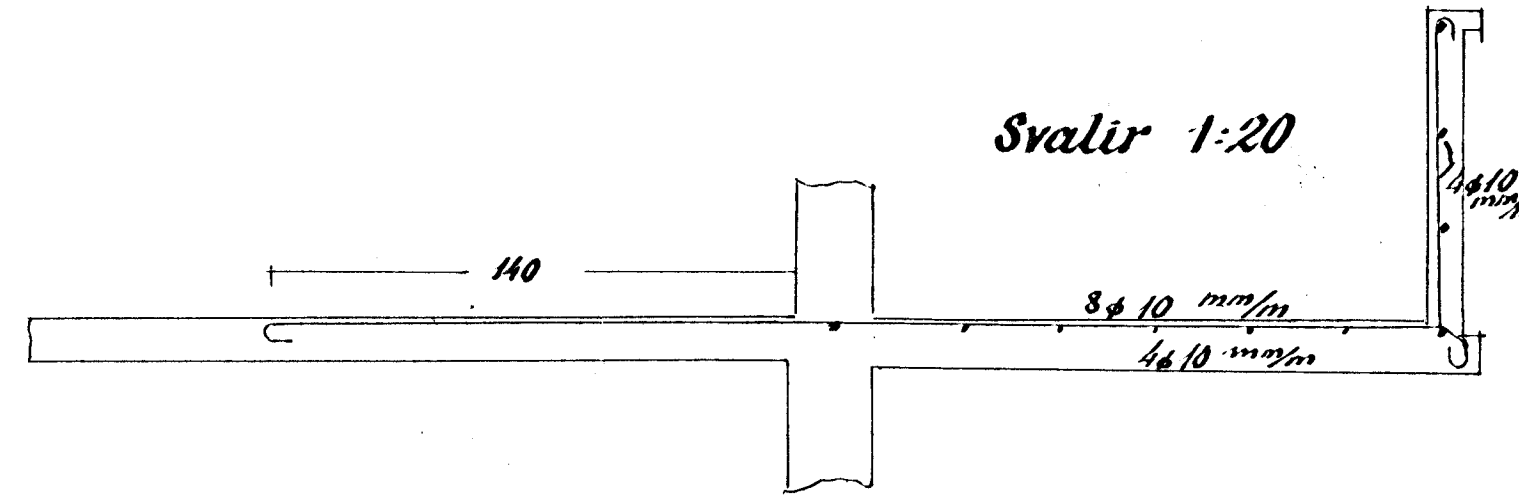
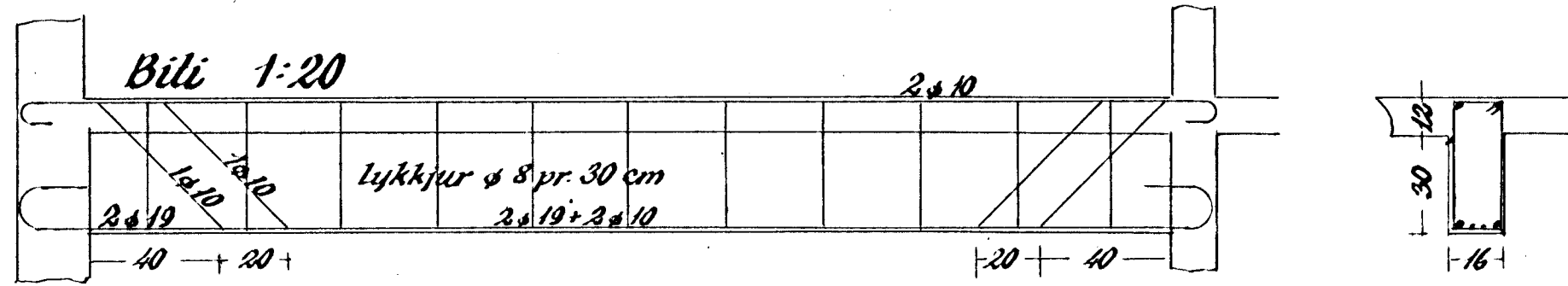
Veggir 2. hæðar 1:100



Loft yfir 1. hæð 1:100



Loft yfir kjallara 1:100



Blöndun steypu 1:2:3

Yfir dyr og glugga komi 2x10, nema annað sé tekið fram

Þöstudýkkir í ○

Hafnarfirði í sept. 1955

Sig. J. Ólafsson