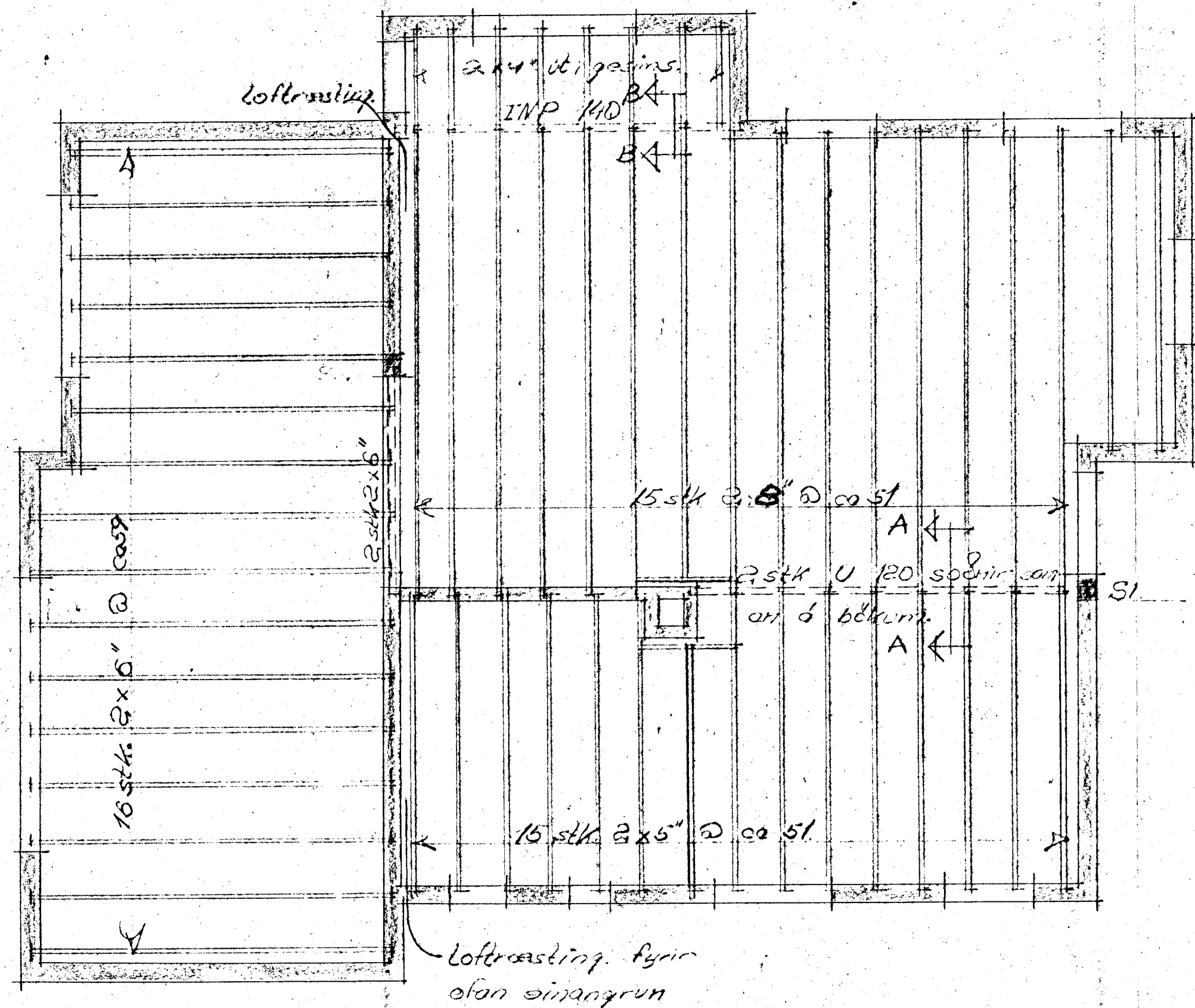
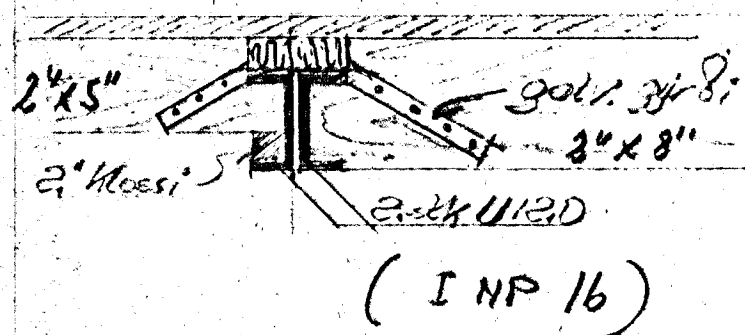


Álfaskóli nr 44. Hafnarvík
 spennuteikning. m. 1:50 og 1:10



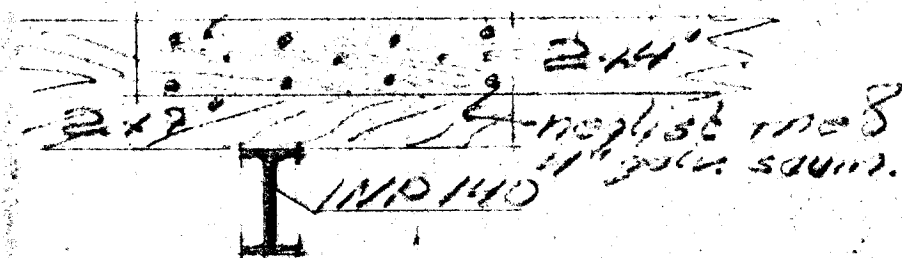
Yfir spennuenda skal laggja 6 10
 lyktjur sem ná 30 cm. niðri fyrir
 spennu.
 Ath. skal með loftræsi í þaki fyrir
 ofan einangrun.
 Þera skal þavarnarstni á spennu
 sem ganga í stöppu.

A-A

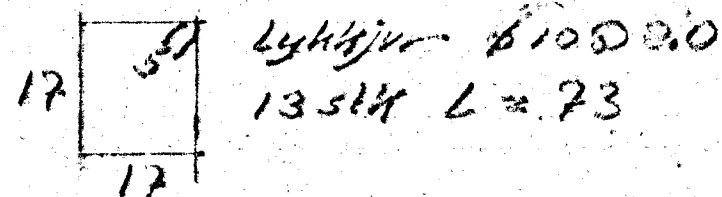
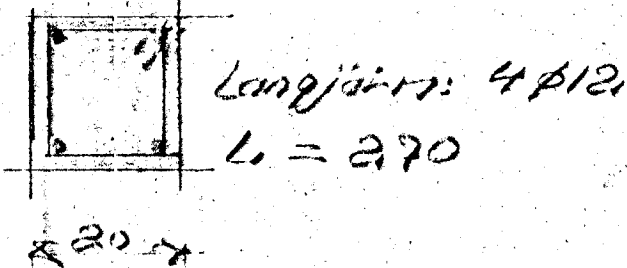


m. 1:10

B-B



S1



Reflavik 1. júlí 68.
 Eyth Jóhannsson.