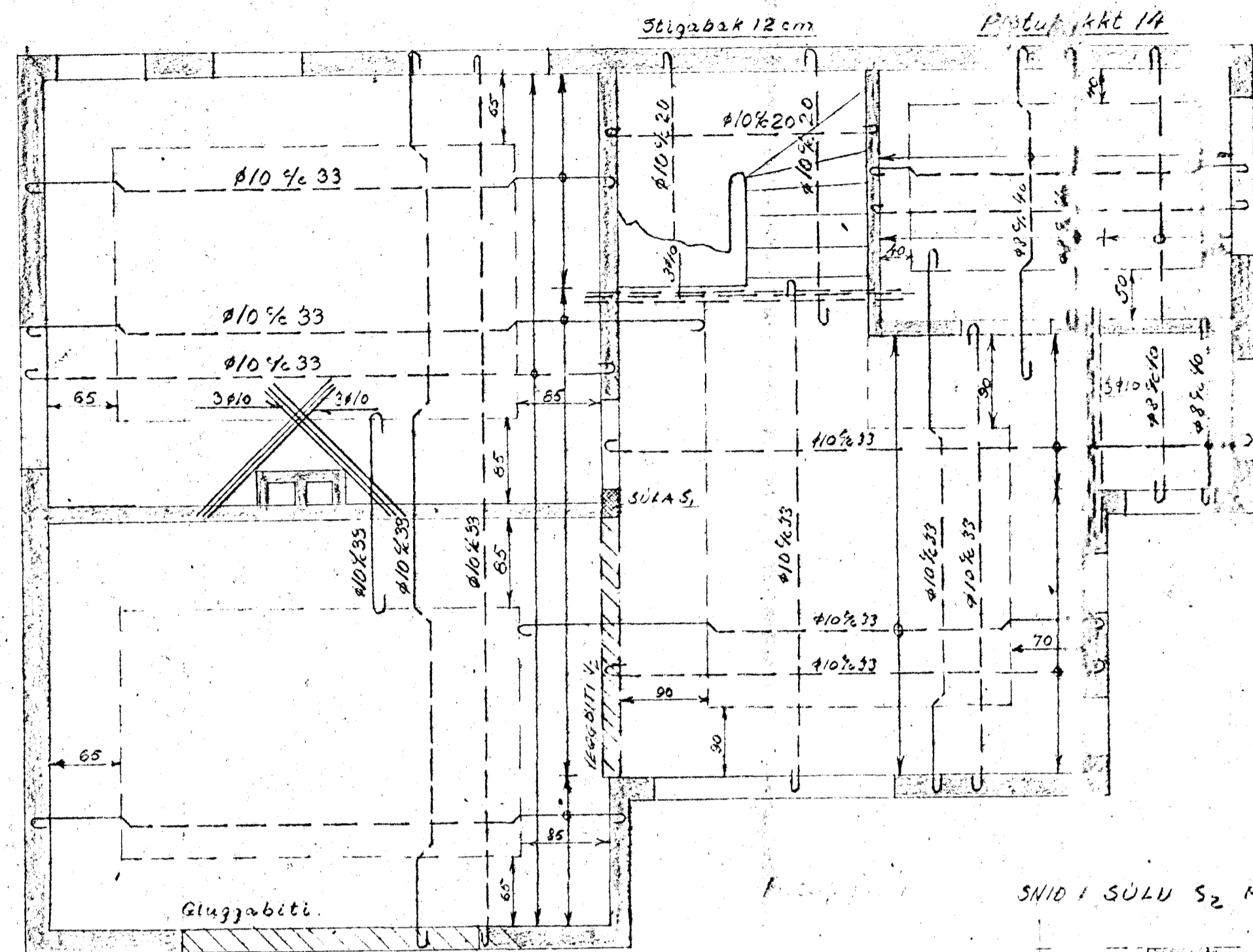
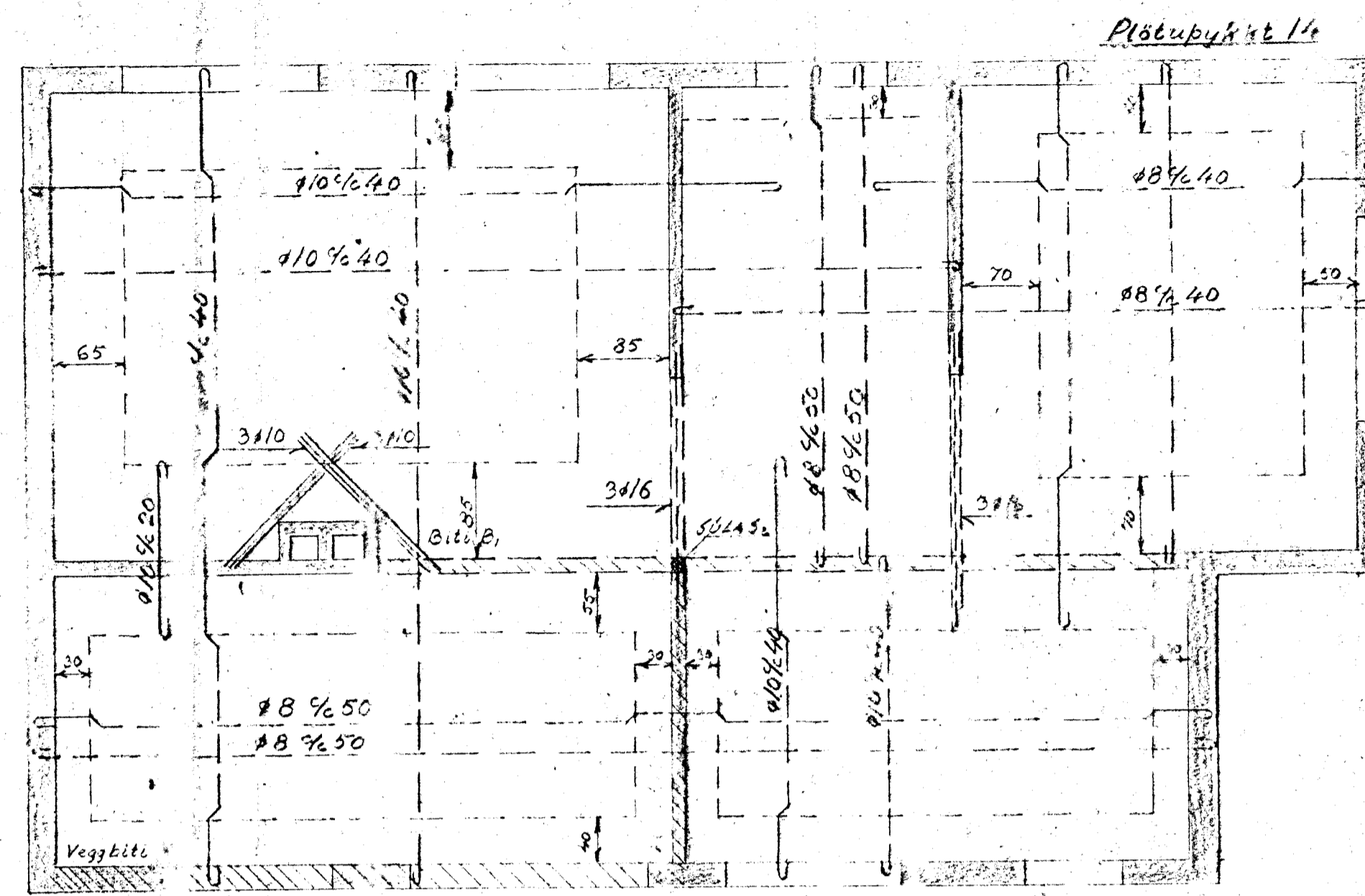


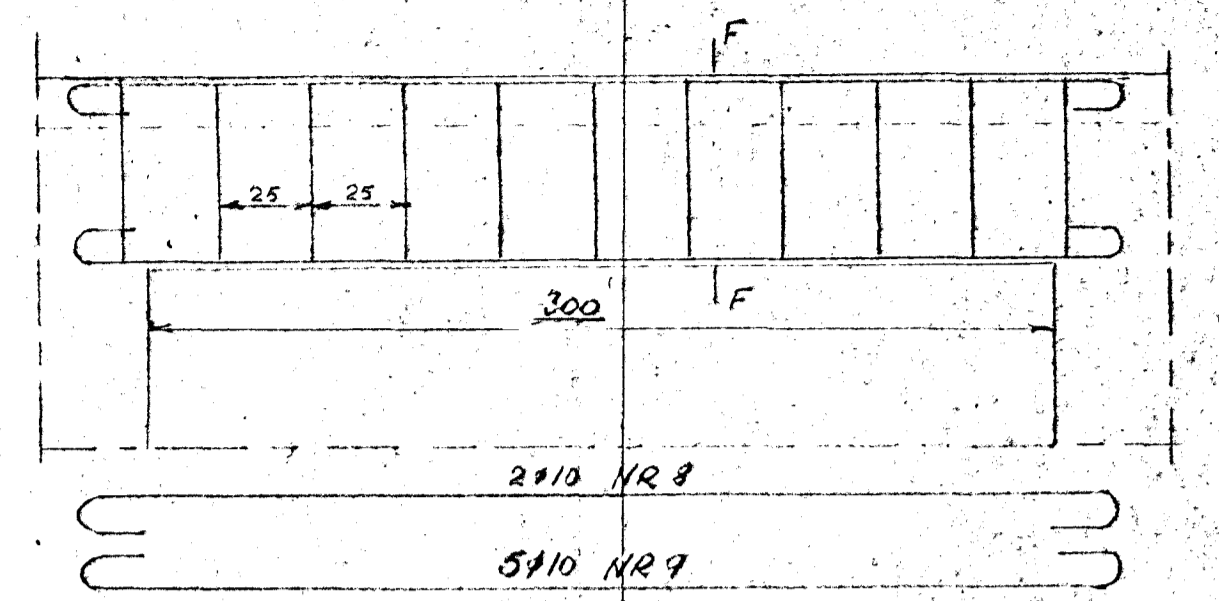
Plata yfir lhæð M:1:50



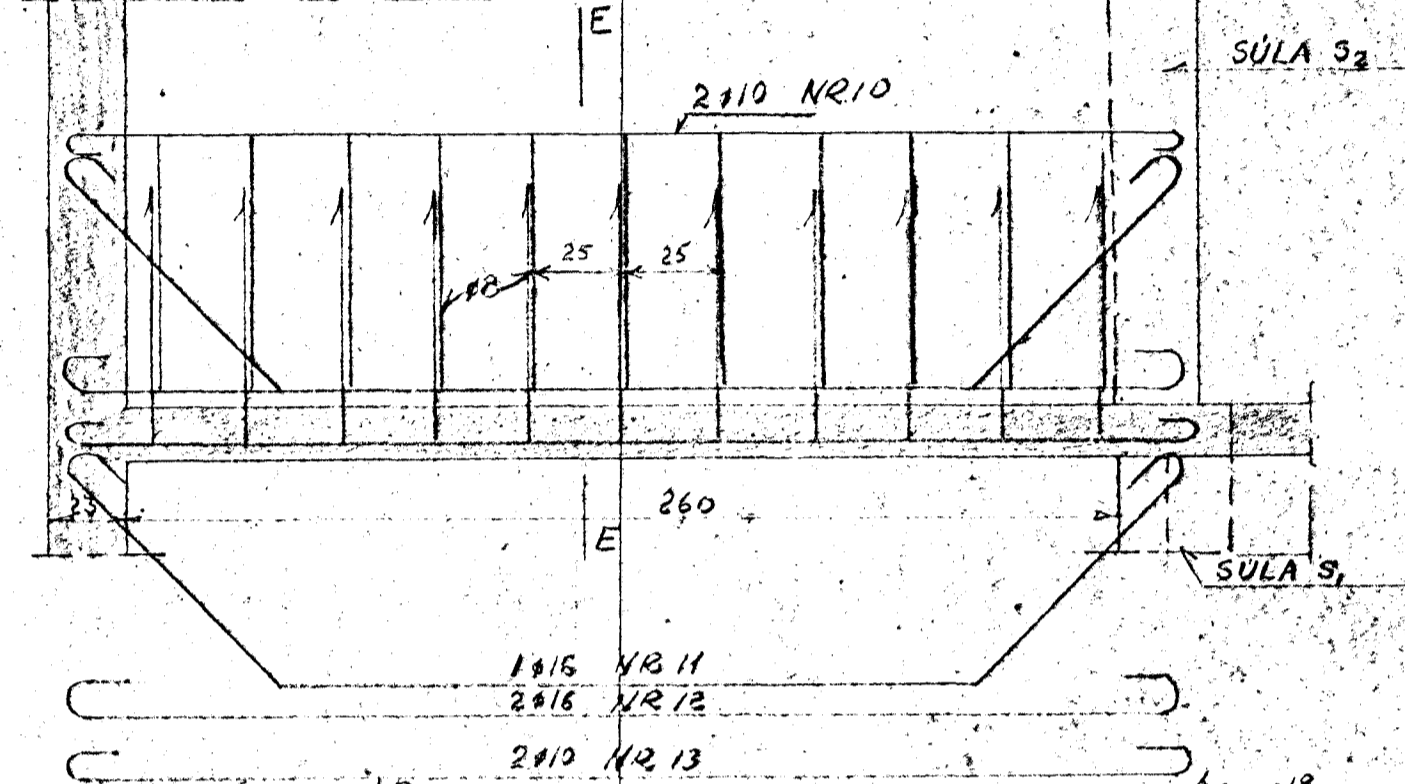
Plata yfir lhæð M:1:50



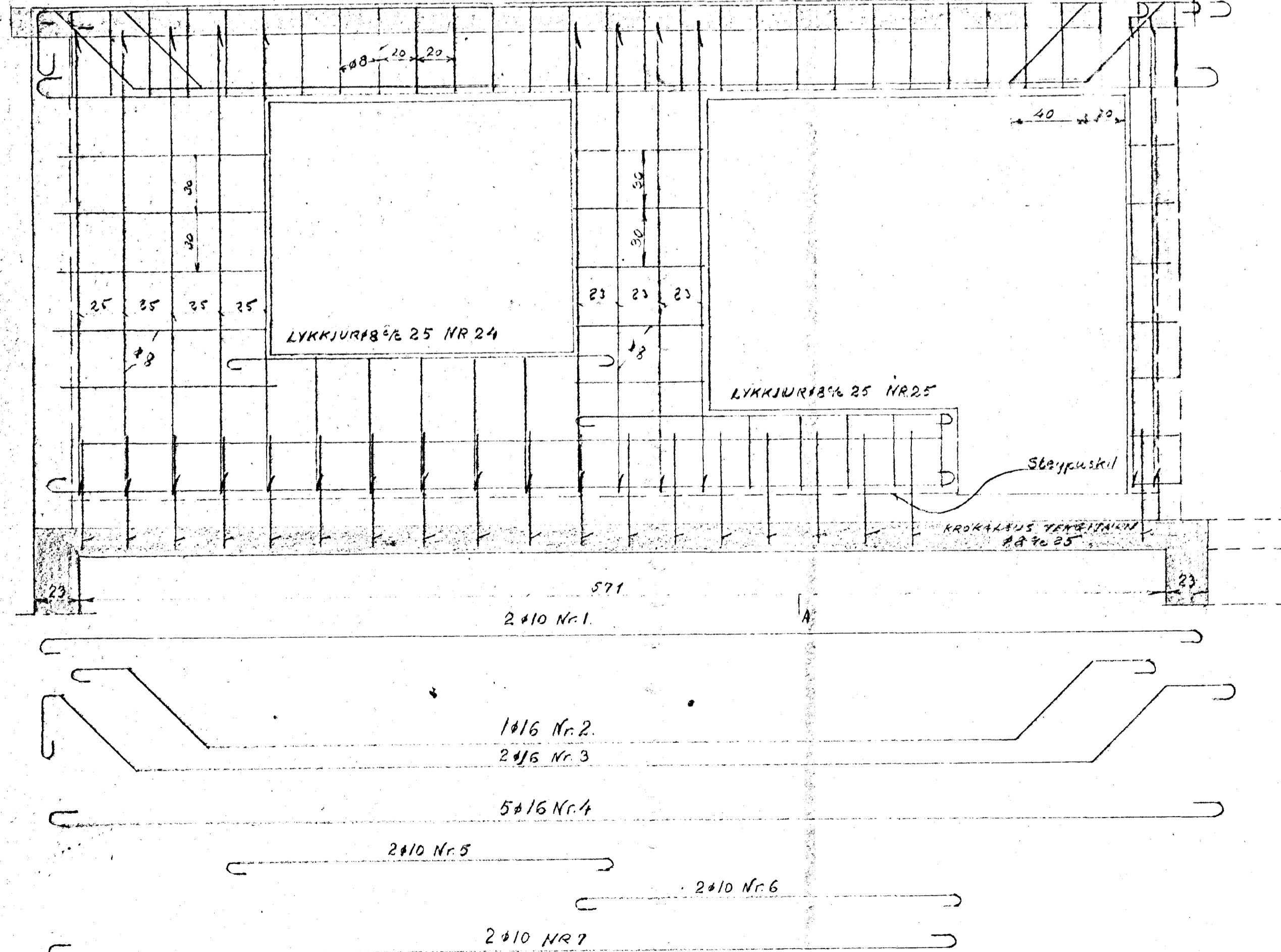
Gluggabíti M:1:20



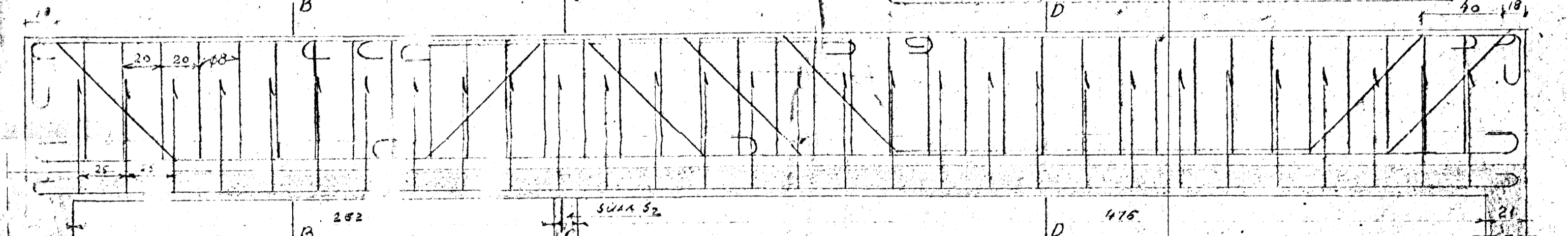
Veggbiti V₂ M:1:20



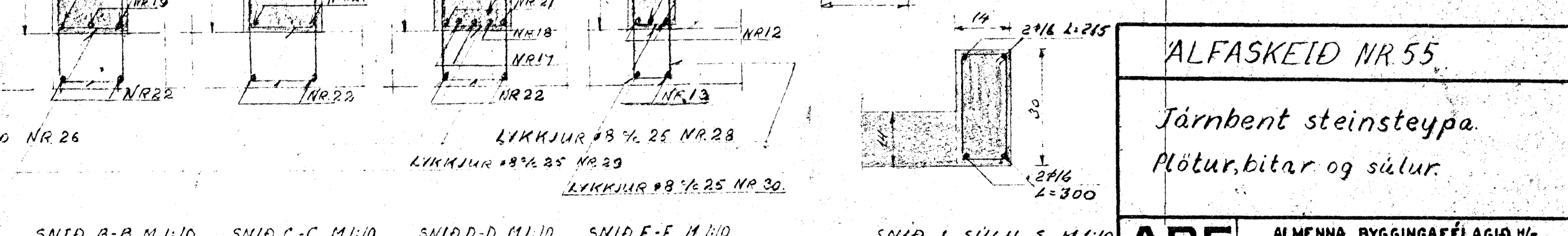
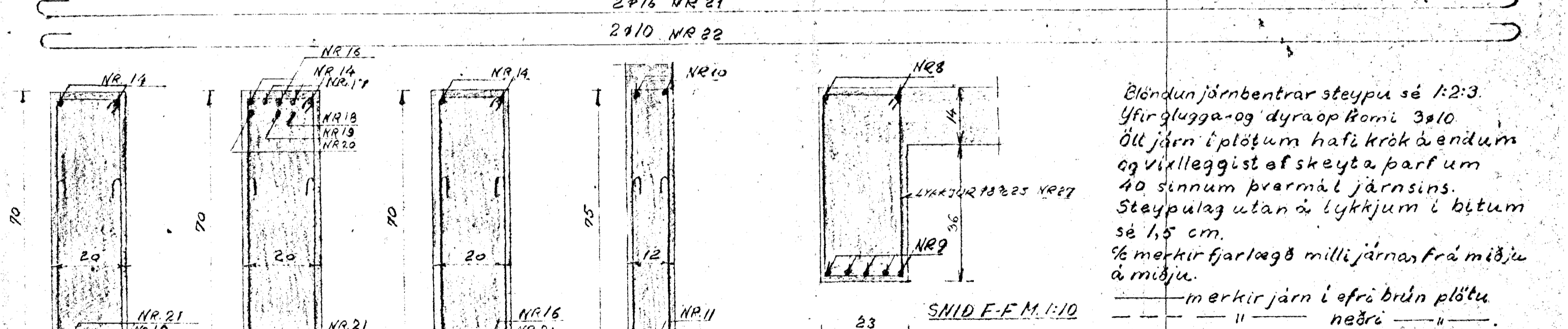
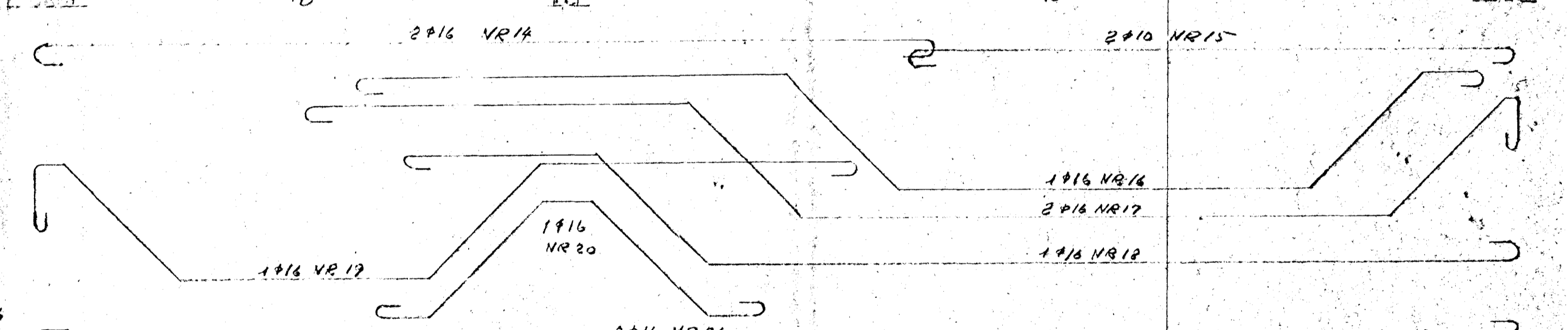
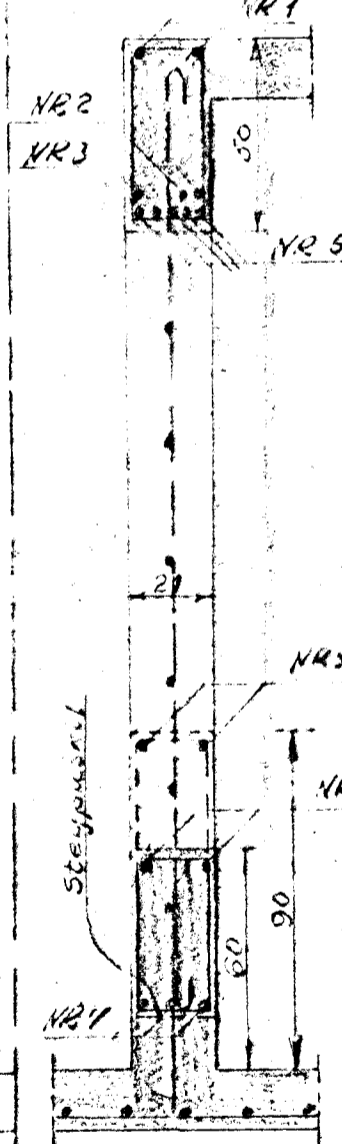
Veggbiti V₁ M:1:20 LYKKJUR # 20 NR 23



BITI B₁ M:1:20



SNID A-A M:1:20



Blöndun járnbenntar steypu sé 1:2:3.
Yfir glugga- og dyraop komi 3x10
Öll járn í plötum hafi krók á endum
og villeggist af skeyta þarf um
40 sinnum þræmál járnins.
Steypulag utan á lykklum í bitum
sé 1,5 cm.
% merkir fjarlægð milli járnna frá miðju
á miðju.
merkir járn í efri brún plötu
næðri " "

ALFASKEIÐ NR 55	
Járnbennt steinsteypa Plötur, bitar og súlur.	
ABF	ALMENNA BYGGINGAFÉLAGIÐ W/P BORGARTÚNI 7 REYKJAVÍK
M:1:10, 1:20 1:50	Útreikn.: <i>[Signature]</i> Uppdr.: <i>[Signature]</i>
Dags.: 24.9.56	Samþ. Ath.: <i>[Signature]</i> Nr. 35501

SNID B-B M:1:10 SNID C-C M:1:10 SNID D M:1:10 SNIDE-E M:1:10 SNID I SÚLU S₂ M:1:10