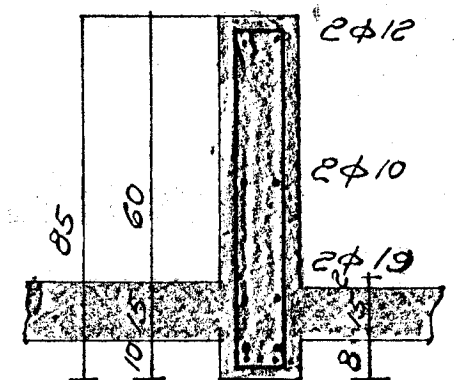
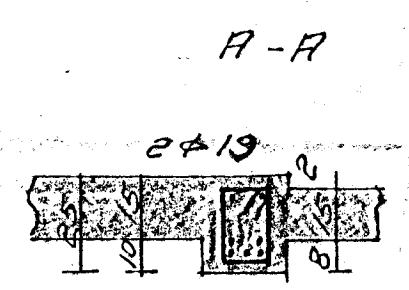
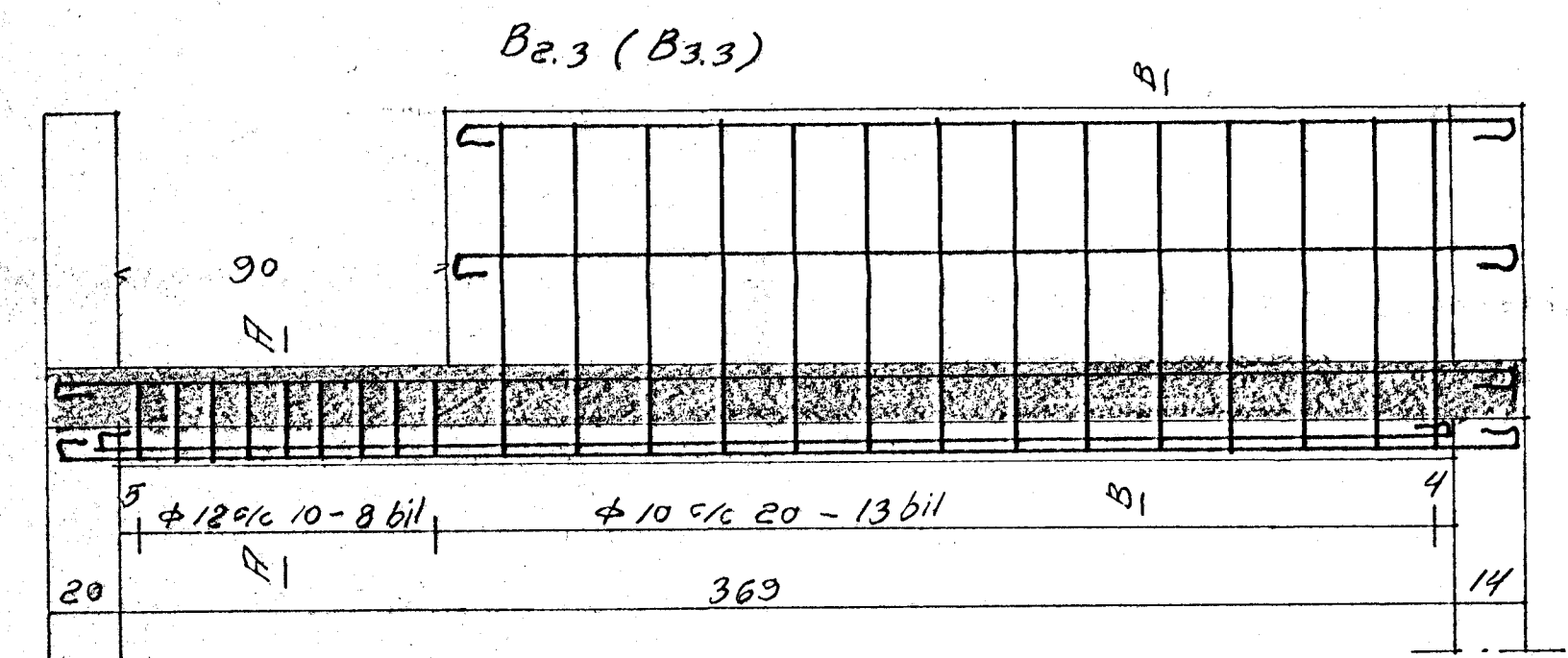
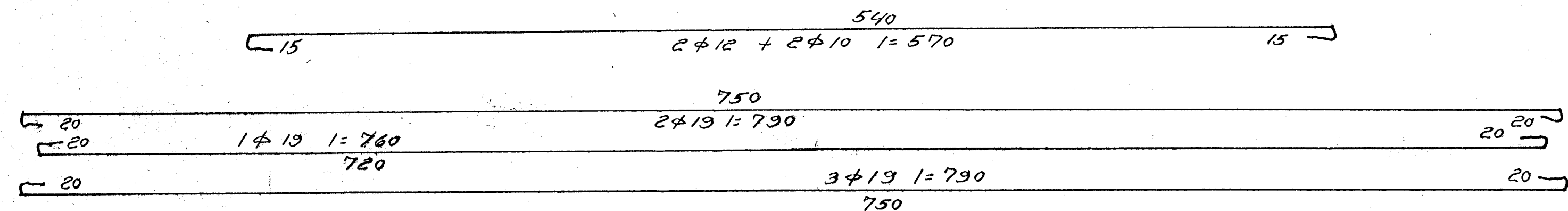


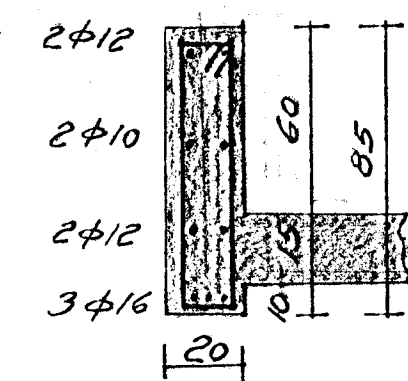
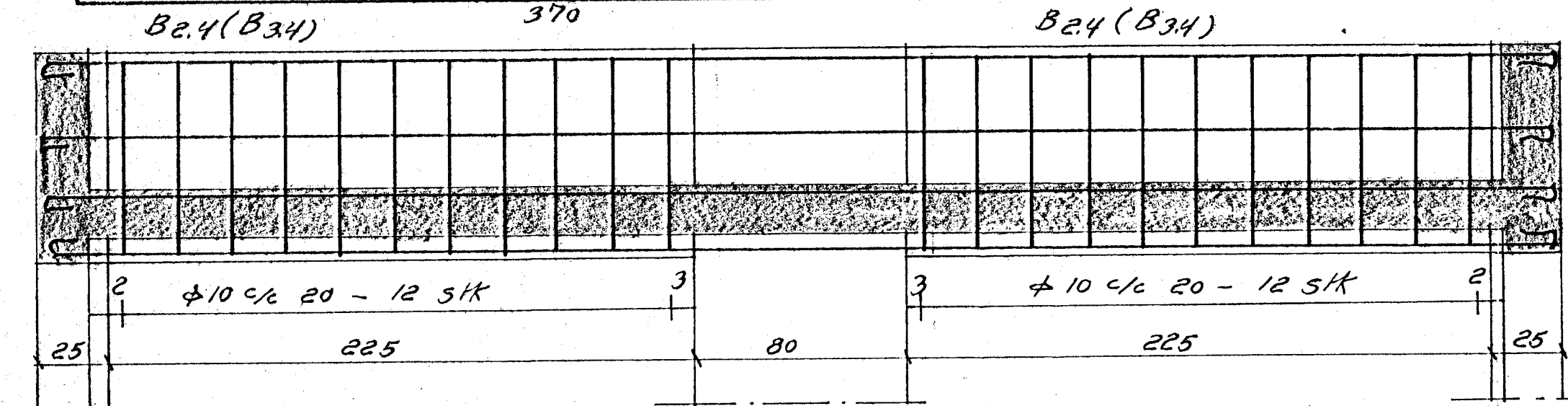
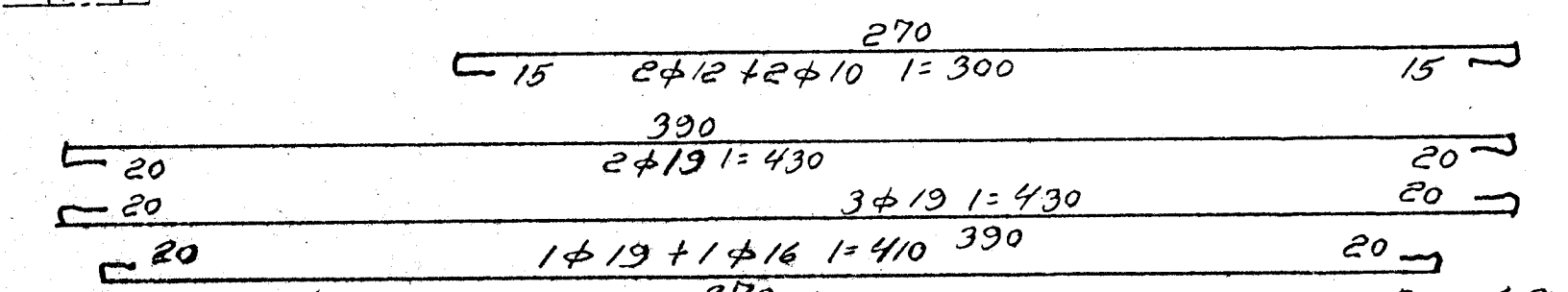
$\frac{11}{5}$
 $\frac{16}{16}$
 $\phi 12 \text{ c/c } 10$
 $= 84$
 18 stk

$\phi 10 \text{ c/c } 20$
 $= 200$
 26 stk

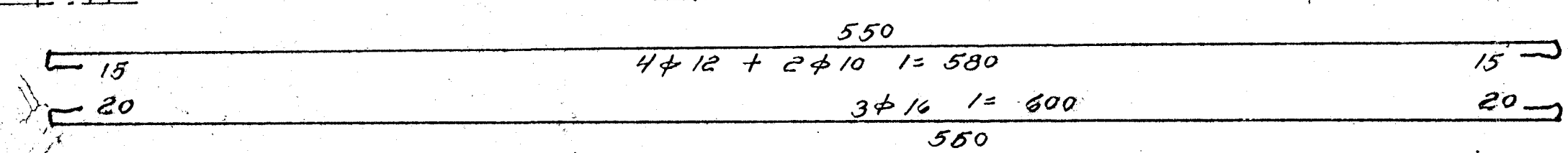


$\frac{11}{5}$
 $\frac{12}{16}$
 $\phi 12 \text{ c/c } 10$
 $= 84 - 9 \text{ stk}$

$\phi 10 \text{ c/c } 20$
 $= 200$
 14 stk



$\frac{11}{5}$
 $\frac{15}{15}$
 $\phi 10 \text{ c/c } 20$
 $= 200$
 24 stk



Benedikt B. Sigurðsson verkfr.		
Hilfasteið nr. 82 Hf.		
M.	1:20	Támbent skýpa.
D.	apr. '66	Bitar.
Nr.	5. 161	Bun. B. Sigurðsson.