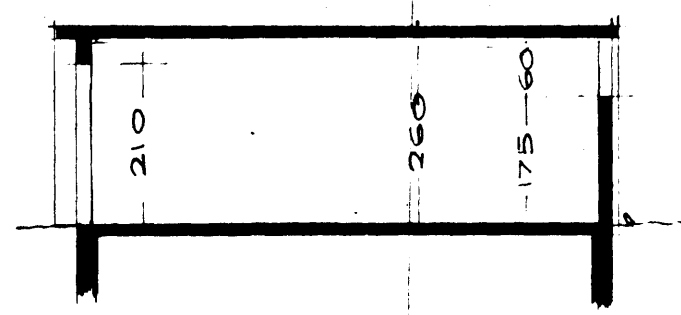
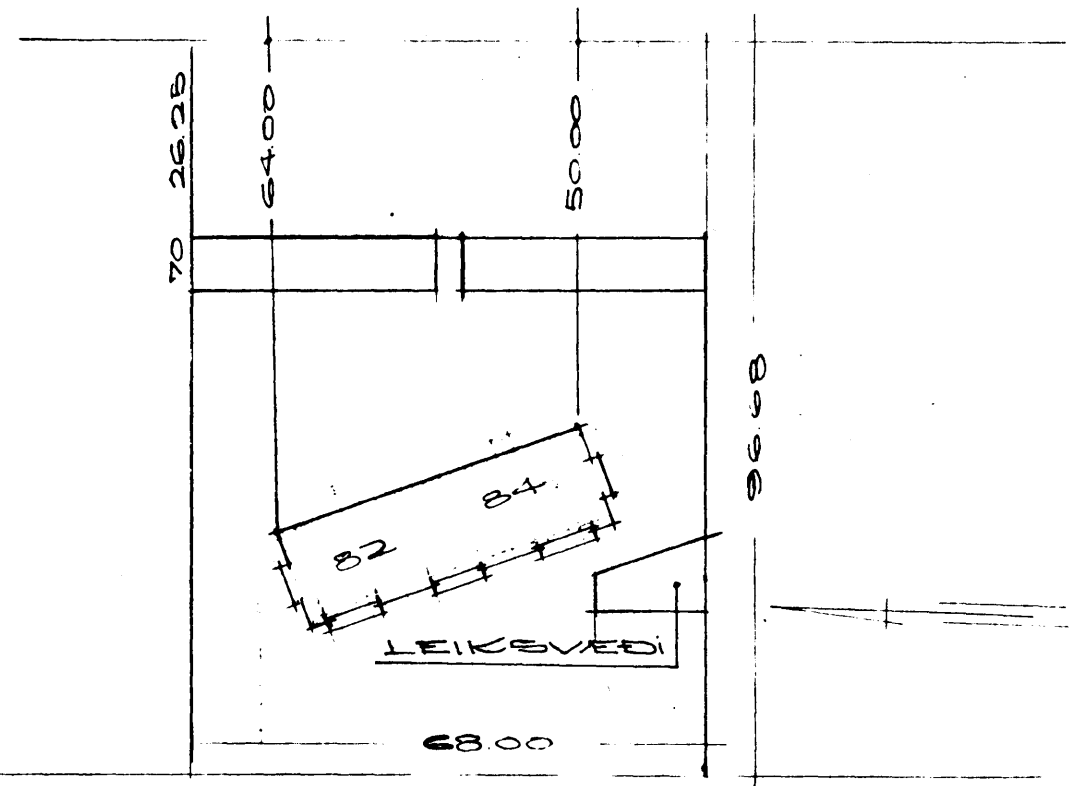


Samþykkt á fundi byggingar-  
nefndar þ. 14. 10. 1970  
BYGGINGARFRÓUNN  
HAFNAÐFIRÐI  
*E. Sigurðsson*

Verði geymslurnar byggðar í áföngum,  
skulu þær byggðar í samfelldri röð  
og byrjað á miðgeymslunni. Gærb hurða  
og annar frágangur skal samræmdur.



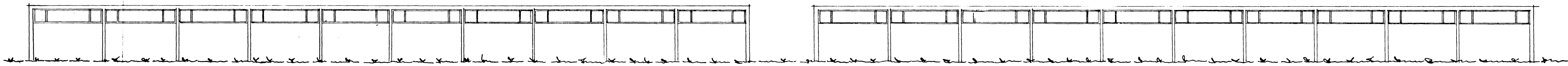
SKURÐUR



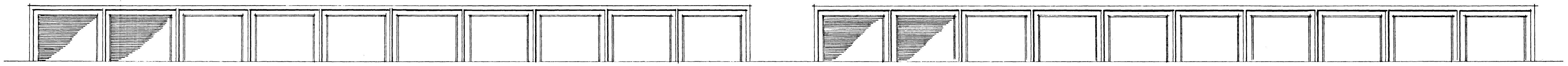
ALFASKEIÐ

AFSTÖÐUMYND M. 1:1000  
FLATARMÁL HÚSS 565,3 M<sup>2</sup> (3HÆÐ)  
SKÚRA 454,16 M<sup>2</sup>

$Bilg. 7,0 \times 68,0 = 476,0 \text{ m}^2 \times 2,60 = 1238 \text{ m}^3$

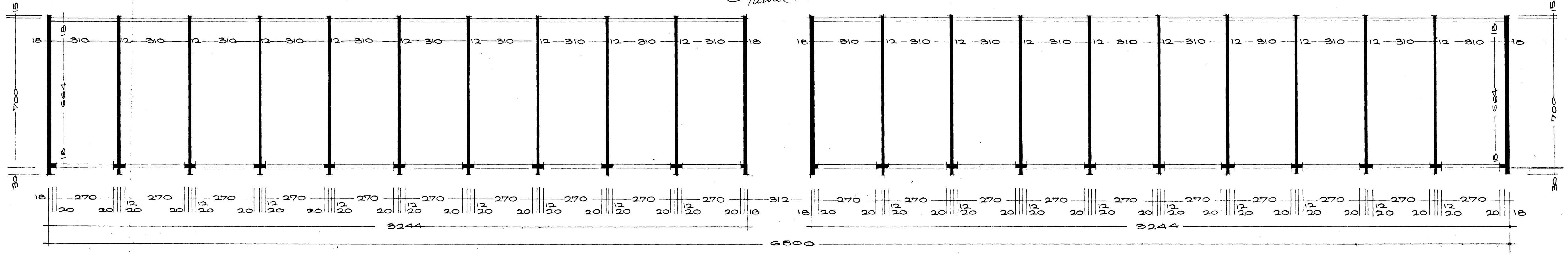


AUSTUR



VESTUR

*Ókast samþykkt og lútt hlíf  
stakki, sem feli svarar.  
Hlf. 9/10 1970  
Ólafur Steindóttir*



BILSKÚÐAR

GRUNNMYND

REYKJAVÍK Í OKT. 1968  
*Ólafur Steindóttir*