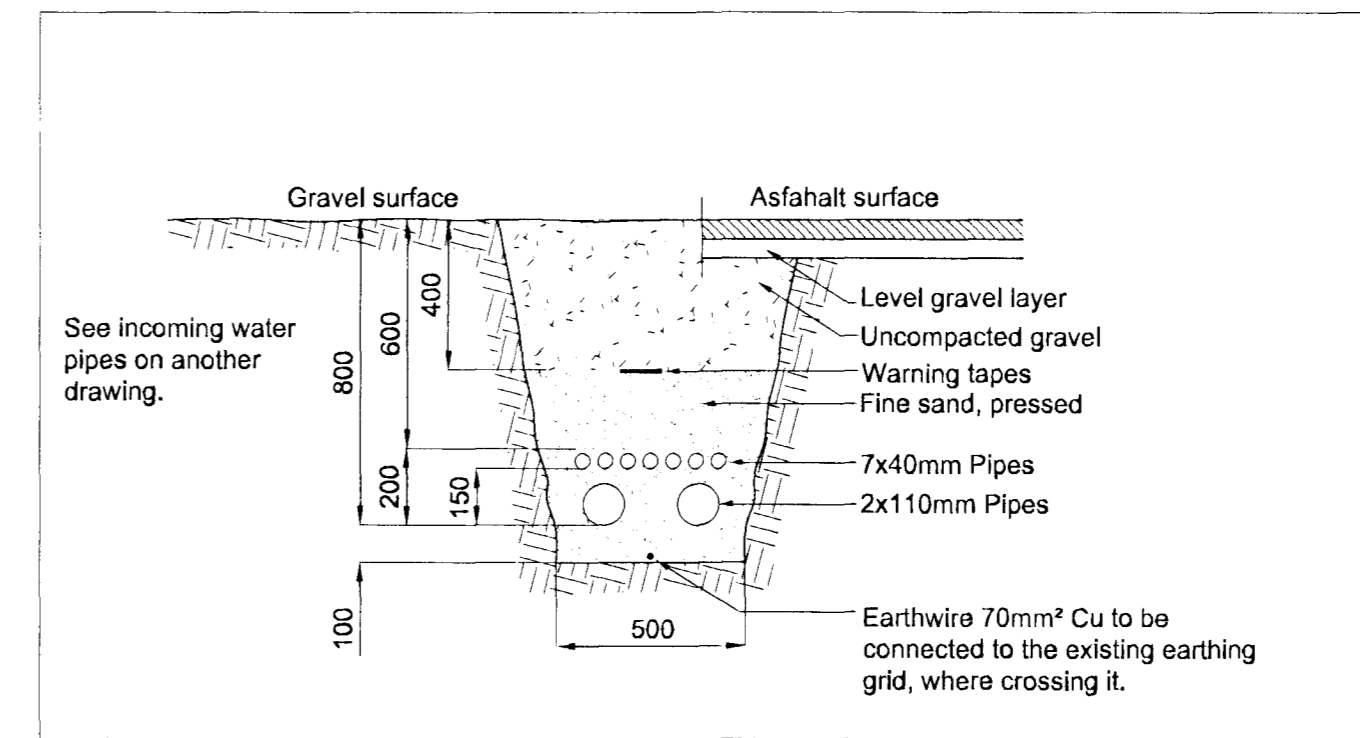
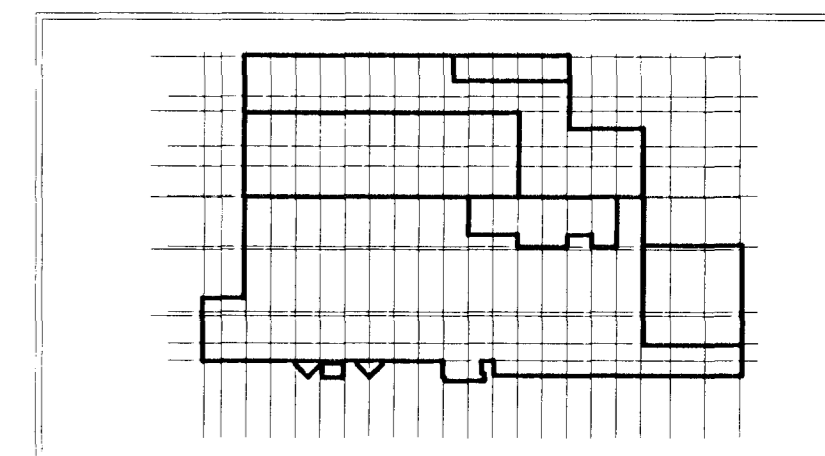
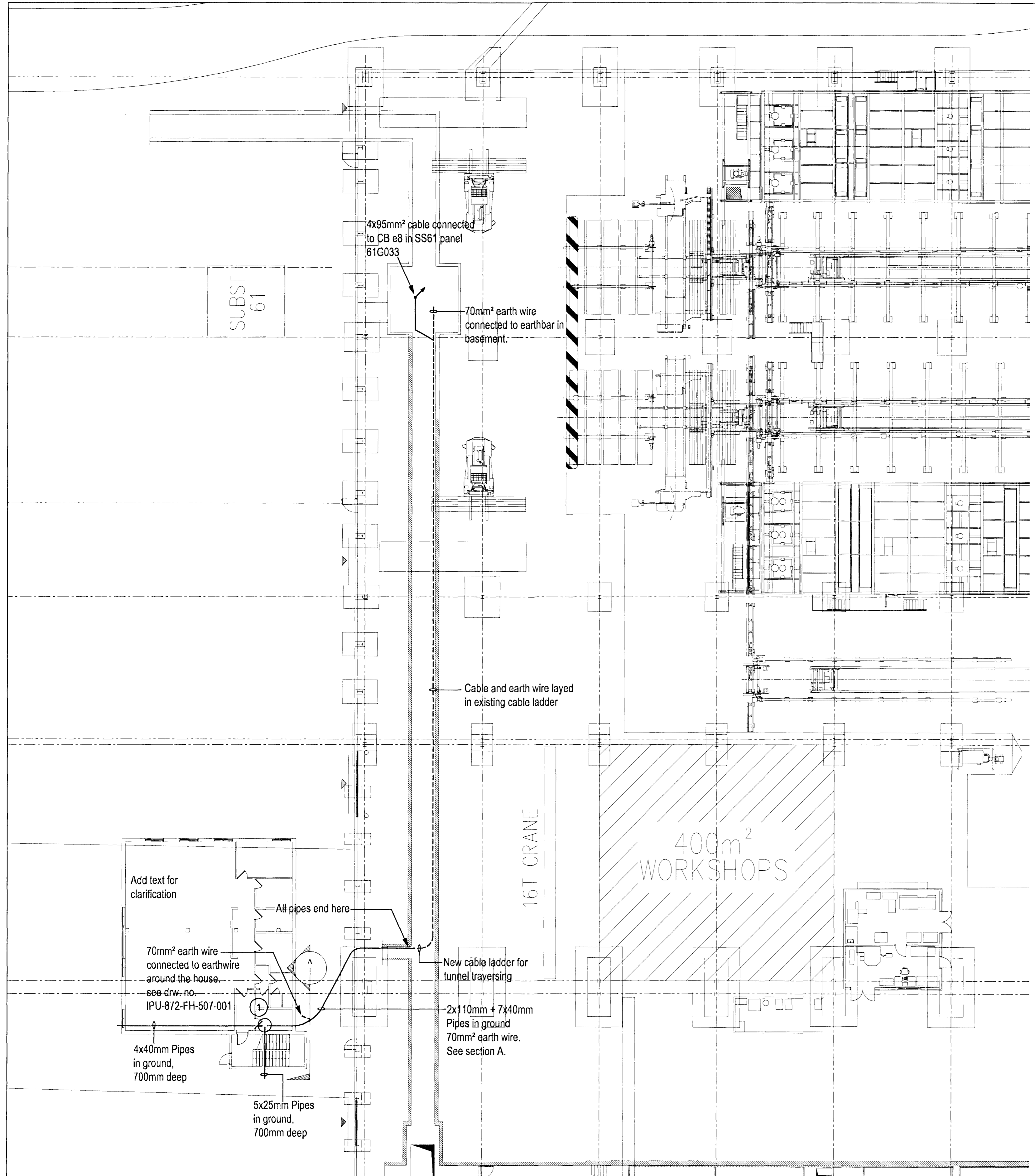


Móti: 23/9 2011
Stroloff

Nick Indriðsson
 tel. 181144-3947



A SECTION A
 Scale 1:20



ICC Casthouse Keyplan

Skýringar:
 Legend: Pipes extend from ground adjacent to new electrical panel

Útg. nr. / Rev. no.	Lýsing / Description	Dagsetning / Date	Har./Bn. / Des./Drw.	Yfir / Ök. /	Notk. heiti / Suppl. Ref.	Notk. heiti / ISAL Ref.
5	UPDATE DRAWING	2011.09.08	GJ	ARE		
4	Remove concrete plates and add text	2011.04.19	GJ	ARE	ÓS	MCBW
3	Issued for Construction	2011.04.06	GJ	ARE	ER	MCBW



Dagsetning / Date	2011.03.21
Hannað / Designed	GJ/ARE
Teikn. / Drawn	ÞLI
Verktaki / Supplier	HRV
Teikn. nr. verktaka / Supplier drw. no.	IPU-872-FB-507-001
Sambýkt / Approved	Yfir / Ök. / SK
Hluti af: / Part of:	

RioTinto Alcan Alcan Iceland Ltd
 Straumsvík 15-222 Hafnarþingur Ísland

ISAL Yfirfar og skrá. dags. / ISAL Checked, date ISAL Sambýkt. dags. / ISAL Approved, date

Flokkur nr. /	Blöð nr. /	Næsta bl. nr. /
IPU 872 - EPCM OFFICE ELECTRICAL PIPES AND FEEDER LAYOUT-GROUND & BASEMENT	15	
Kostn. nr. - Ccno. / Bn. nr. - Eq. no.		
AXS		
Teikn. nr. ISAL / Drw. no. of ISAL	Breyt. / Rev.	
	C	