

GENERAL NOTES

Elevations are in metres in Hafnarfjörður elevation system

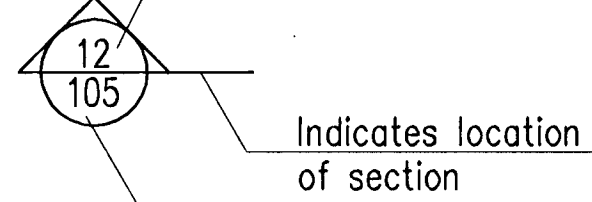
▽0.00 Stands for elevation 0,00 m on sections

●0.00 Stands for elevation 0,00 m on plans

All dimensions shown are either metres or millimetres

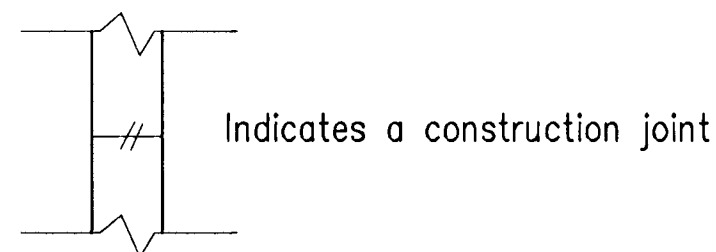
⊘200 Indicates thickness of wall or slab 200 mm

Detail no. 12



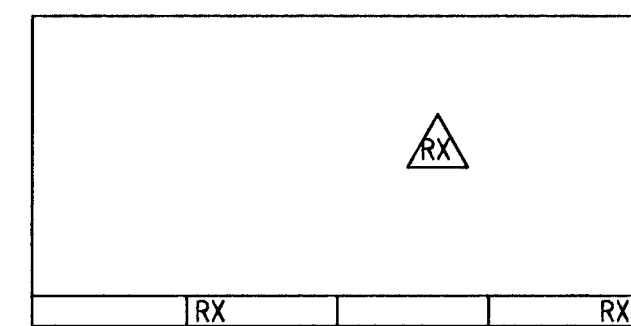
Indicates location of section

Shown on DWG no. 105



Indicates a construction joint

Revision no X shown on drawing:



GENERAL NOTES FOR CONCRETE

Concrete production.: see specification.

Concrete quality will be specified on relevant drawing.

Drawings will show where special concrete finishes are required.

Compressive strength will be determined by testing standard 150x300 mm cylinders in accordance with IST EN 206-1:2000.

Test cylinders shall be made and cured in accordance with IST EN 206-1:2000.

Execution of concrete structures: IST EN 13670-1:2009.

The concrete class prescribed for each structural component will be expressed in the form:

Cbb/cc:XEi-D

Where bb is the specified cylinder strength in MPa (IST EN 206-1:2000).

cc is the specified cubic strength in MPa (IST EN 206-1:2000).

XEi is the exposure class.

D is the normal maximum particle size in mm,

see standard technical specification.

Ready mix concrete.

Example: C30/37:XF3-38

GENERAL NOTES FOR REINFORCEMENT

Reinforcing bars shall be of the following quality:
B500C conforming to IST16:2006, marked as S Plain bars, marked as R, are of quality Fe 360

———— Ribbed bar without endhooks located in far face of a wall, or bottom face of a slab

----- Ribbed bar without endhooks located in near face of a wall, or top face of a slab

⊘k20c200-6000 Bars d=20 mm, length 6000 mm spacing 200 mm over the distance marked.

⊘s12c200 Stirrup, d=12 mm, spacing 200 mm

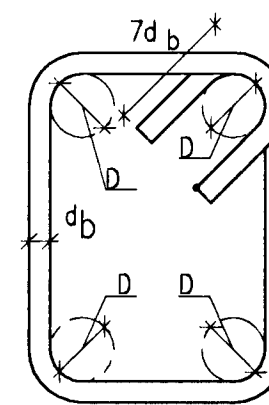
— Bar bent anchorage length into adjoining wall, slab or beam.

⊘200 Indicates thickness of construction element and direction of other bars in far face or nearer bars in near face.

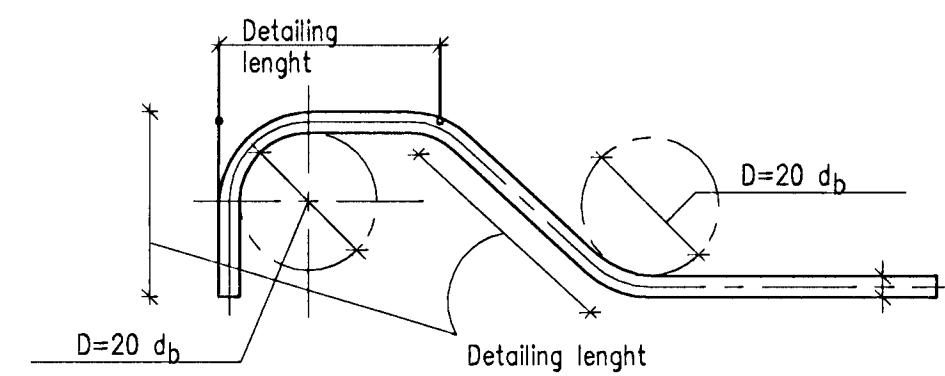
Concrete cover for reinforcement (tolerances acc. to FSENV1992)
Bottom face in foundations 50 mm
Outside surface 40 mm
Other surfaces 30 mm

REINFORCEMENT STIRRUPS

D=3 d_b or diameter of enclosed bar

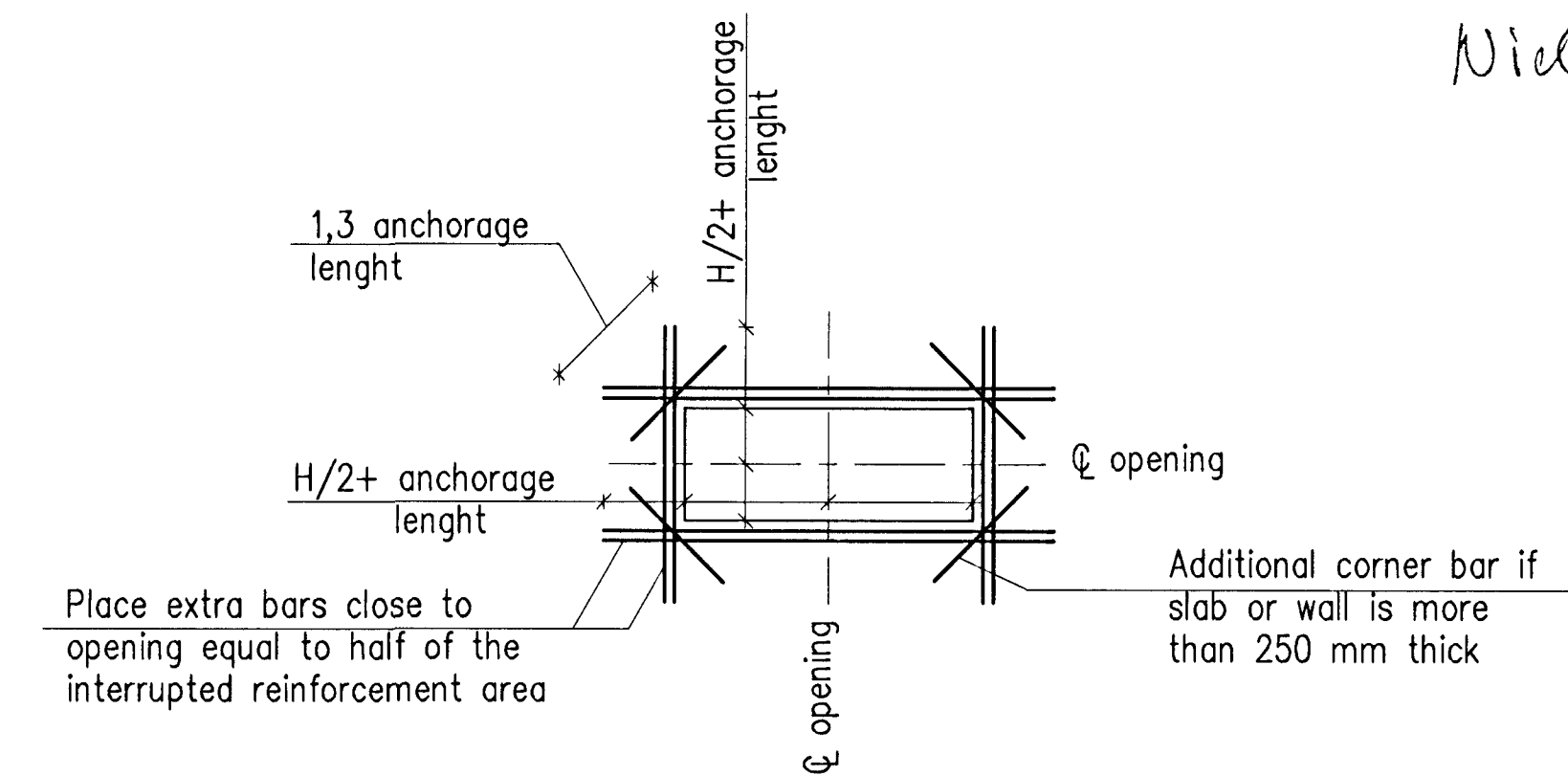


REINFORCEMENT BENDING



REINFORCEMENT AROUND OPENINGS

(if not shown otherwise)



EARTHING

See dwg. no. ICC-611-FA-518-004 and ICC-611-FA-518-005.

Samþykkt þann
26 OCT 2012
Byggingafulltrúinn í Hafnarfjörð
Fh. Sigurður Steinar Jónsson

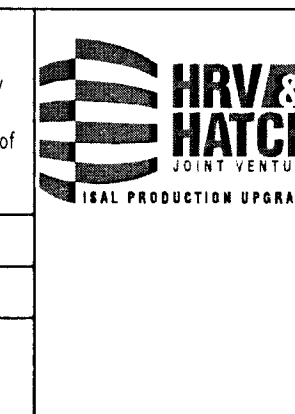
Níels Indriðason
Kt. 181144-3949 NI

Skýringar:
Legend:

Stig nr / Rev no	Lýsing / Description	Dagsetning / Date	Höf / Rn / Des / Dwg	Yfir / Old	Notk heim / Suppl Ref	Notk heim / ISAL Ref
3	Record drawing	2012.09.20	GMG	NI	TE	re3.0

This drawing is the property of Rio Tinto Alcan Iceland Ltd. and handed out for personal use only. It may neither be copied nor made available to others without permission of Rio Tinto Alcan Iceland Ltd. The receiver is liable for any misuse.

Stærð: A1 Mkv.: Scale: Dimensions without tolerances according to ISO 2768-1 medium.



Dagsetning / Date: 2011.03.12
Hannað / Designed: HFB
Tekin / Drawn: ÁFV
Verktaki / Supplier: HRV
Tekin nr. verktaka / Supplier drw. no.: IDP-212-CA-062-001
Sambykkt / Approved: NI
Húli af / Part of: HJH

IPU 212 - SUBSTATION 140 CIVIL WORK GENERAL NOTES		Flokkur nr.: 4011	Blað nr.: 16406	Næsta bl. nr.:
Teg. teikningur / Dwg. type: FORMWORK		AKS UB140		
Rio Tinto Alcan		ISAL Tökn. nr. ISAL / Drw. no. of ISAL: 251417	Breyt./Rev.: A	
ISAL Vefur og skýð, daga / ISAL Checked, date		ISAL Samþykkt, daga / ISAL Approval, date		