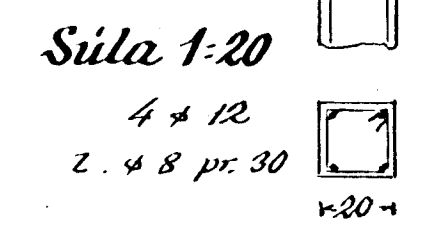
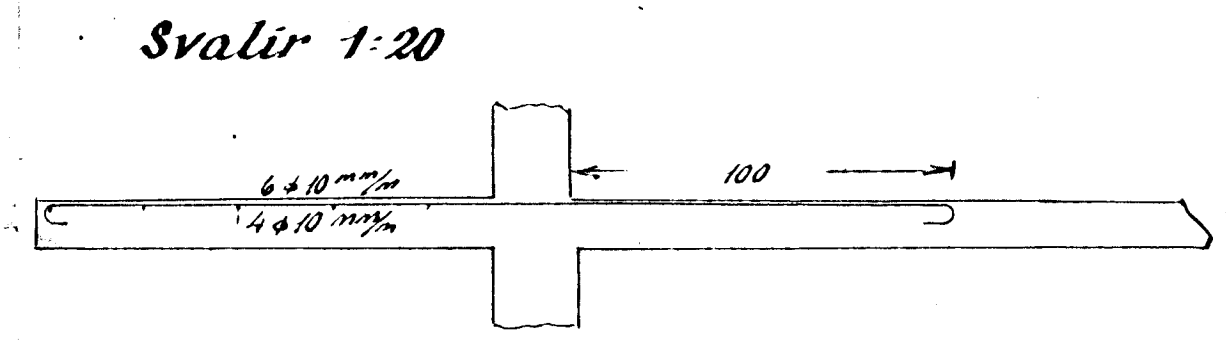
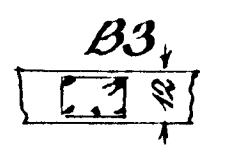
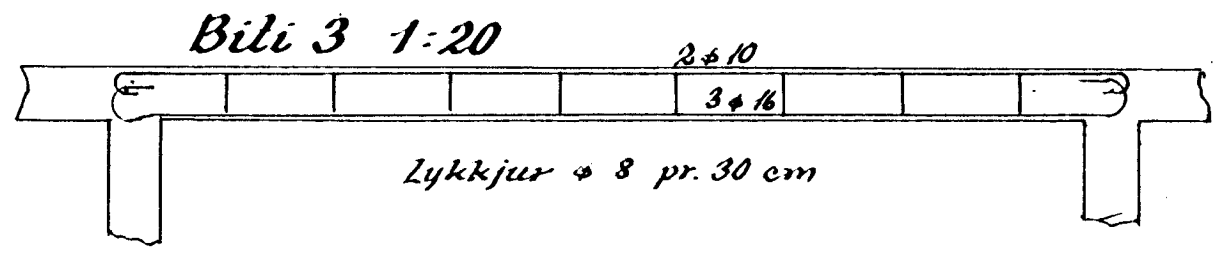
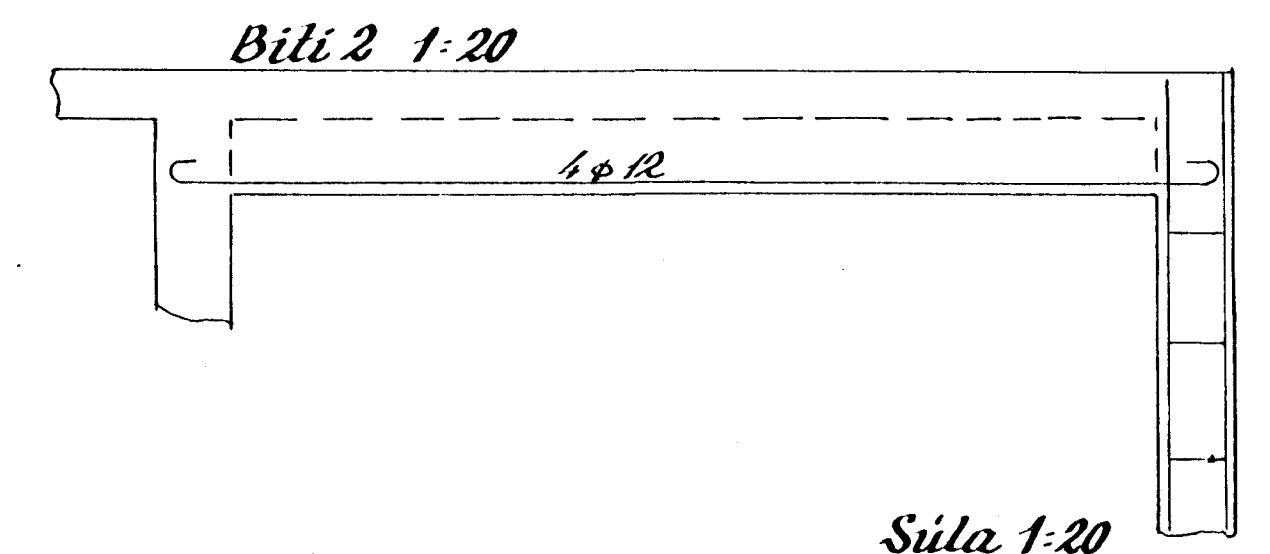
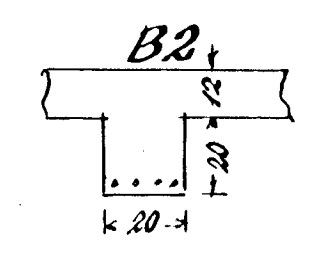
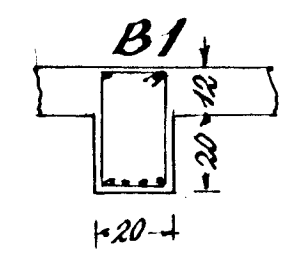
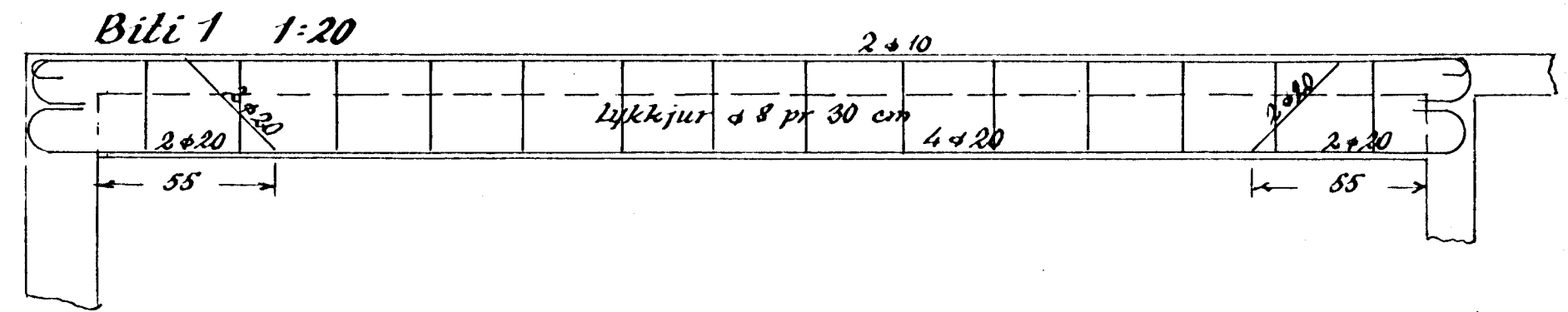
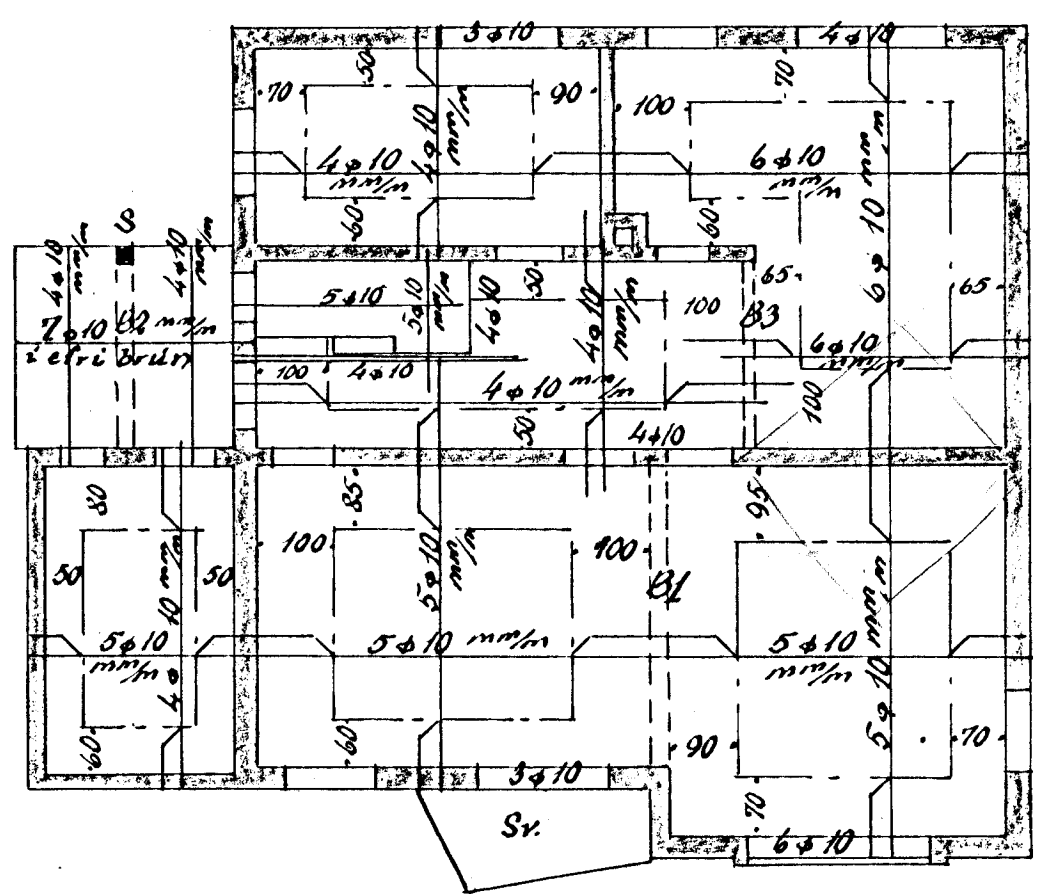


Arnarhraun nr. 15  
Eig. Halldór Hjartarson

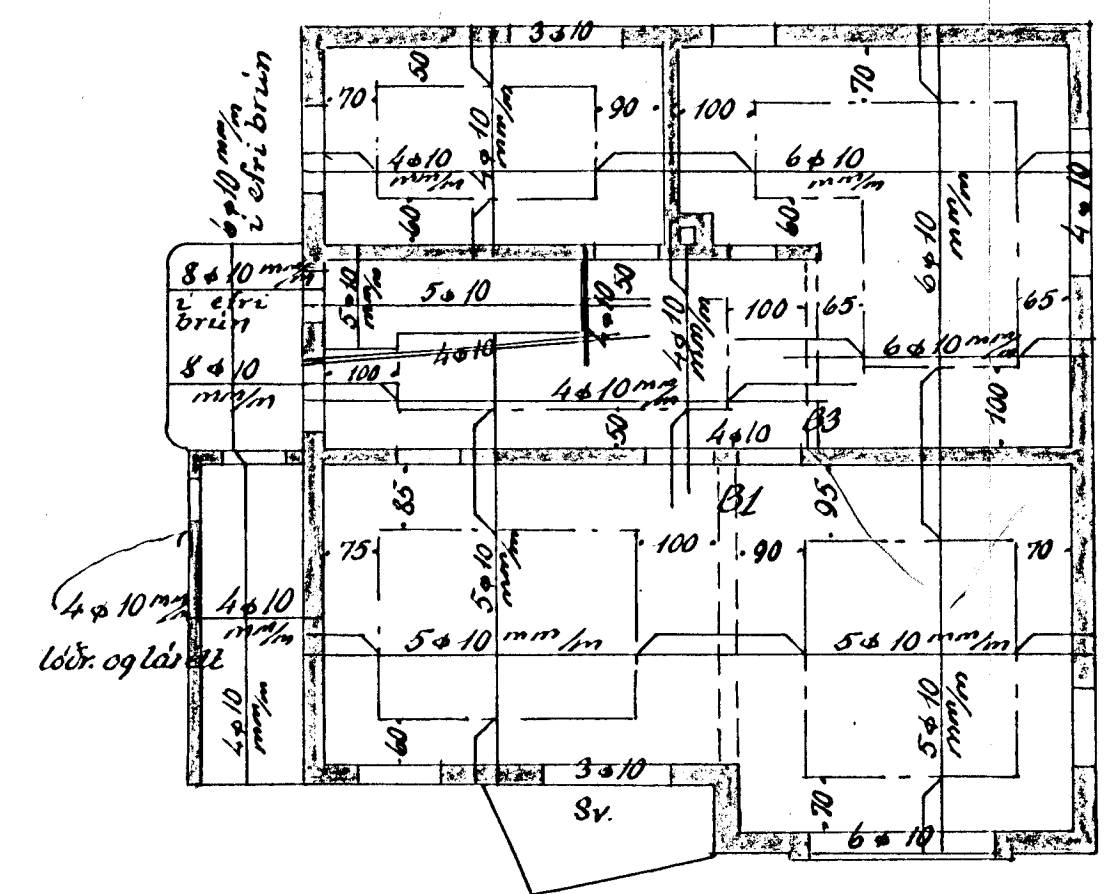
Járnbent steinsteypa



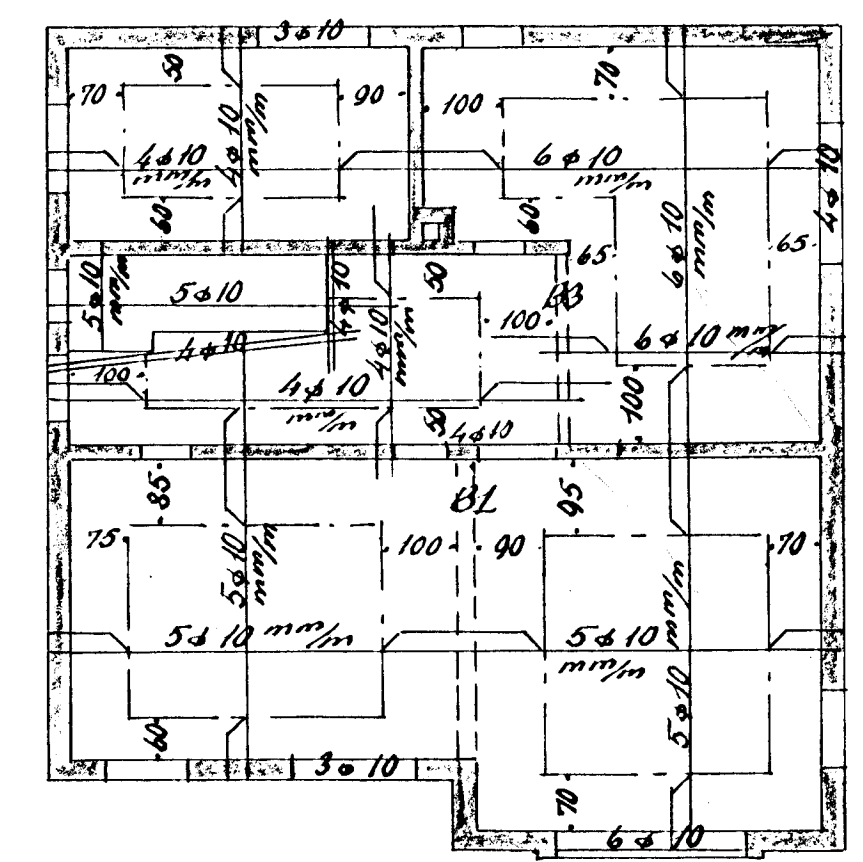
Blöndun steypu 1:3:3  
Yfir dyr og glugga komi 2x10, nema annars sé gæið  
Plöslupykktir alstaðar 12 cm



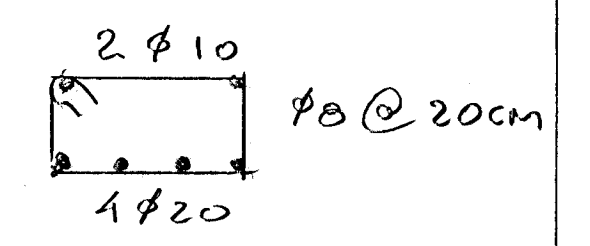
Lofl yfir kjallara 1:100



Lofl yfir 1. hæð 1:100



Lofl yfir 2. hæð 1:100



Hafnarfirði í ág. 59  
Sig. J. Ólafsson