

ARNARHRAUN N° 22.

Grunnmyndir snæðing í m 1:100

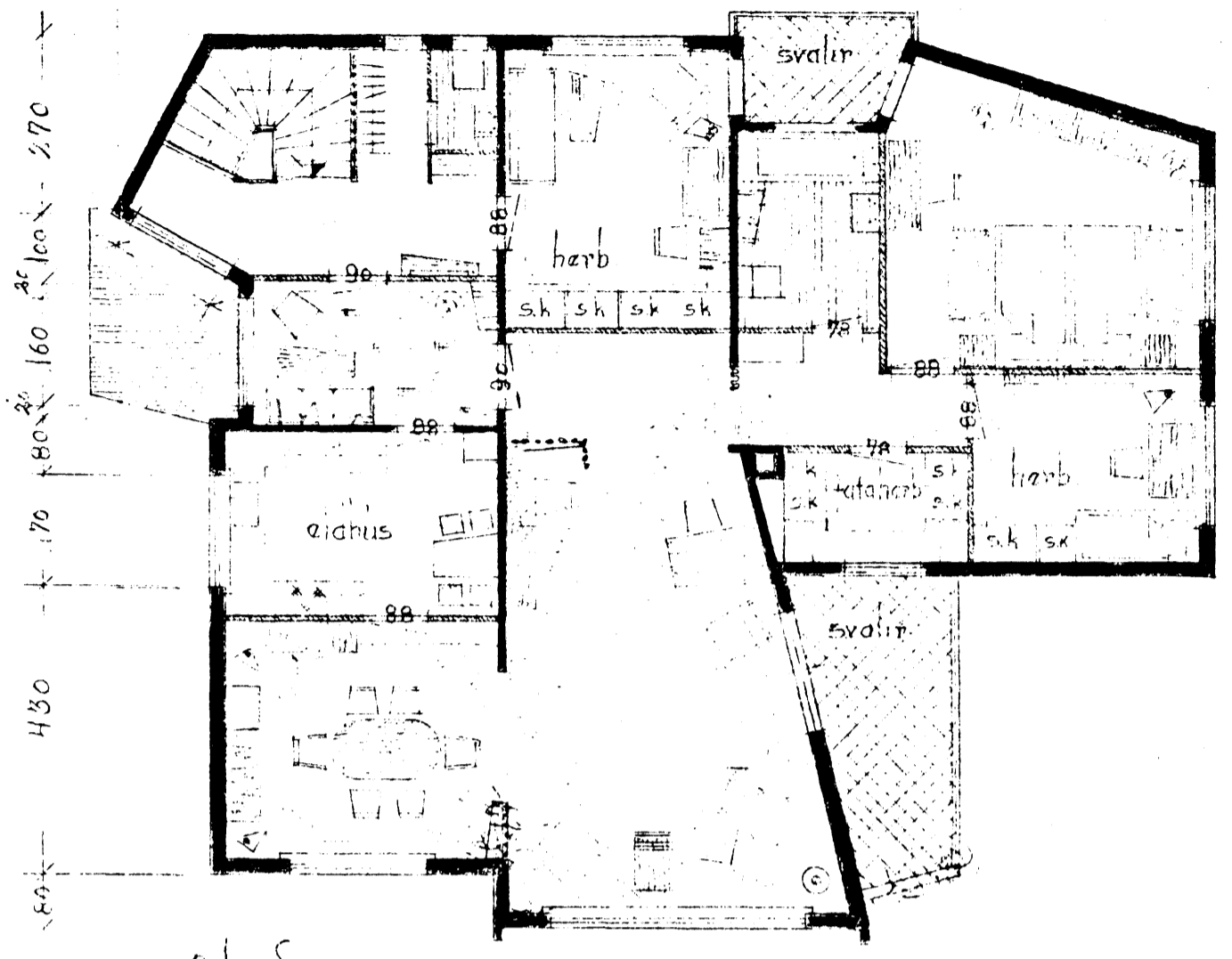
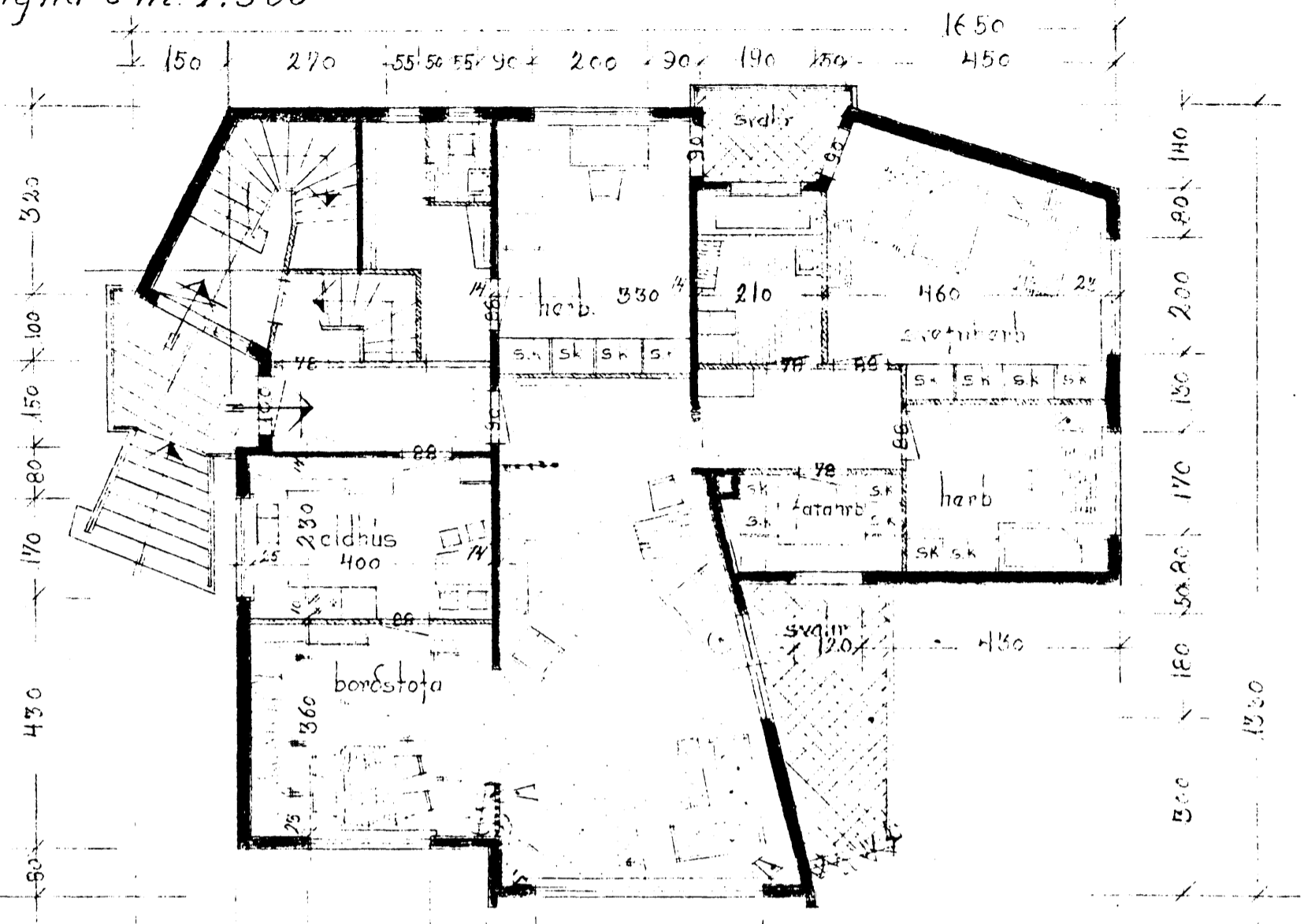
Afstöðumynd í m 1:500

Samþykkt á fundi byggingarnefndar,
haldinn 29/1, 1960

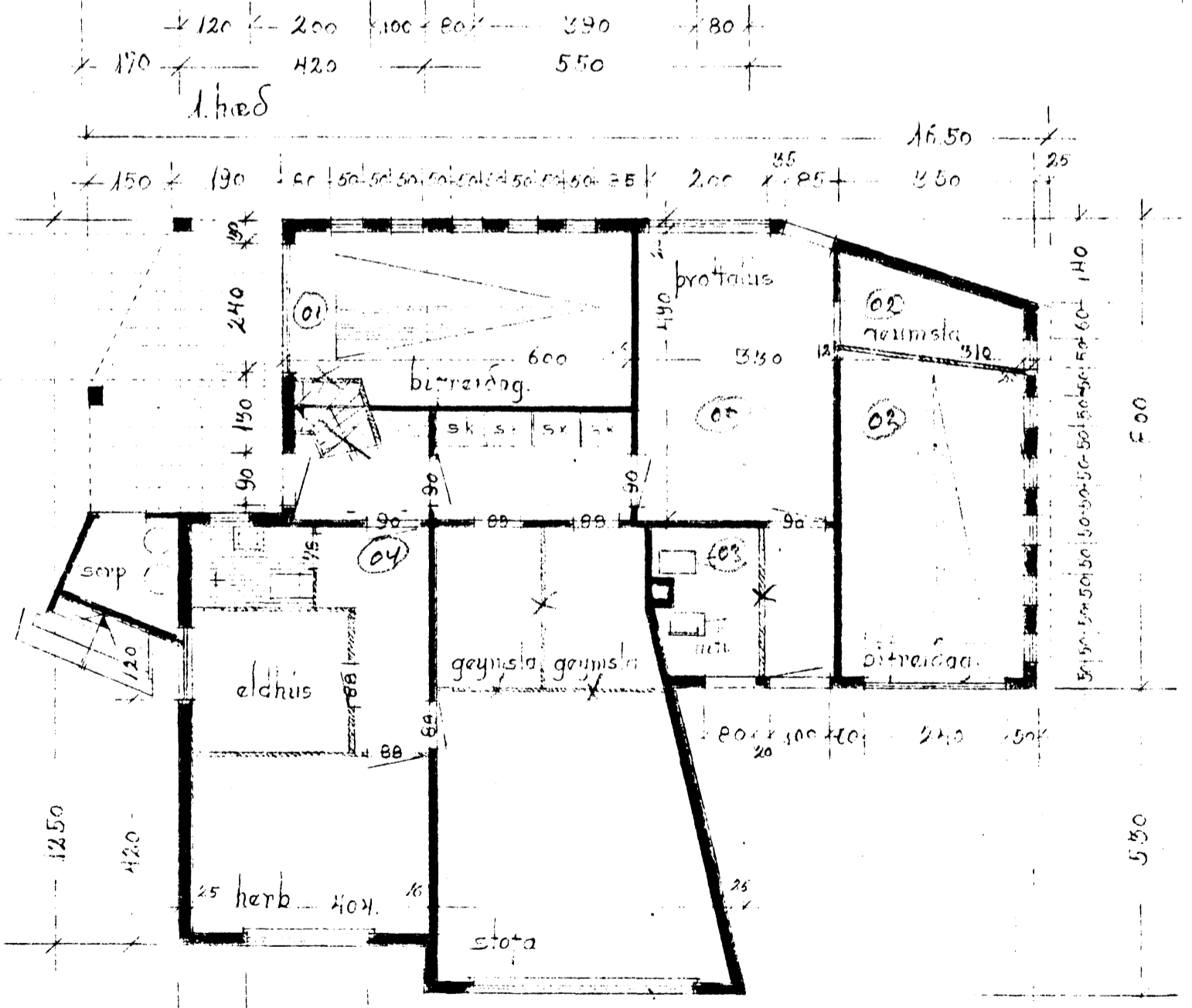
Jón Bergsson

Plað nr. 1

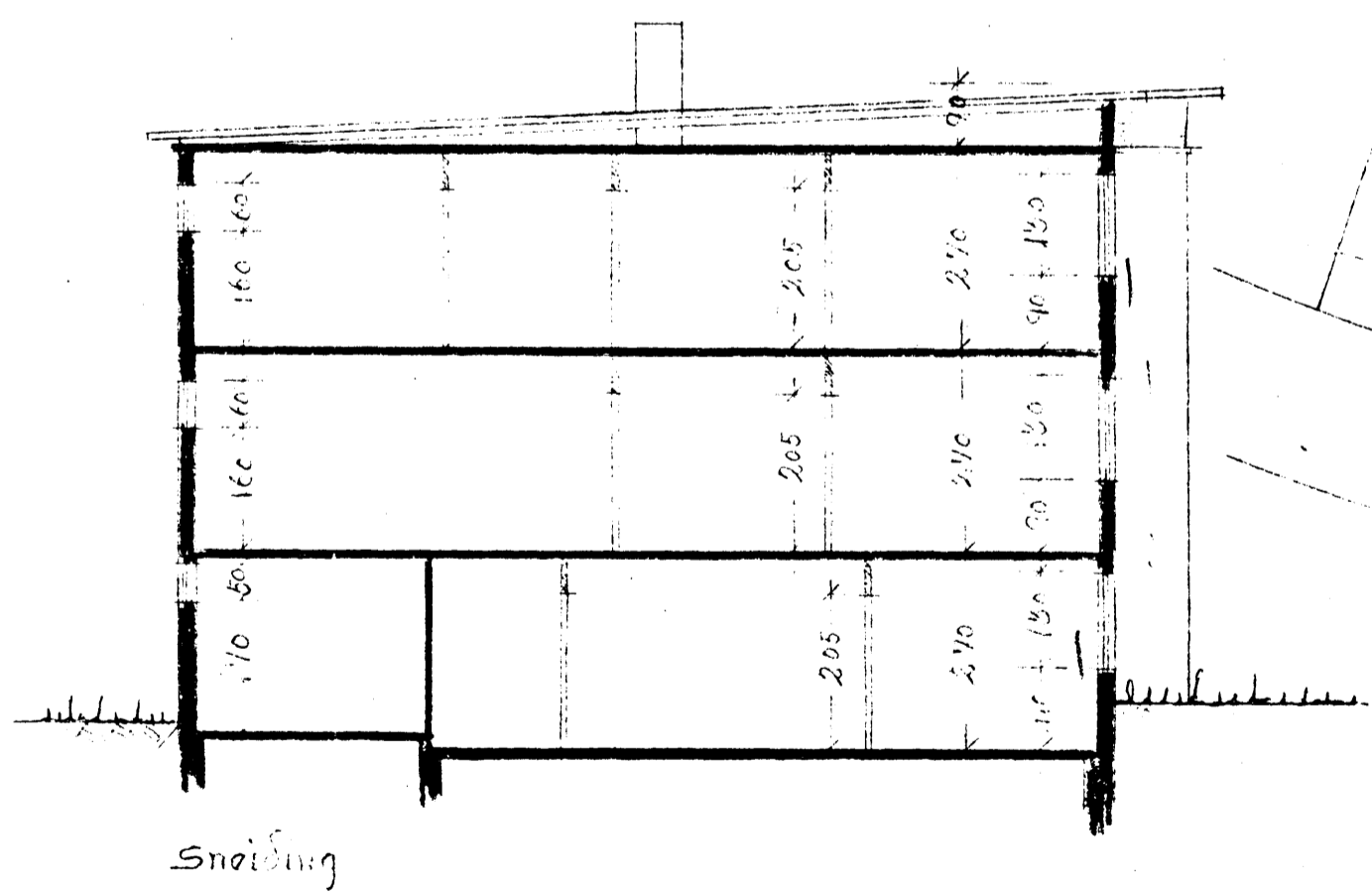
Emil Pjetursson
Pjetur Stefánsson



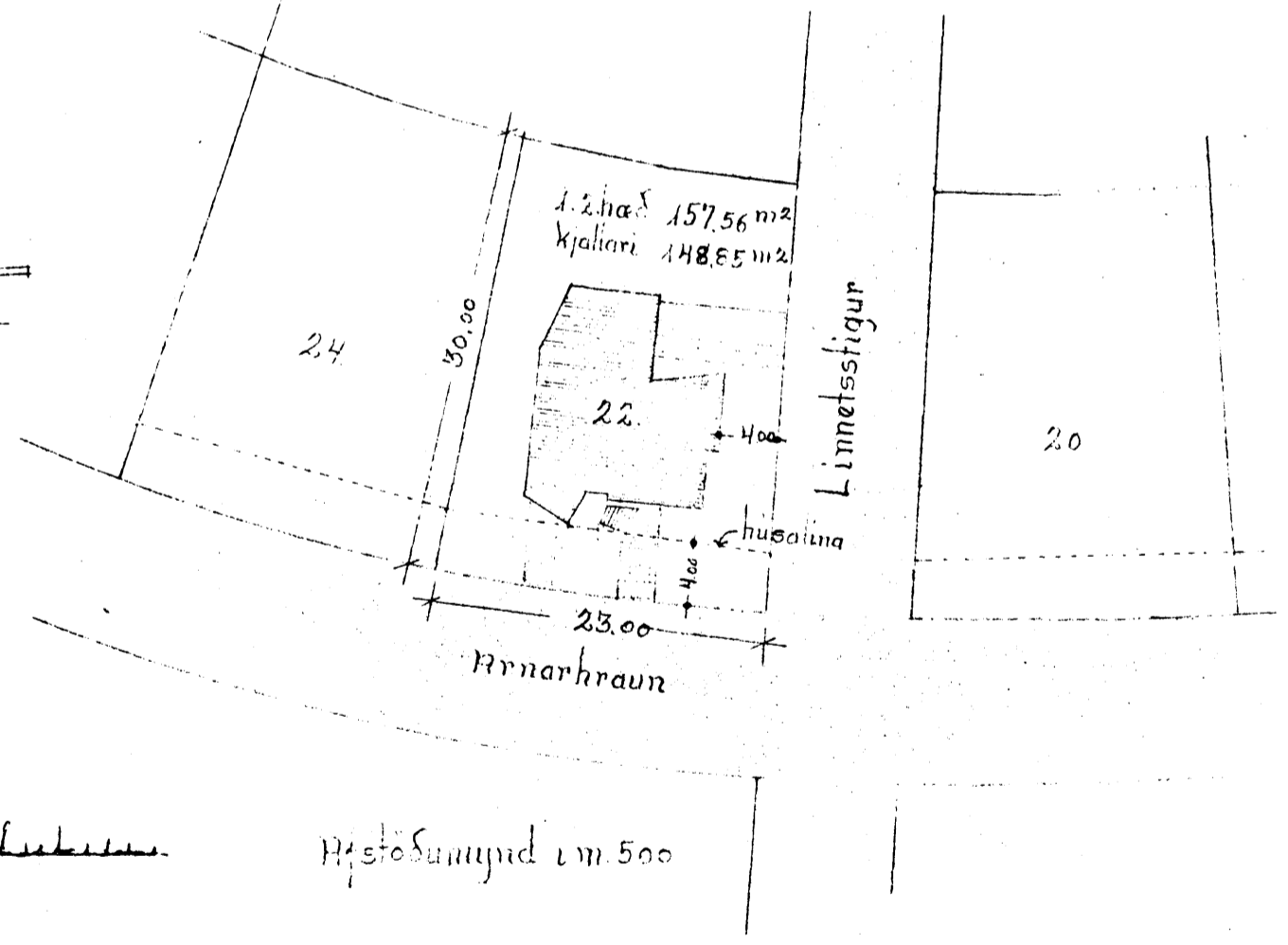
2. hæð



3. hæð



snæðing



Afstöðumynd í m 500

Reykjavík í desamb '59
Óskar Sveinsson