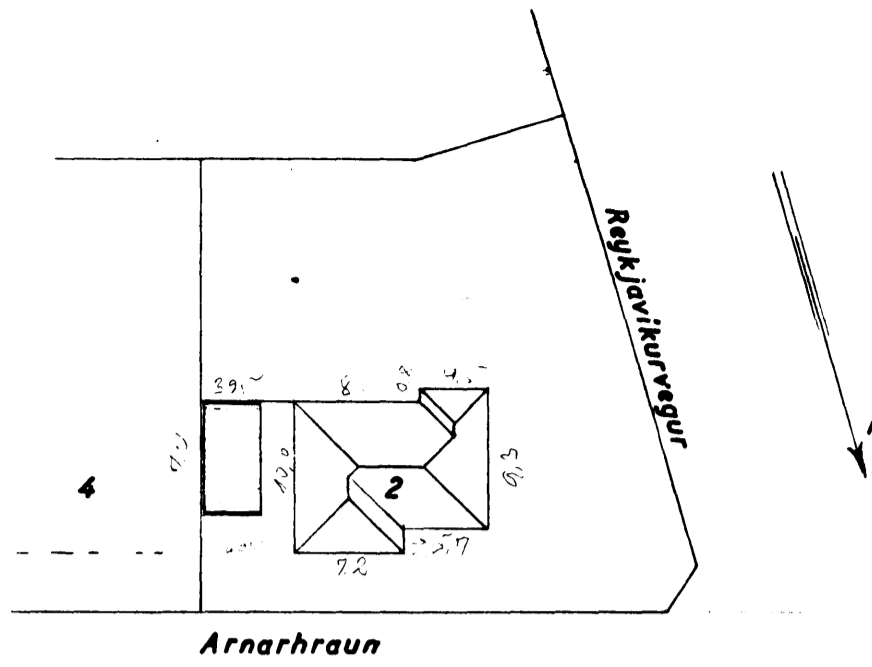


Eig:
 Sólveig Baldvinsdóttir og
 Erna S. Kristinsdóttir
 Arnarhraun nr. 2

Bilgeymsla
 1:100

AFSTÖÐUMYND

1:500



HÚSAMÍÐAMEISTARI:

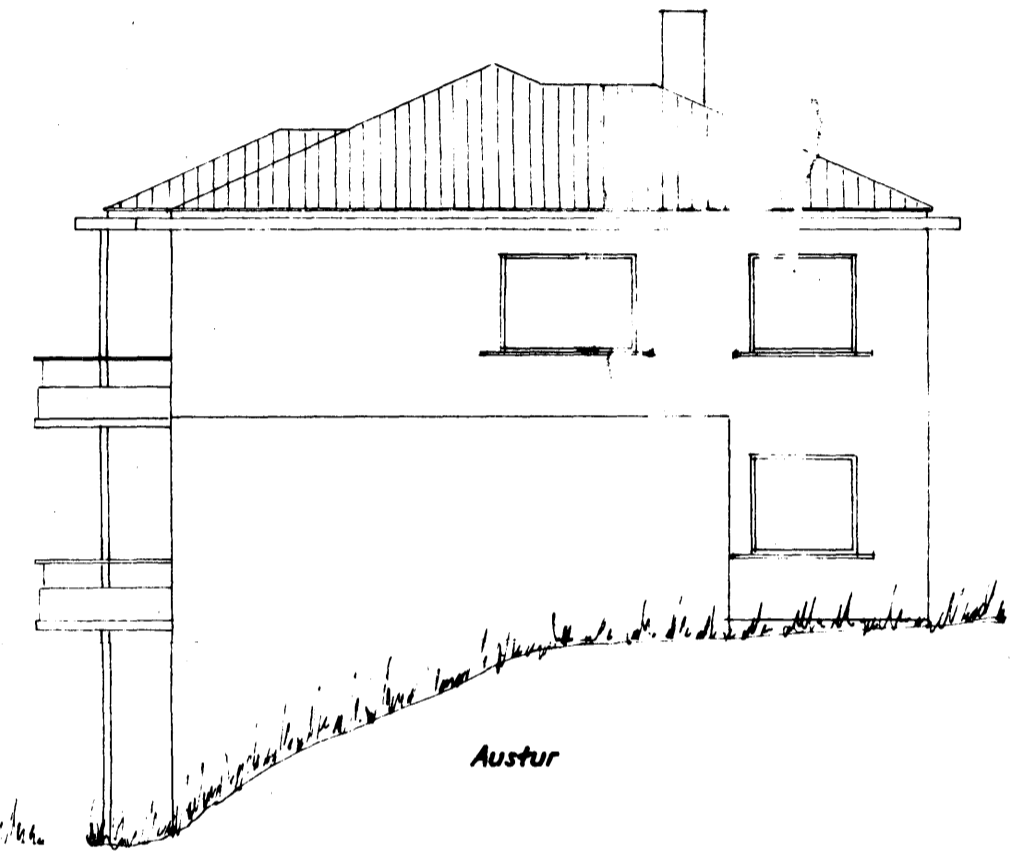
MURARAMEISTARI:



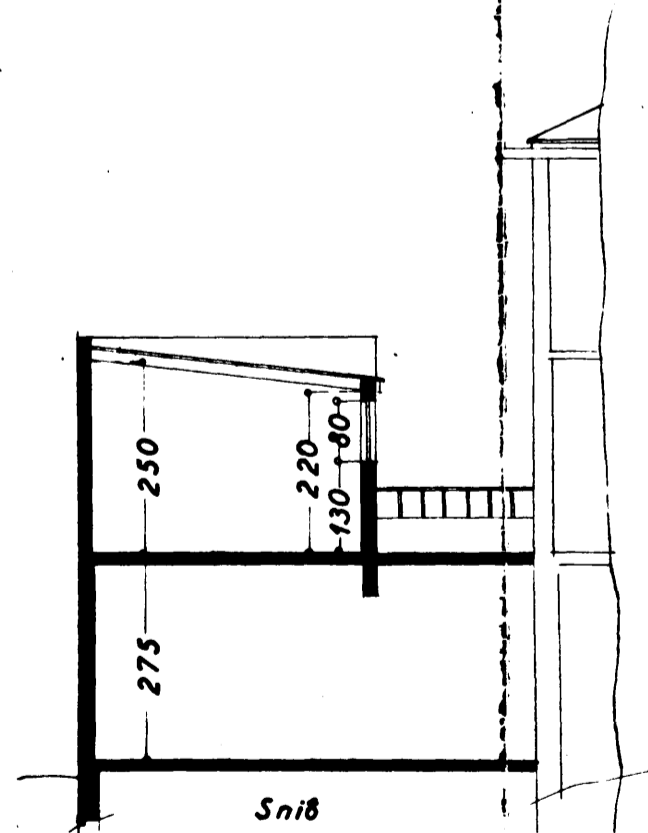
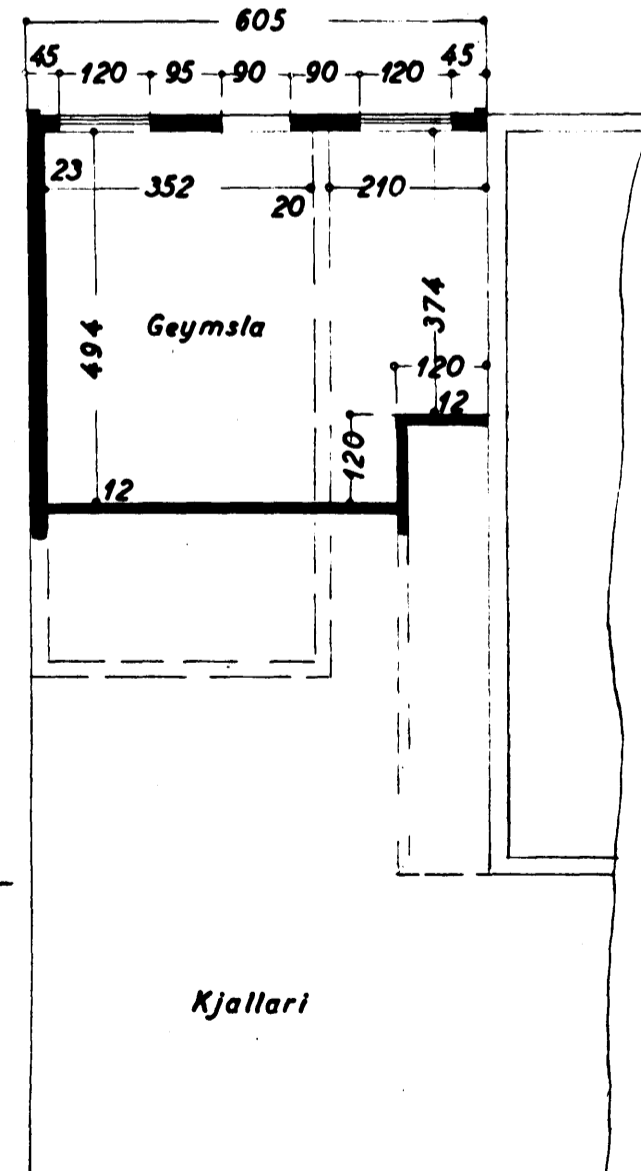
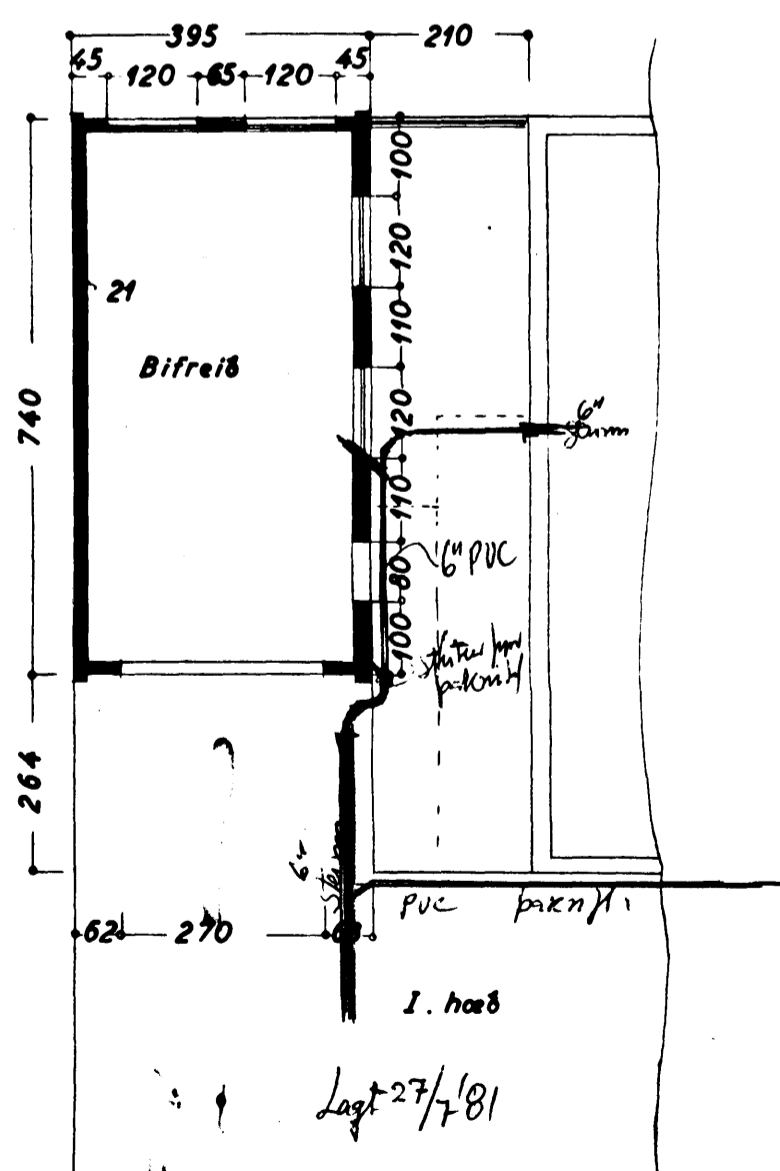
Norður



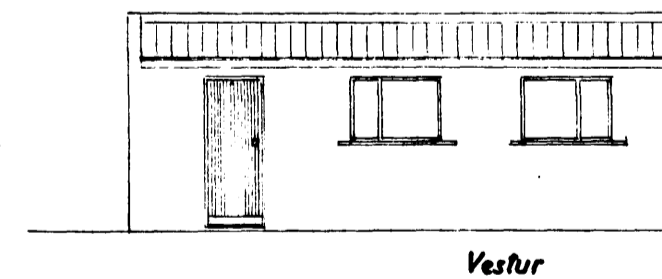
Suður



Austur



Snið



Vestur

ARNARHRAUN

Stofnarfærði í ágúst '58
 F. Sigurðsson