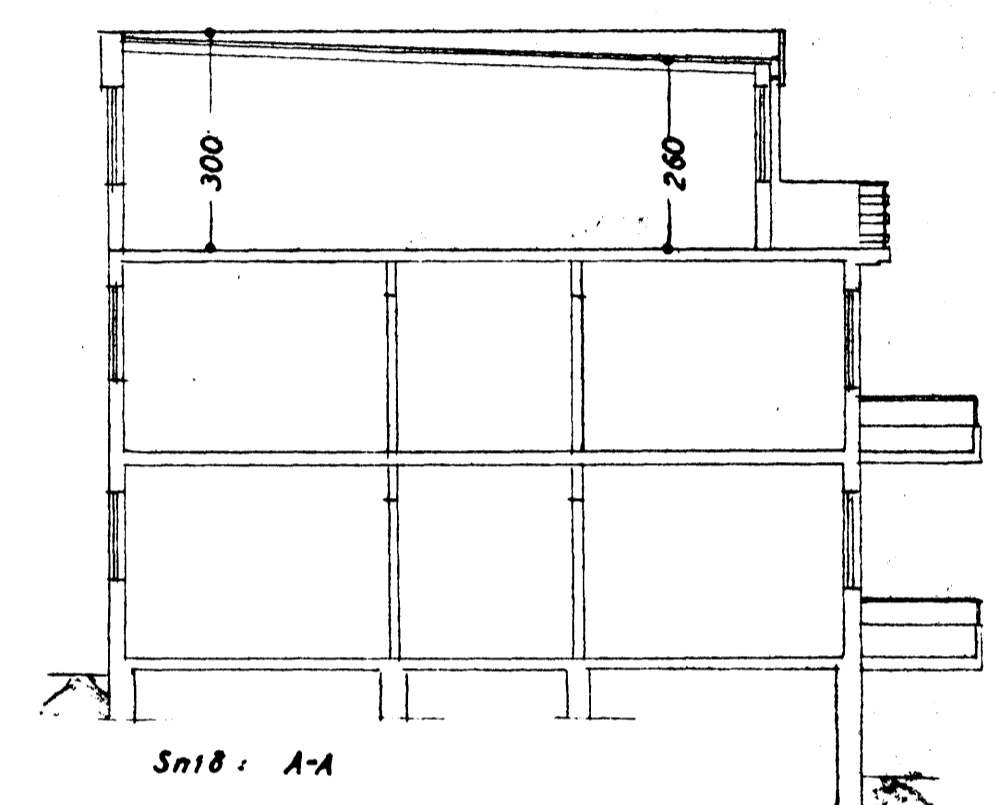
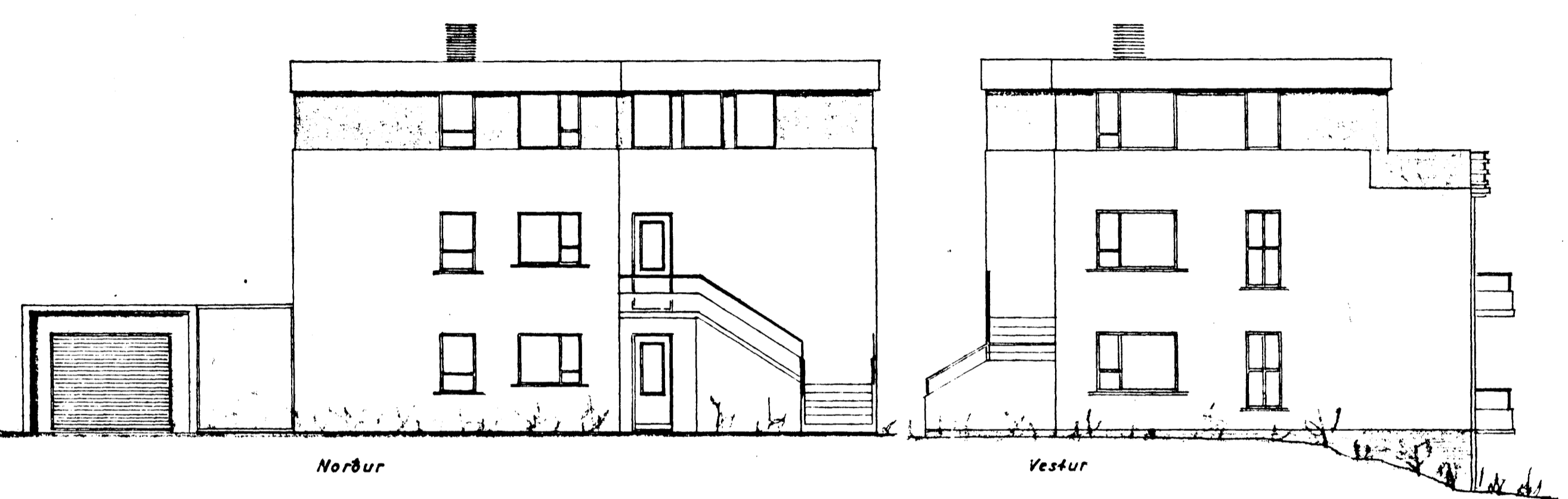
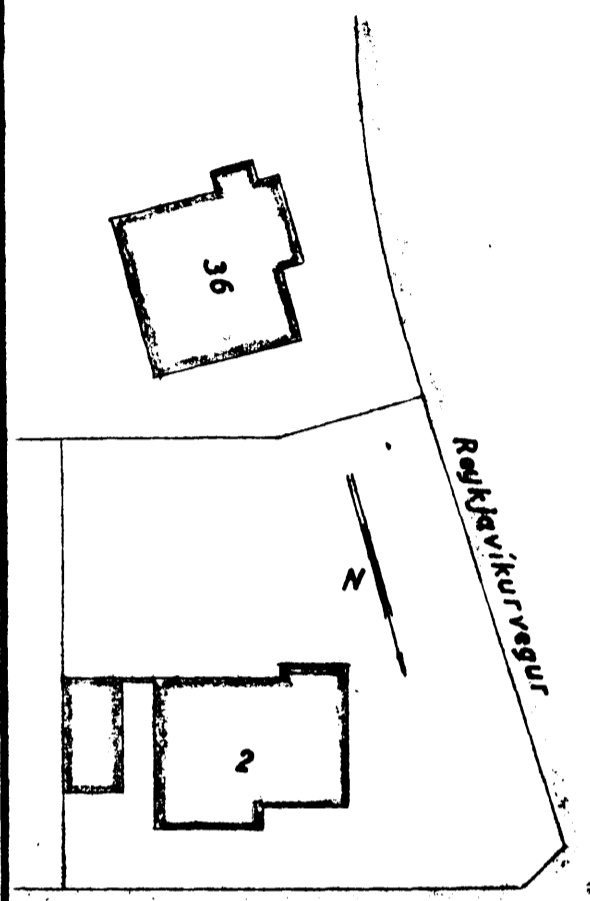
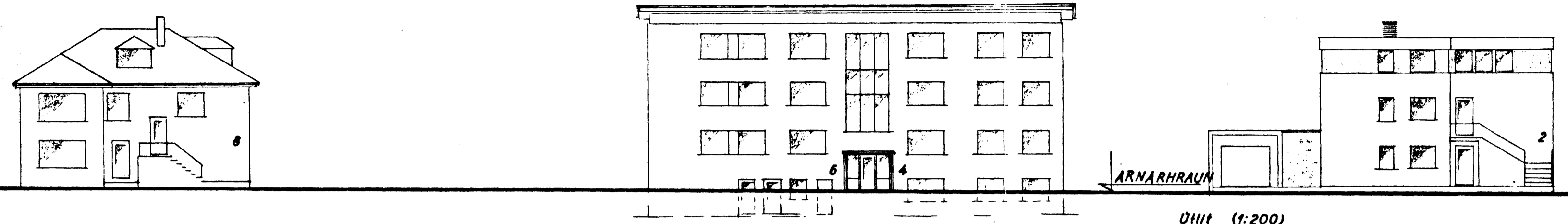
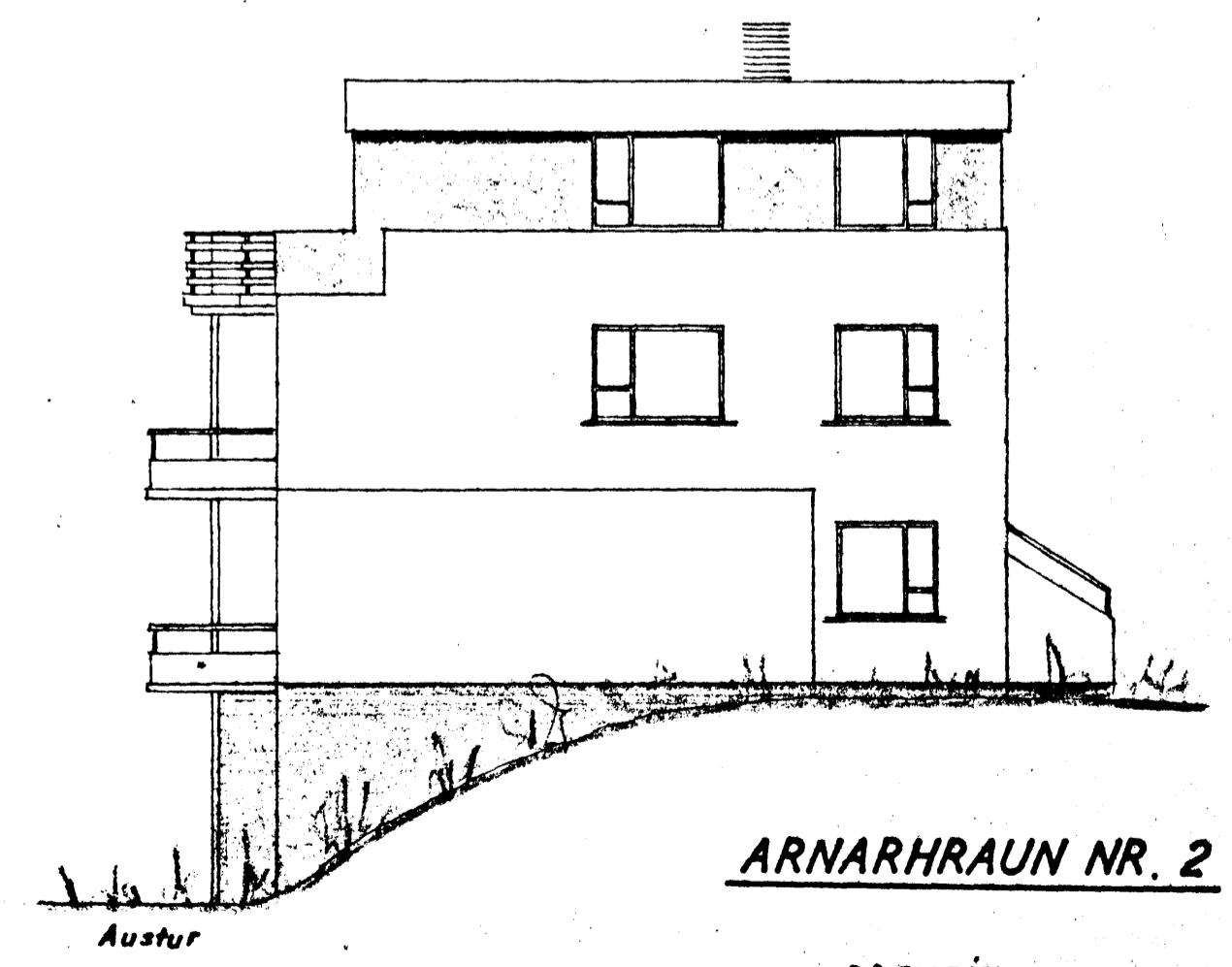
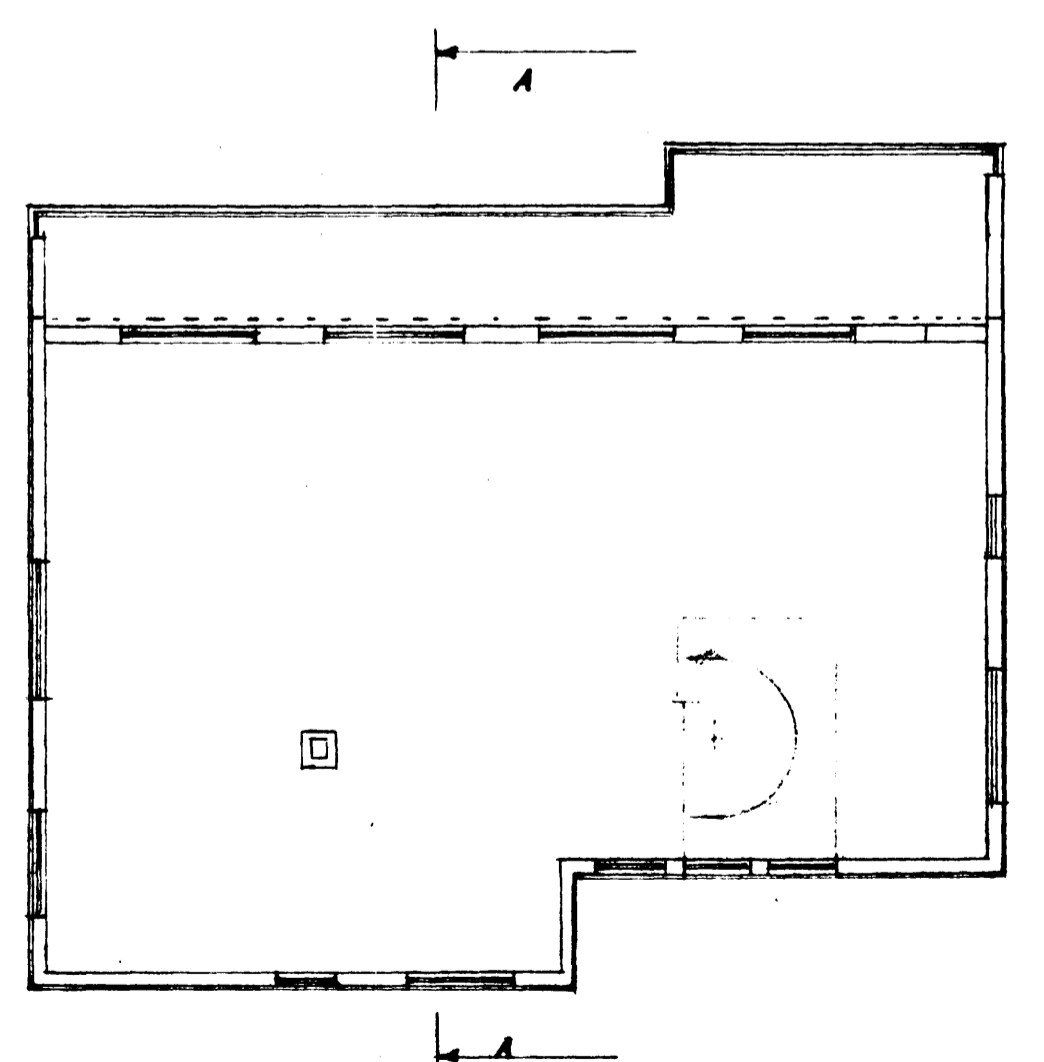


Tilloga Samþ 18/5 '66  
 Fullnaðar teikn. í  
 Skilaf.



Arnarhraun  
 Afstöðumynd  
 1:500



Grunnmynd  
 III. hæð

103m x  
 280m

**ARNARHRAUN NR. 2**

BREYTING  
 1:100  
 Halvarður Þ. & unni '66  
 Sigurðsson