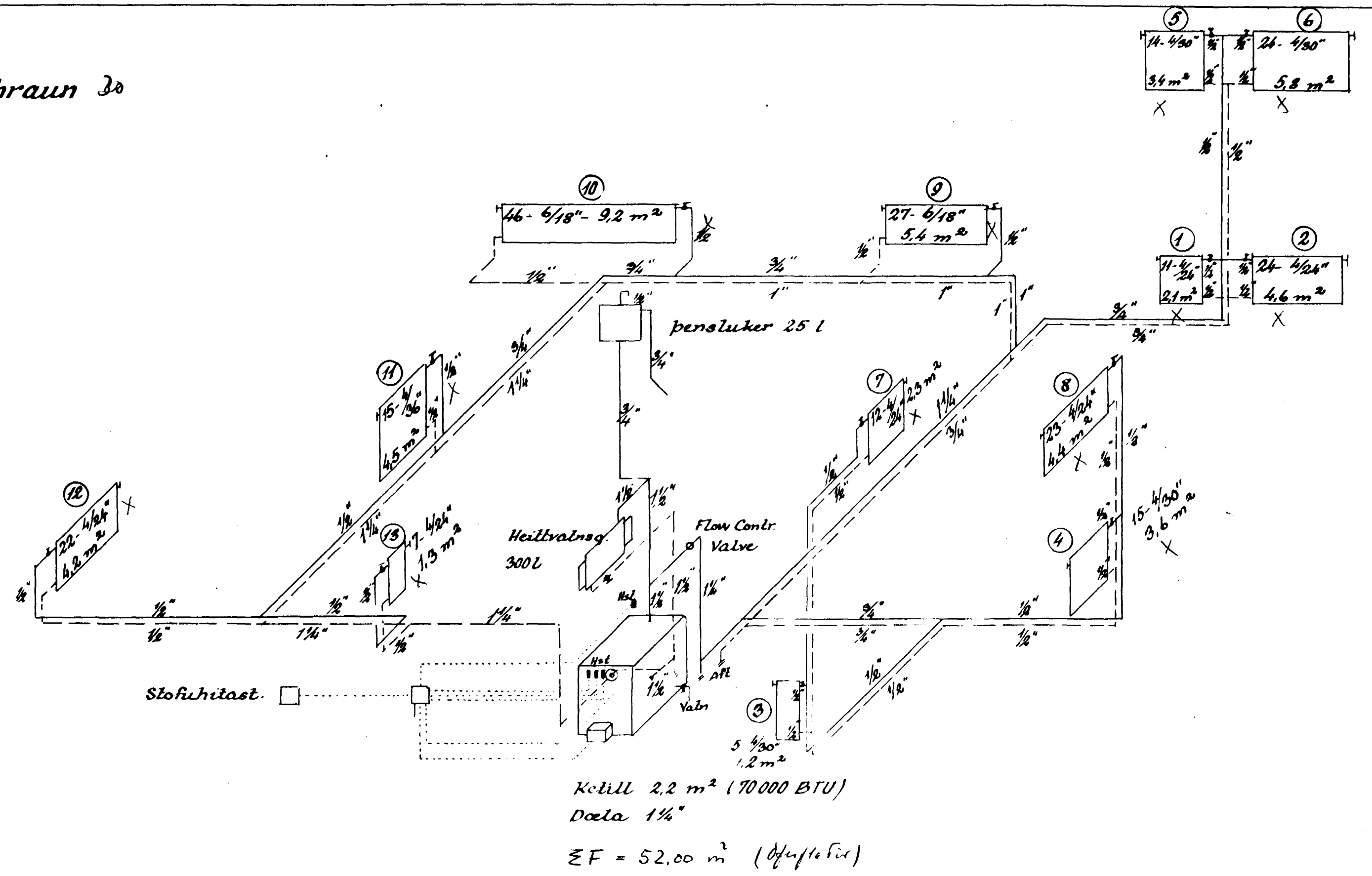
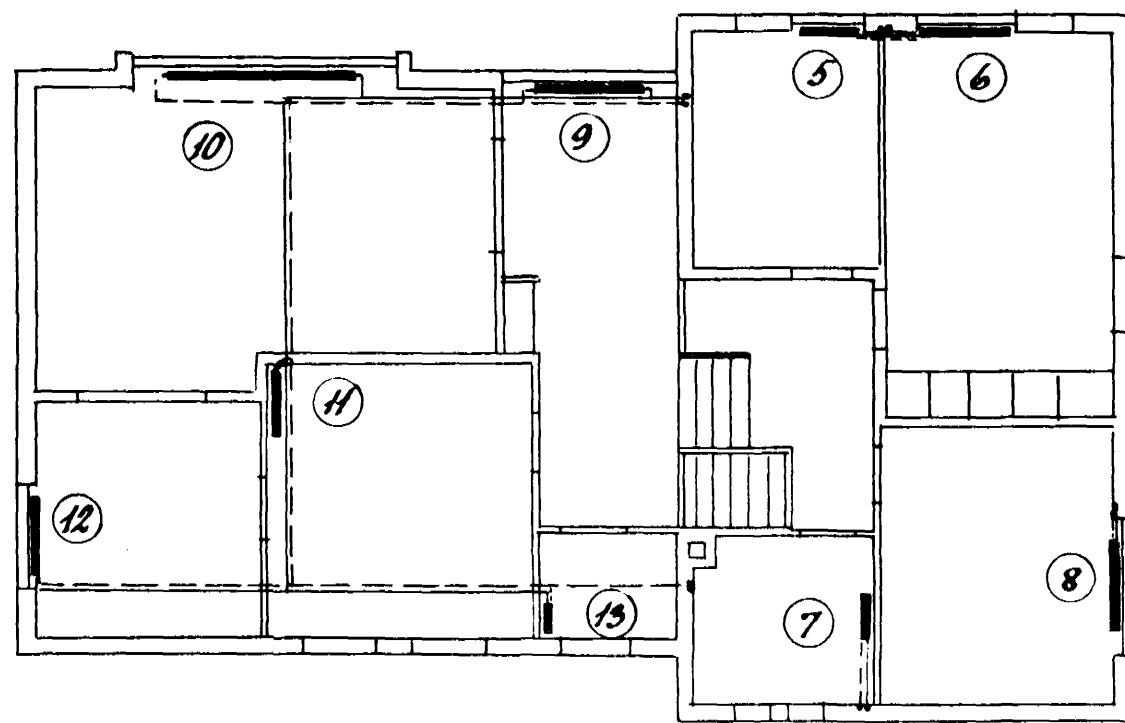


Hús Sigurðar Kr. Sigurðssonar við Arnarhraun 30

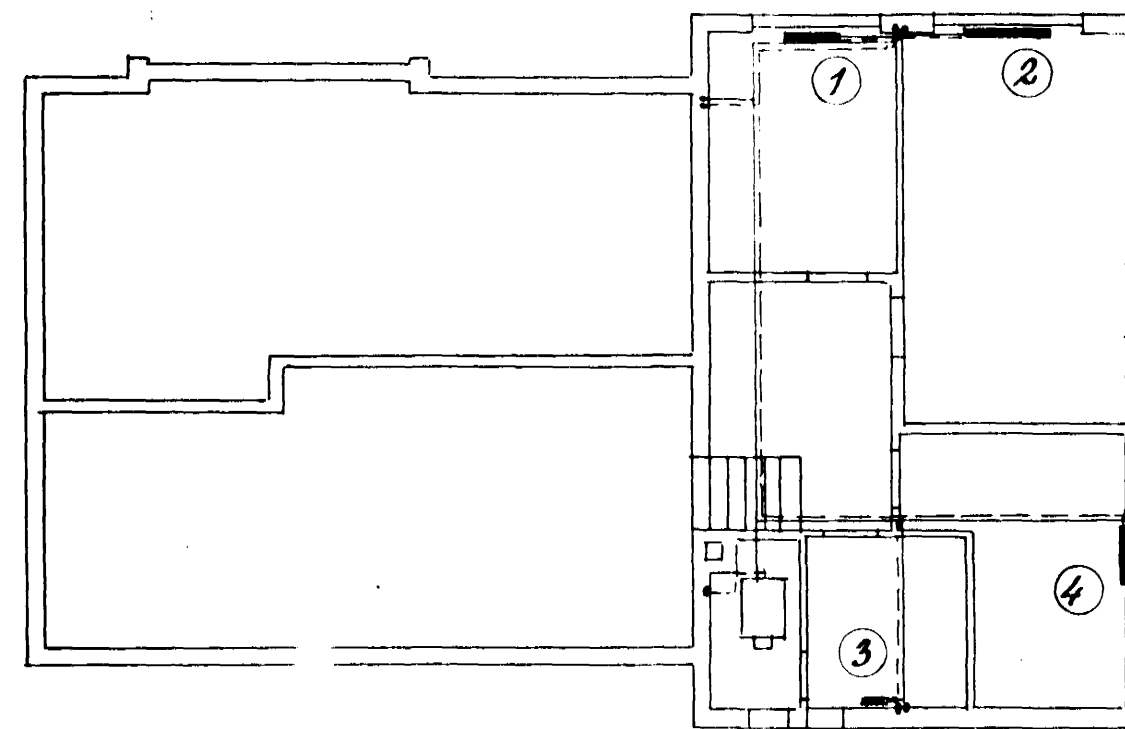
Miðslöðvarkerfi



Gólfplömur = $8.80 \times 7.80 = 68.76$
 $6.00 \times 9.40 = 56.40$
 $\frac{68.76 + 56.40}{2} = 125.10 \text{ m}^2$



Hæðir



Kjallari

Hafnarf i des 57

Fig. 1. Ólafsson