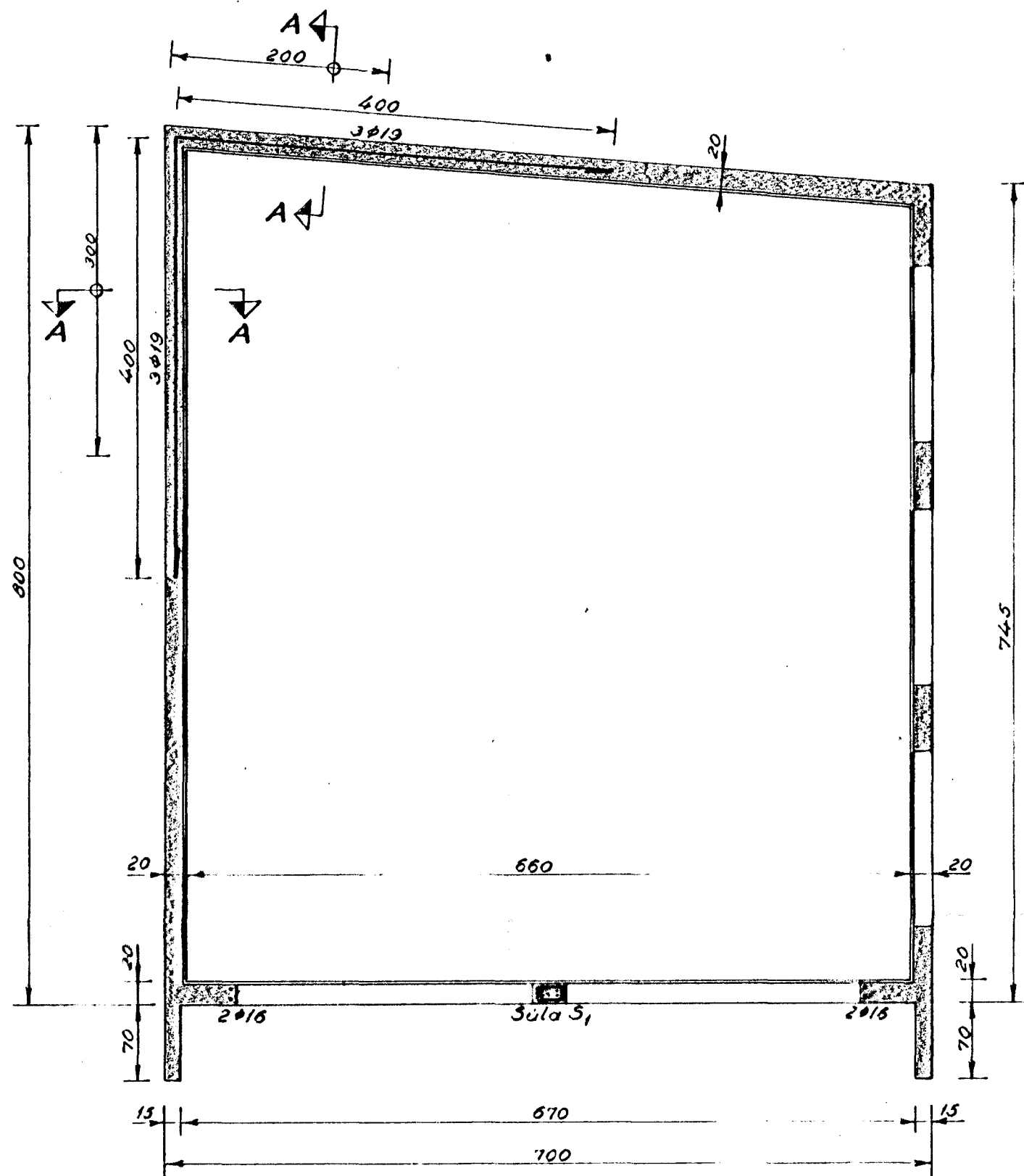
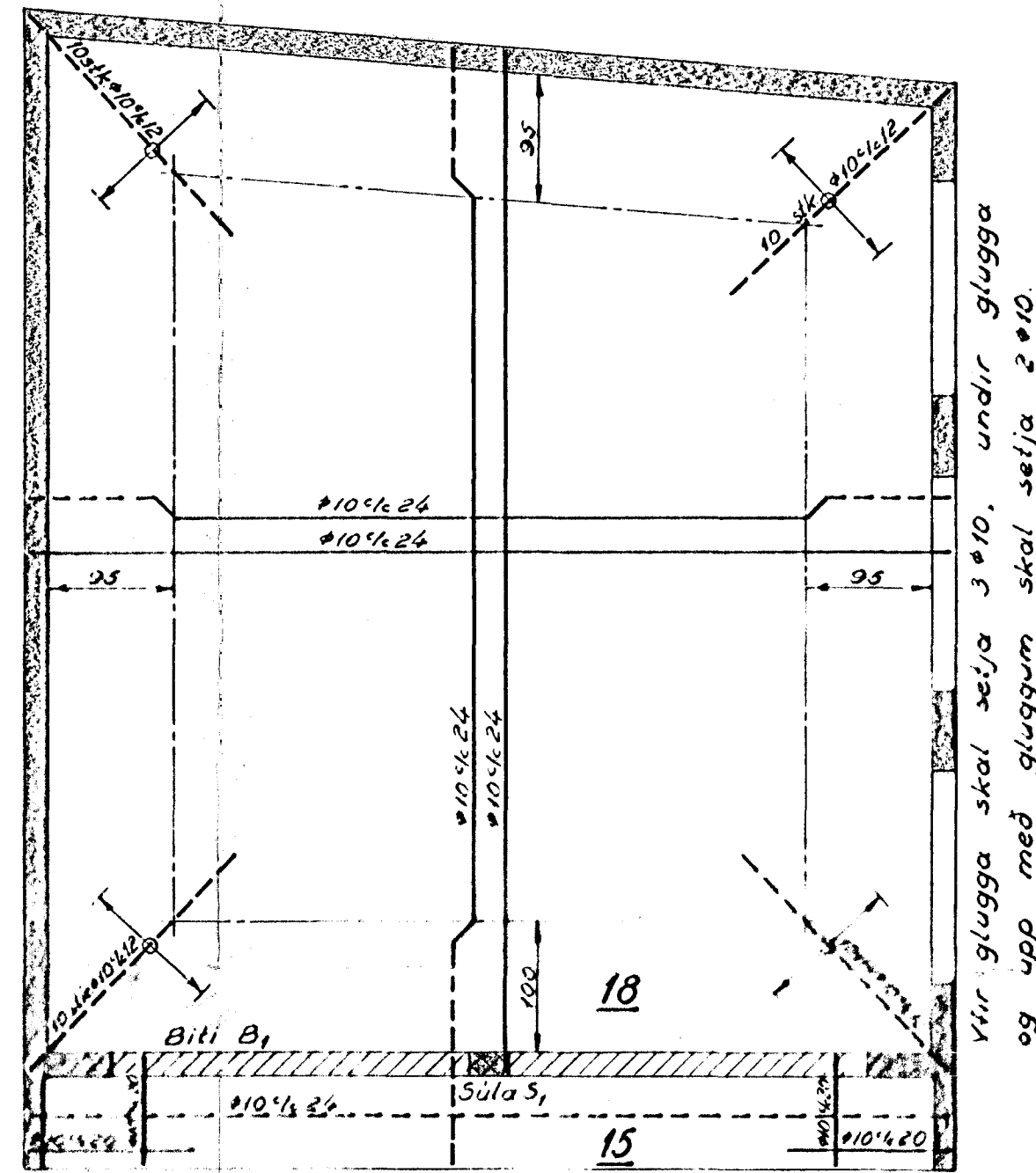


Undirstöður, 1:50.



Dakplata, 1:50.

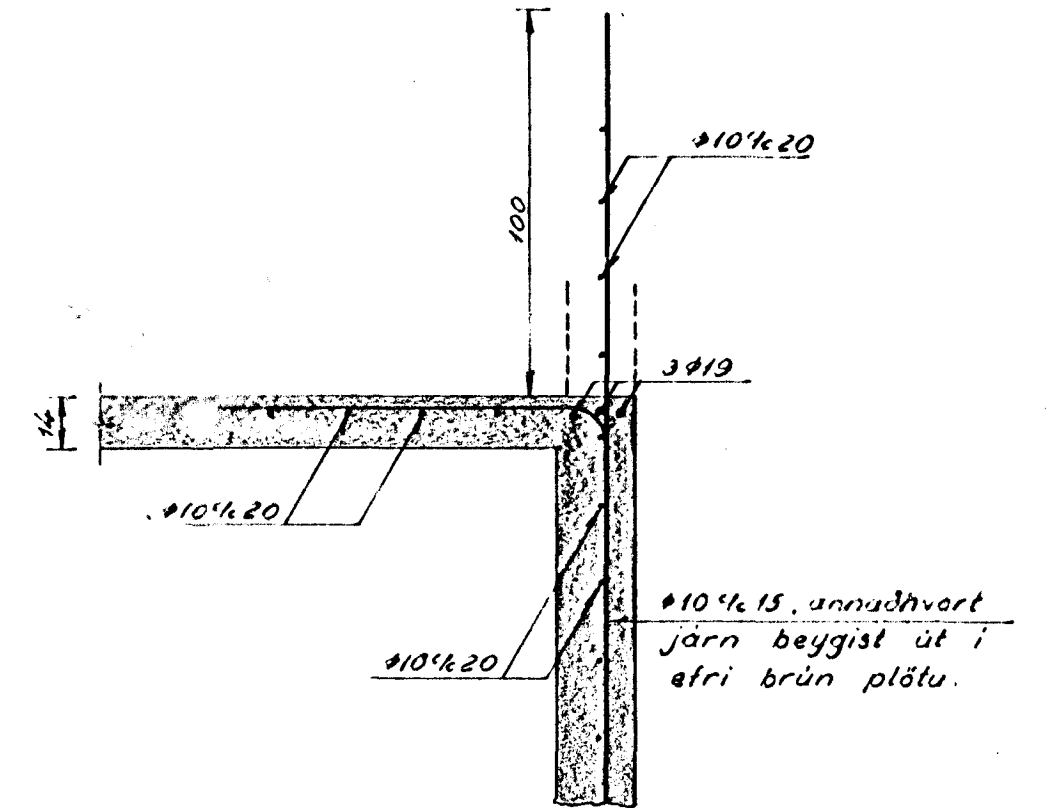


Skjarn i hornum skulu vera a.m.k. 300 cm. löng, þau skulu beygd 75 cm. niður í ytri brún veggja.

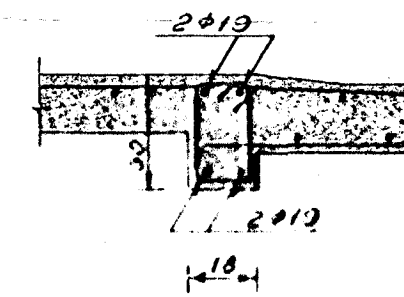
3/9 '64

Byggingarfræðingur
í Hafnarfirði

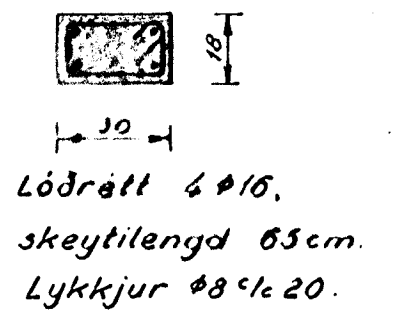
Snið A-A, 1:20.



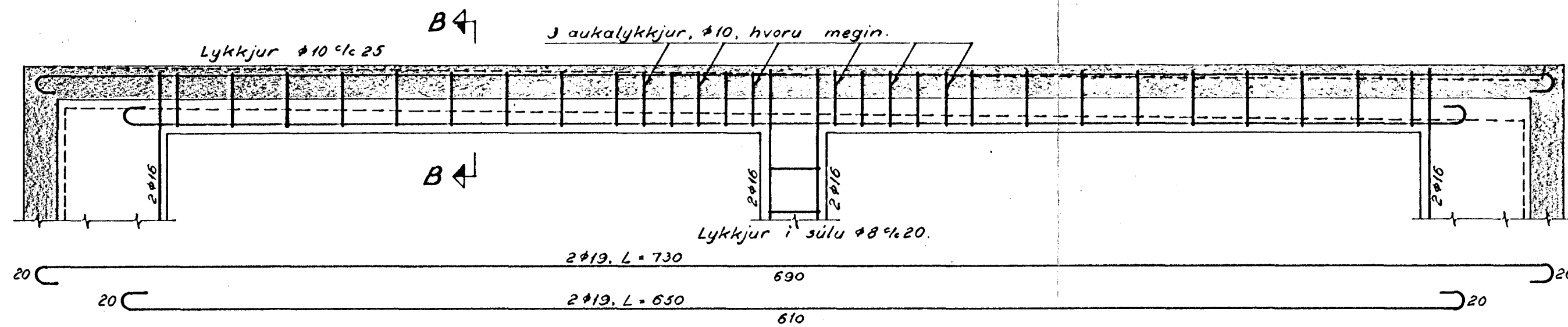
Snið B-B, 1:20.



Snið í súlu S₁, 1:20.



Biti B₁, 1:20.



Arnarhraun nr. 31,
Hafnarfirði.
Bilskúr.

Gunnar Baldvinsson, verkfræðingur

M.: 1:50 og 1:20

Dags: 26-8-'64

Uppdr.: G.B.

Nr.: 3001