

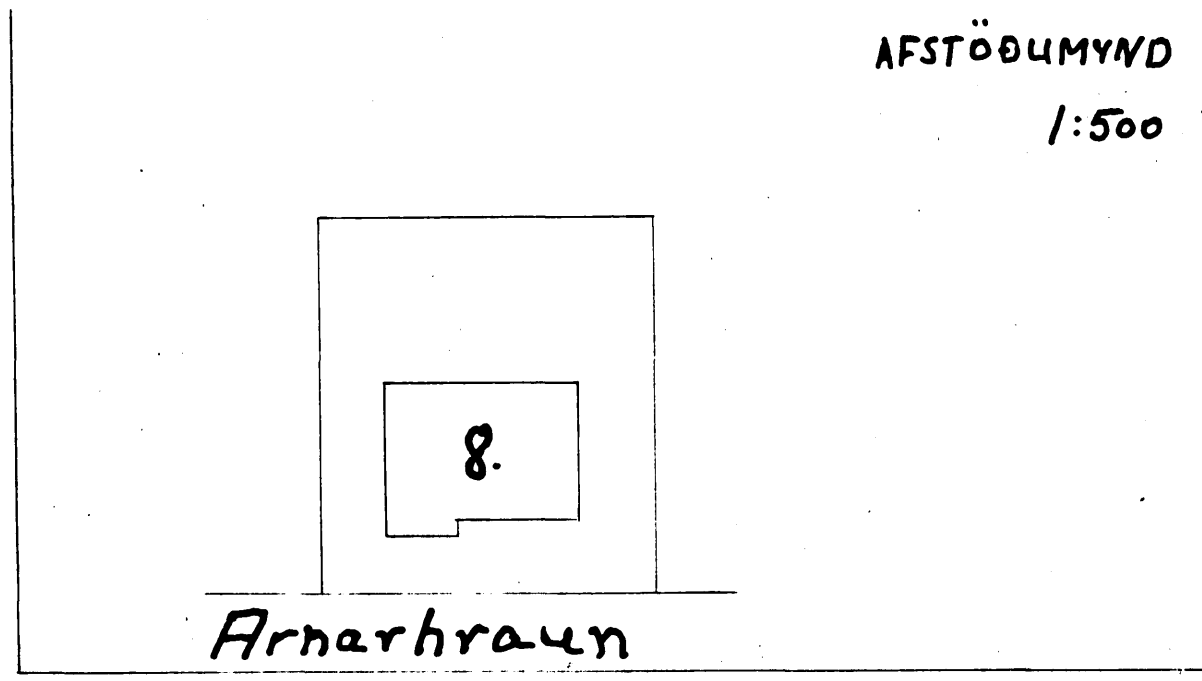
Hús við Arnarhraun nr. 8.  
 Eig: Guðjón Jónsson og Júlíus Sigurðsson.  
 1:100

AFSTÖÐUMYND  
 1:500

4/956

6/12 57 km/h

8/10 19/5-57



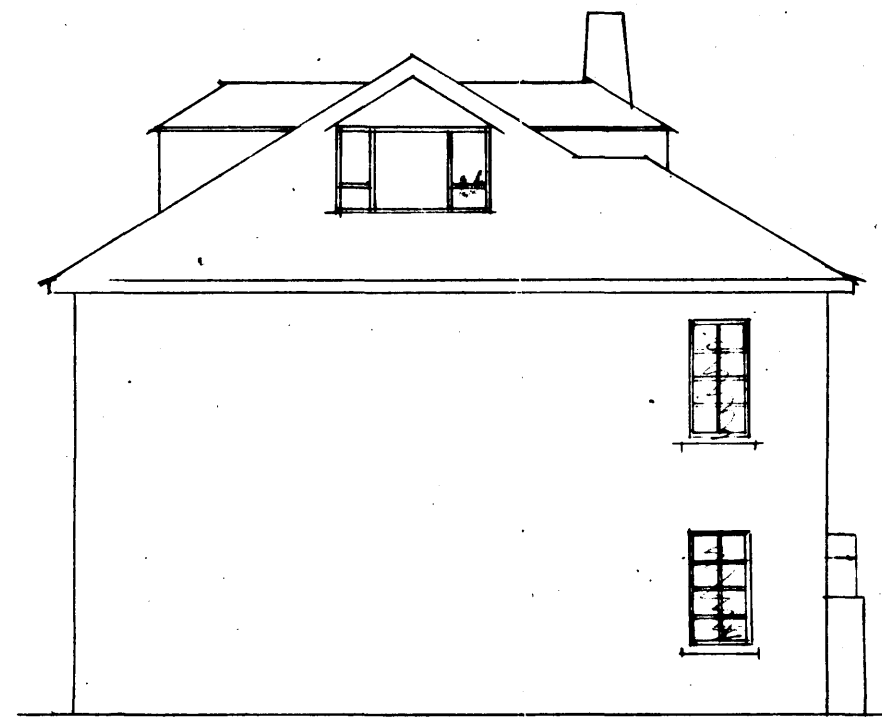
Norður



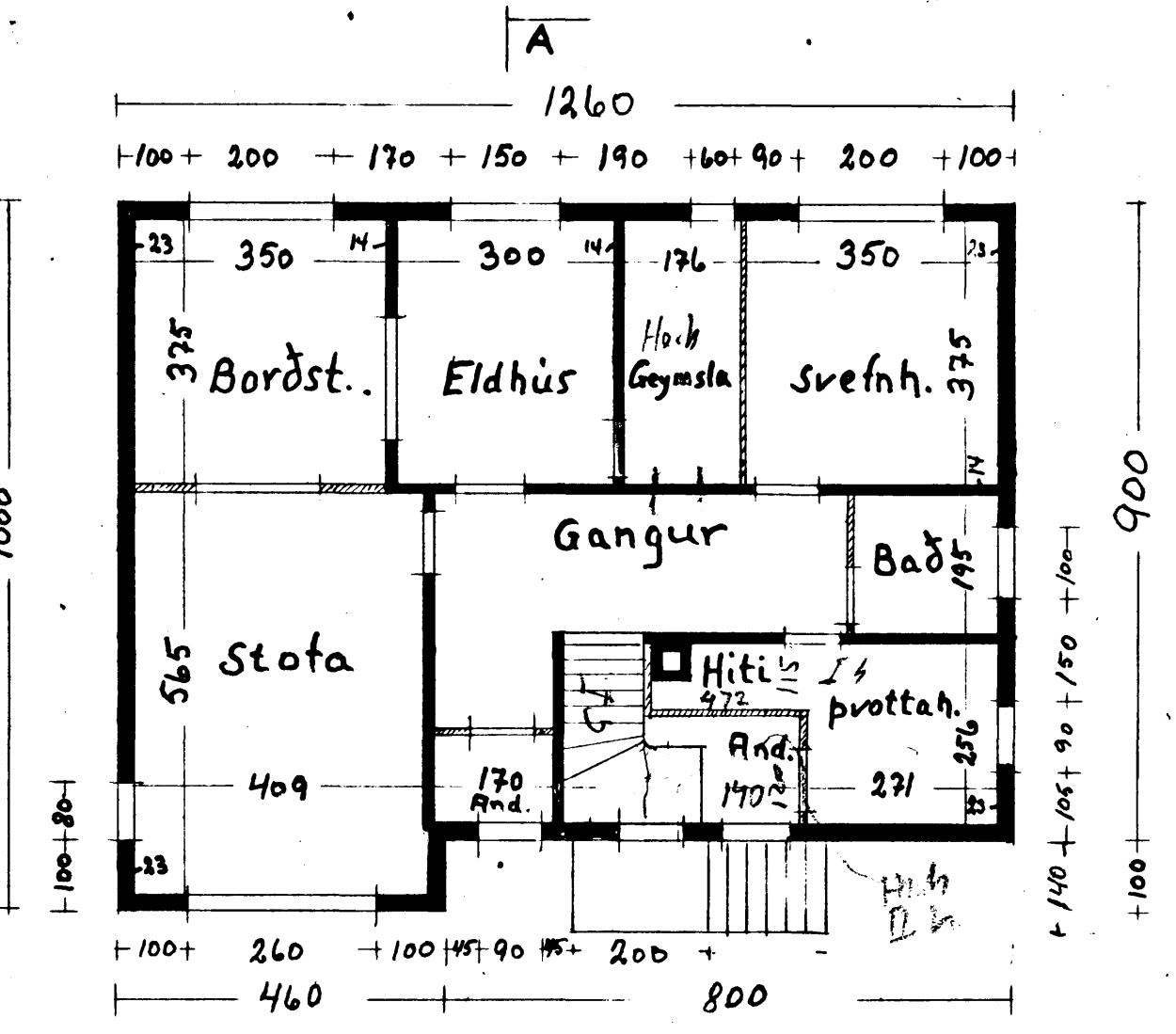
Suður



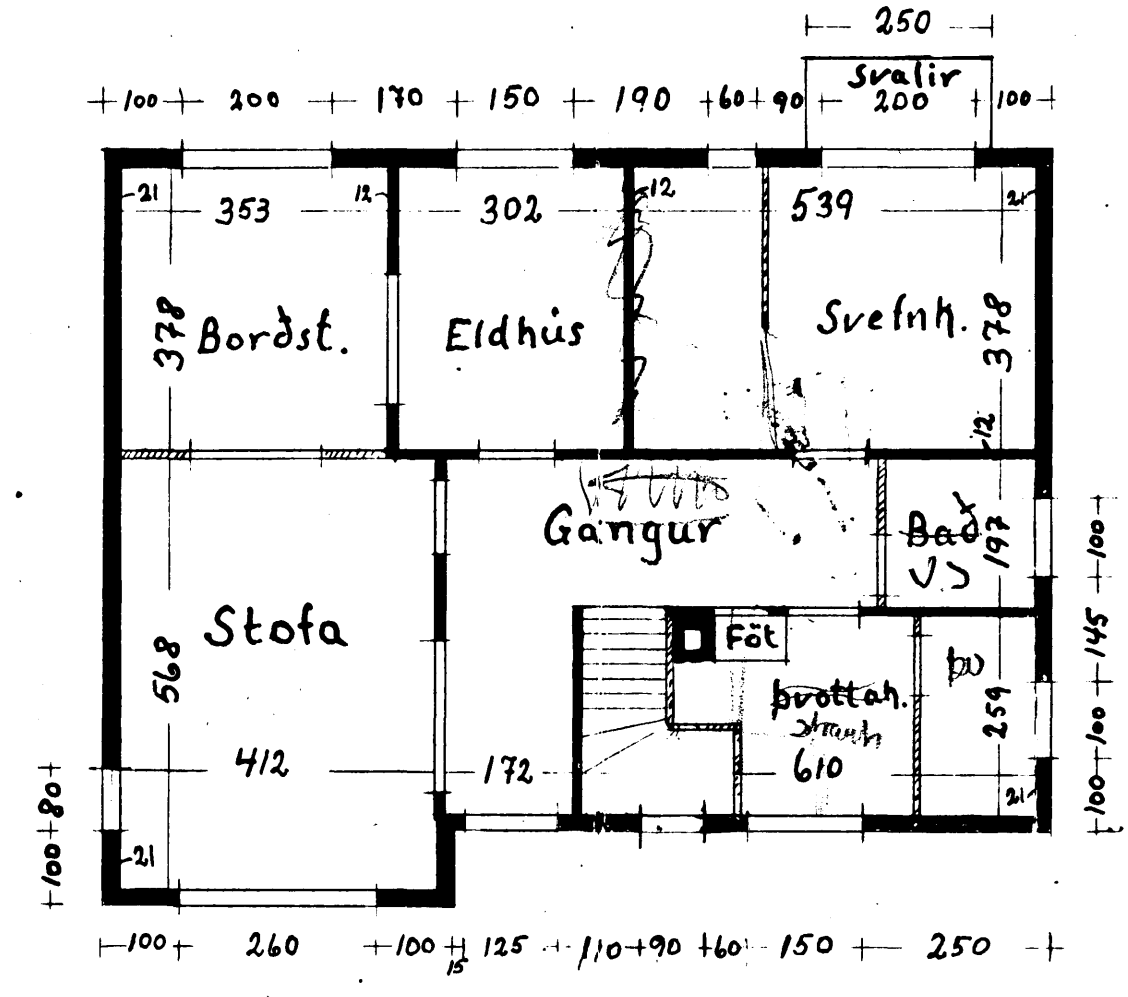
Vestur



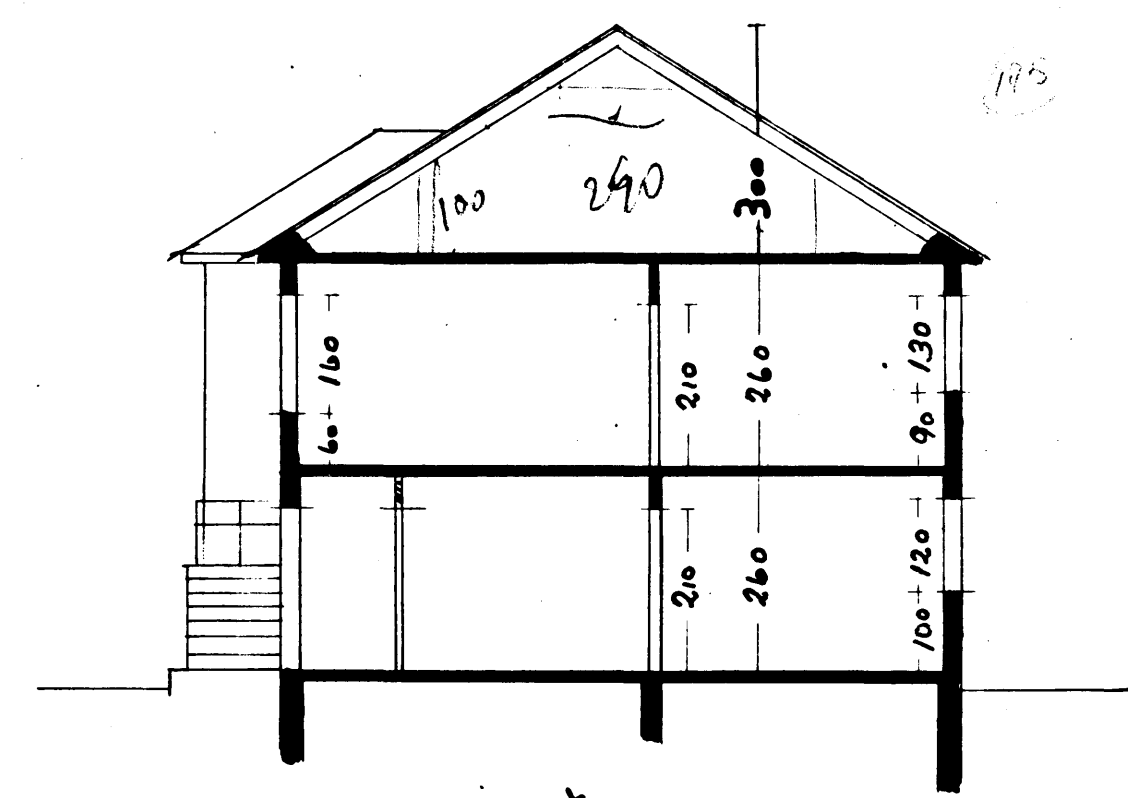
Austur



A 1. Hæð



2. Hæð



Skurður A-A

Hafnarfirði í ágúst 1956  
 Jón H. Johannesson.