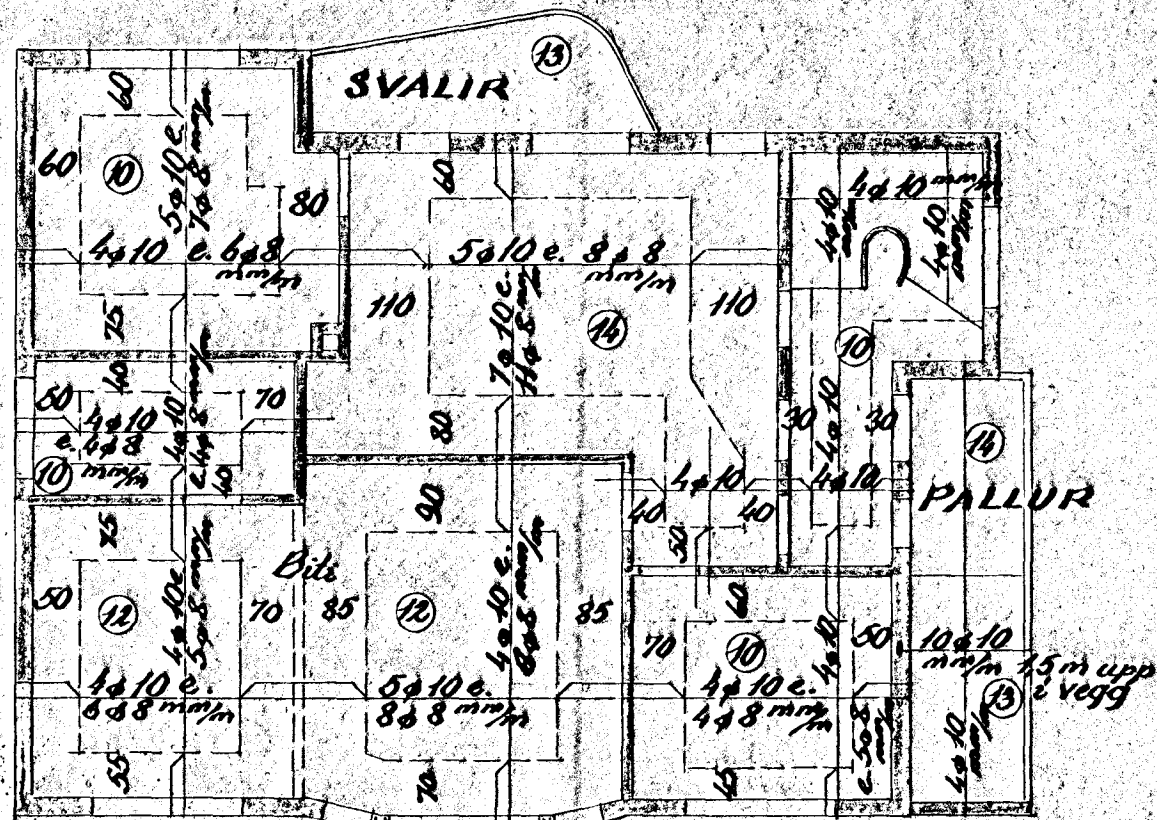
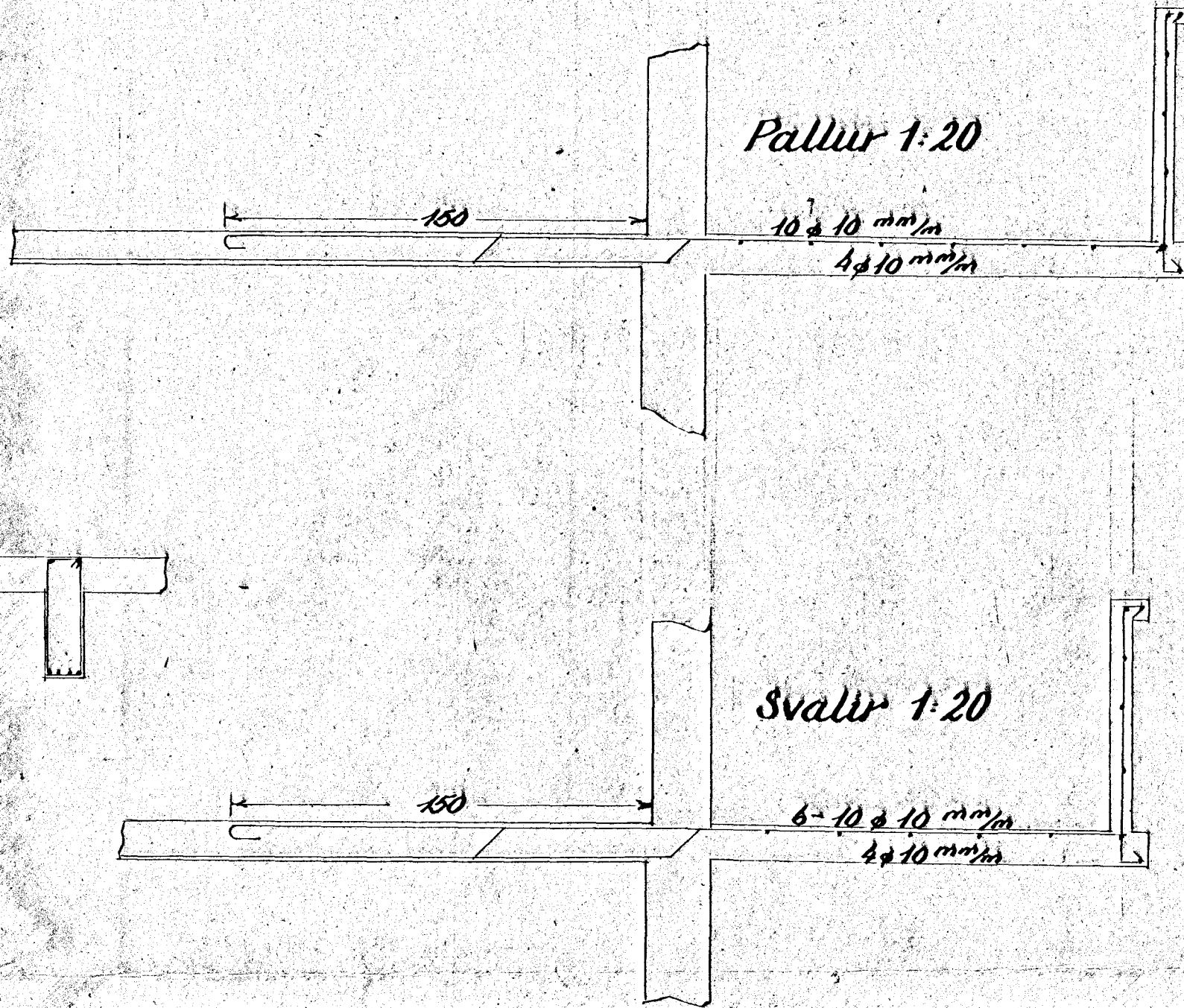
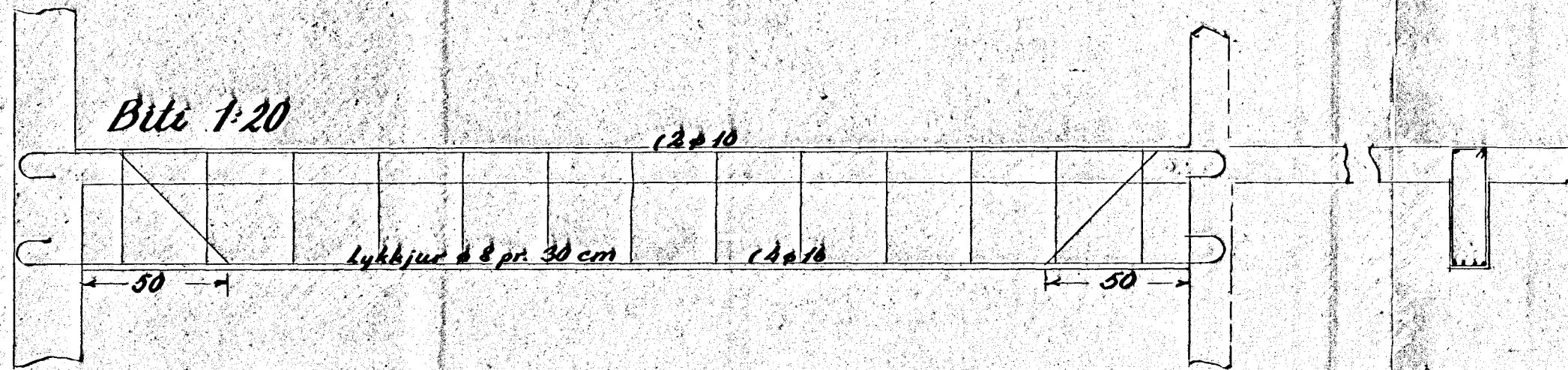
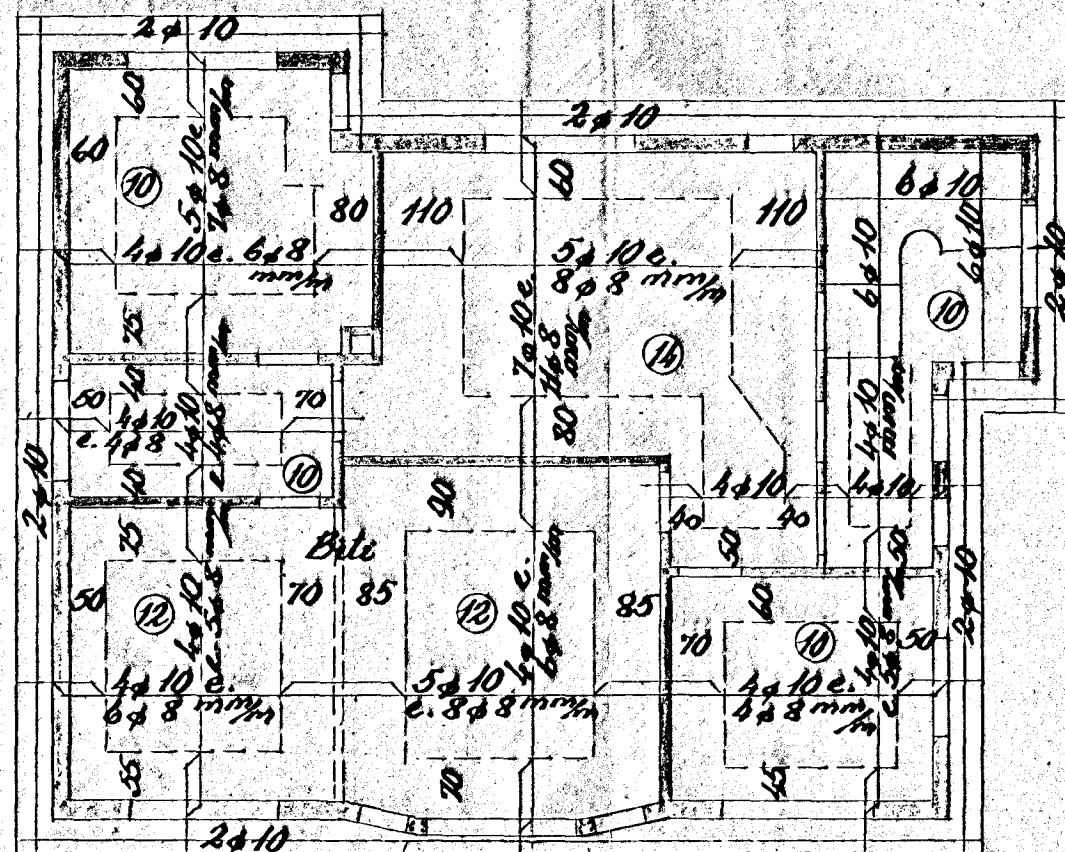


Hús Arna Gíslasonar við Ásbúðartröð nr. 9  
Járnbent steinsleypa



Loft yfir 1. hæð 1:100



Loft yfir 2. hæð 1:100

Blöndun sleypu 1:2:3  
Yfir dyr og glugga komi 2x10, nema haf ≥ 2,0  
m. þá komi 4x10

Hafnarf. 6 marz '54  
Sigrundur P. Ólafsson