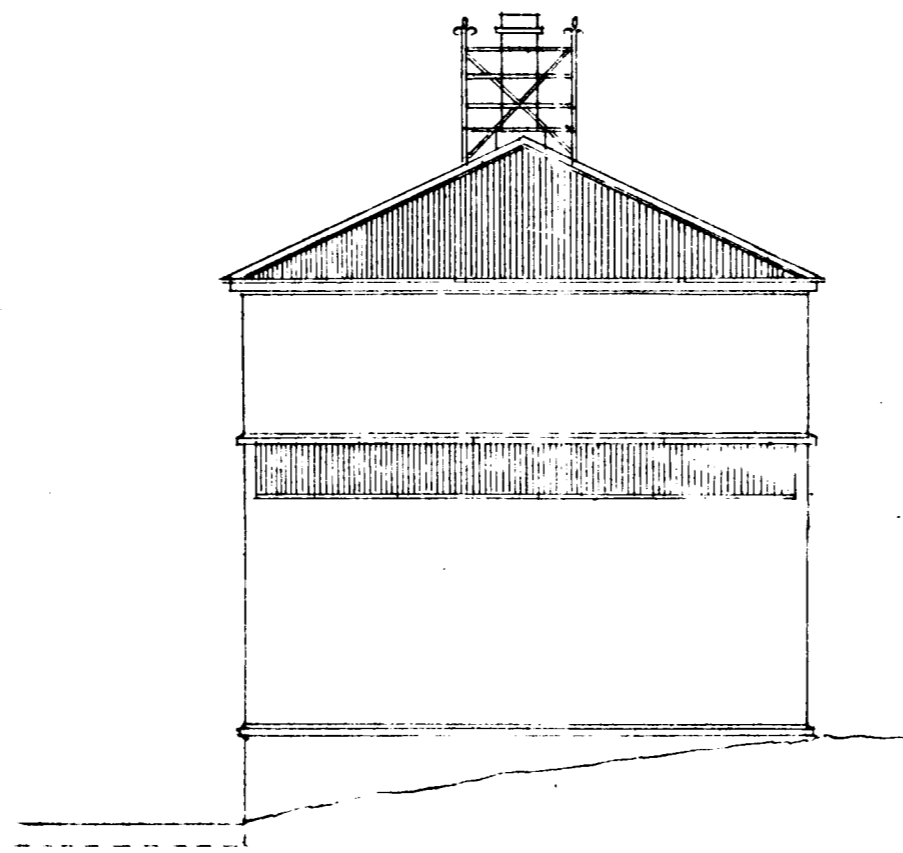
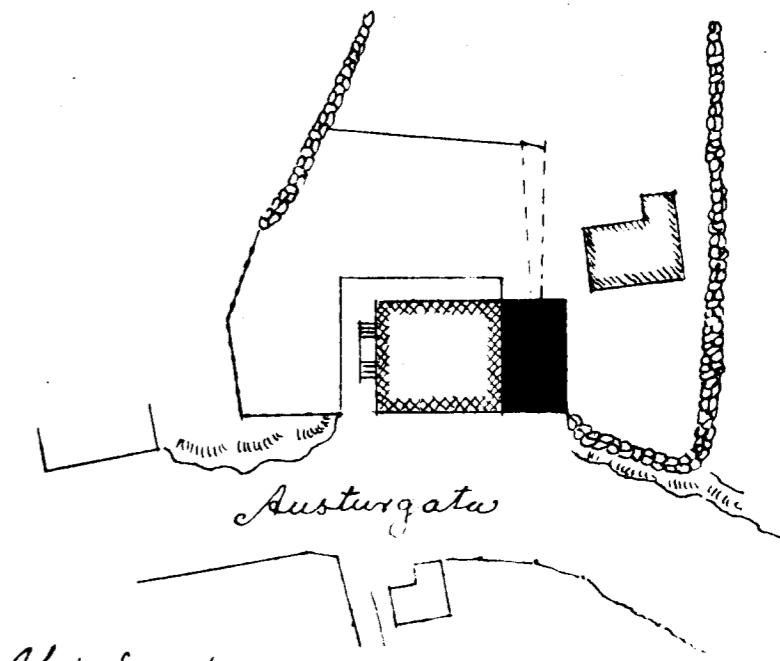


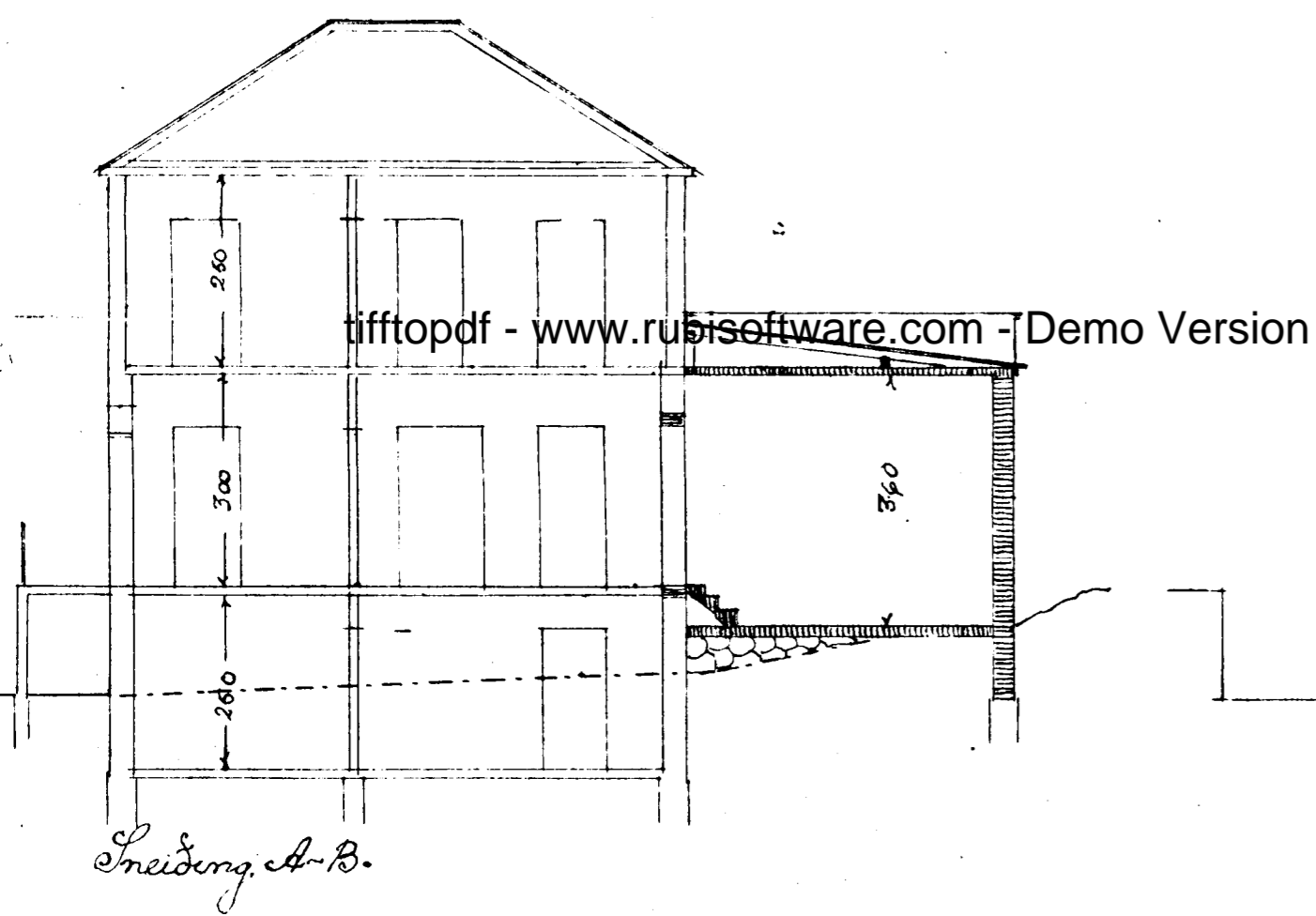
VIÐBYGGING VÍÐ LANDSSIMASTÖÐINA
 í Austurgötu 11.
 HAFNARFIRÐI.



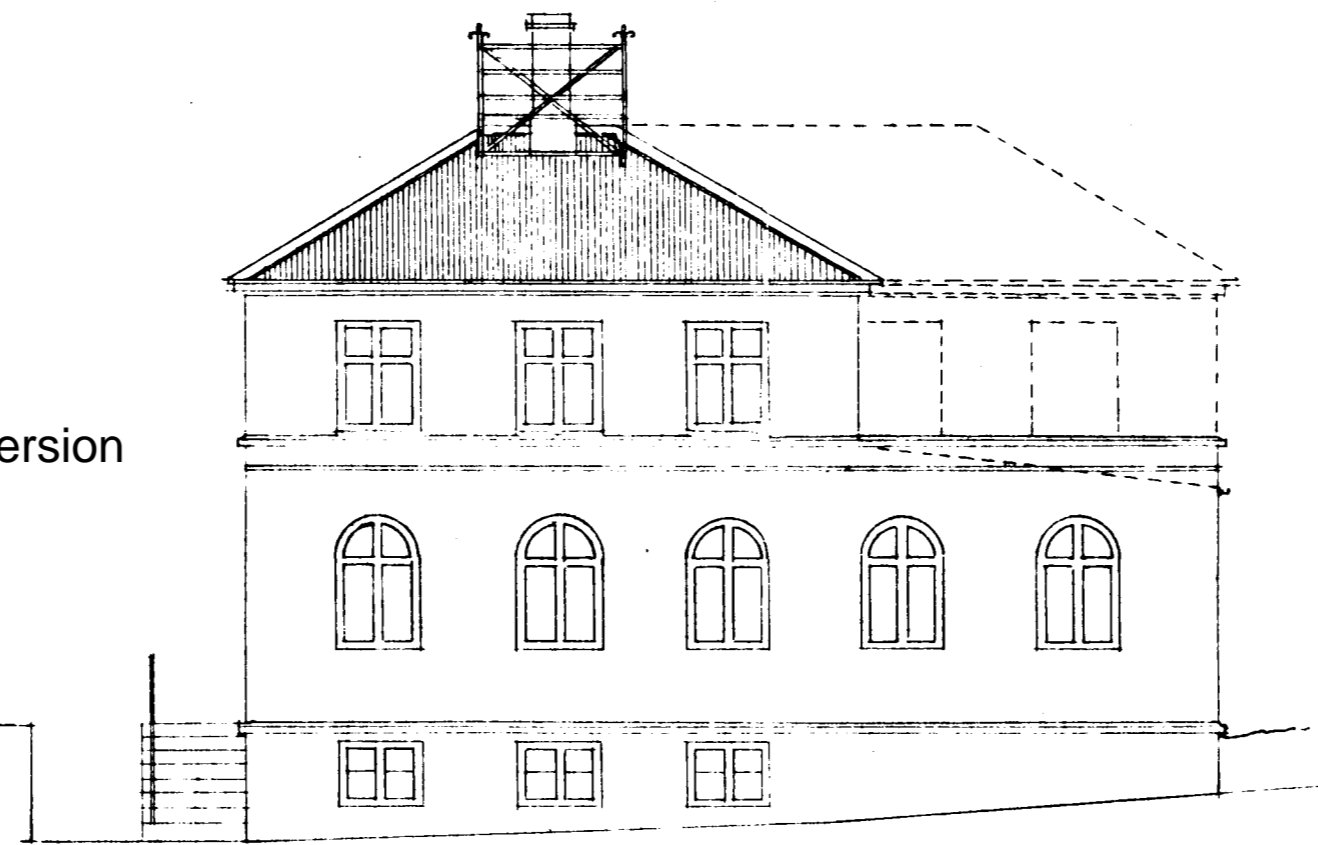
Tak



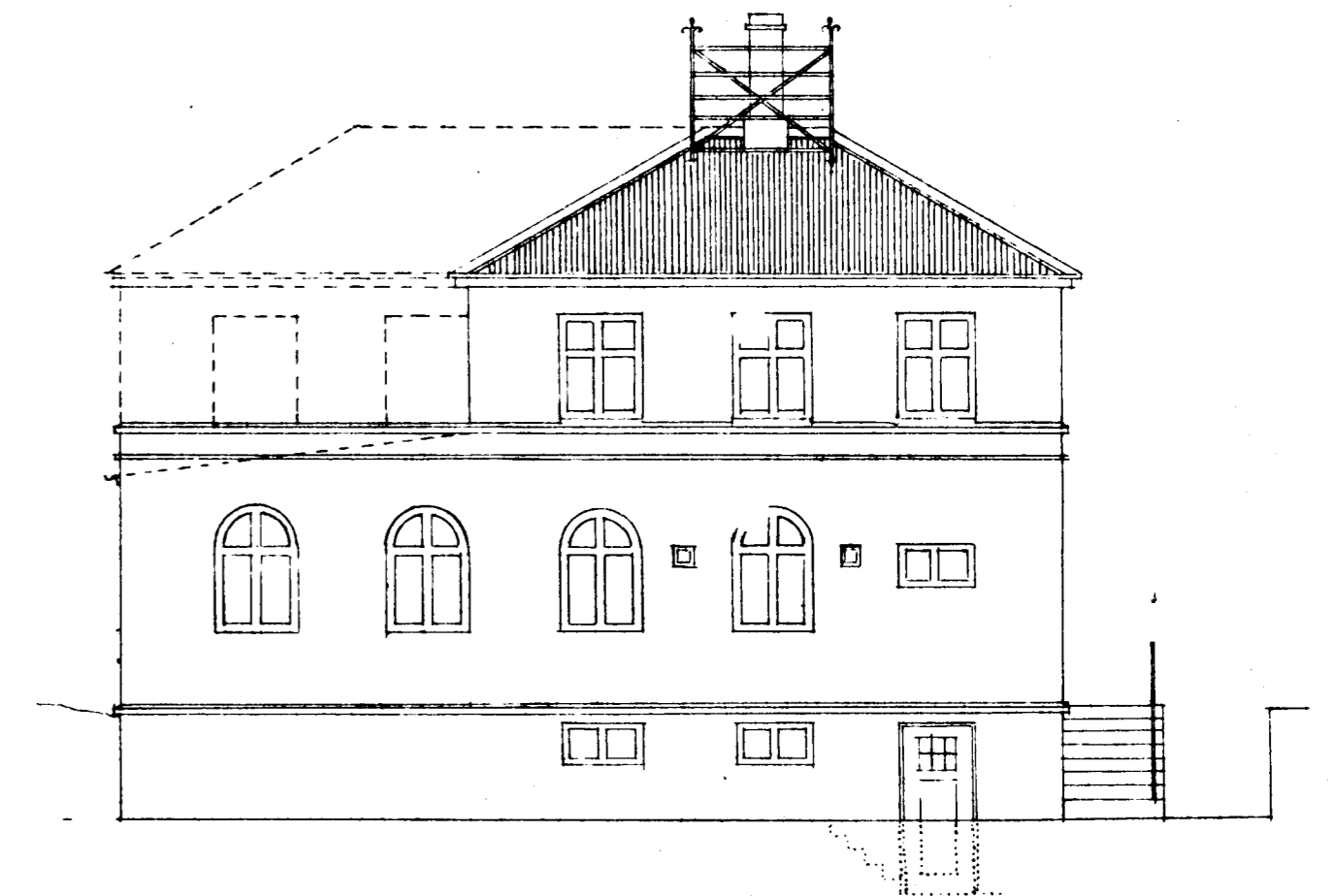
Afstæða 1:500



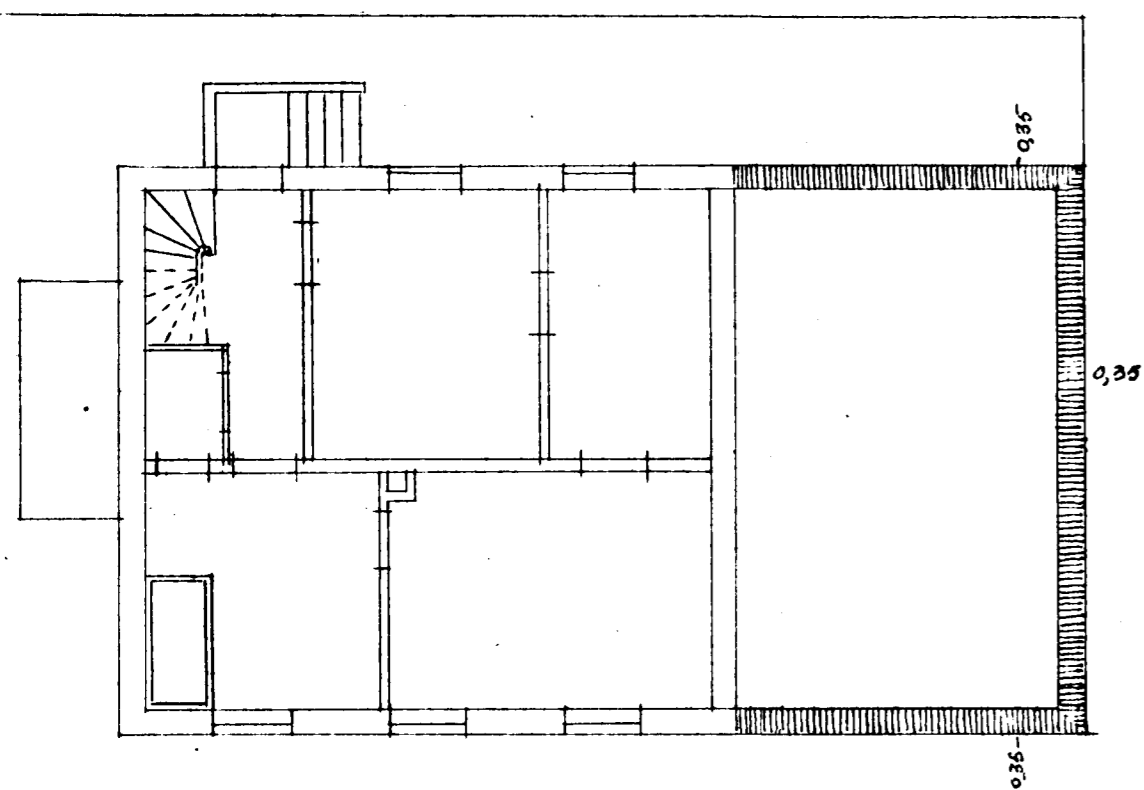
Snælding A-B.



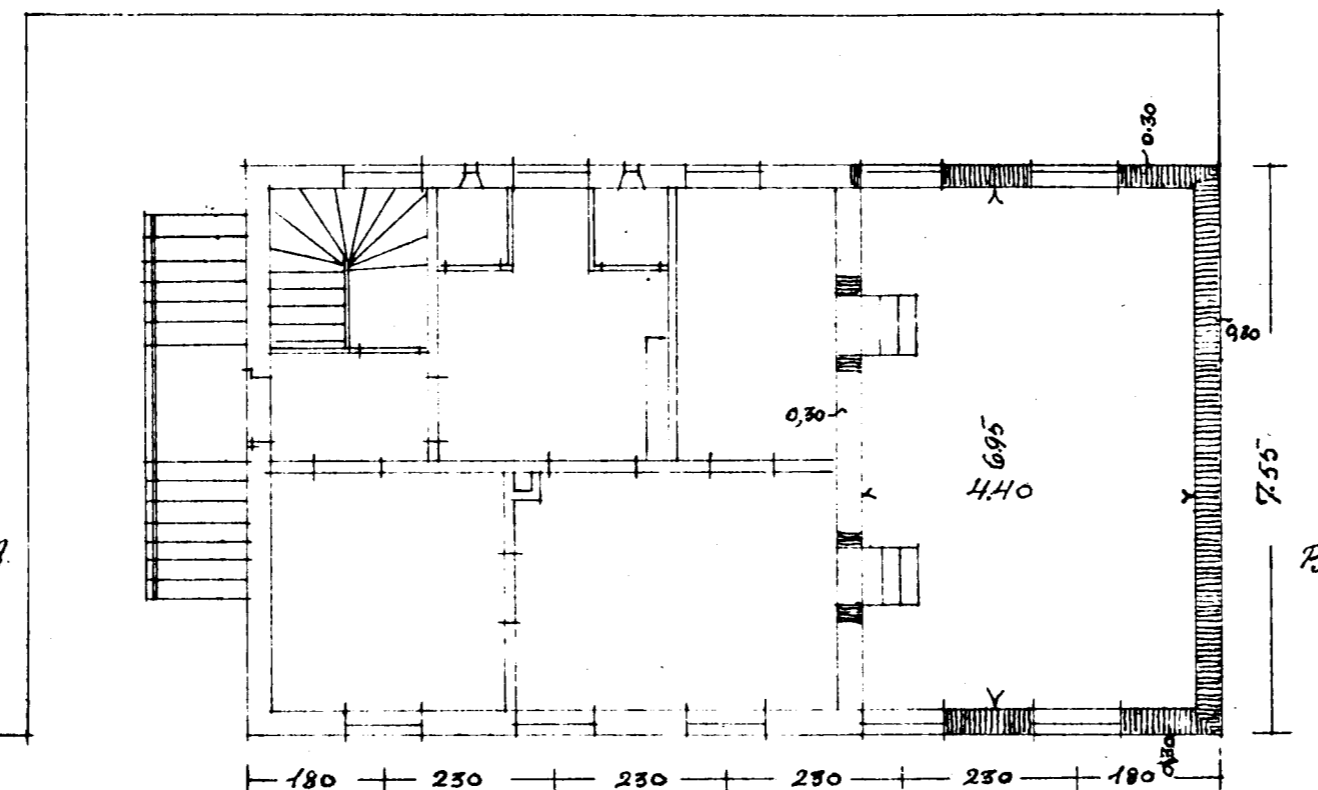
Fráhlit



Þakhlit

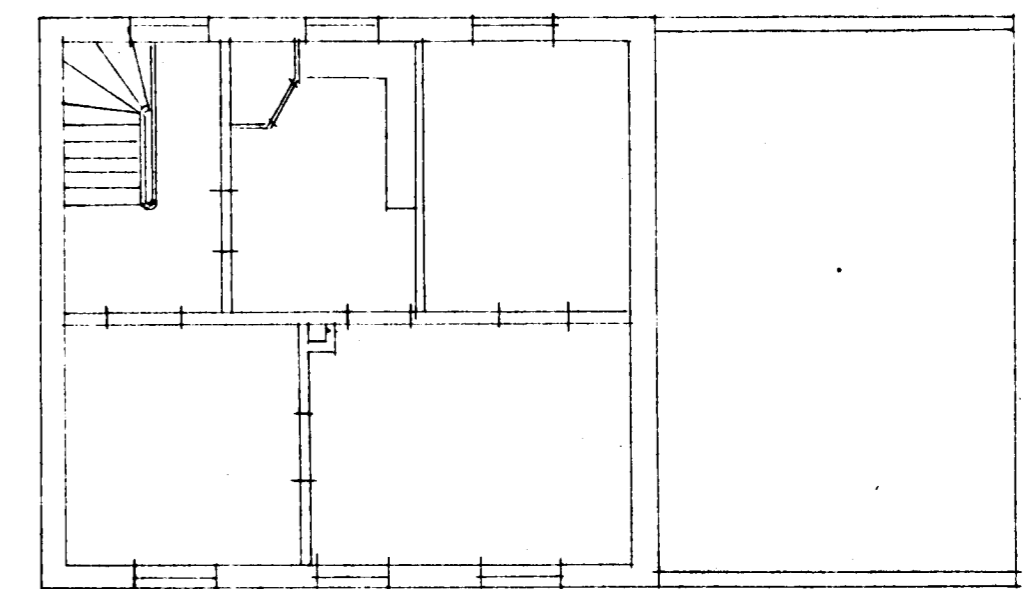


Ljallari



Stofuhúsið

1. hæð.



Reykjavík 5 Nov. 1930.
 Húsaameistari ríkisins
 Arnfríður