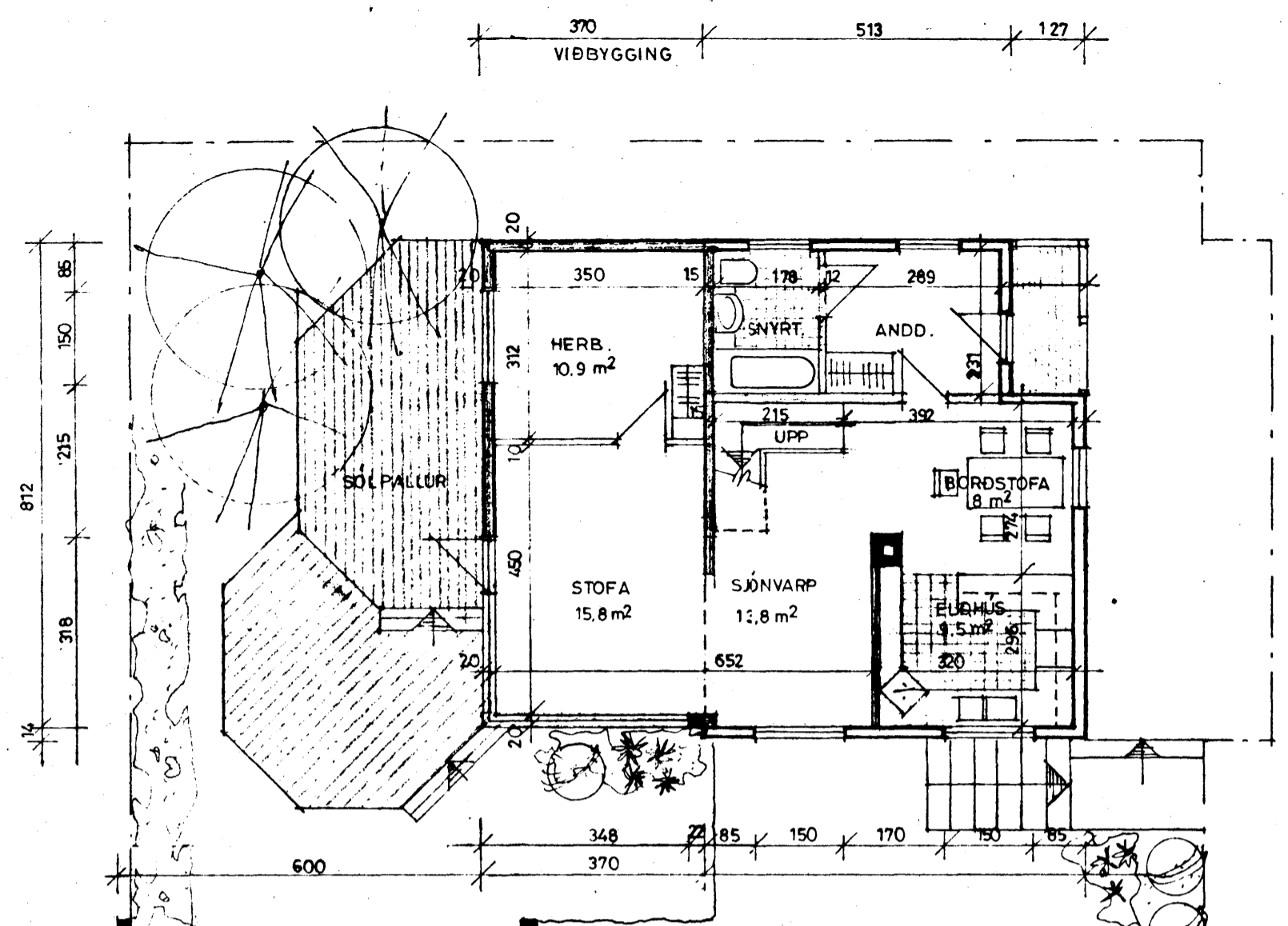
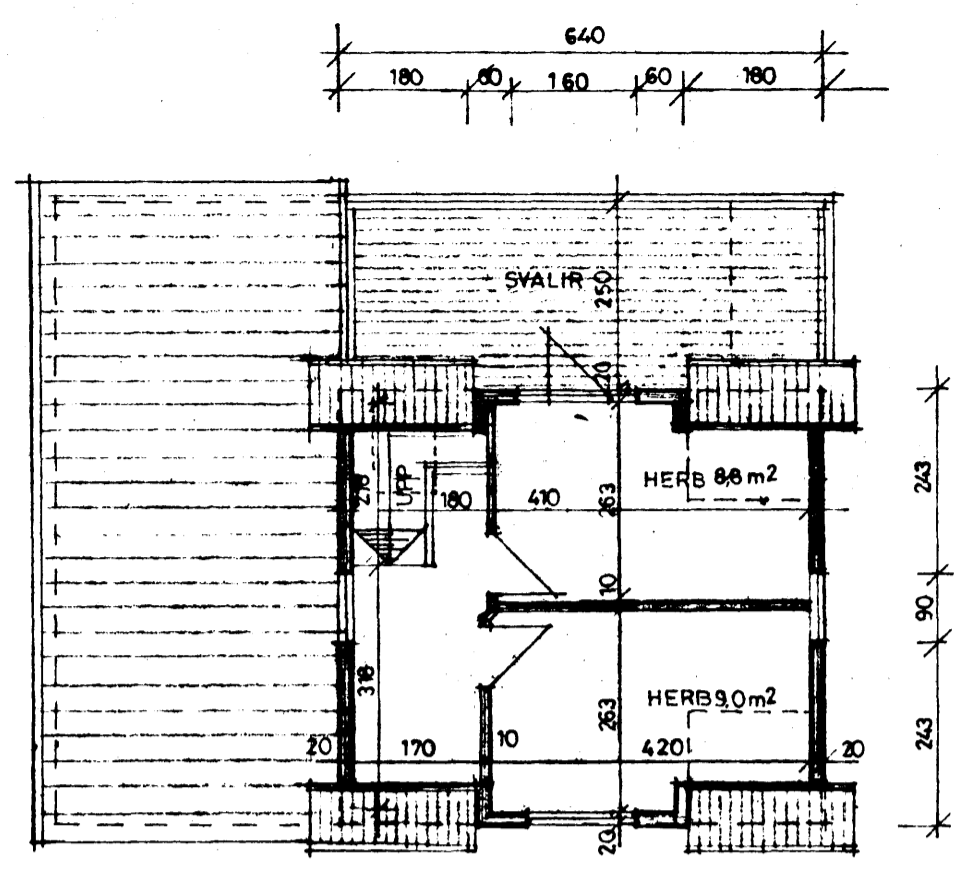


Samþykkt á fundi bygginga-  
nefndar þ. 23/6 1988

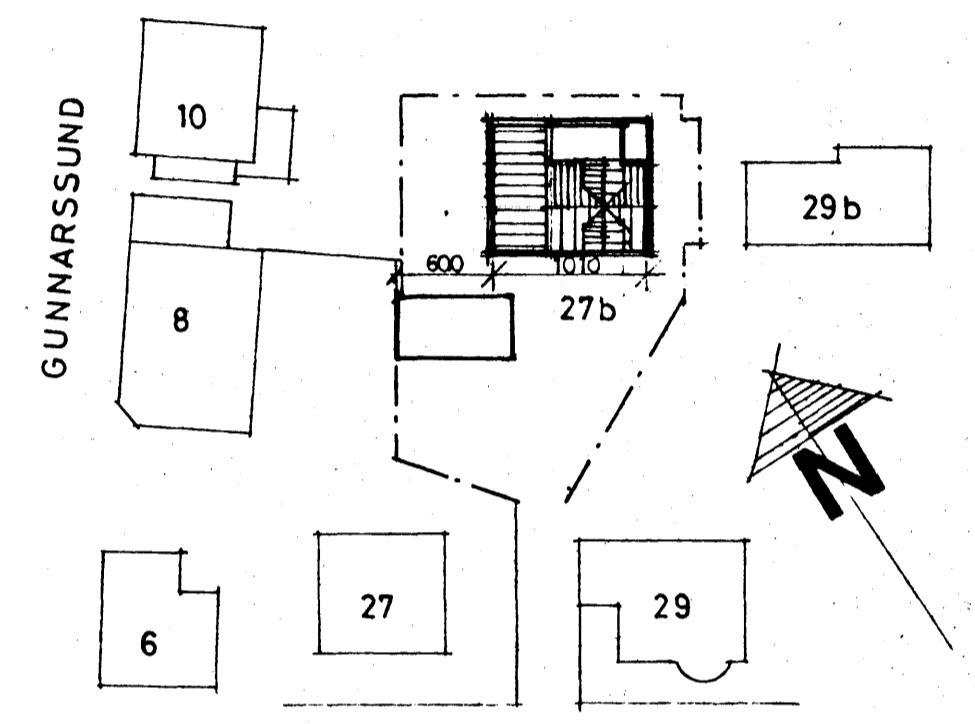
BYGGINGAFULLTRÚINN  
Í HAFNARFIRÐI



GRUNNMYND HÆÐAR & LÓÐAR 1:100

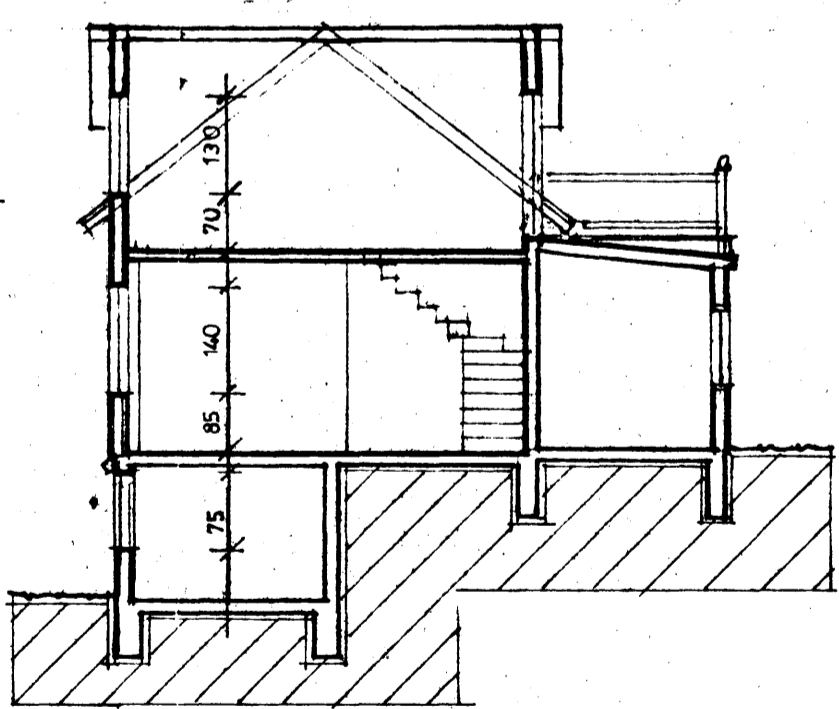


GRUNNMYND RISHÆÐAR 1:100



AUSTURGATA  
AFSTÖÐUMYND 1:500

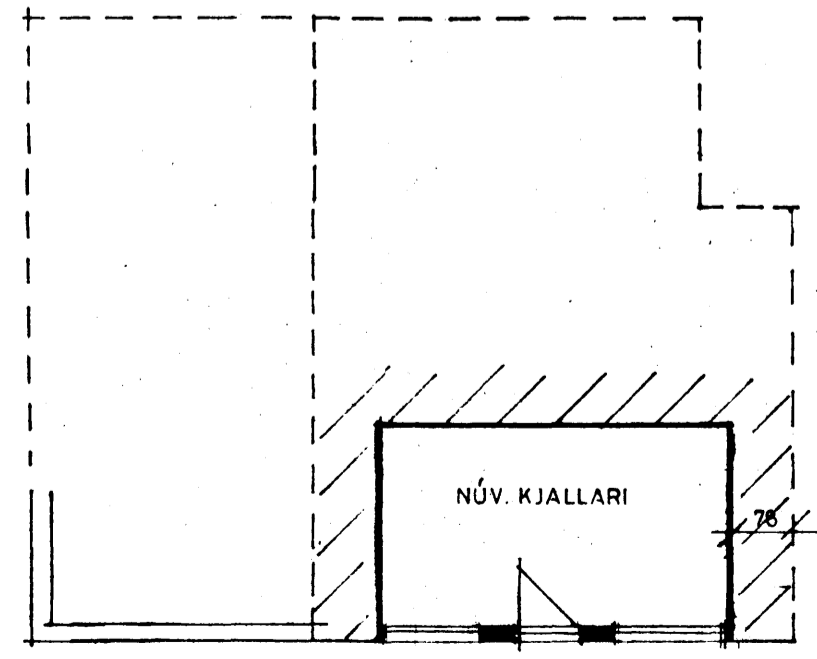
- 5.55 MENIR
- 4.46 VEGGHÆÐ KVISTA
- 3.30 VEGGH. HÚSS
- 2.66 GÖLF
- 0.00 GÖLF
- 2.00 GÖLF



SNID 1:100

8° HALLI Á PAKI VIÐBYGGINGAR  
38° HALLI Á PAKI OG KVISTUM

STÆRDIR:	FYRIR BREYTINGU	EFTIR BREYTINGU
HÚS	37 m <sup>2</sup> - 135 m <sup>3</sup>	92 m <sup>2</sup> - 279 m <sup>3</sup>
BÍLSKÚR	28 " 75 "	
ALLS	65 m <sup>2</sup> 210 m <sup>3</sup>	92 m <sup>2</sup> 279 m <sup>3</sup>



GRUNNMYND KJALLARA 1:100

ÖLL MÁL STAÐFESTIST MEÐ MÆLINGU Á STAÐNUM

BREYTT Í MAÍ 1988

TEIKNISTOFAN SUÐURGÖTU 14 220 HAFNARFJÖRÐUR  
PÁLL V. BJARNASON ARKITEKT FÁI SÍMI 54355

205.02

AUSTURGATA 27 b, HAFNARFIRÐI-VIÐBYGGING  
GRUNNMYNDIR, SNID, AFSTÖÐUMYND

*Páll V. Bjarnason*

DAGS	MARS 1988
KVARDI	1:100 - 1:500
HANNAÐ	P.V.B.
TEIKNAD	A.E.
YFIRF	P.V.B.