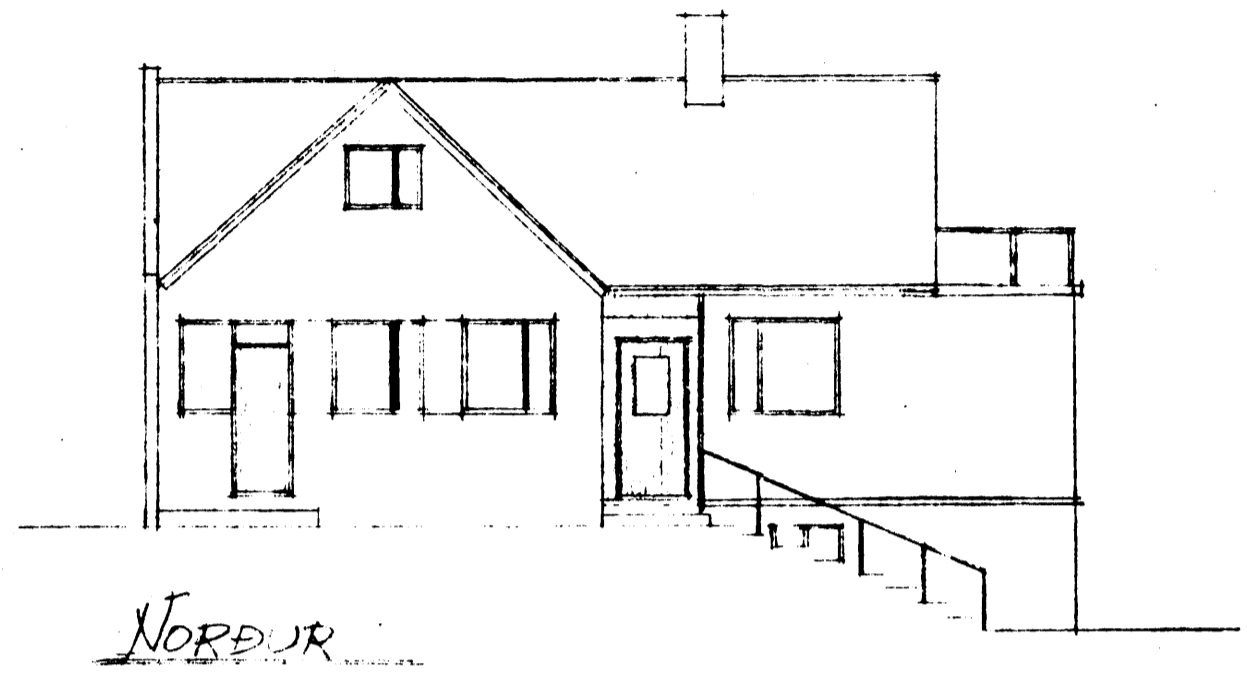
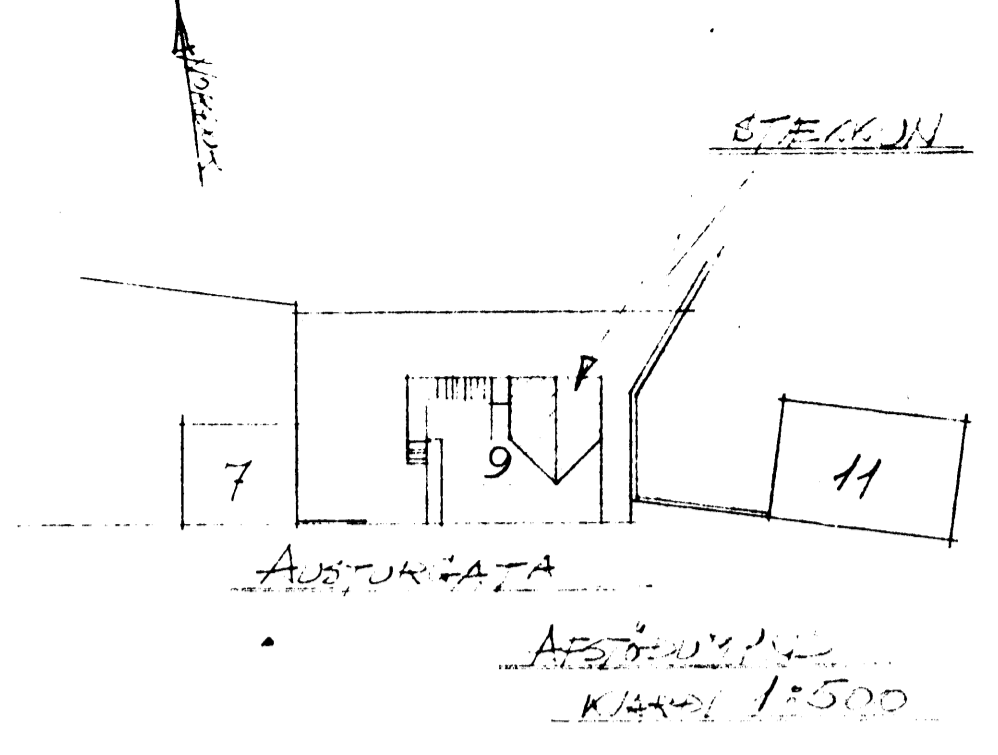


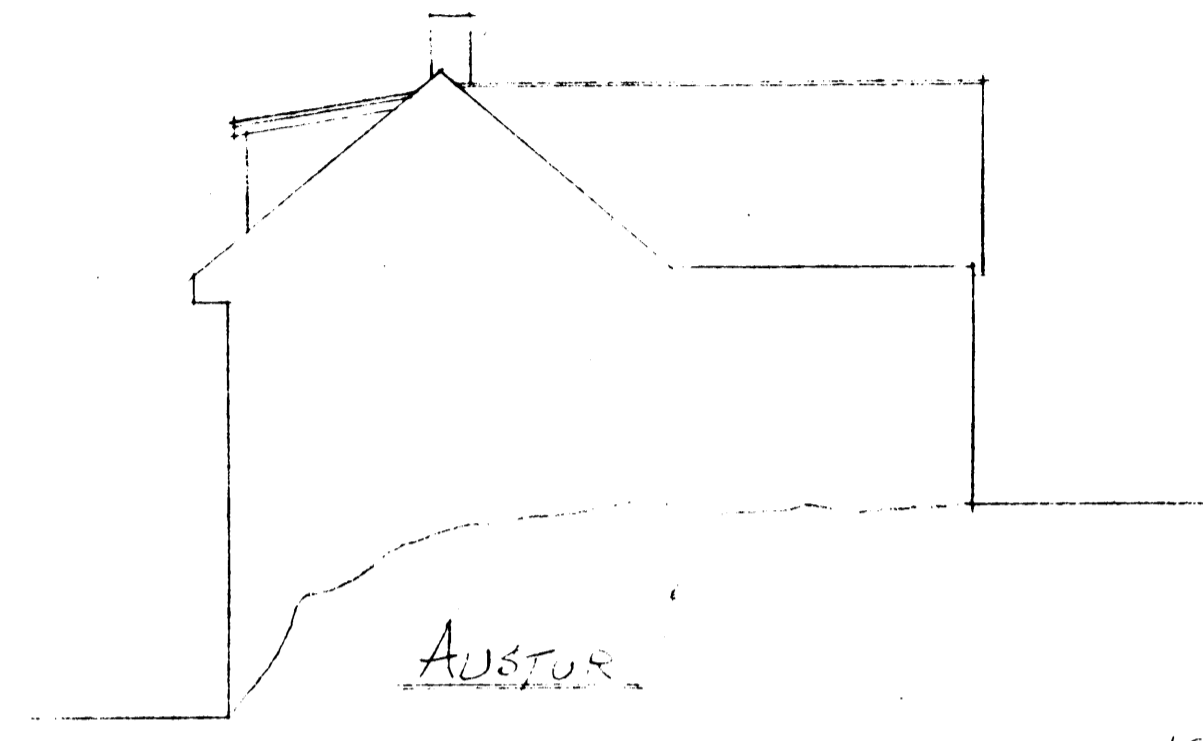
Samþykkt á fundi bygginga-
nefndar þ. 26. 5. 1941

BYGGINGAFLUTÓUNN
I HAFNARFIRÐI
E. Sigurðsson

Áskilið er að rými til uppkaupa
eigninni séðar, af skipulagsáætlunum,
verði viðbygging þessi ekki til að
auka á bætaskylda bæjarsjóðs af
þeim áætlunum.

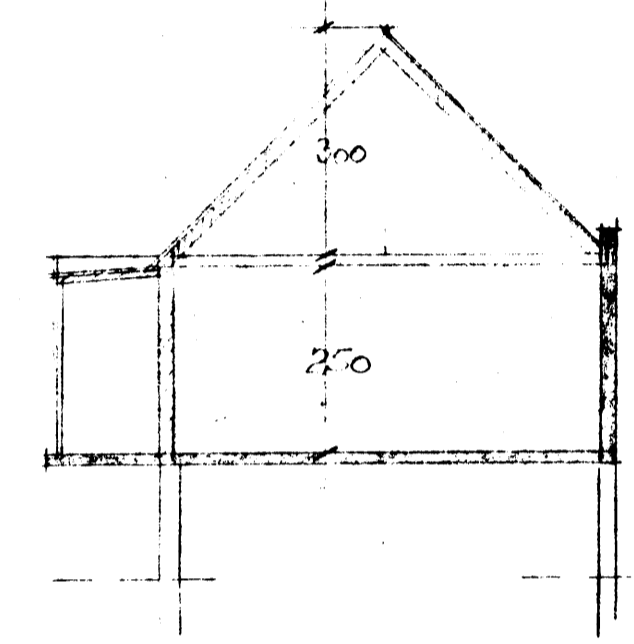
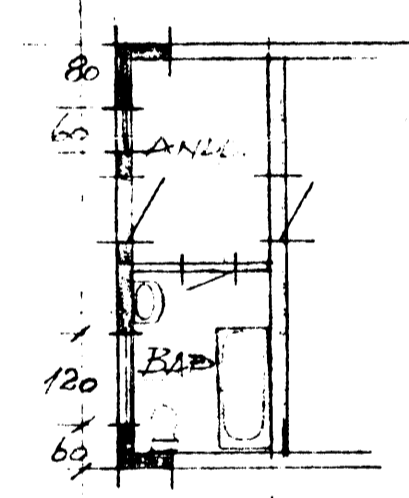


NORÐUR

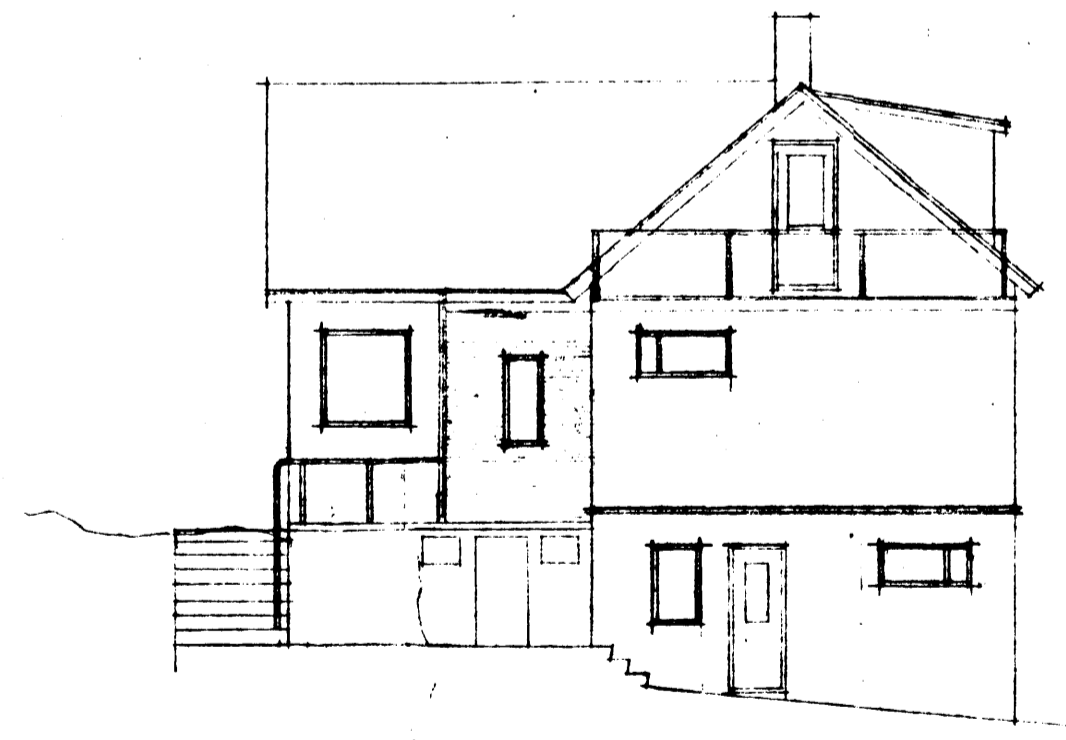


AUSTUR

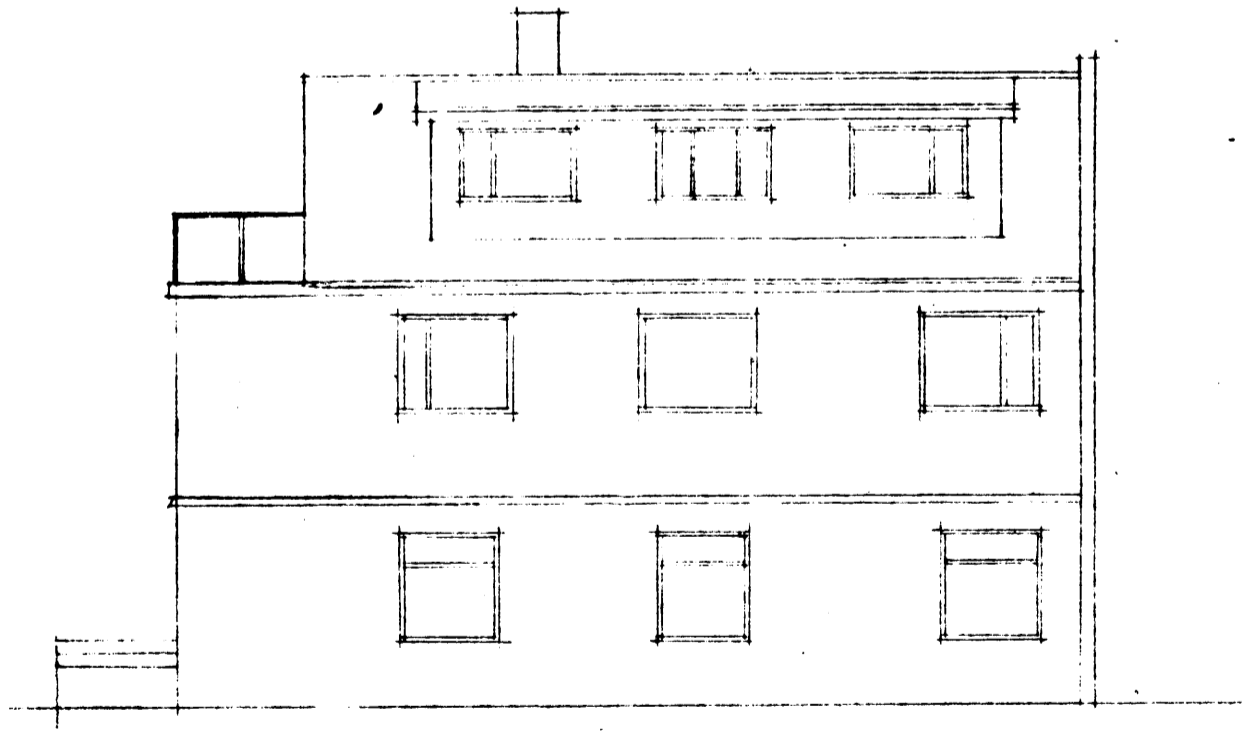
KJALLARI



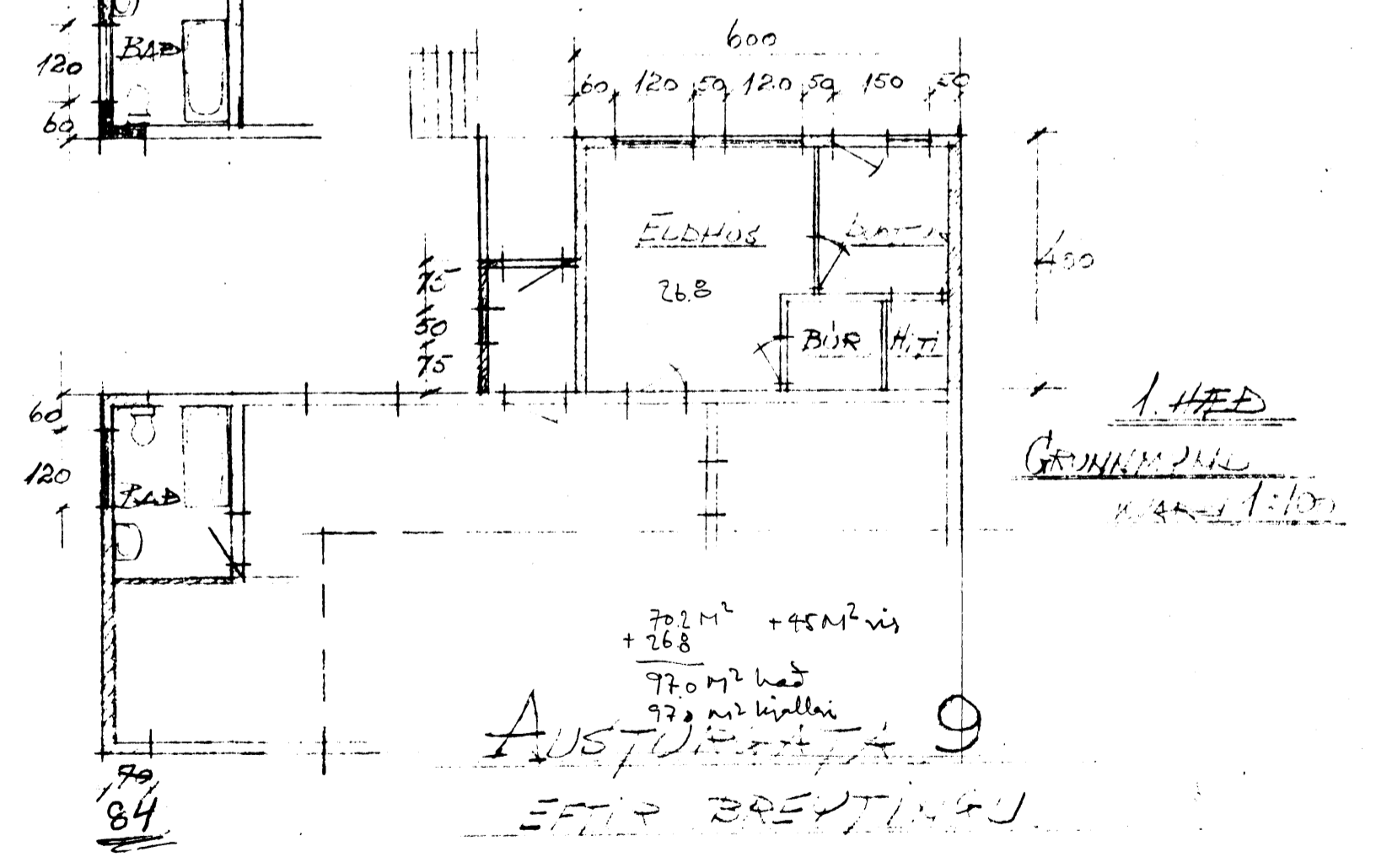
SNIÐ



VESTUR



SEÐUR



1. HÆÐ
GRUNNPLÁN
KL. 1:100

AUSTURVINGUR 9
EFTIR BÆYTINGU

5,5 m
30,0 m

Höfundur árið 1940
E. Sigurðsson