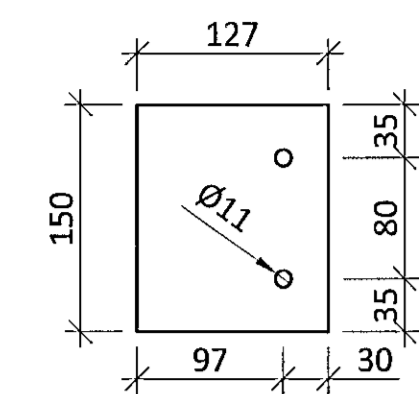
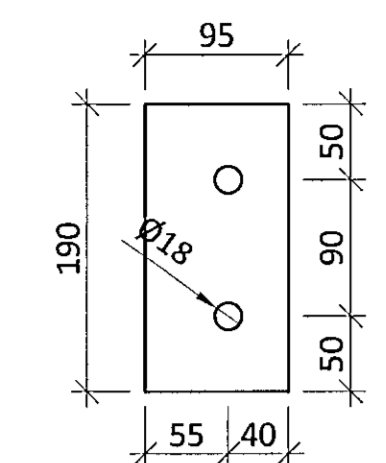


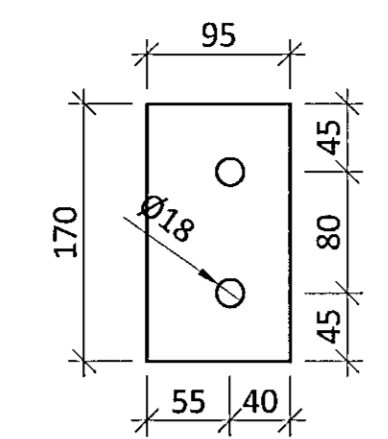
SP1 t=5mm - M1:5  
S235



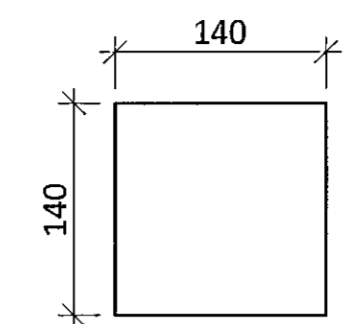
SP2 t=10mm - M1:5  
S235



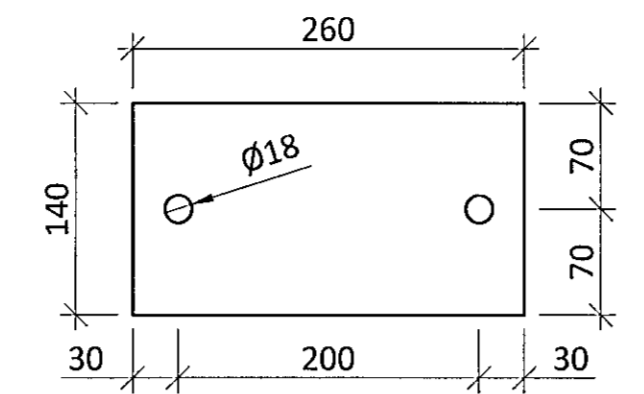
SP3 t=10mm - M1:5  
S235



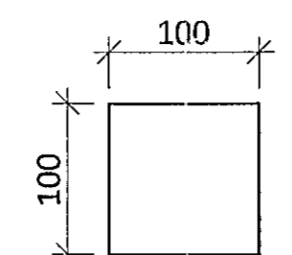
SP4 t=5mm - M1:5  
S235



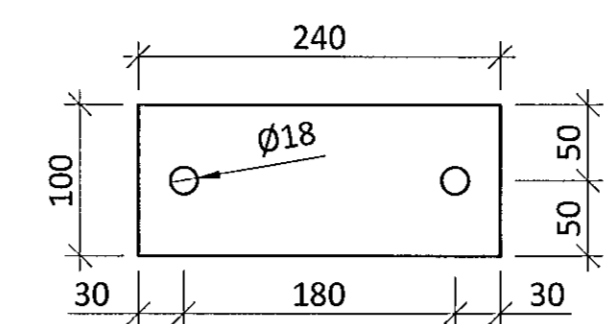
SP5 t=16mm - M1:5  
S235



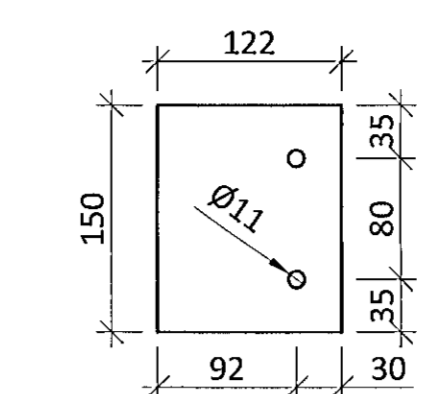
SP6 t=5mm - M1:5  
S235



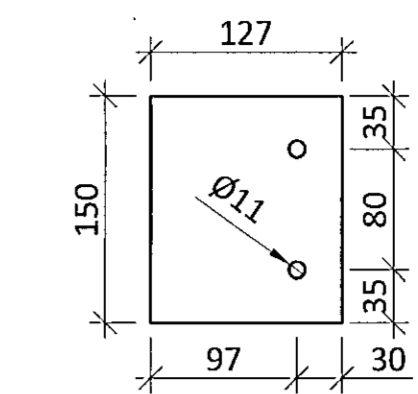
SP7 t=16mm - M1:5  
S235



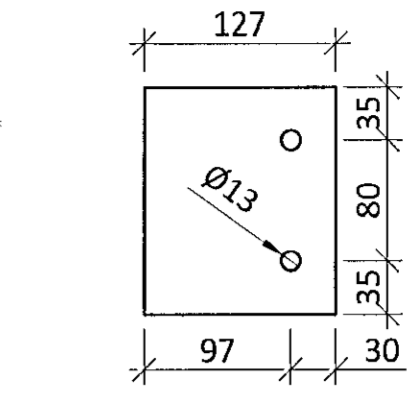
SP8 t=10mm - M1:5  
S235



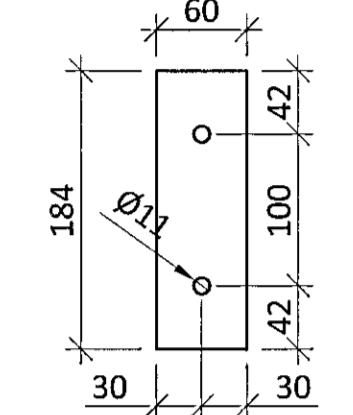
SP9 t=10mm - M1:5  
S235



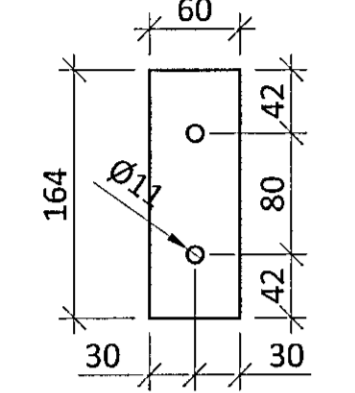
SP10 t=10mm - M1:5  
S235



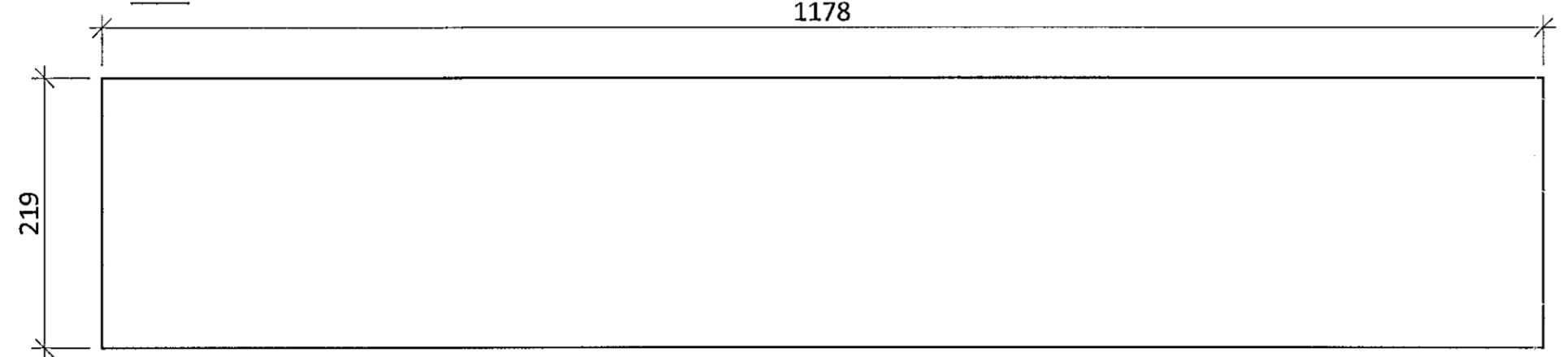
SP11 t=5mm - M1:5  
S235



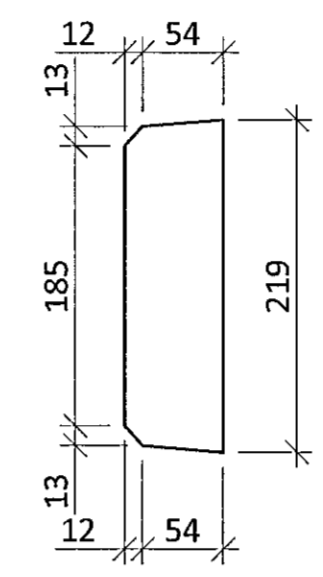
SP12 t=5mm - M1:5  
S235



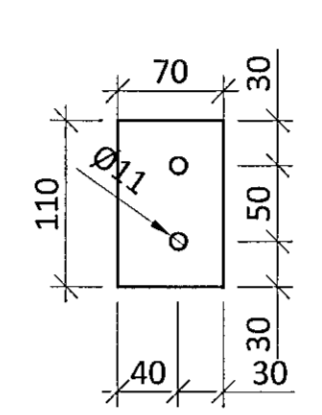
SP13 t=10mm - M1:5  
S235



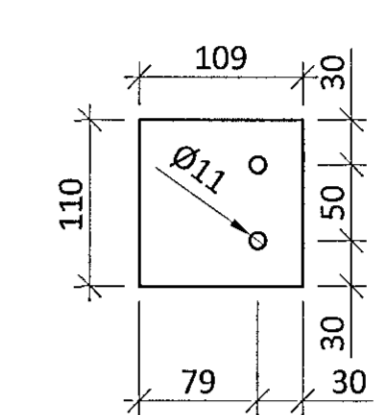
SP14 t=5mm - M1:5  
S235



SP15 t=5mm - M1:5  
S235



SP16 t=5mm - M1:5  
S235



STÁLVIKRI:  
 ALLT STÁL SKAL VERA S235 NEMA  
 ANNAD É SÉRSTAKLEGA TEKID FRAM.

FRAMKVÆMD RAFSUÐUVINNUNNAR  
 SKAL VERA Í SAMRÆMI VÍÐ STAÐALINN  
 EN 1011. SUÐUFERLAR SKULU VERA  
 SKV. ÍST EN ISO 15614. ÖLL RAFSUÐA  
 SKAL UNNIN AF RAFSUÐUMÖNNUM  
 SEM HAFA TIL ÞESS TILSKILIN RÉTTINDI  
 SKV. ÍST EN 287-1.

BOLTAR, SKINNUR OG RÆR:  
 HEITGALVANHÚÐAD 8.8.

ALLT STÁLVIKRI SKAL GRUNNAÐ MEÐ  
 RYÐVARNARGRUNNI AÐ LÁGMARKI  
 OG ELÐVARID SKV. FORSKRIFT  
 BRUNAHÖNNUÐAR

ALLAR ÖNEFNÐAR SUÐUR SKULU VERA  
 STÚFSUÐUR.  
 ALLIR ÖNEFNÐIR BITAR SKULU VERA  
 UNP240  
 MILLIGÓLF ERU HEILKLÆDD MEÐ 21mm  
 GRENKROSSVIÐ SEM SKRÚFAÐUR ER Í  
 C-PROFILA OG STÁLVIKRI MEÐ Ø4,8X40  
 SJÁLFBORANDI SKRÚFUM c/c150.

KROSSVIÐ SKAL SKEYTA SAMAN Á  
 C-PROFILUM OG SKAL VÍXLA  
 SAMSKYPTUM Á MILLI RADA.

SAMSKYPTI SEM EKKI LENDA Á  
 UNDIRSTUÐNINGI SKAL SKEYTA SAMAN  
 MEÐ KROSSVIÐSLASKA AÐ NEÐAN OG  
 SKRÚFA Í LÍM MEÐ Ø4,0X50  
 TRÉSKRÚFUIM c/c200

ÁRITUN ADALTÆLIFRÉÐA: *[Signature]* KT. 01251-3019

BR.	DAGS.	BREYTING	SAMP.



FLUGVELLIR 1 HAFNARFIRDI  
 NÝBYGGING  
 BURÐARVIRKI  
 MILLIGÓLF - STÁLVIKRI  
 PLÖTUR - SÉRMYNDIR

SAMÞYKKT		KT. 010345-4059 swa	
HÖNNUÐUR	YFIRFARIÐ	DAGS. ÚTG.	DAGS. BREYT.
PÓ	AK	21.07.14	
MKV.	VERKNR.	TEIKNR.	BREYT.
1:5	14014	1 - 2070	