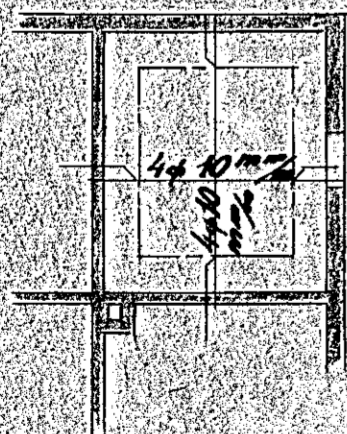
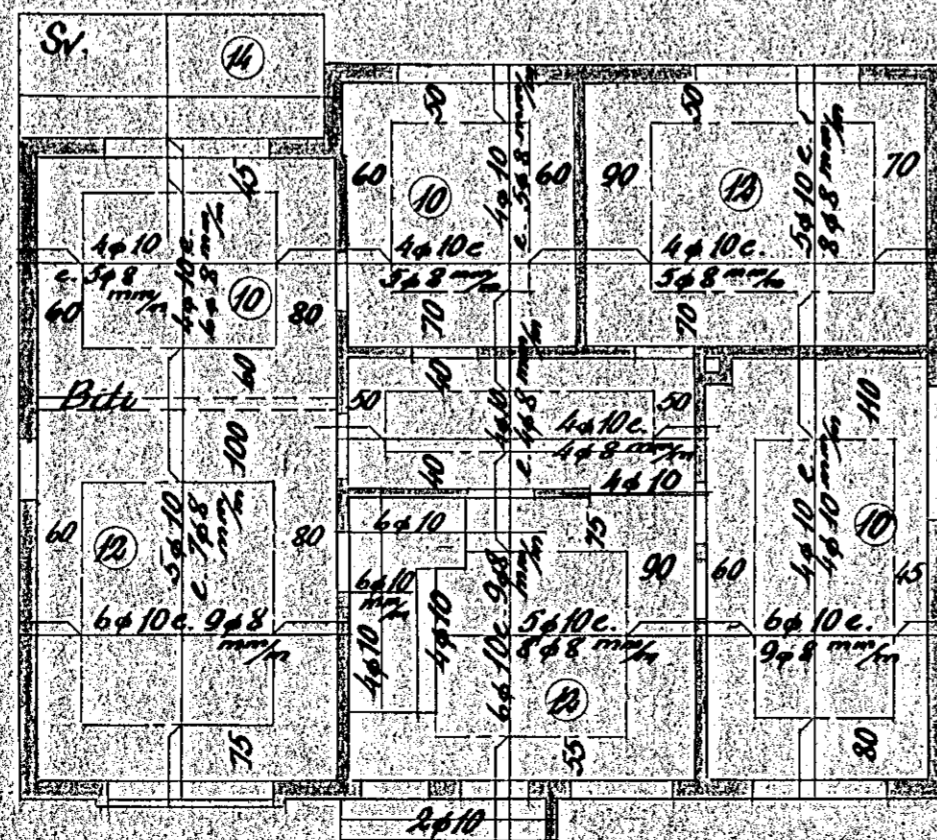


Blöndun steypu 1:2:3

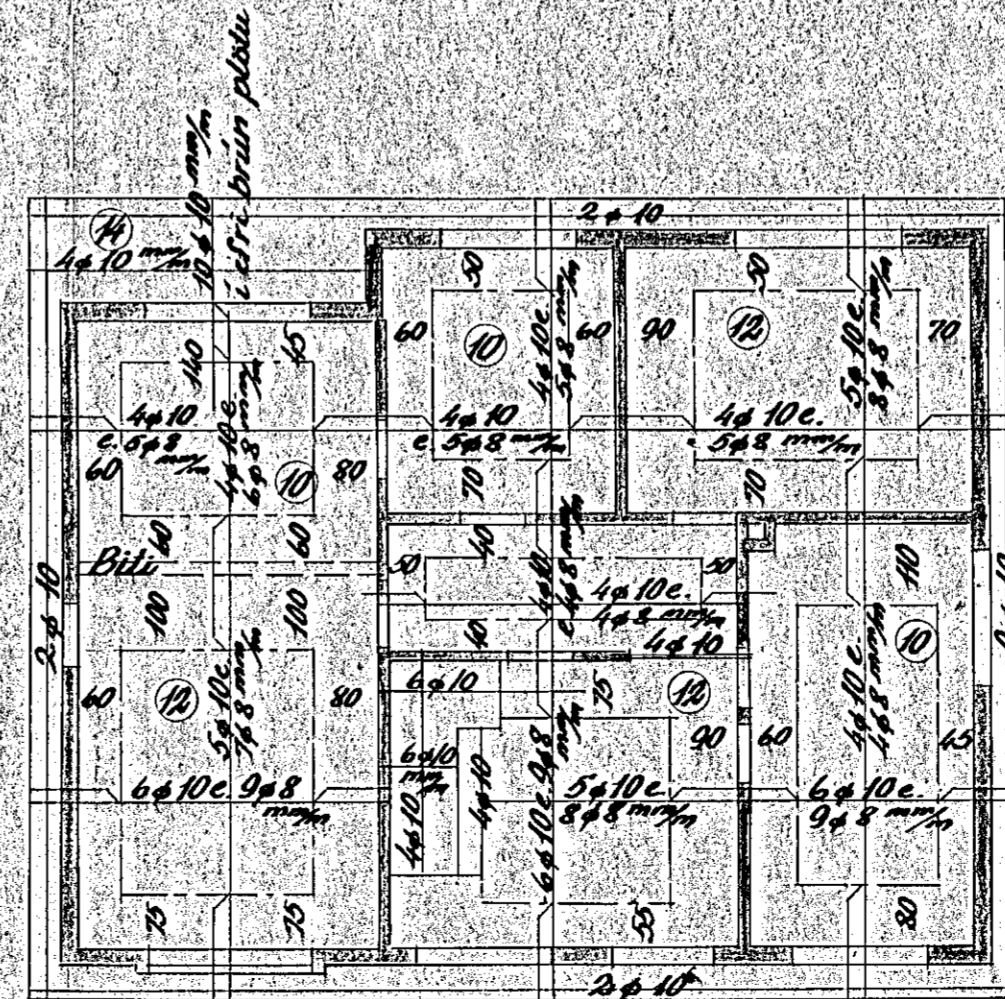
Yfir dyr og glugga korni 2ø10, nema haf  
≥ 2,0 m, þá korni 4ø10



Loft yfir kjallara 1:100



Loft yfir 1 hæð 1:100



Loft yfir 2 hæð 1:100

Hafnarf. í sept. 1954  
S. P. Ólafsson