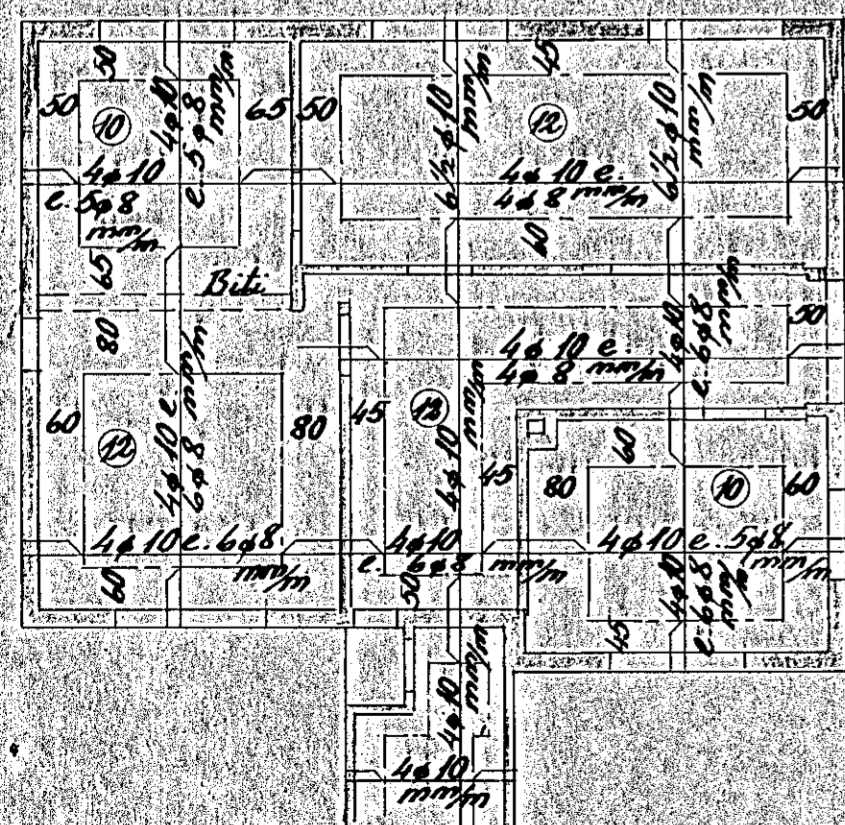
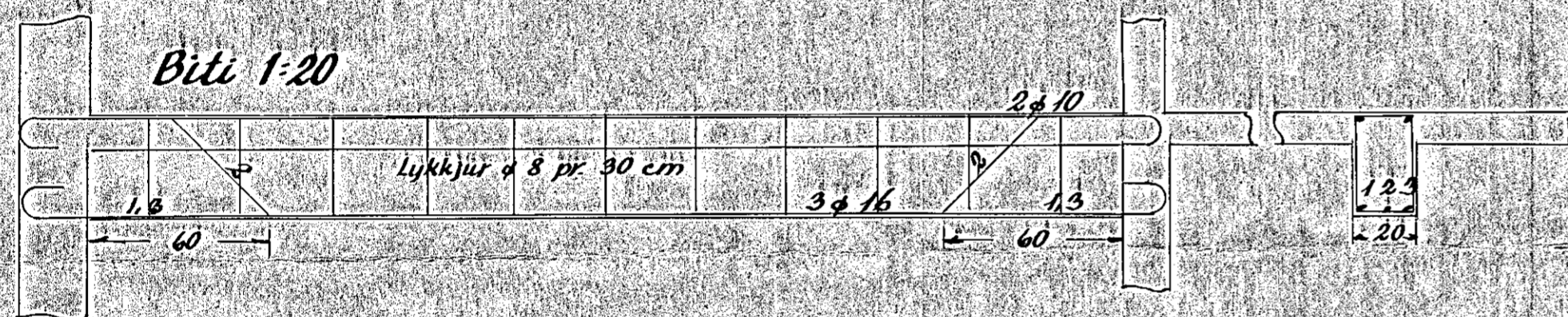


Blöndun sleypu 1:2:3

Yfir dyr og glugga korni 2  $\phi$  10, nema haf  $\geq$  2,0 m,  
þá korni 4  $\phi$  10



Loft yfir 1. hæð 1:100



Loft yfir 2. hæð 1:100

Hafnarf. í ágúst 1954

Sig. J. Ólafsson