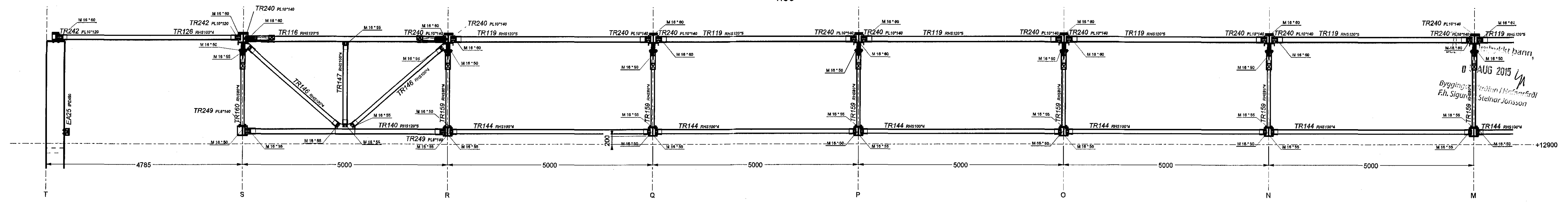
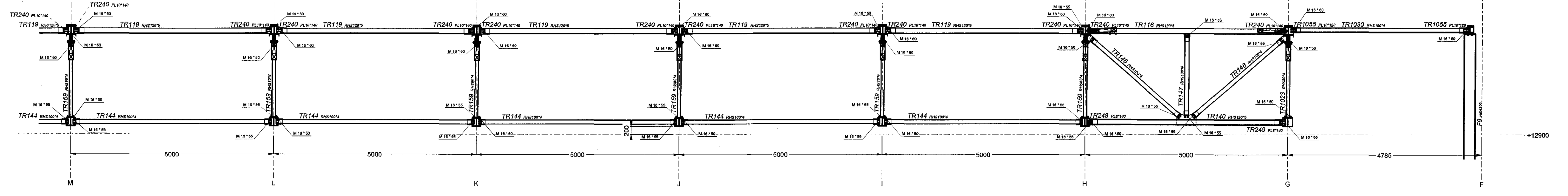


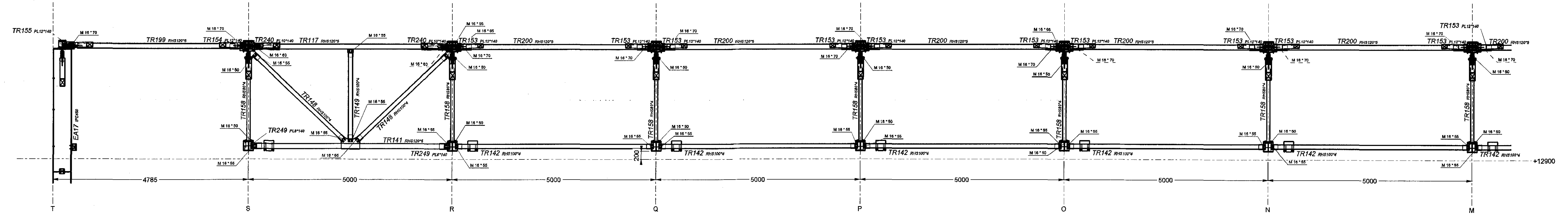
AXIS 6
1:50



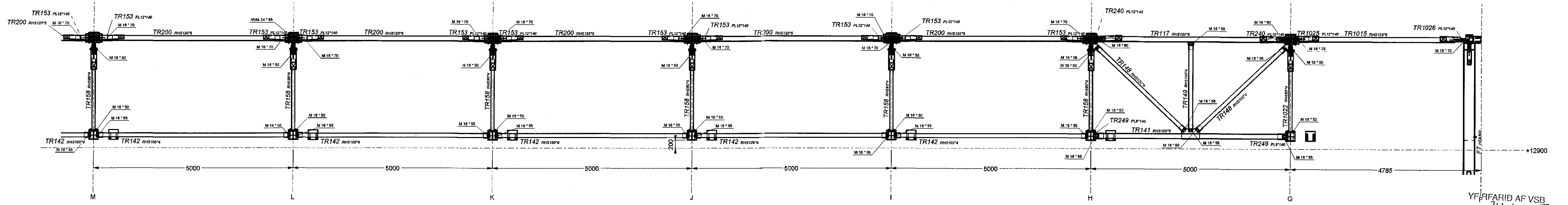
AXIS 6
1:50



AXIS 7
1:50



AXIS 7
1:50



YFIFARID AF VSB
dags. 24.6.2015

FOR MORE DETAILS SEE DRAWING: 2015-126-01-01-03

Scale: M - class A3, DIN 971 or DIN 975 - for galvanized Scale: HVM - class 10, DIN 9714 - for galvanized	For all bolted steel connections, use bolted steel connections (see table 1) For bolted steel to concrete, use bolted steel (see table 2)	Execution class: EN 1090-2	Execution class: EN 1090-2
00	First issue	02.06.2015	A. Chorna
Rev:	Revision description:	Date:	Drawn by: P. Kozłowski
Supplier:			Designed by: G.R. Olszajn
CEDRUS EHF.		Miskuni 23, 800 Seltis, Iceland	
ENGINEERING OFFICE KOZŁOWSKI-PROJEKT		Zawilsky Czarnecki Square 4A/7, 73-212 Szczecin, Poland tel. +48 91 652 21 52, e-mail: biuro@kozowski.pl	
Project: Oseyarbraut 22	Object: Main Building	Phase: Main Structures	
Drawing title: General Arrangement - Axes 6 & 7	Drawing No.: 2015-126-01-01-19	Rev: 00	Format: A1