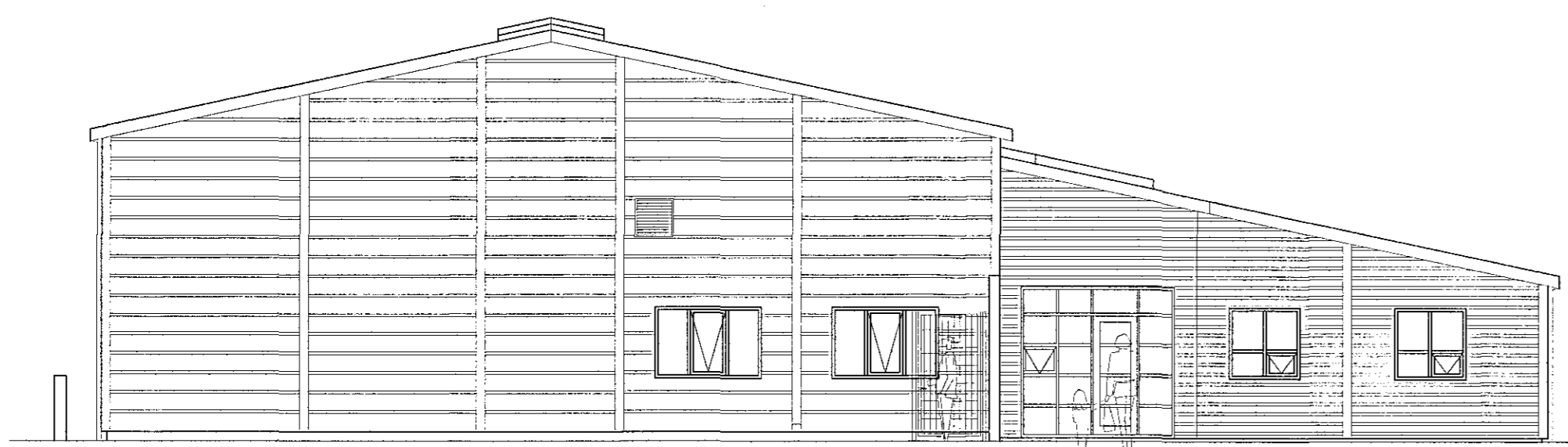
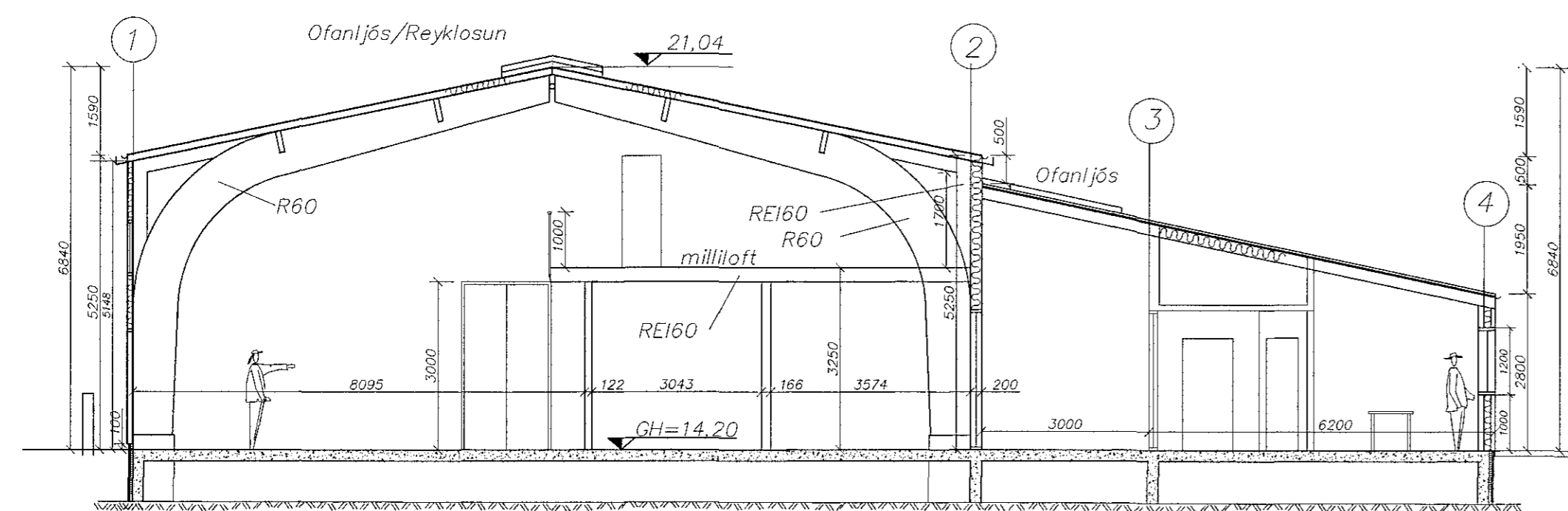


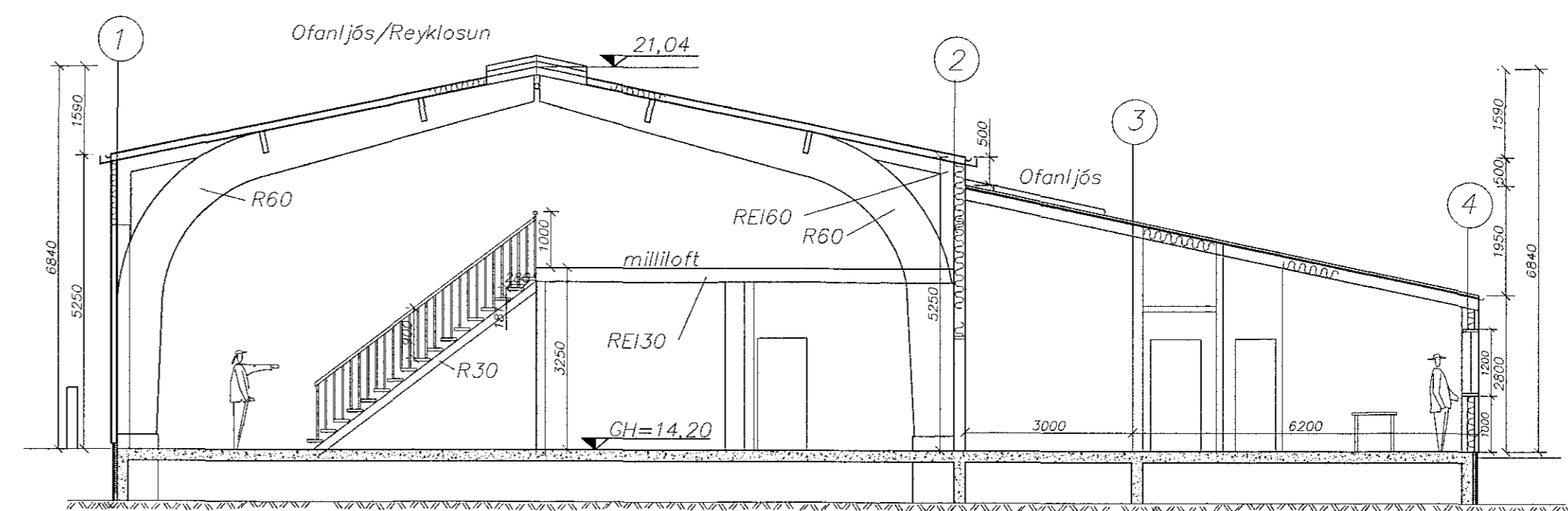
Suð-Austur



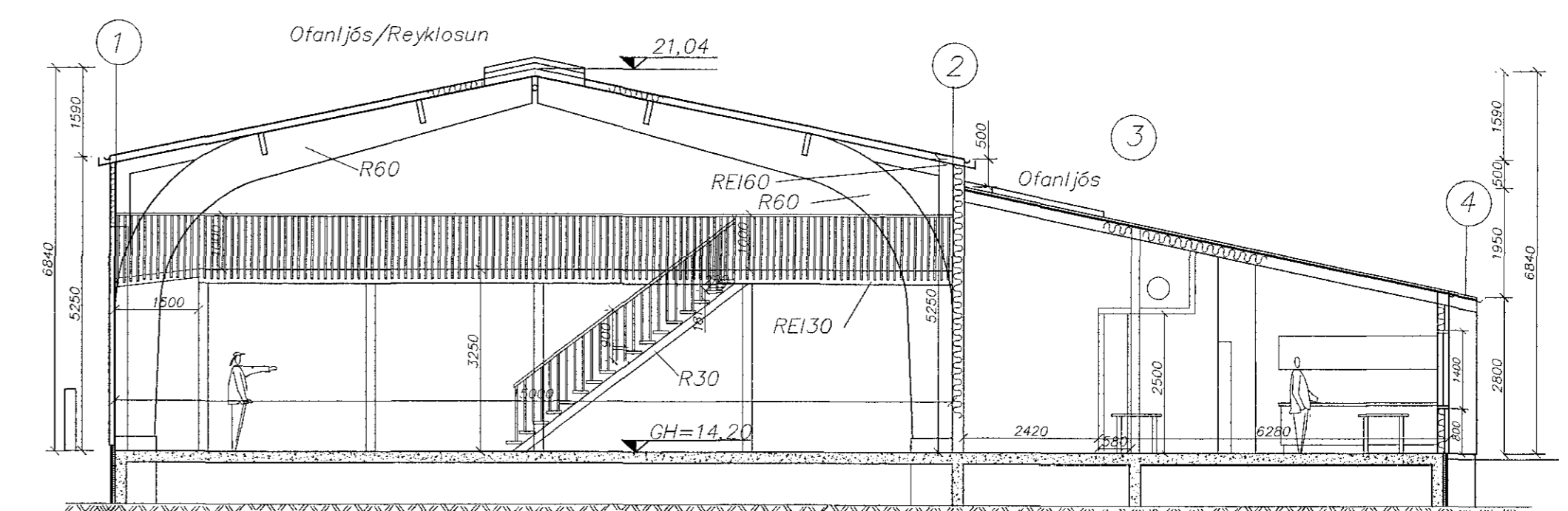
Norð-Vestur



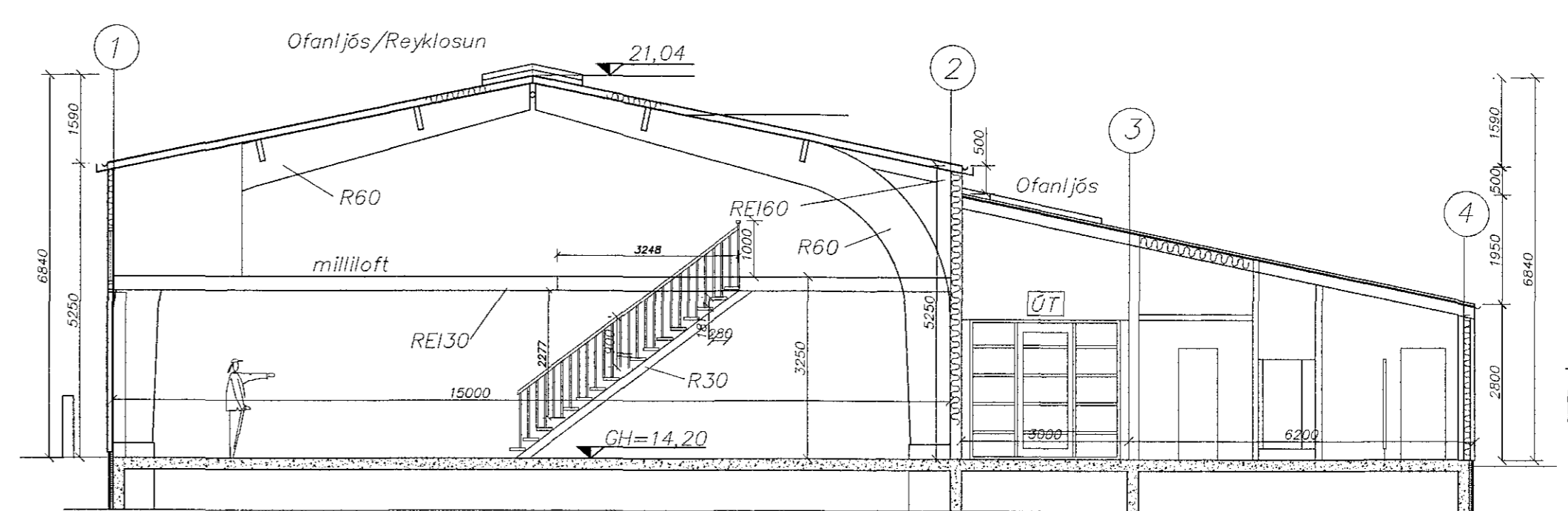
Snið A-A Þjoppuð böglabergsfylling



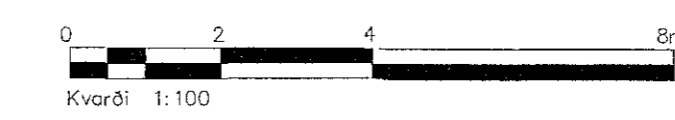
Snið B-B Þjoppuð böglabergsfylling



Snið C-C Þjoppuð böglabergsfylling



Snið D-D Þjoppuð böglabergsfylling



| | | |
|----------|-------------------------------------|------|
| 23.09.14 | Reyndart. texta bätt við | AS |
| 11.09.14 | Reyndartekning | PVG |
| 02.07.01 | Stöng R30 | SG |
| 22.05.01 | Brunamál og loftþrækkiefra bätt við | SG |
| 19.1.01 | klæðningu breytt | SG |
| 14.12.00 | Brunamál | SG |
| dags | breyting | nafn |

| | | | |
|---|------------------------|-----------------|---------------------|
| Hringhella 9, Hafnarfirði | | | |
| Útlit og snið | | | |
| Strendingur ehf. Verkfræðipjónusta Reykjavíkvegur 46 • 220 Hafnarfirði Sími 565 5640, Fax 565 5641 | hannað: AS | teiknað: JW | yfirfarir: |
| Hafnarfirði 23.09.2014 Amanundur Sigvaldason | dagsetning: októ. 2000 | teikn. nr.: 103 | málkvarði: 1:100 A1 |