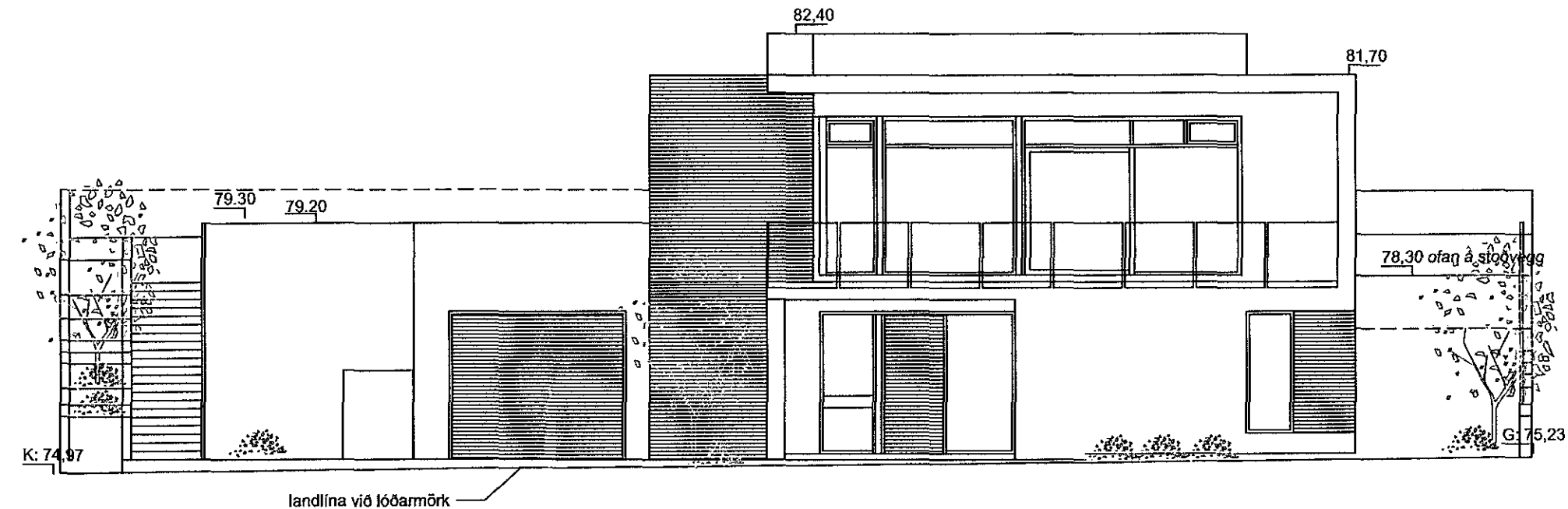
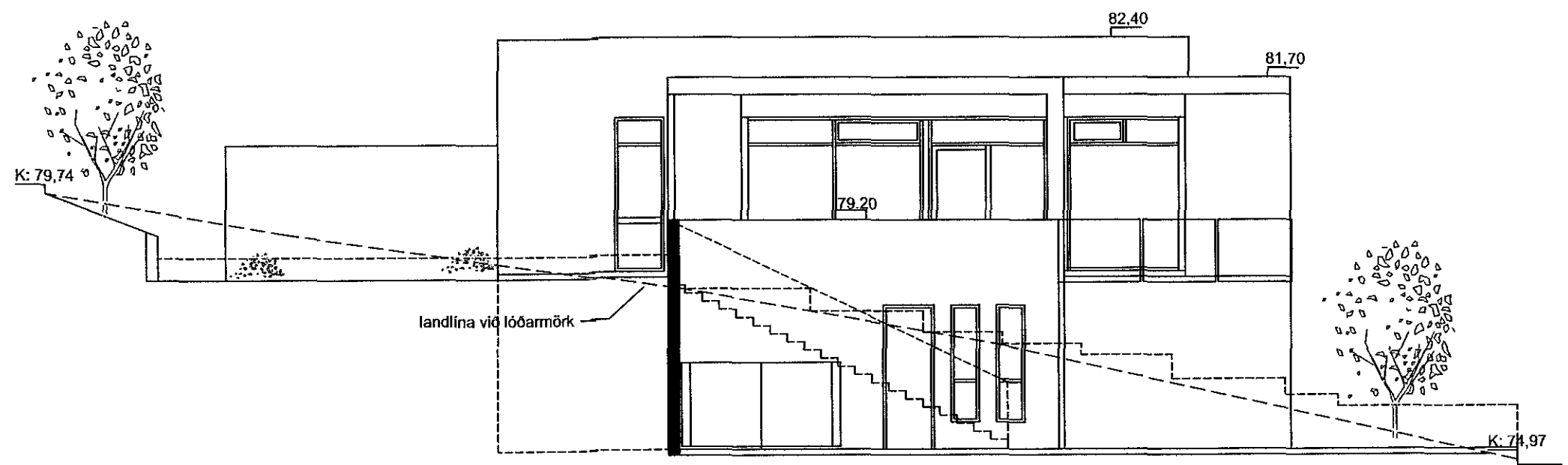


2-15/16.1601365

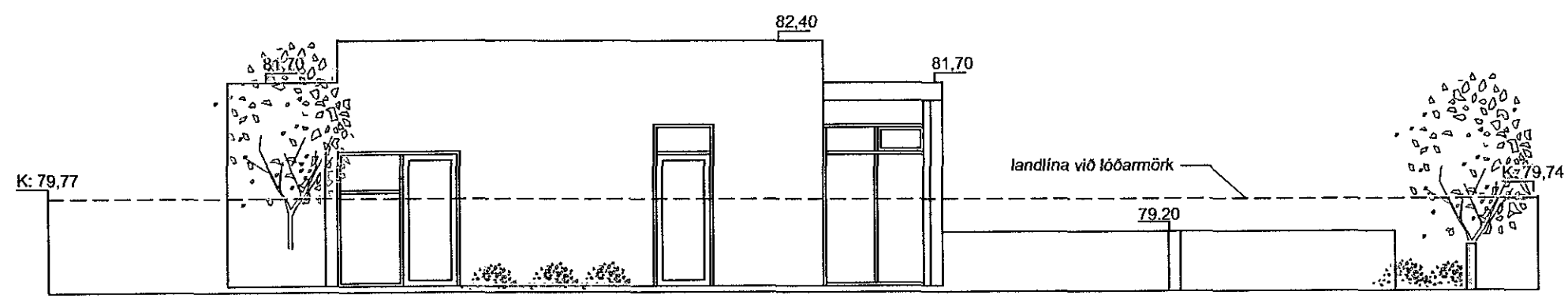
Samþykkt þann
11. maí 2016
Byggingafulltrúinn í *Álfhóli*



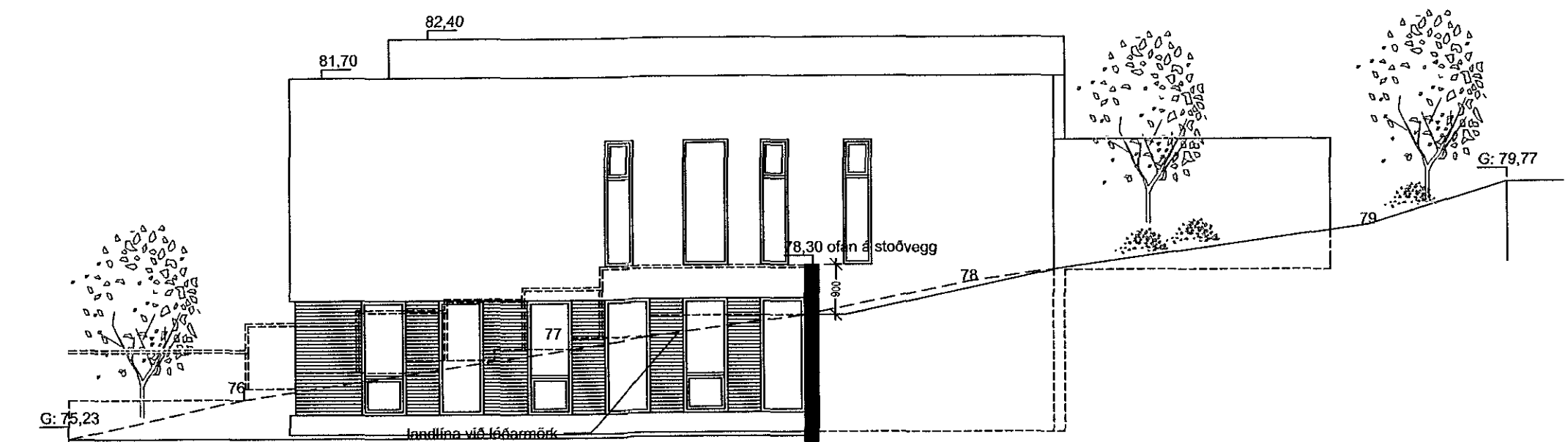
útlit til austurs



útlit til suðurs



útlit til vesturs



útlit til norðurs

Gríma arkitektar

Hlíðarás 4 - 221 Hafnarfjörður
S: 511-6777 / 897-3760
www.grimaark.is

Undirskrift hönnuðar *Sigríður Ólafsdóttir*

Aðalhönnuður: Sigríður Ólafsdóttir arkitekt FAI - kl. 071070-5069
netfang: sigga@grimaark.is

FURUÁS 33
REYNDARTEIKNING
Ásýndir

LAGSETNING: 18.4.2016 TEGUNAF: SÓ KWEEK: 1500 / 1:100

VERK NÚMÉR: 200710-15 TERNINGA NÚMÉR: A-0.003 BLETTA: