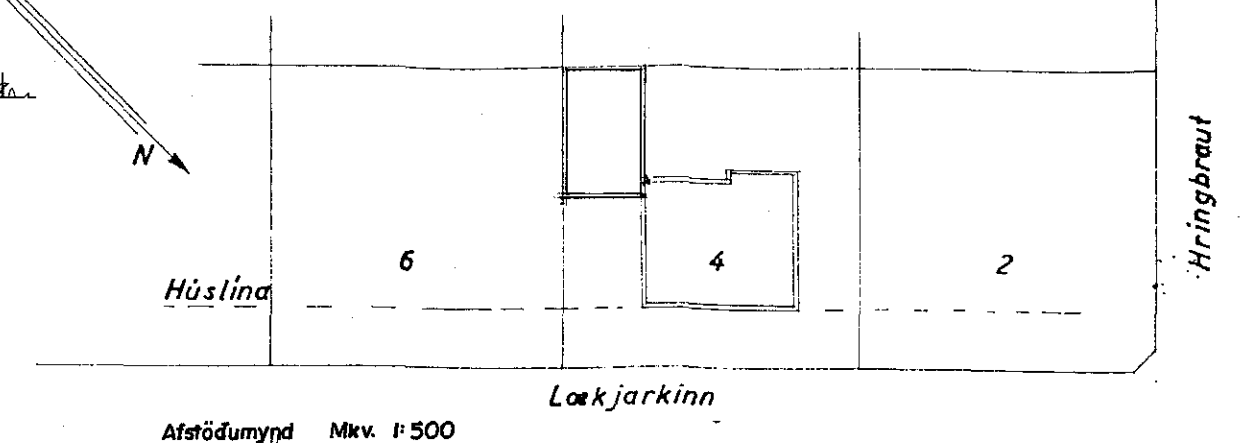
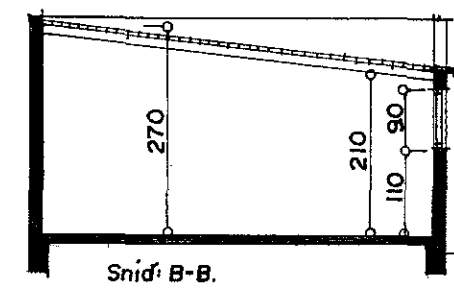
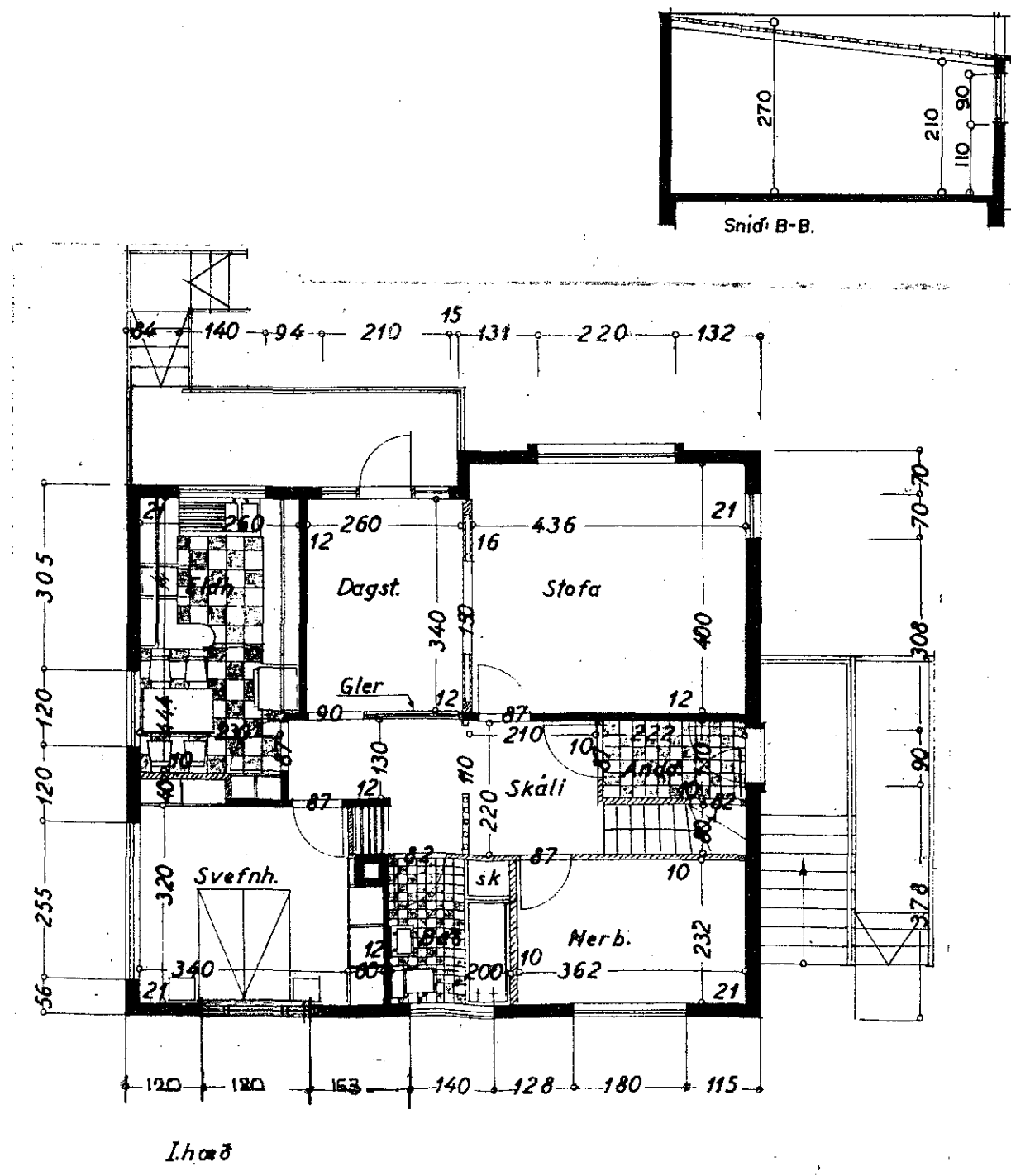
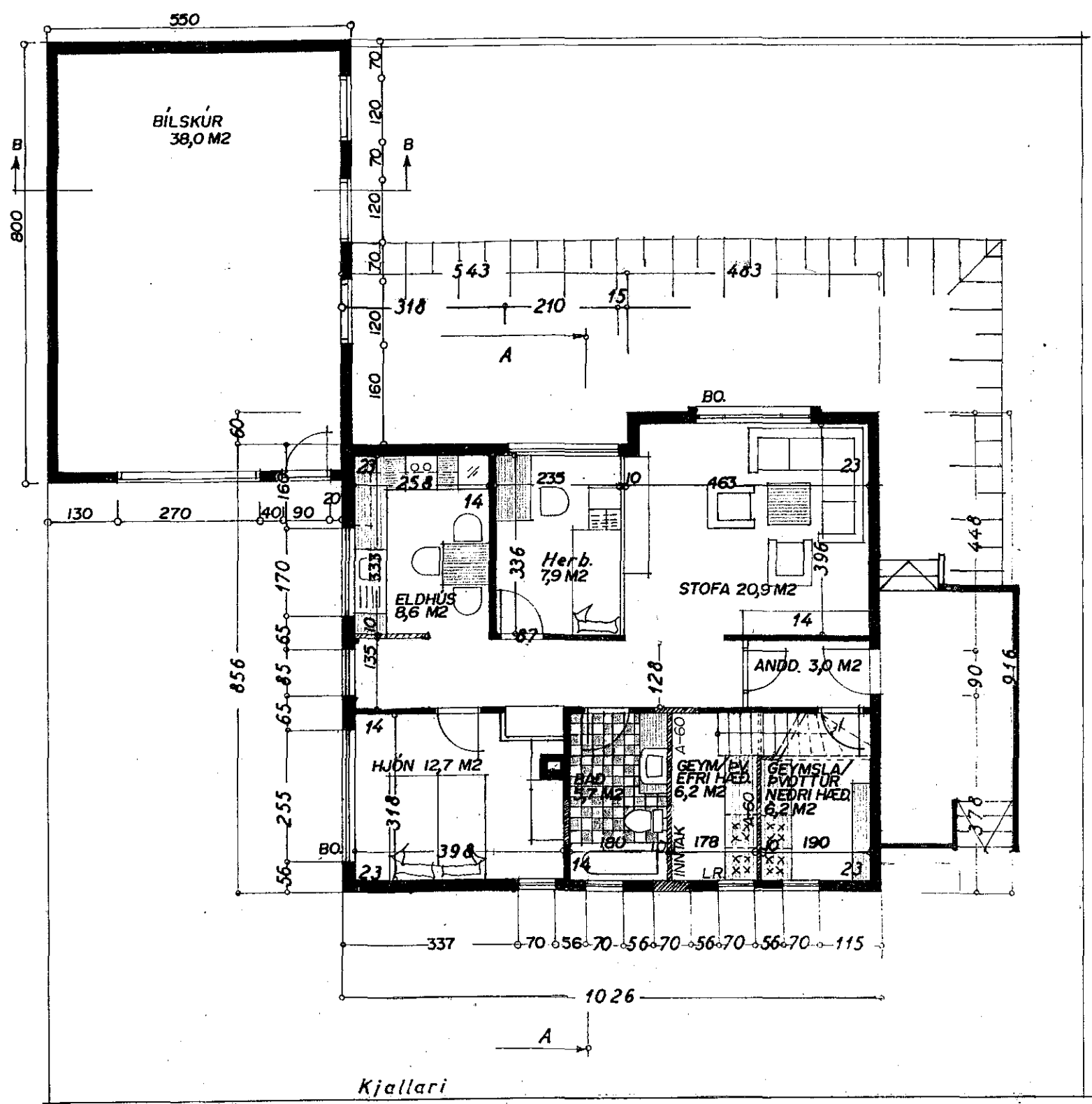
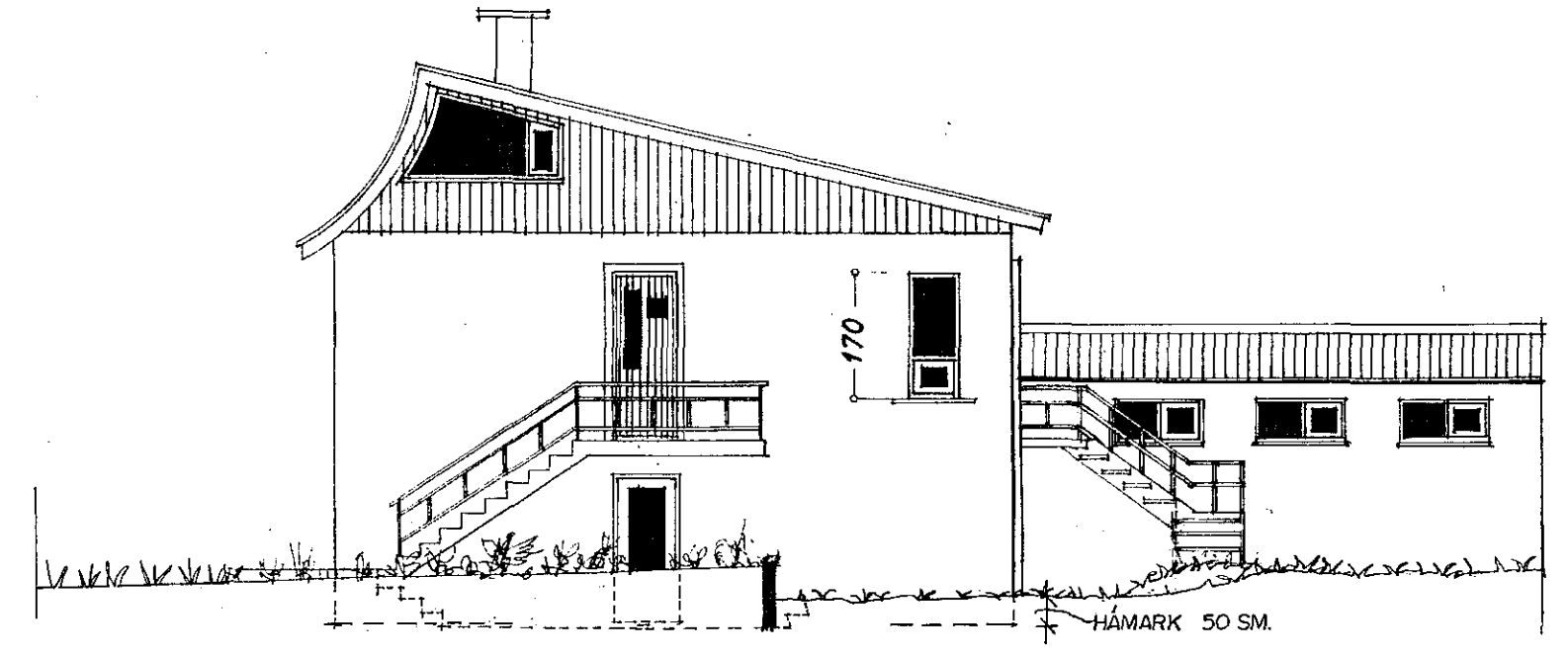
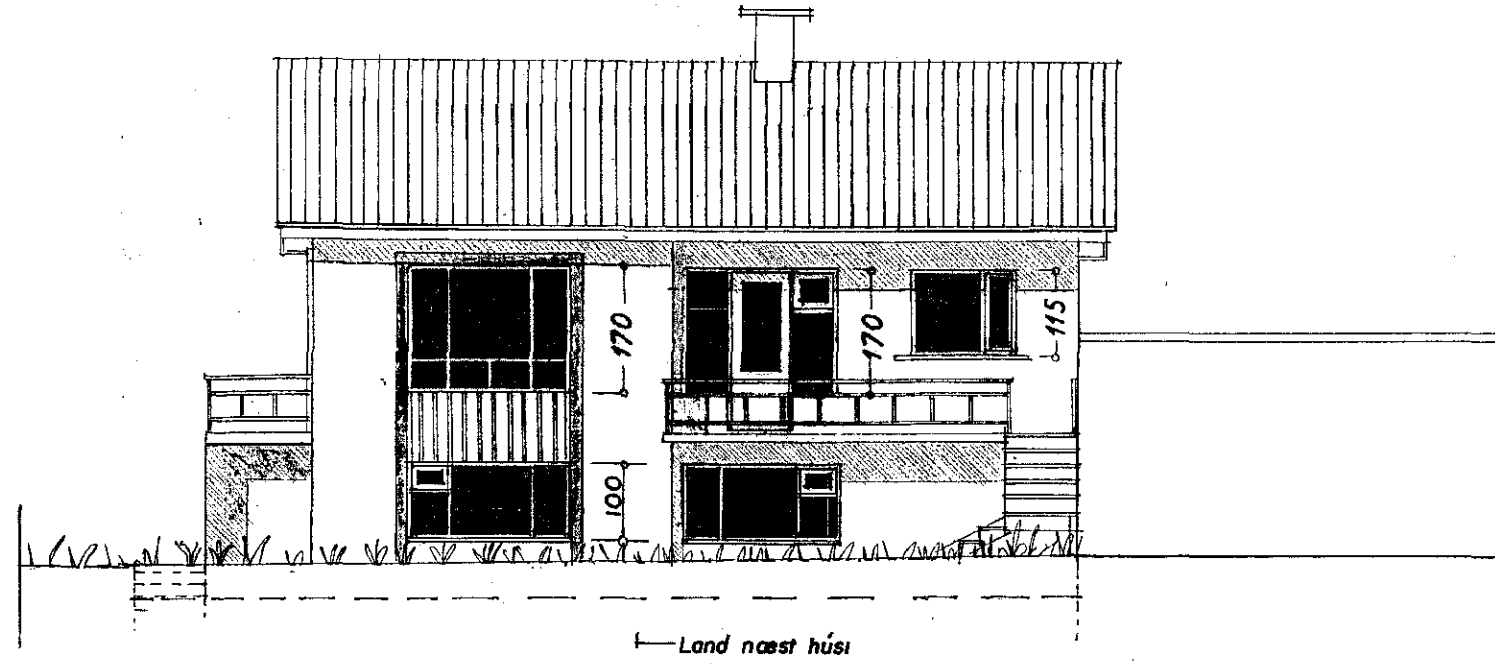
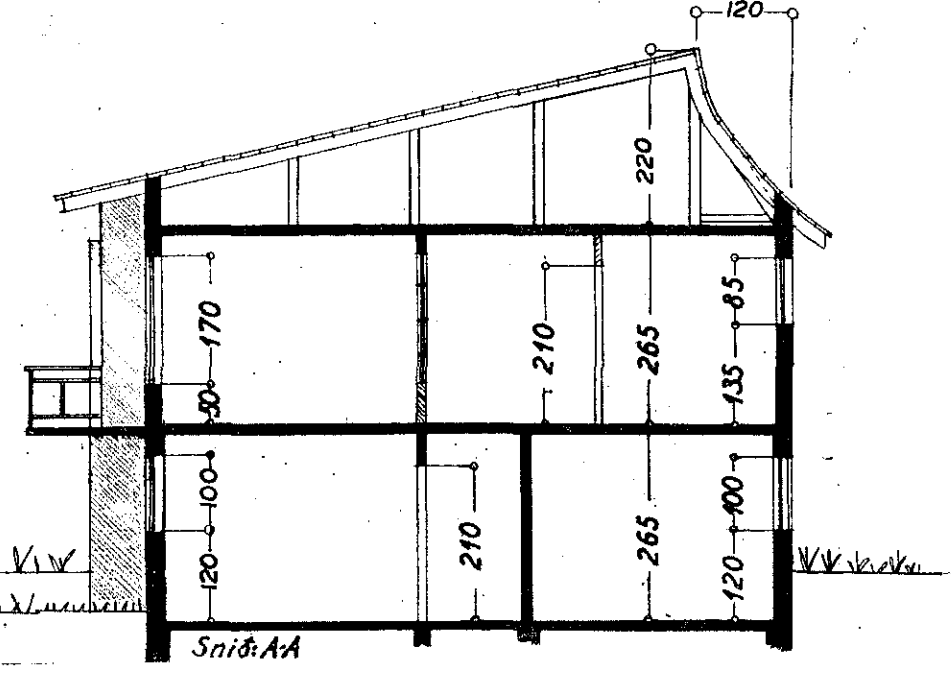
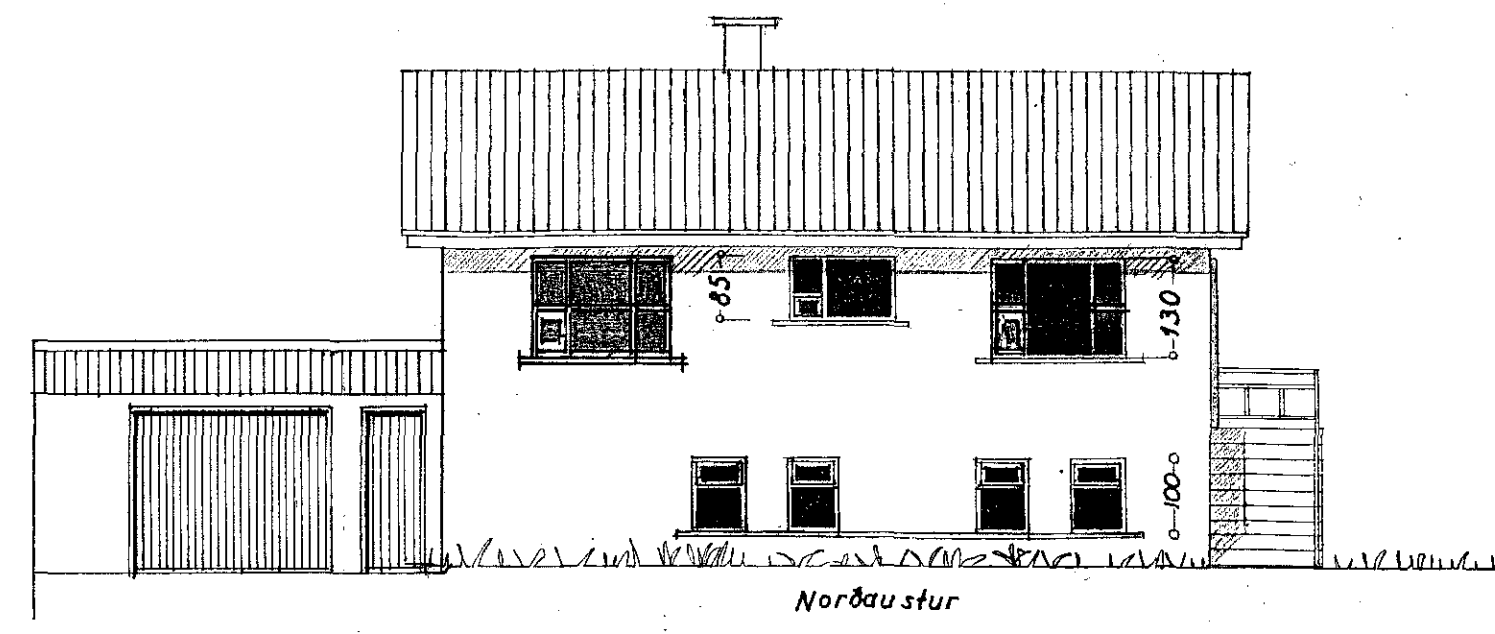
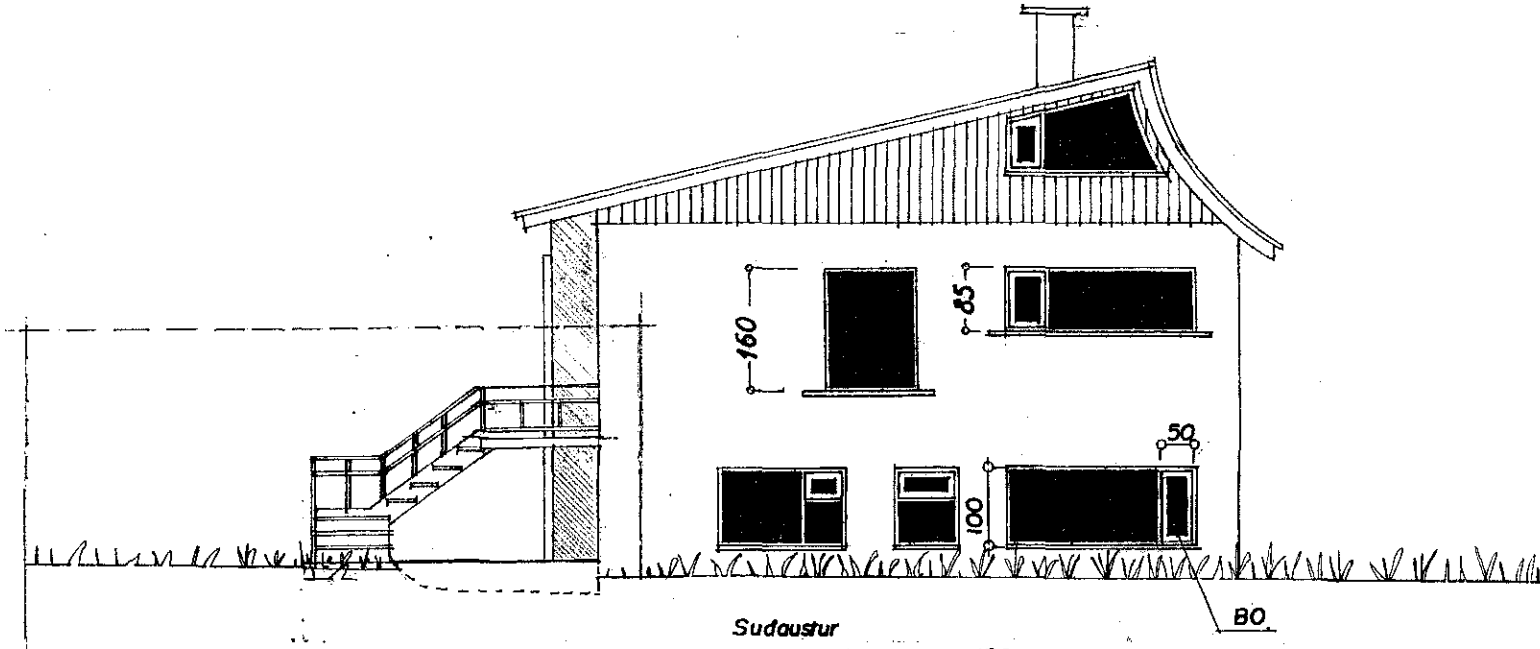


Samþykkt þann  
27. mars 2019  
Byggingafulltrúinn í Hafnarfirði



BYGGINGARLÝSING:

HÚSIÐ ER STAÐSTEYPT Á HEFÐBUNDINN HÁTT  
MEÐ STÁLKLÆDDU ÞAKI.

STÆRÐIR:

FLATARMÁL NEÐRI ÍBÚÐAR.	83,28 M <sup>2</sup> .
FLATARMÁL EFRRI ÍBÚÐAR	98,16 M <sup>2</sup> .
BÍLSKÚR EFRRI ÍBÚÐAR.	44,00 M <sup>2</sup> .
HEILDARFLATARMÁL EFRRI ÍBÚÐAR.	142,16 M <sup>2</sup> .
HEILDARFLATARMÁL HÚSSINS ER.	225,44 M <sup>2</sup> .

18. MARS 2019.  
GLUGGA BÆTT VIÐ Á  
I. HÆÐ NORÐAUSTURHLÍÐAR.

KJALLARA BREYTT Í APRÍL 1995 AF SIGURDI ÞORVARÐARSONI BYGGINGAFRÆÐINGI BFÍ.  
STRANDGÖTU 11 HAFNARFIRÐI SIMI 565 15 10  
BREYTT 11/95 SLP.

LÆKJARKINN 4 HAFNARFIRÐI  
HÚS TEIKNAD Í JÚLÍ 1955 AF FRÍÐJÓFI SIGURSSYNI.

20.03.2019.  
Liejð.