

Hús Sigurbjarnar Ágústssonar

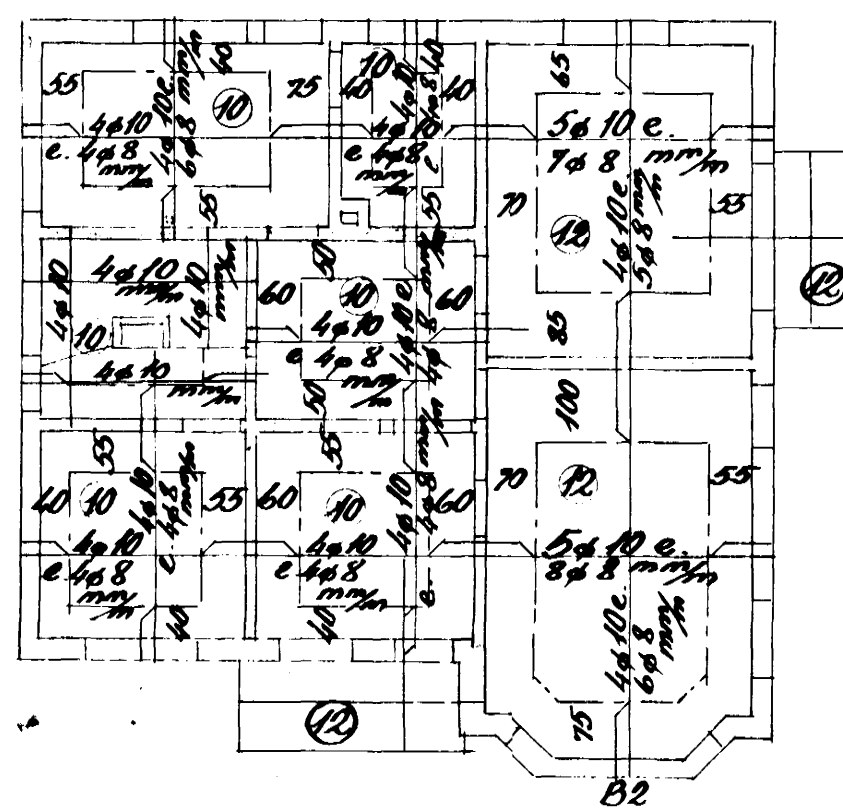
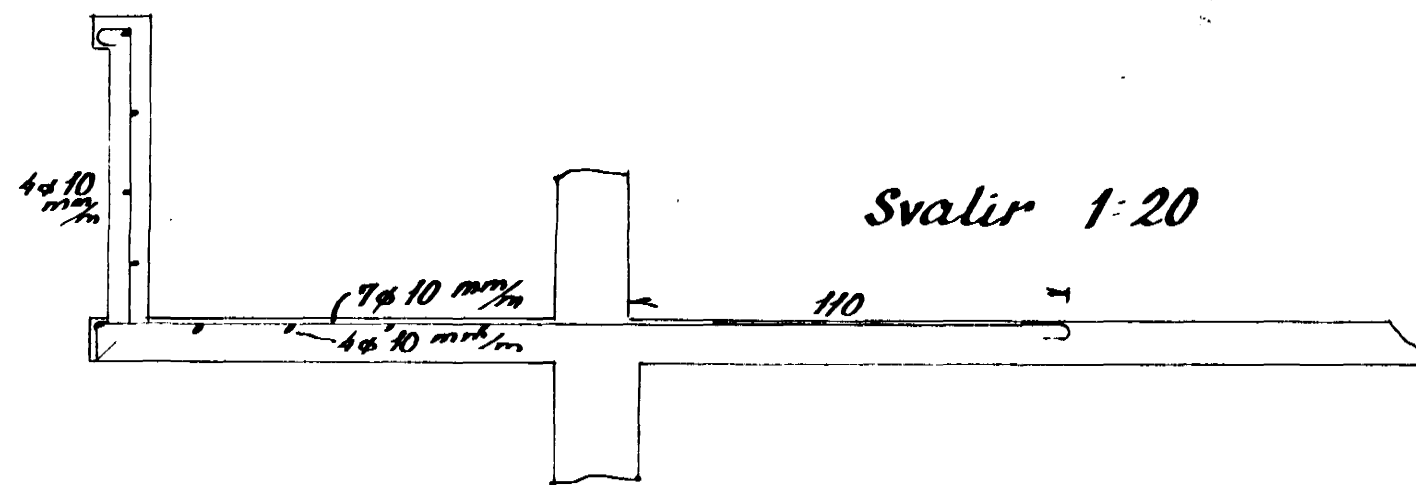
Birkilvammur 5

Járnhent sleypa

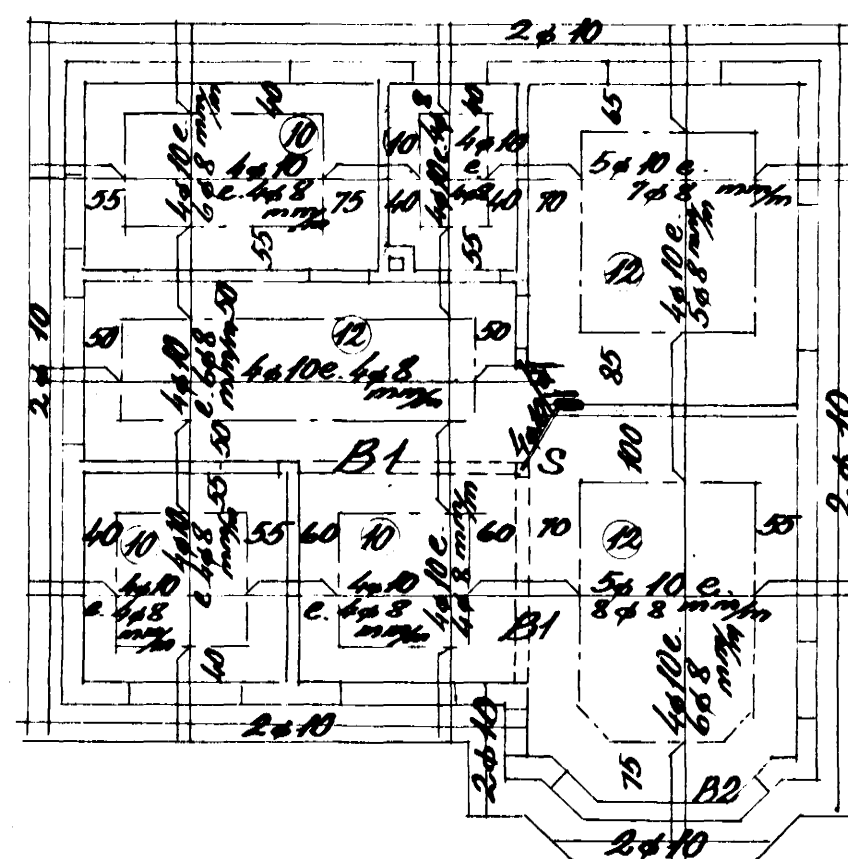
Blöndun sleypu 1:2:3

Yfir dyr og glugga komi 2 ϕ 10, nema haf $\geq 2,0$ m, þá komi

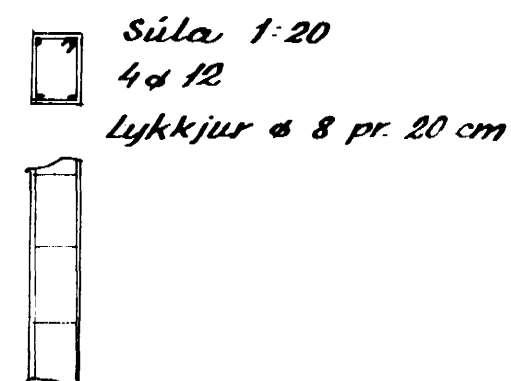
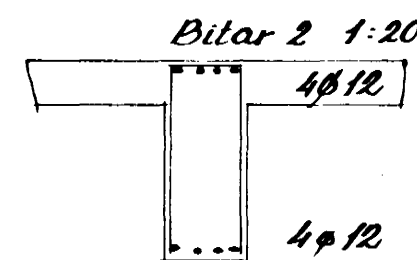
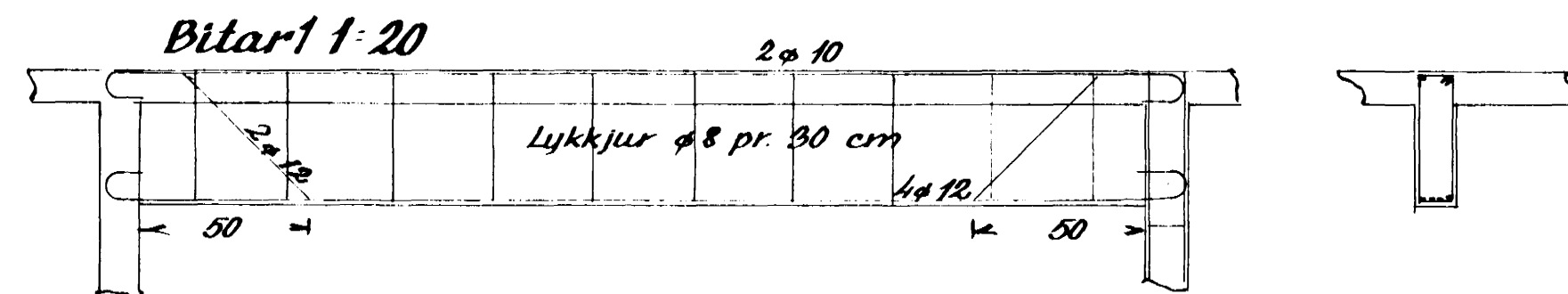
4 ϕ 10



Loft yfir kjallara 1:100



Loft yfir hæð 1:100



Hafnarfirði í ág. 1954

Sig. J. Ólafsson