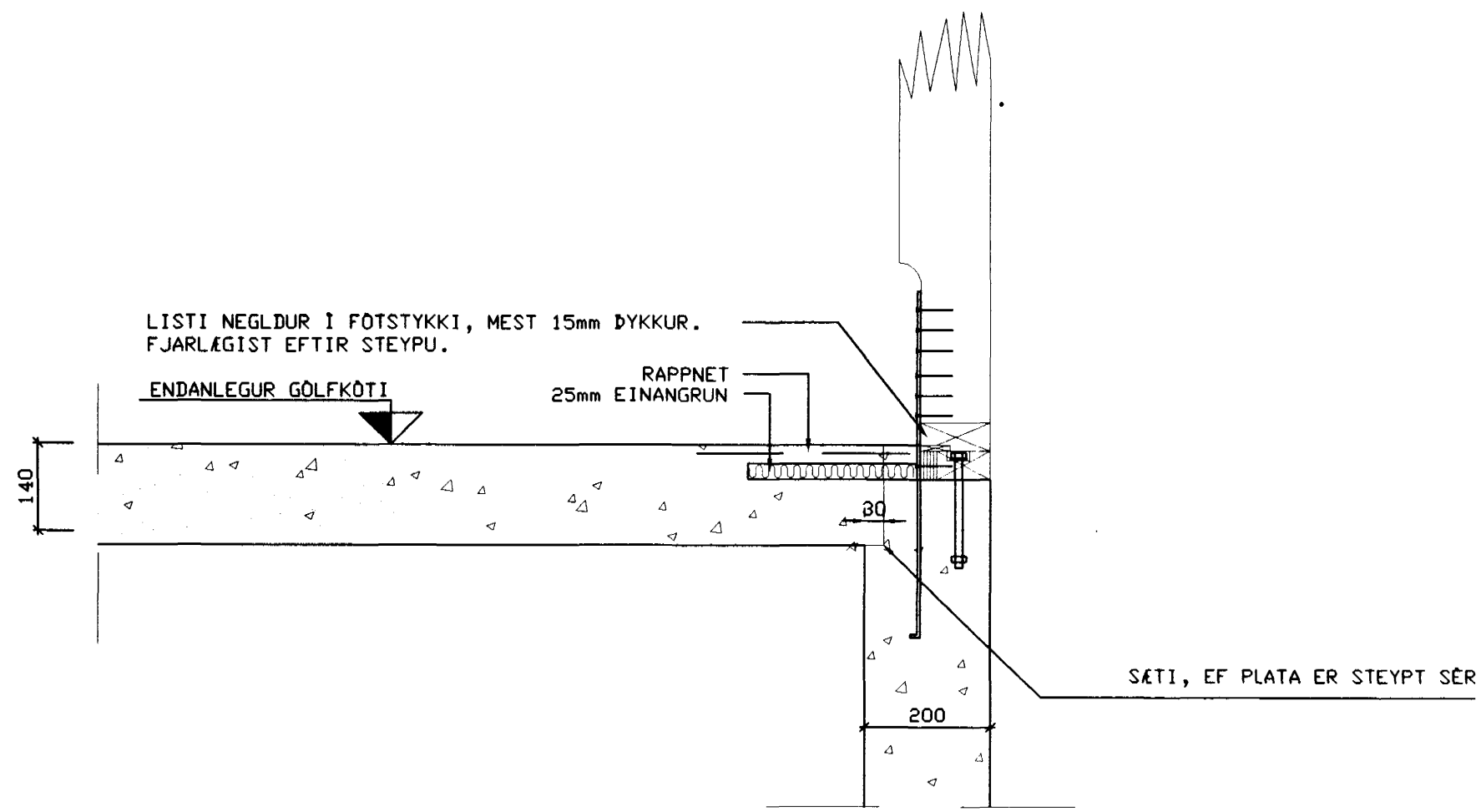
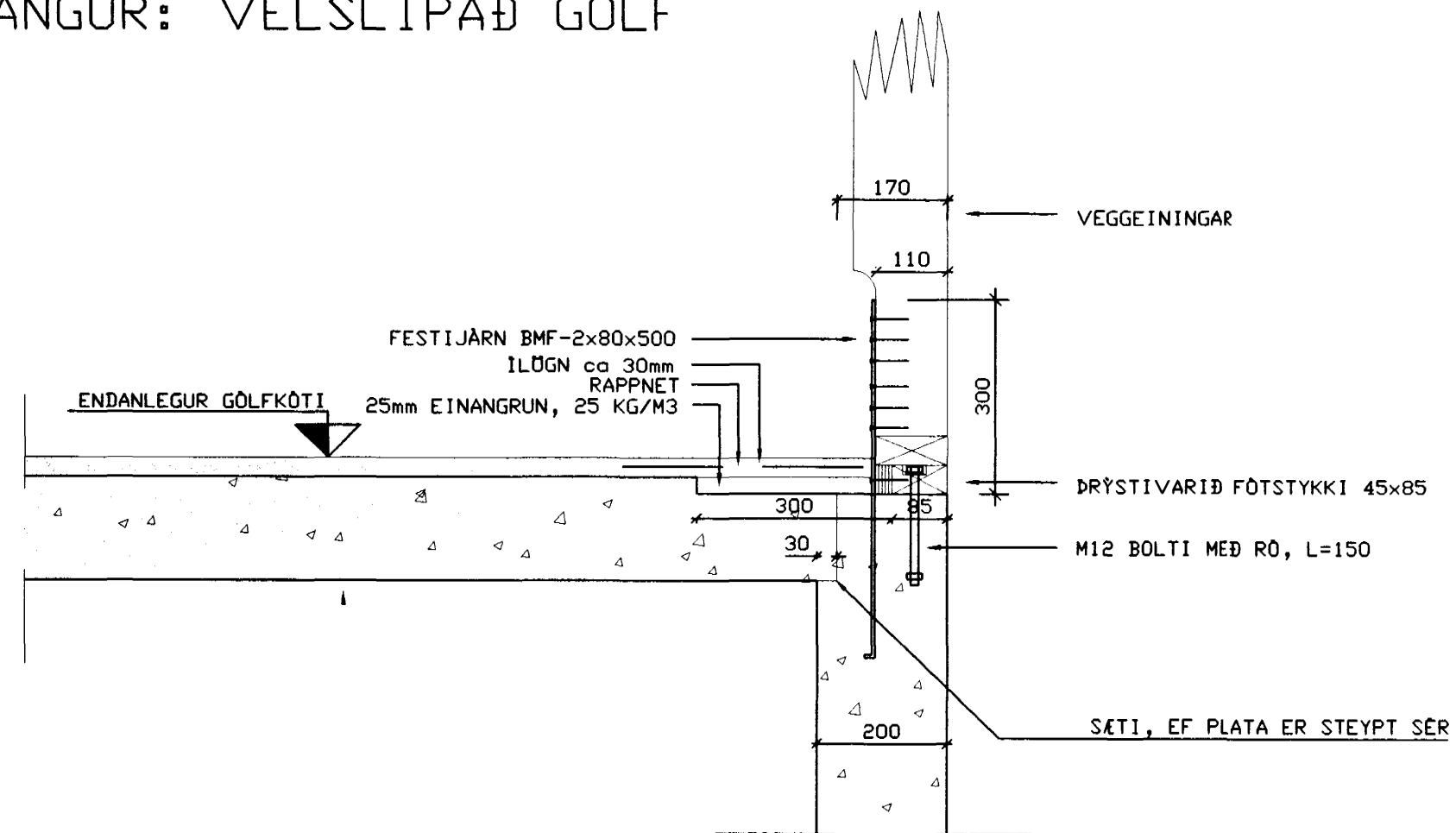


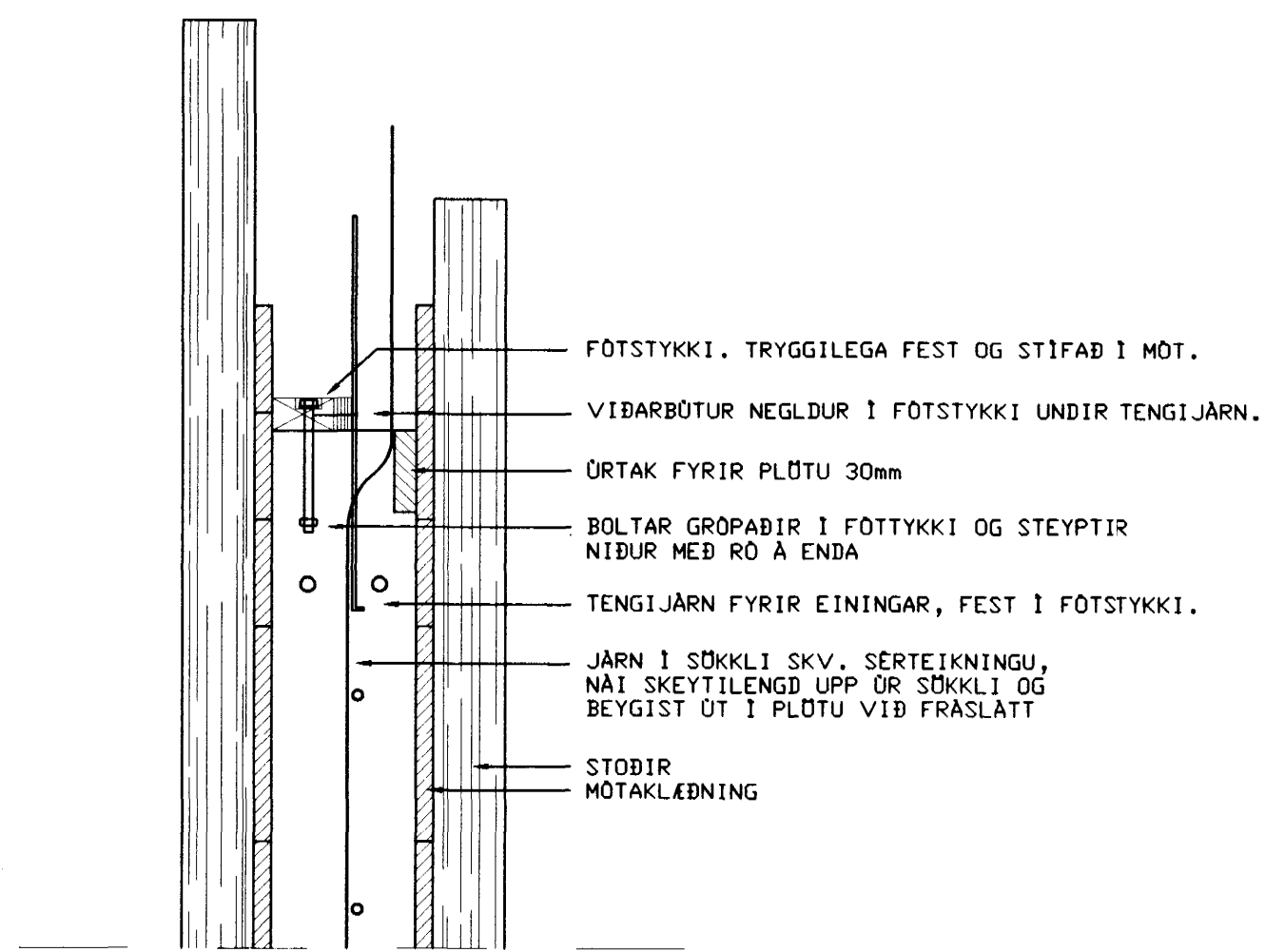
FRÁGANGUR: VÆLSLIPAD GÖLF



FRÁGANGUR: ÍLAGT GÖLF

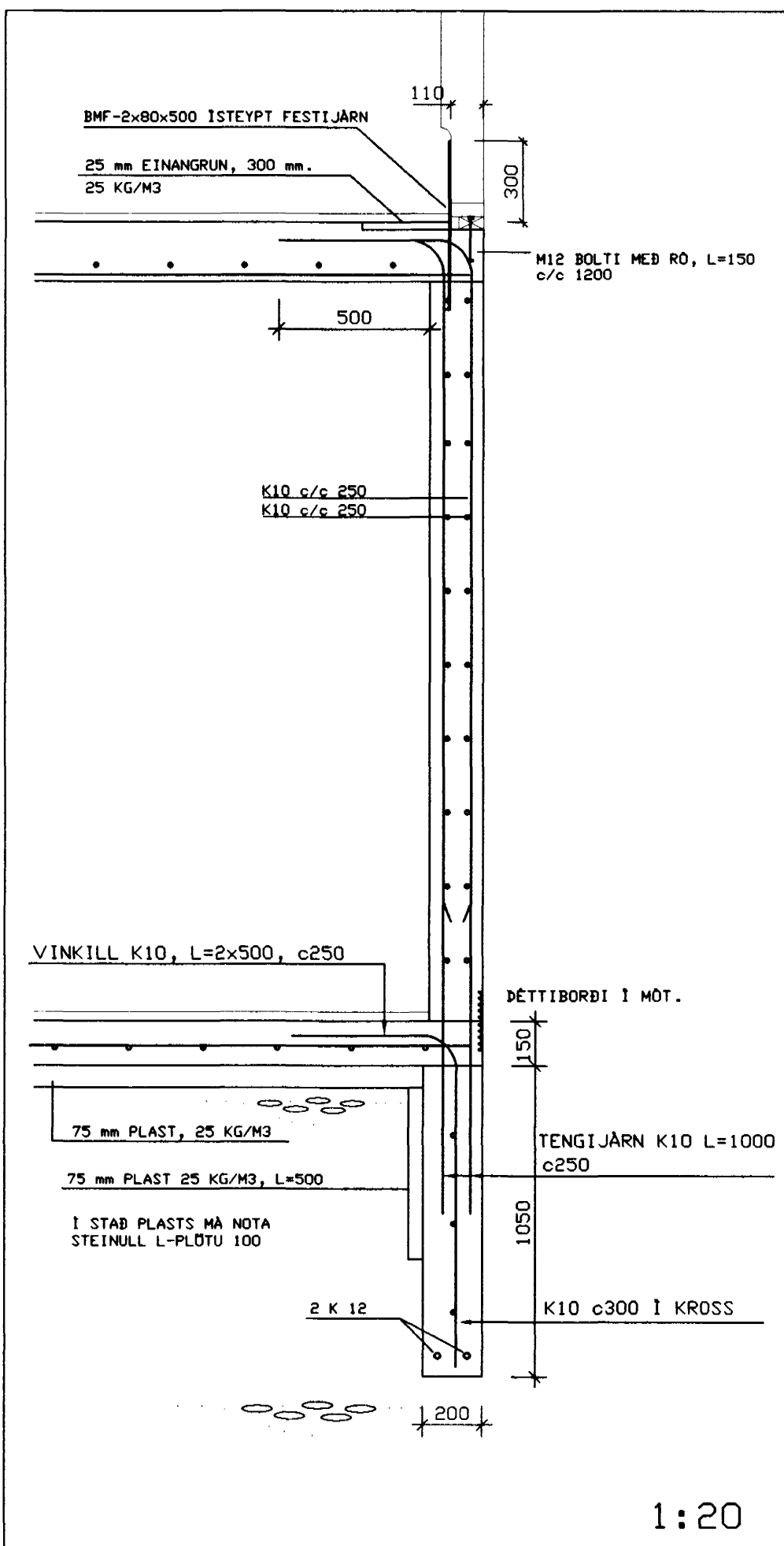


UPPSLÁTTUR

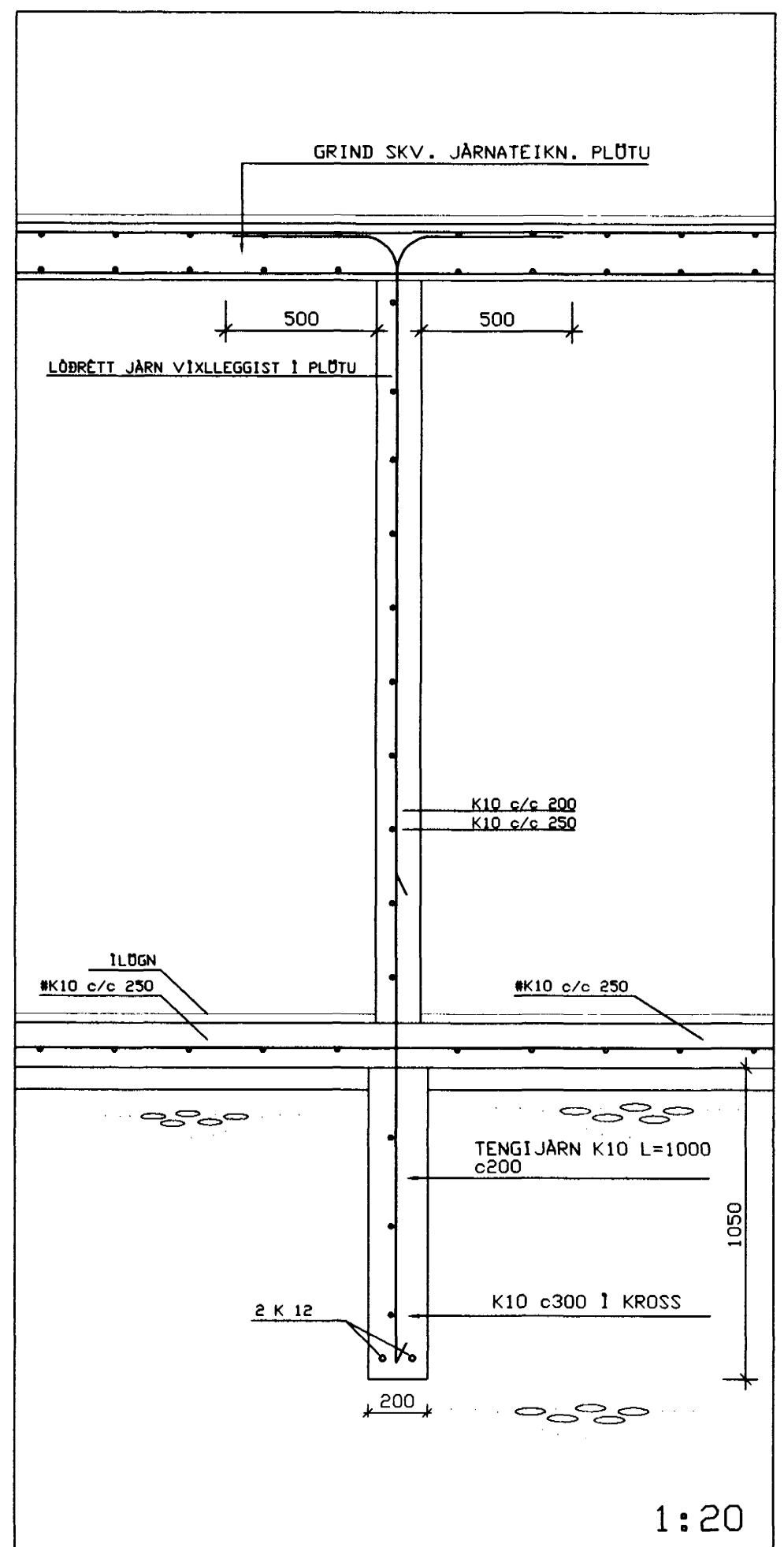


1:10

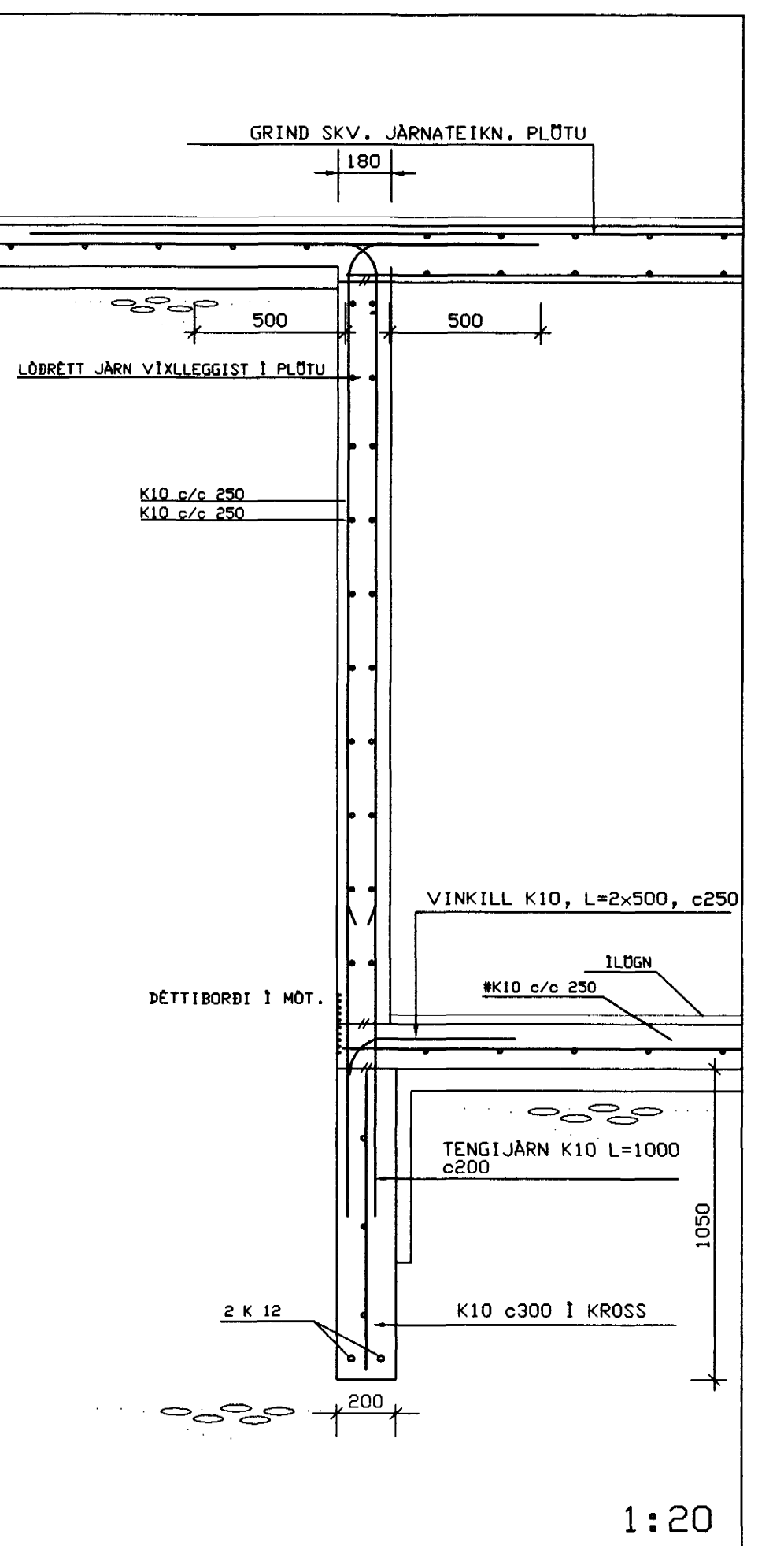
SÉRMYNDIR



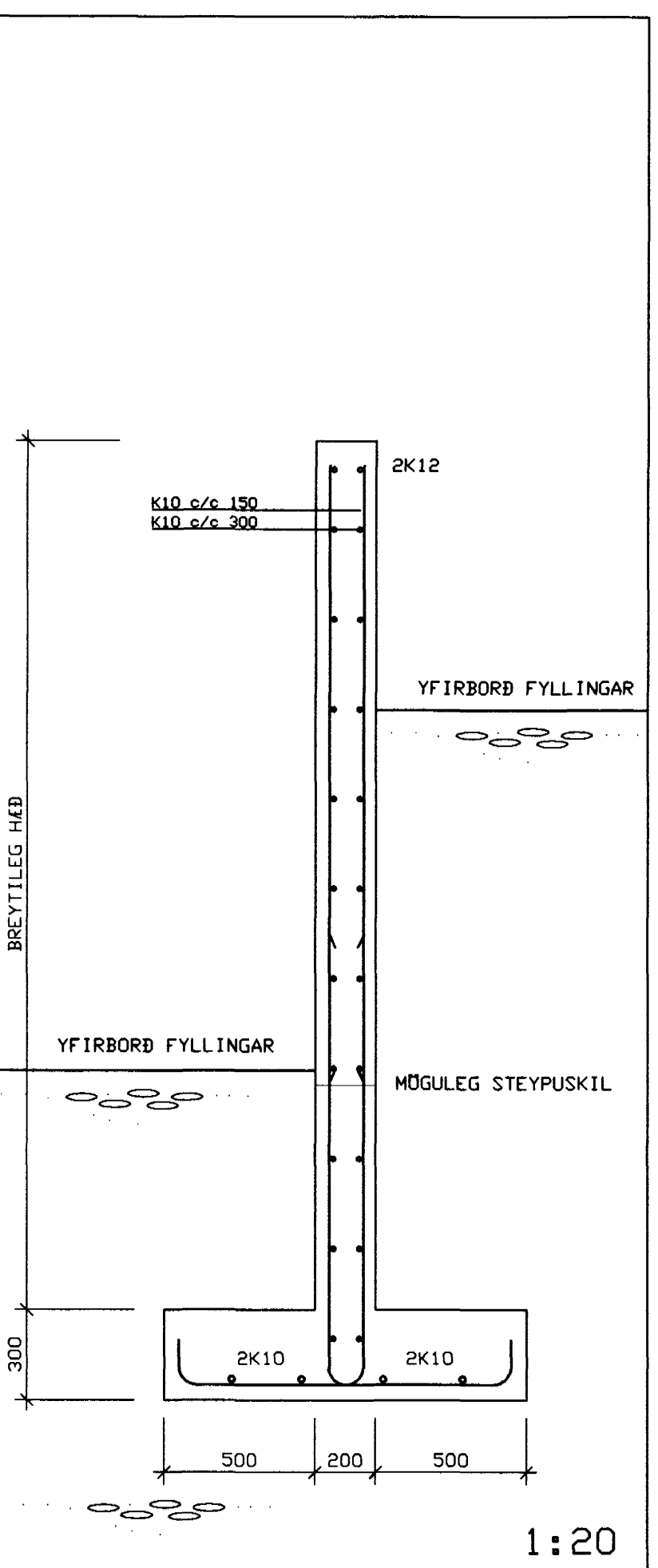
SNID A-A



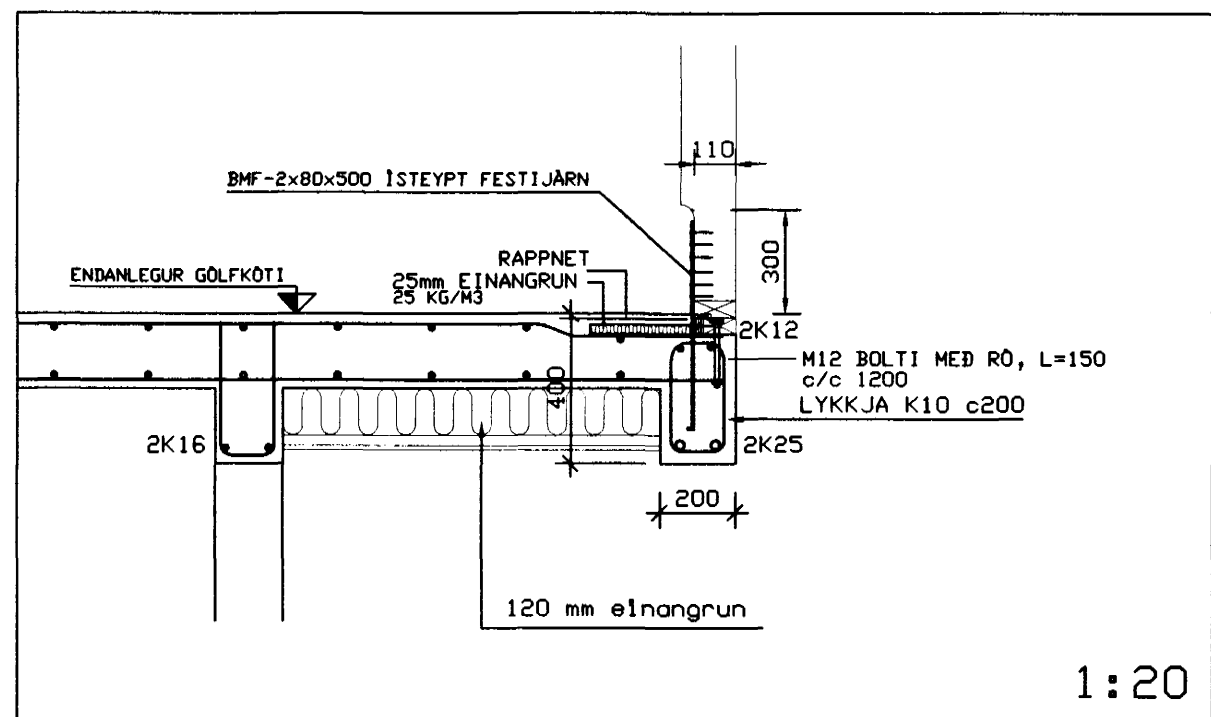
SNID B-B



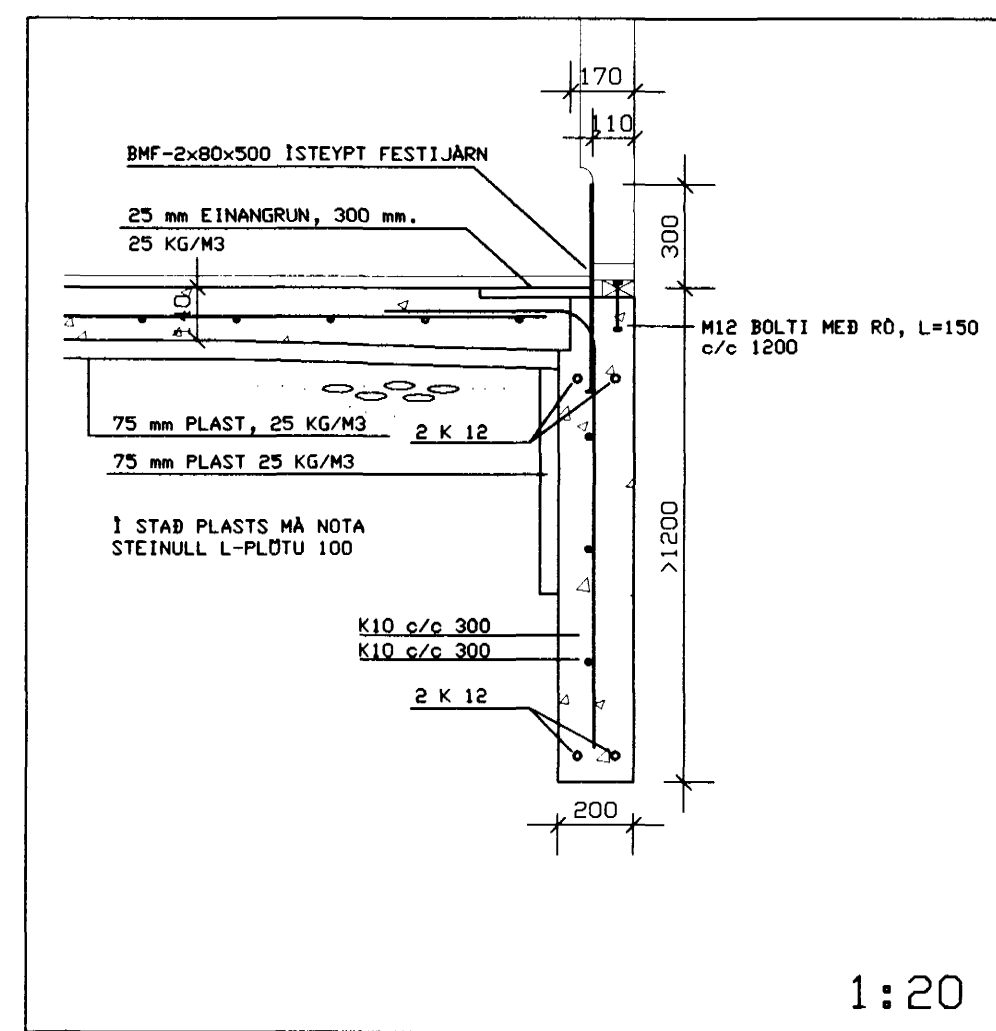
SNID C-C



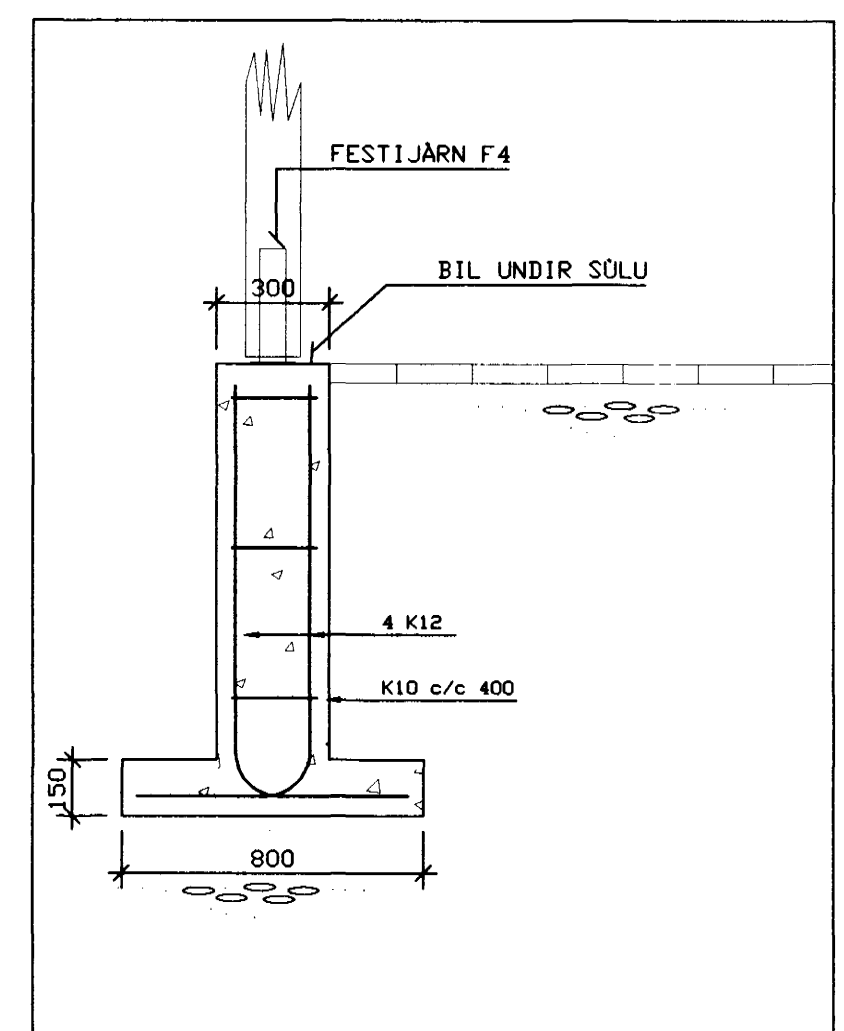
SNID D-D



SNID E-E



SNID F-F



SÜLA 1:20

SKÝRINGAR :

GRAFA SKAL FYRIR UNDIRSTÖÐUM NIÐUR Á HEILLEGAN BURÐARHEFAN BOTN. FÝLLA SKAL SVO Í MEÐ FROSTÖRUGGRI GRÖS, BLEYTA REKILEGA OG ÞJAPPA. ÞJÖPPUN UPFÝLLI EFTIRFARANÐI KRÖFUR: (MIBAD VIÐ PLÖTUÞRÖF).

E2 ≥ 100 MPa
E2/E1 ≥ 2,5

TIL VIÐMUNAR:

TÆKI:	LAGDYKKT	F.J.	YFIRF.
5.0 tn VIBRÓVALTARI	0.4 m	6	
0.5 tn VIBRÓPLATA	0.3 m	4	
0.3 tn VIBRÓPLATA	0.2 m	4	

LEIKI VAFI Á BURÐARGETU FÝLLINGAR SKAL PRÓFA FÝLLINGU.

STEINSTEYPA:

STEYPA ER S250 MEÐ 300 KG SEMENT Í HVERJUM RÖMMEÐRA, NEMA Í GÖLFPLÖTU, S200.

V/S-TALA : < 0,55

LOFTINNIHALD STEYPU : 5-7 %

SIGMÁL STEYPU : 50 - 80 mm

TITRA SKAL ALLA STEYPU.

MINNSTA STEYPUHJALA:

-SÖKKLAR 30 mm

STÁLGEBI:

K - KAMBSTÁL Fyk = 410 Mpa
R - SLETT STÁL Fyk = 235 Mpa

Ka MERKIR SUBUHÆFT KAMBSTÁL Ka40S

KAMBSTÁL BEYGIST UM HJÖLASKIFU SEM ER 20 SINNUM ÞVERMÁL STANGARINNAR.

SUBUHÆFT KAMBSTÁL, MERKT Ka, MÁ ÞÓ BEYGJA UM HJÖLASKIFU SEM ER 8 SINNUM ÞVERMÁL STANGARINNAR.

SKEYTILENGD KAMBSTÁLS ER 40*d, Þ.E. 40 * ÞVERMÁL STANGAR.

LARÉTT JÄRN SEM KOMA Í HORN EÐA ÞVERVEGG SKAL BEYGJA SKEYTILENGD FYRIR HORN.

MÁL ERU Í mm NEMA ANNARS SE GETIÐ.

HÖNNUNARFORSENDUR:

SNJÖR: -ALAGSSVÆÐI 1 1.0 KN/m²

VINDUR: -2=6.000 m 1.4 KN/m²

NOTALAG: -GÖLFPLATA Í IÐARH. 1.5 KN/m²

EIGINDYNGD:

-ÞAK 0.6 KN/m²

-STEYPA 25 KN/m²

-ÓTVEGGIR 1.0 KN/m²

-INNVEGGIR 0.5 KN/m²

08 JULI 1997

HAFNARFJÖRÐUR BYGGINGAFLUTRUI

01	5/6/97	Ein.undir svallr			
NR:	DAGS	BREYTING	AF	SAMB:	<i>Andr. Þ. Sigf.</i>
VERKFRÆÐISTOFA SUÐURLANDS EHF.			BLAÐ:	162	
AUSTURVÖGN 3-6, 800 SELÞOBS 8-682-3000			KVARN:	1:10/1:20	
BJARMAHLIÐ 10			NEÐR:	GDS	
HAFNARFJÖRÐUR			TEÐR:	GDS	
BURÐARVIRKI - STEYPT			DAGS:	10.2.97	
SNID Í PLÖTUR OG VEGGI			NR:	96130B	