

DEILI Ö. Rennih.með snerli.

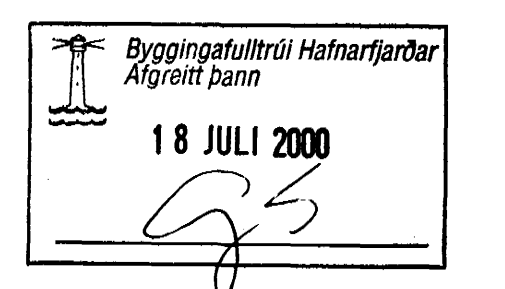
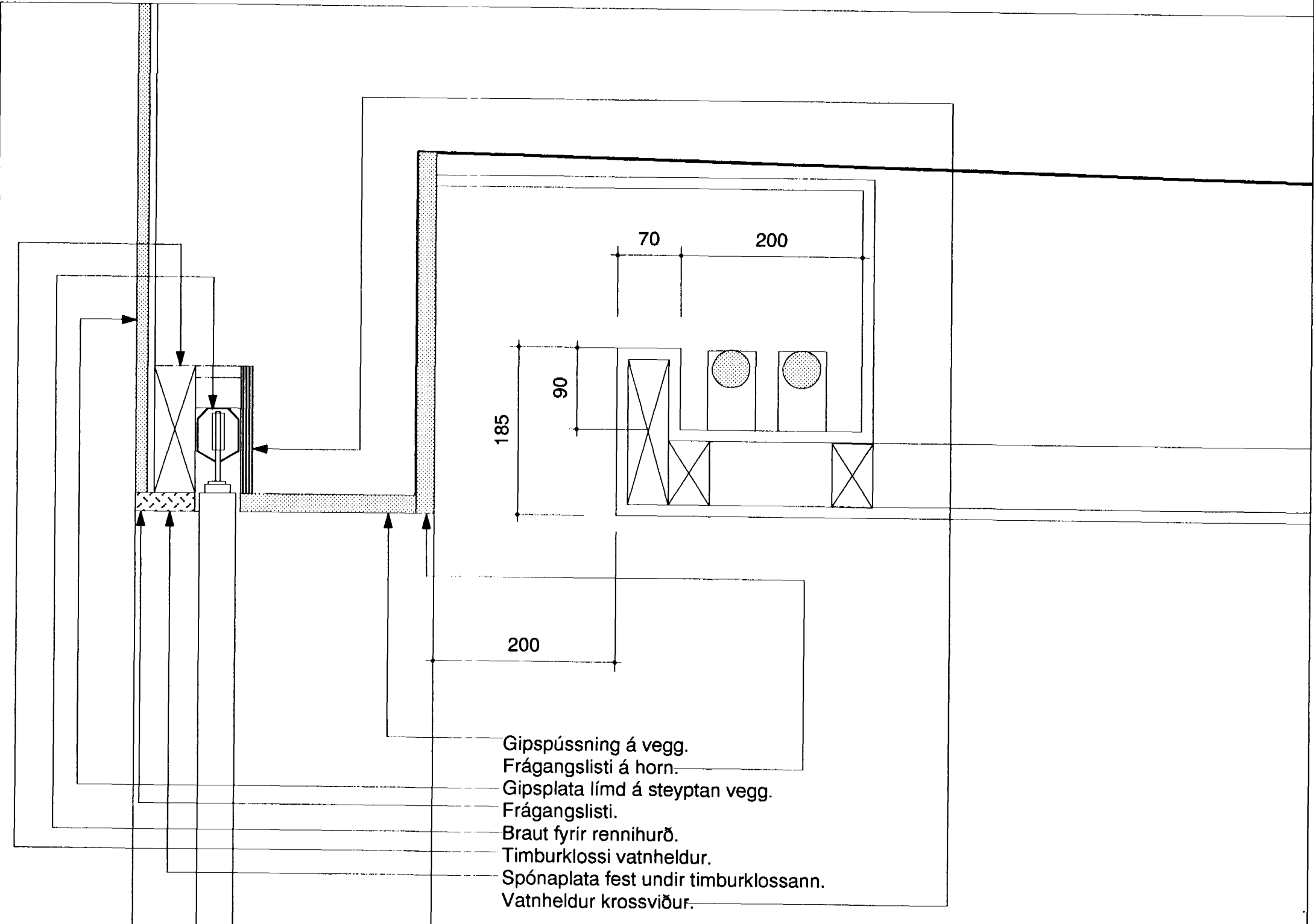
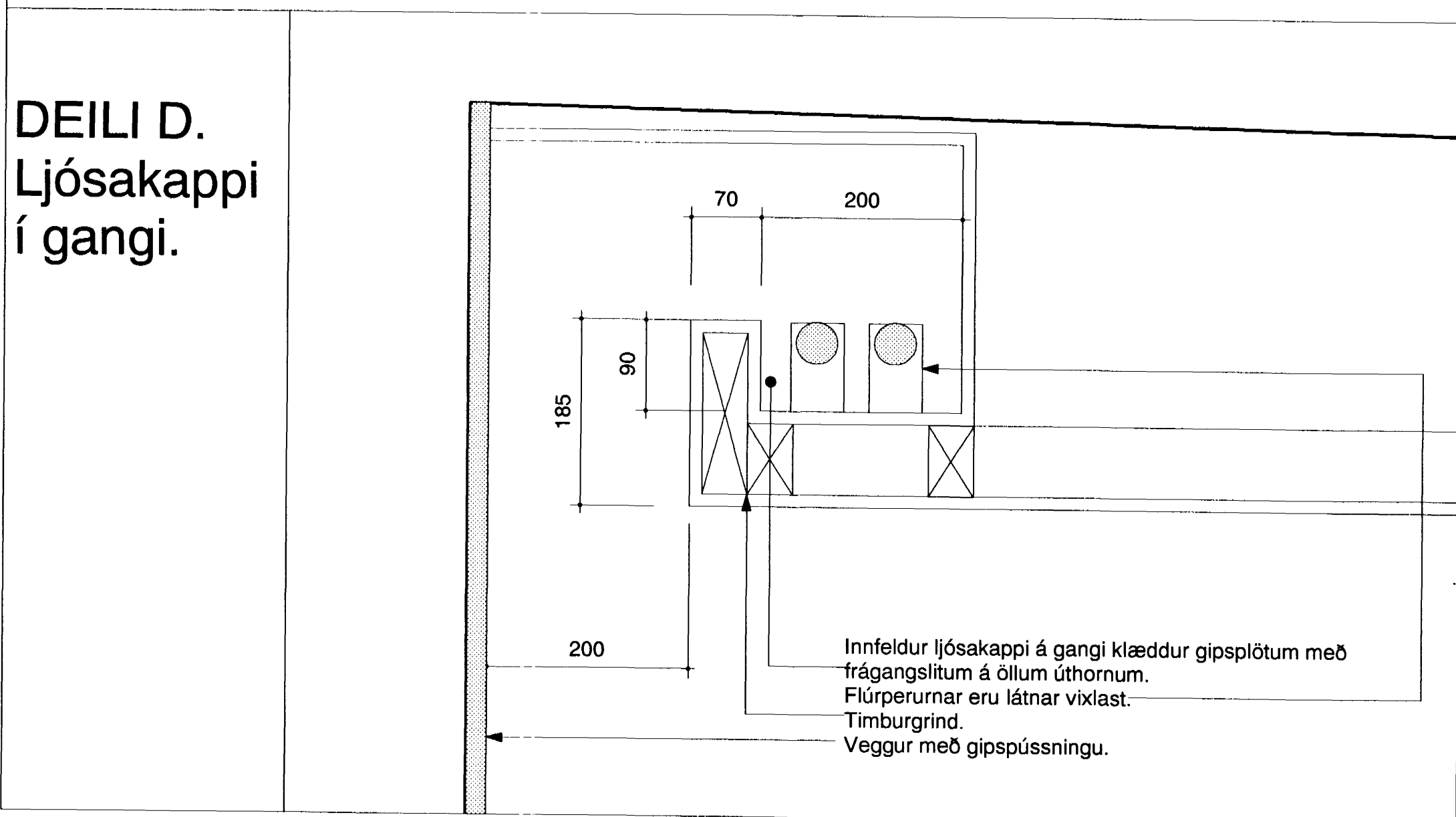
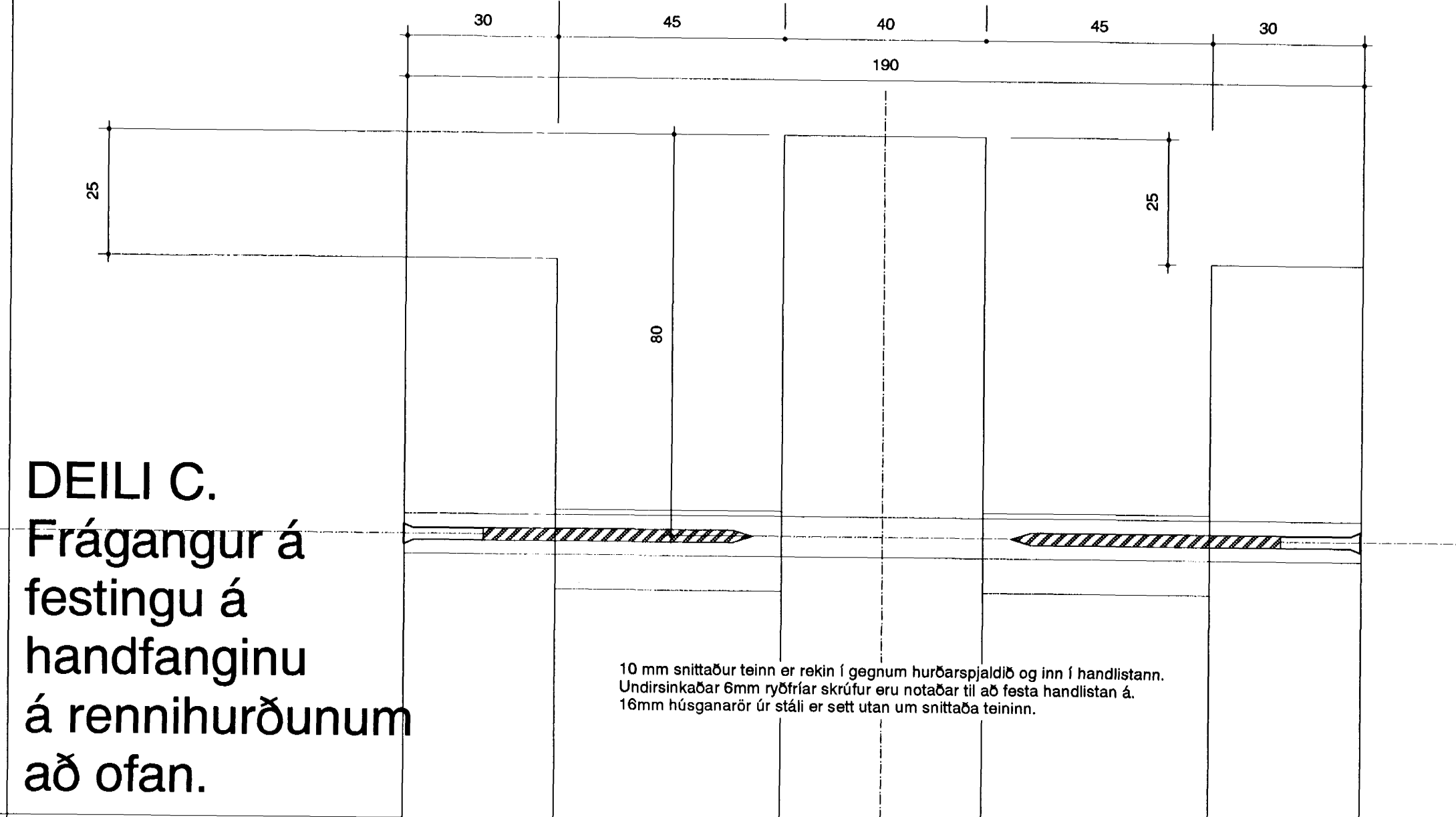
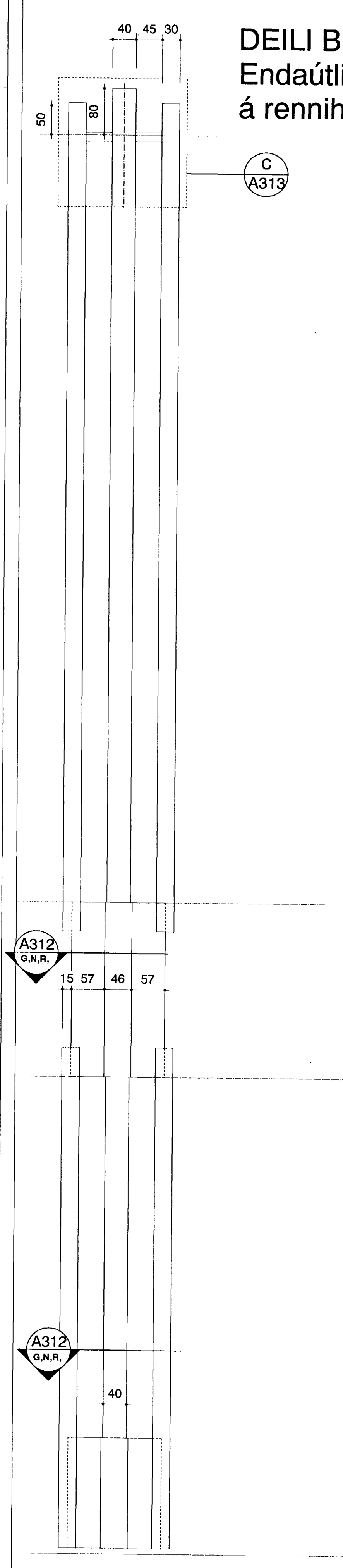
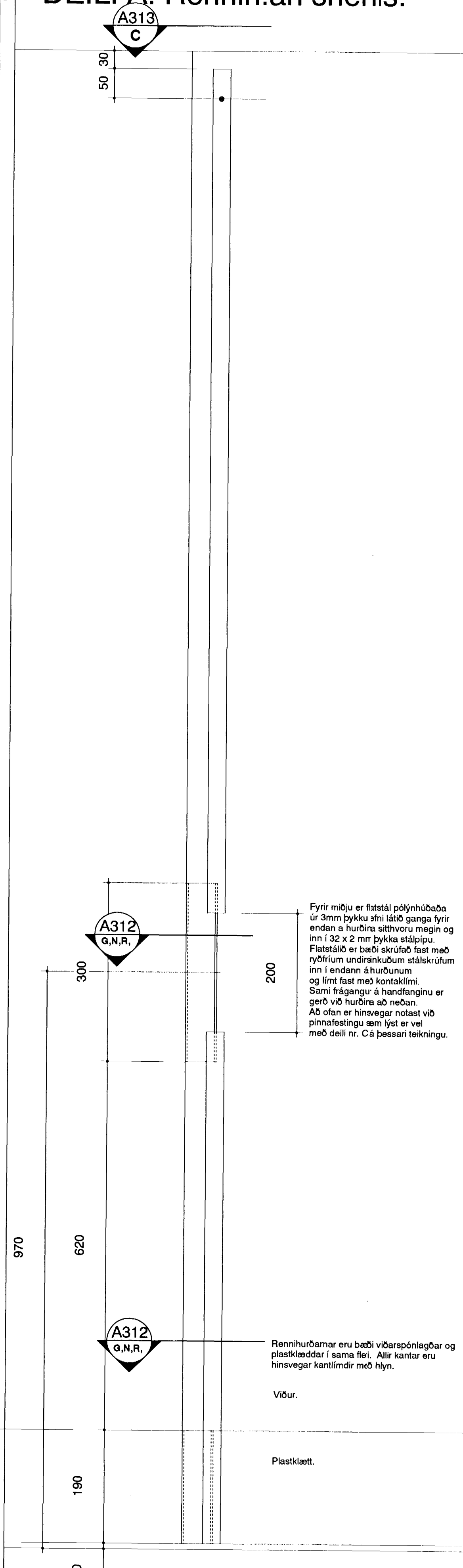
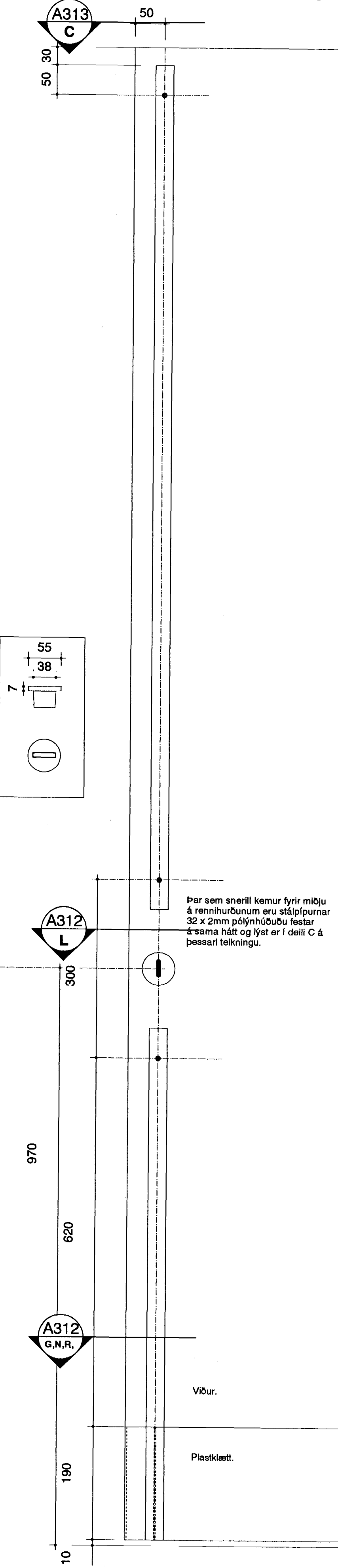
DEILI A. Rennih.án snerils.

DEILI B. Endaútlit á rennihurð.

DEILI C. Frágangur á festingu á handfanginu á rennihurðunum að ofan.

DEILI D. Ljósakappi í gangi.

DEILI E. Ljósakappi í gangi við rennihurð.



verk: SAMBÝLI AÐ BLIKAÁSI 1, HAFNARFIRDI  
 verkkaupi: FÉLAGSMÁLARÁÐUNEYTI  
 umsjón: FRAMKVÆMDASÝSLA RÍKISINS  
 teikning: DEILI  
 mkv: 1:1 OG 1:5  
 dags.: 9.JÚLÍ 2000

YRKI sf **Arkitektar**  
 Hringbraut 121  
 107 Reykjavík  
 sími 5526629  
 fax 5526649  
 netfang yrki@islandia.is  
 Ásdís H Ágúsdóttir Arkitekt FAÍ  
 Sólveig Berg Björnsdóttir Arkitekt FAÍ