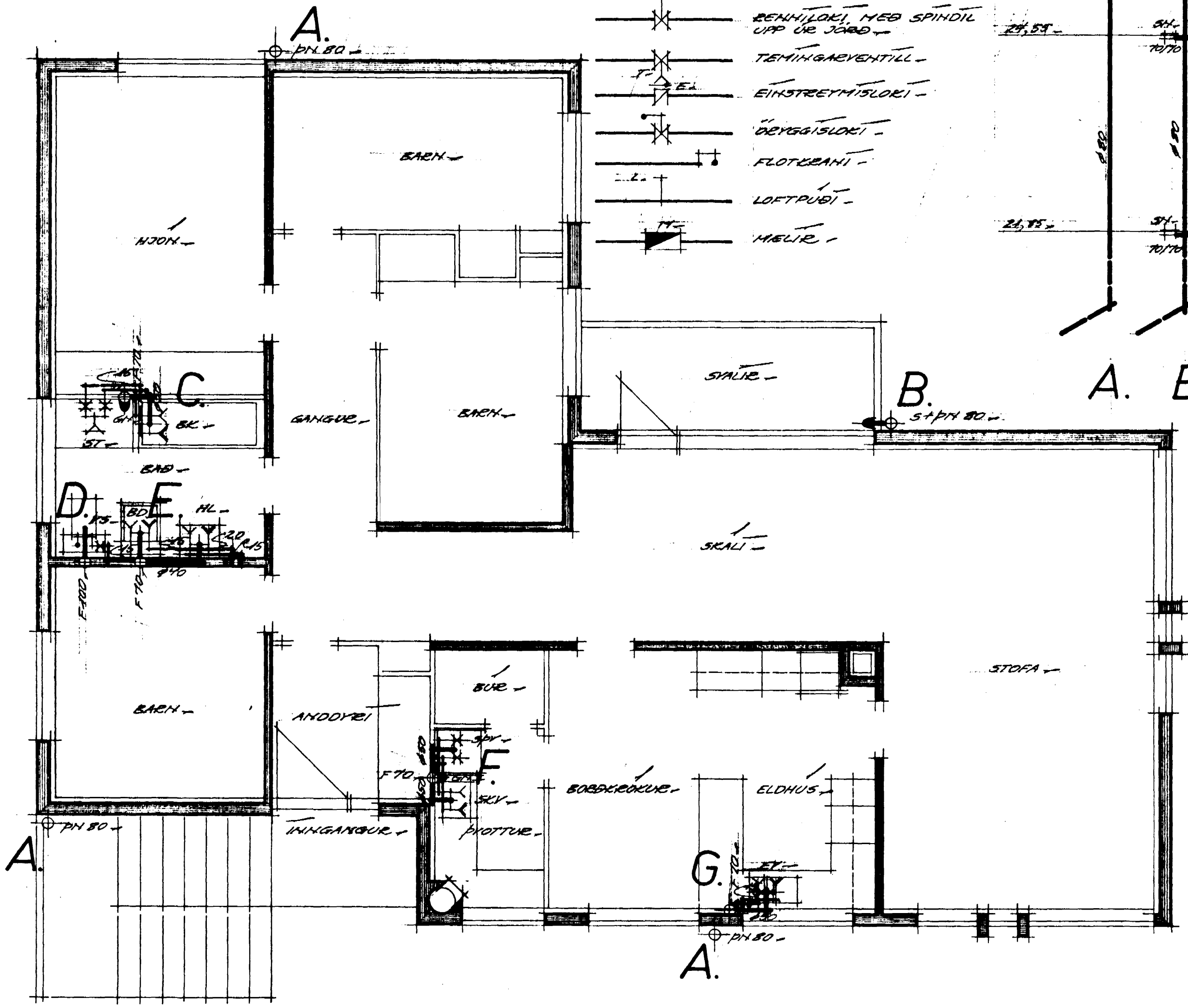
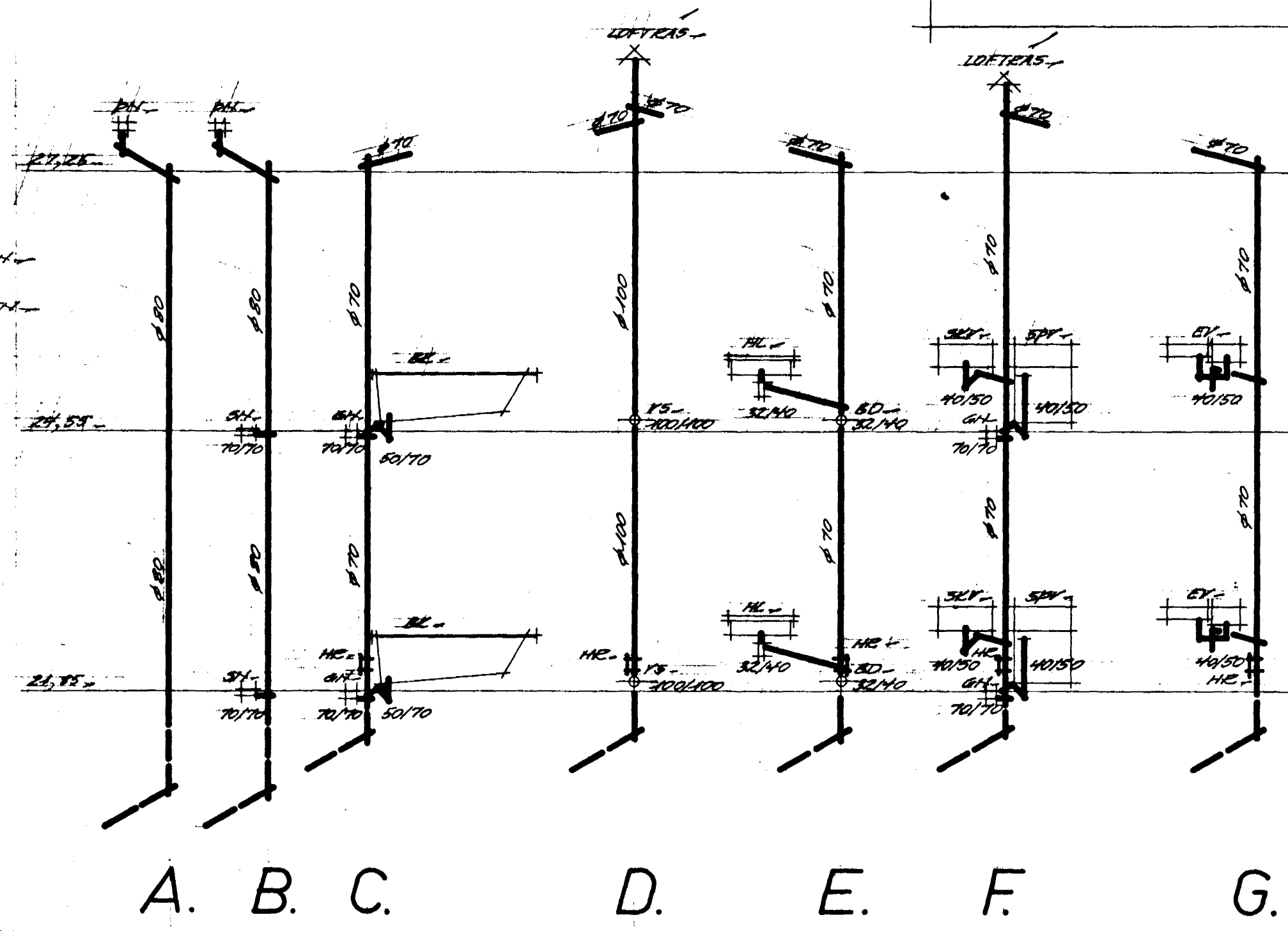


BLÓMVANGUR 16.

HAFNARFJÖÐI

SKYRINGAR

- KALT VATH ————
- HEITT VATH 2. HED ————
- HEITT VATH 1. HED ————
- TÖPPUNARSTADUR KALT VATH ———
- TÖPPUNARSTADUR HEITT VATH ———
- X— BENNLOKI ————
- X— BENNLOKI, MEG SPINDIL UPP ÚR JÖRD ————
- X— TÆMINGARVENTILL ————
- X— EINHSTRÆYMISLOKI ————
- X— ÖRYGGISLOKI ————
- X— FLOTURANI ————
- X— LOFTPUSI ————
- X— MELIR ————

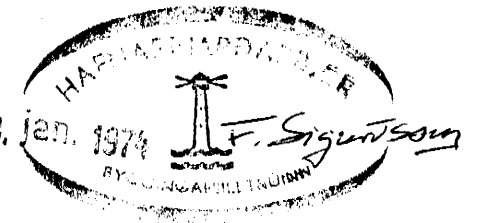


MEKINGAR

- SPV — MEREIE
- SKV —
- EY —
- HL —
- V3 —
- BL —
- BD —
- SH —
- GH —
- L —
- HE —

- SKALVEG ÞVOTTAVEL
- SKOLVASKUR
- ELDHUSVASKUR
- HANDLAUG
- VATHSSALEBHI
- BADKAR
- SKOLSKAL
- SVANABURFALL
- ÞACHIBURFALL
- GOLFHIBURFALL
- LOFTAS
- HBEIHSILUGA

EFNI OG FRÁGANGUR LAGNA SE Í SAMBETHI VÍÐ REGLUGERÐI



GRUNNHYFND 1. OG 2. HEDAR

BLÓMVANGUR 16. HAFNARFJÖÐI

HUSHÉÐISTEIGNISTOFAN SUDURLANDSBEAUT 20

FRÁREHNSLIS- OG VATHSLAGHTI	SÍMI 36840	VERK
GRUNNHYFND 1. OG 2. HEDAR OG FRÁREHNSLISSTOFNAR	MKV- 1:50	T. 0010.
	1973	

Björgvin P. Halmarsson
Sigurður P. Kristjánsson