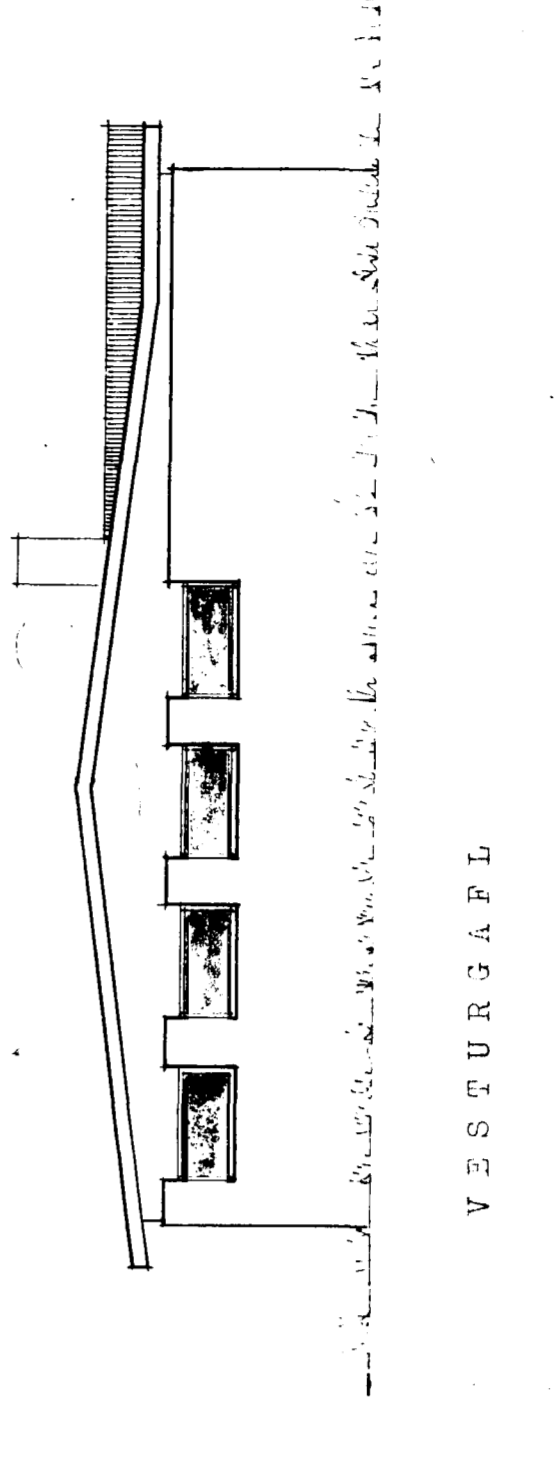
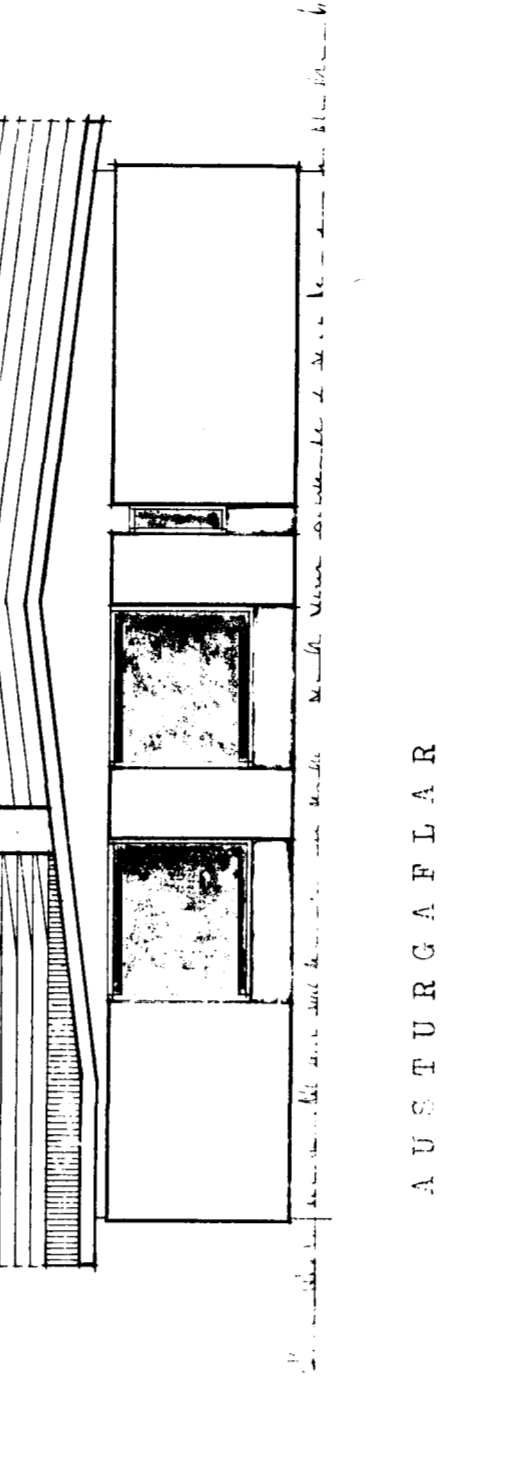
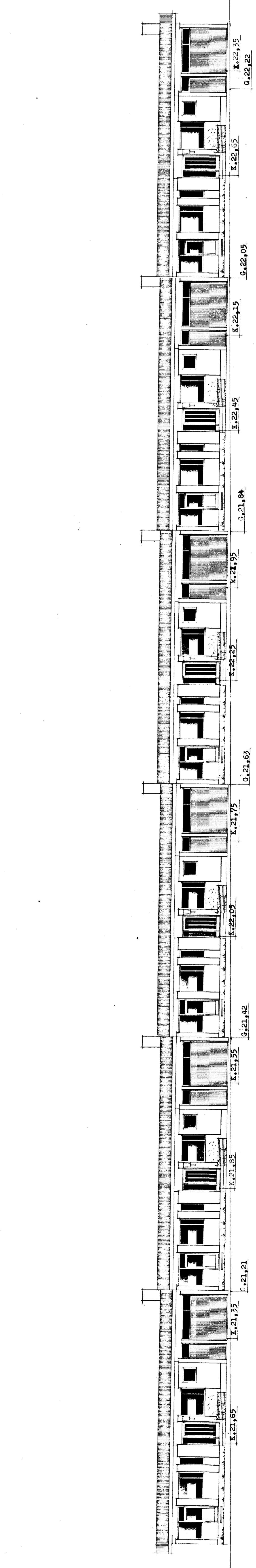
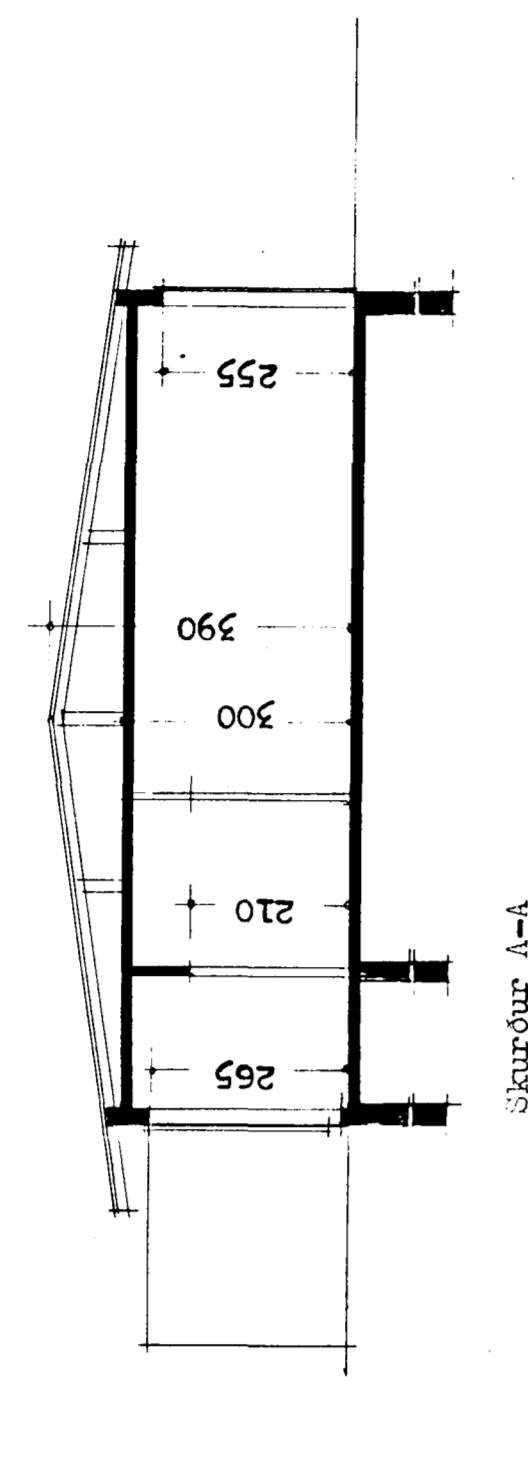
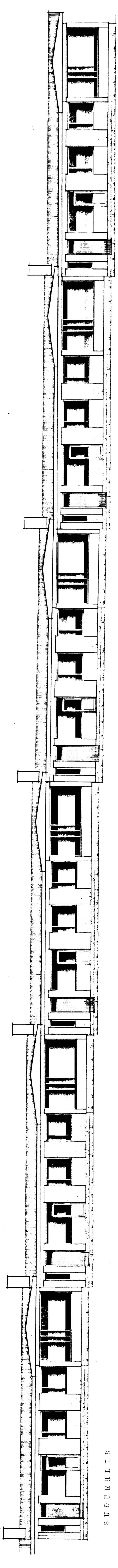


23  
 BREIÐVANGUR NR. 15-17-19-21-25  
 HAFNARFIRDI M. 1:100

Samþykkt á fundi Bygginga-  
 nefndar B. 27. 6. 1973  
 S. H. HANSSON  
 Sýslu Stjórnandi



Reykjavík í júní 1973  
 Skurður C-C