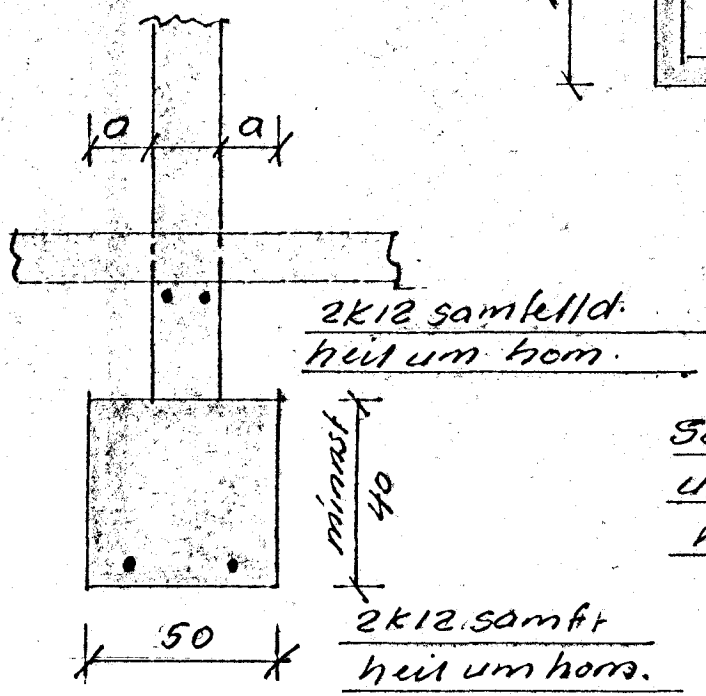
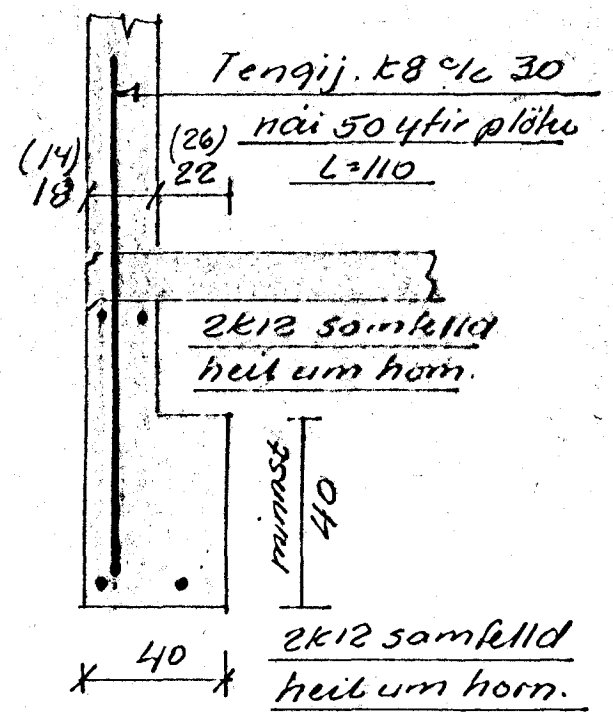


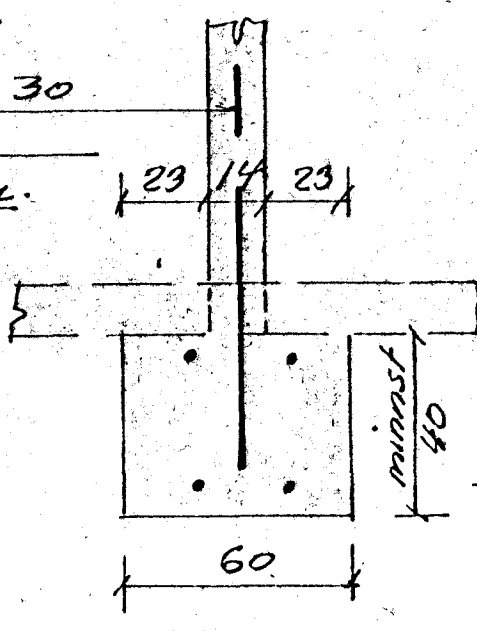
Litveggi L1 (L3)

Innveggi L2

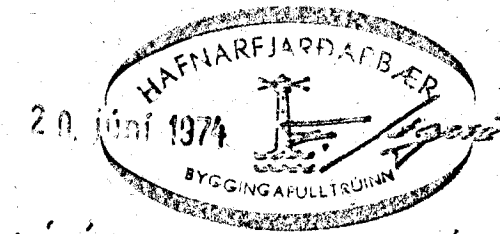
Jambending: sjá 2bl.



Sökklar mega ná í fullri breidd upp að gollplötu, ef slíkt reynist ódýrara



Mest álag á grunn verður minna en 3kólens Grótd fyrir kjallara í hraungröt, sem síðan er vandlega réttþjappad með vibróvaltrara. Í sökklara og gollplötu, 12cm, notist slappa B150 (5120).



Benedikt B. Sigurðsson		verkt.
Breiðvangur nr. 24		
M.	1:50	Sökklar.
D.	maí '74	
Nr.	61	Bun. B. Sigurðsson