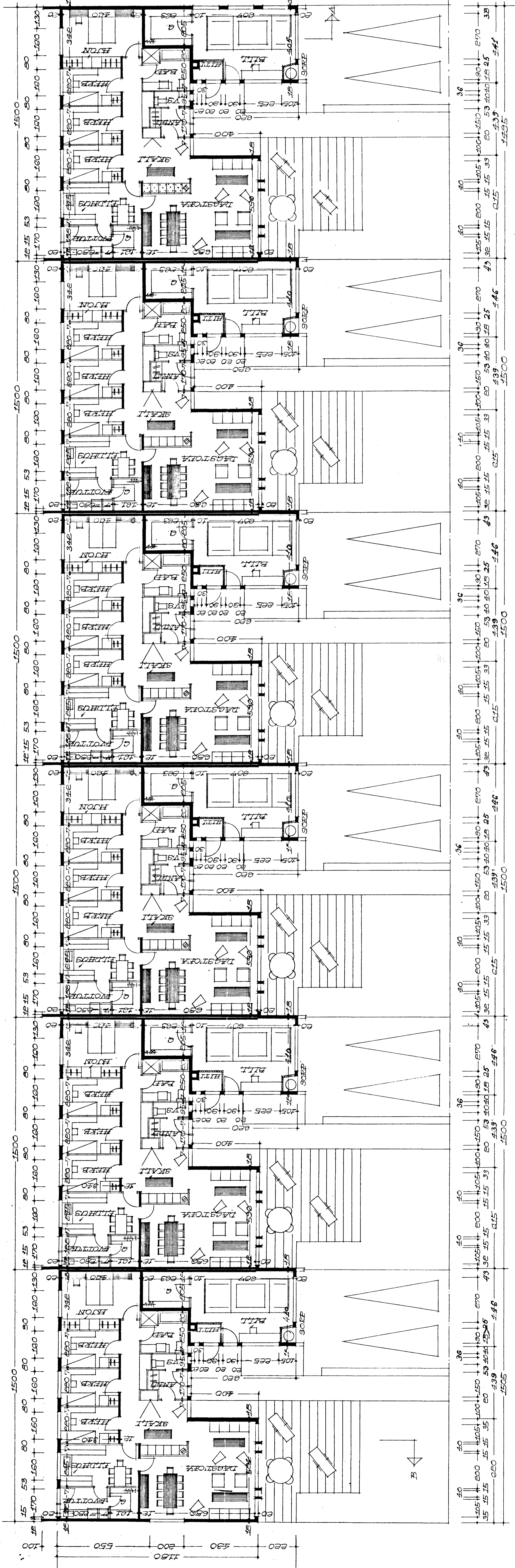
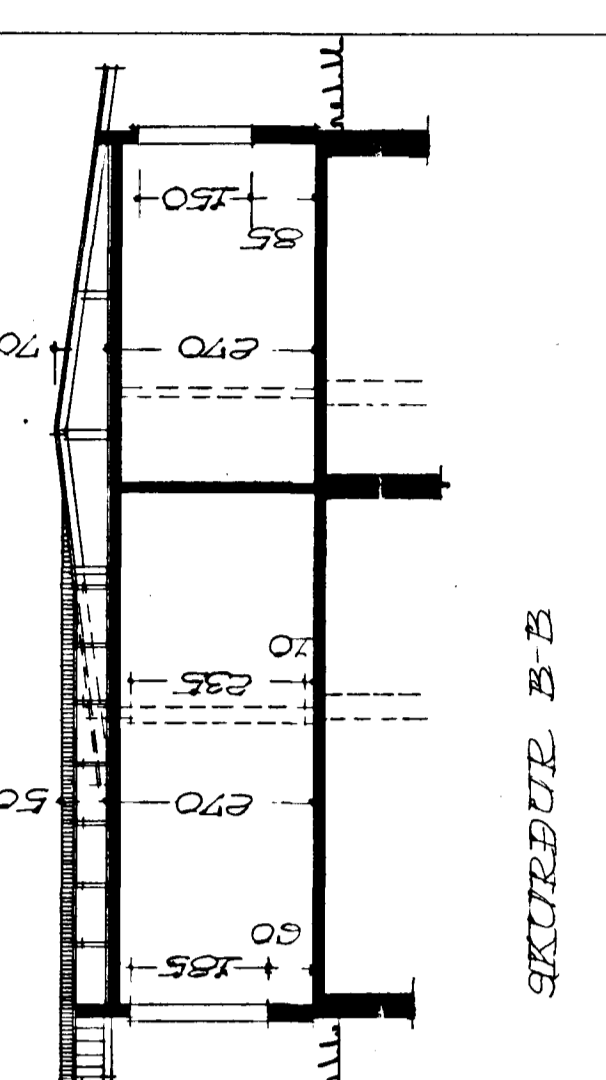
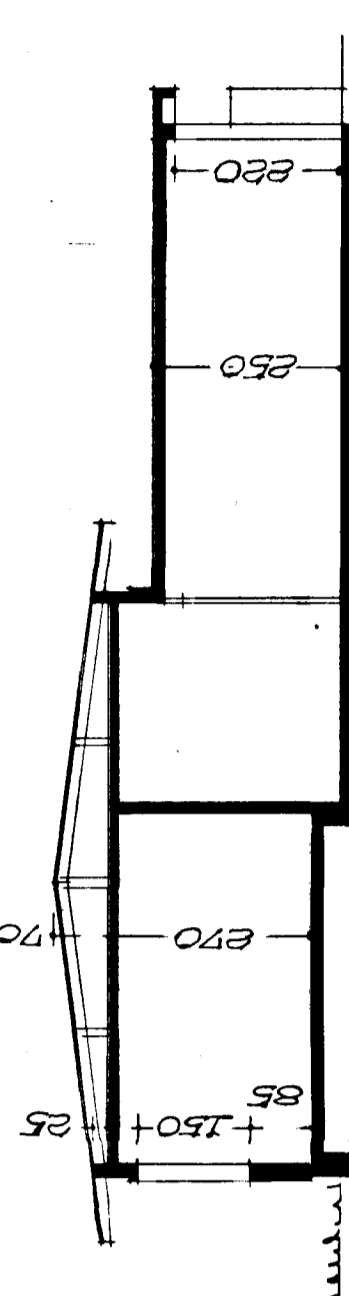


BREIÐVANGUR NR. 27-29-31-33-35-37 M. 1:100

Samþykkt á fundi byggingar-  
nefndar þ. 13. 7. 1923

BYGGINGARFRUMI  
I HAFNARFIRÐI  
Sýslu Árnadóttur

Veigja byggingarkerfi skulu vera  
úr stálm



Úr Gildi

ÁSTODDEND M. 1:500

REIÐKLEIÐIK I JÚLÍ 1923  
Sýslu Árnadóttur