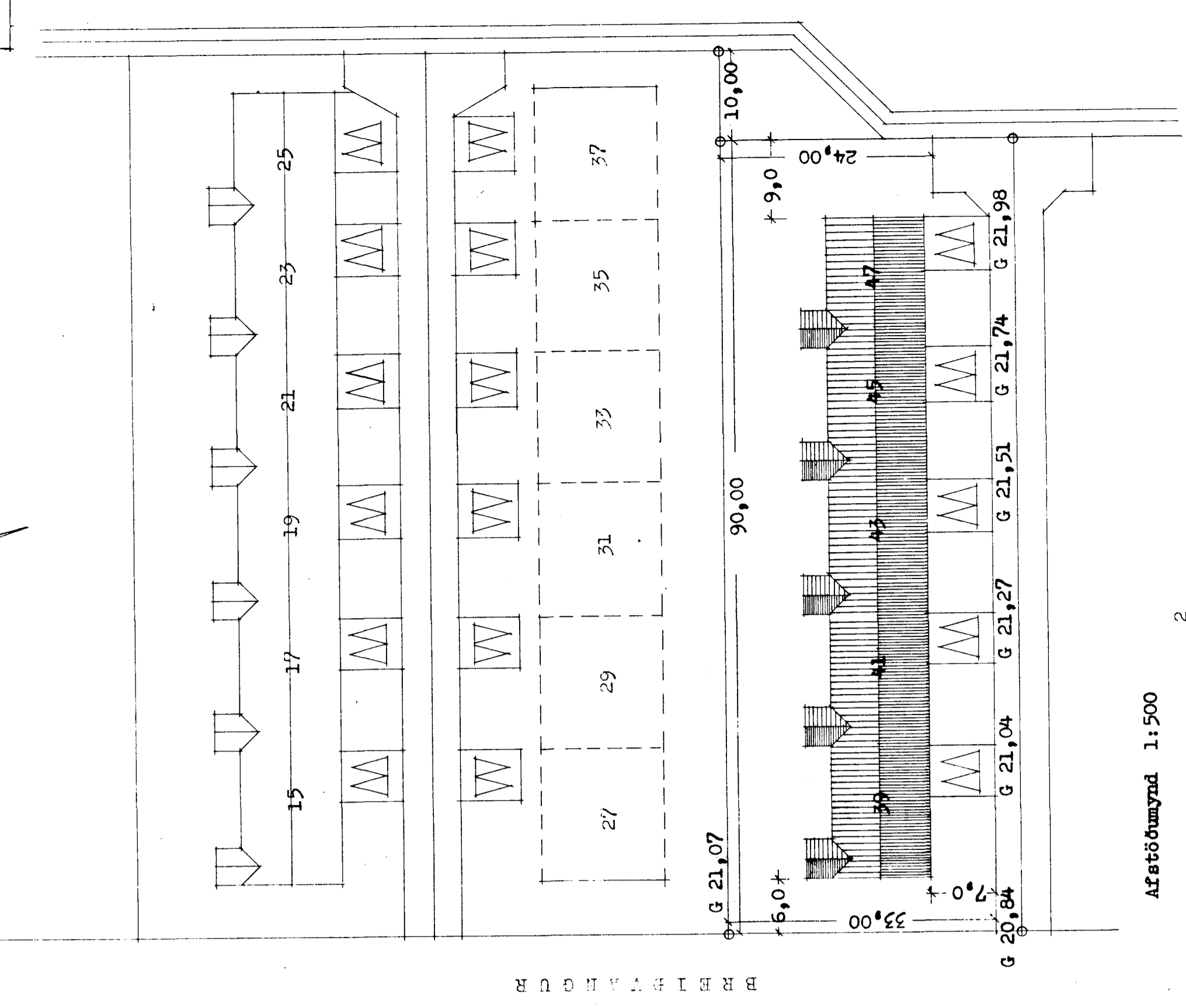
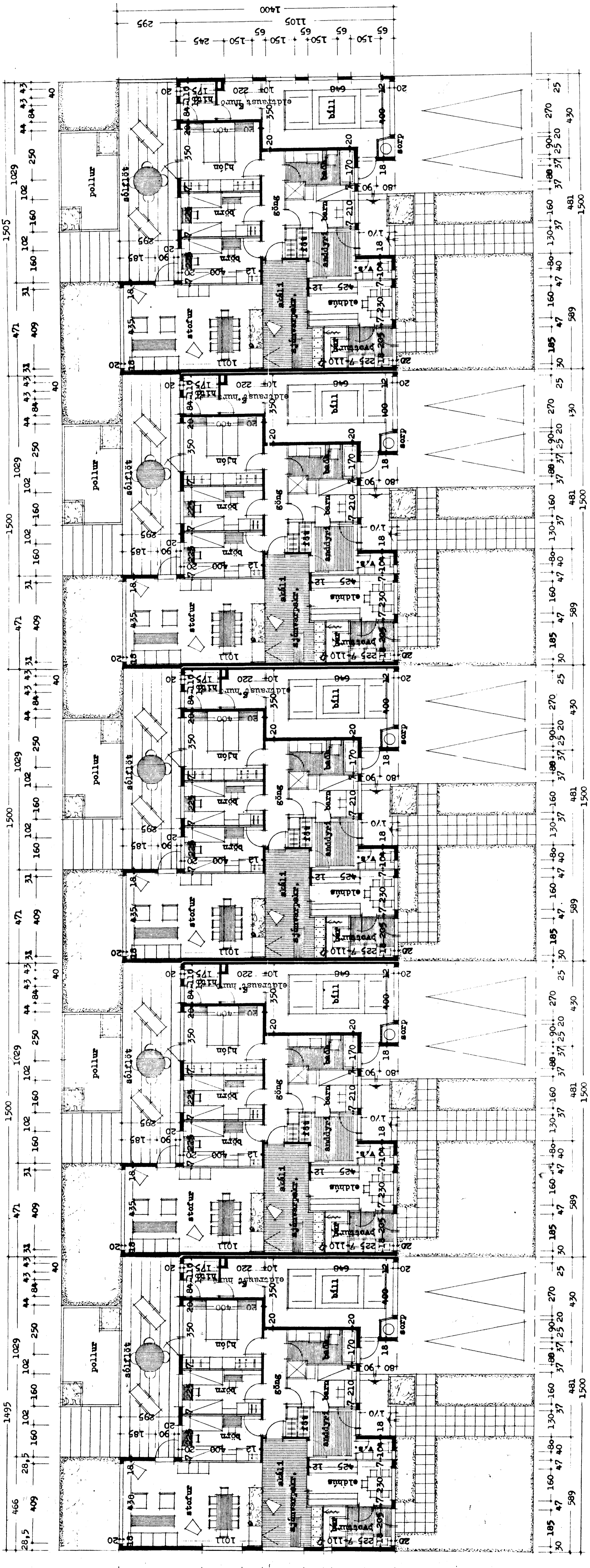


BRÉIÐVANGUR NR. 39 - 41 - 43 - 45 - 47
HAFNARFIRÐI M 1:100



BRÉIÐVANGUR

Afstöðmynd 1:500
 Flatarmál húss 157,43 m.²
 Flatarm. blísk. og el. 34,05 m.²

Reykjavík 1. júní 1973

Samþykkt á fundi byggingar-
 nefndar nr. 1.6.19.73
 BYGGINGAFLUTRÚINN
 I HAFNARFIRÐI
 Sýslumaðurinn