

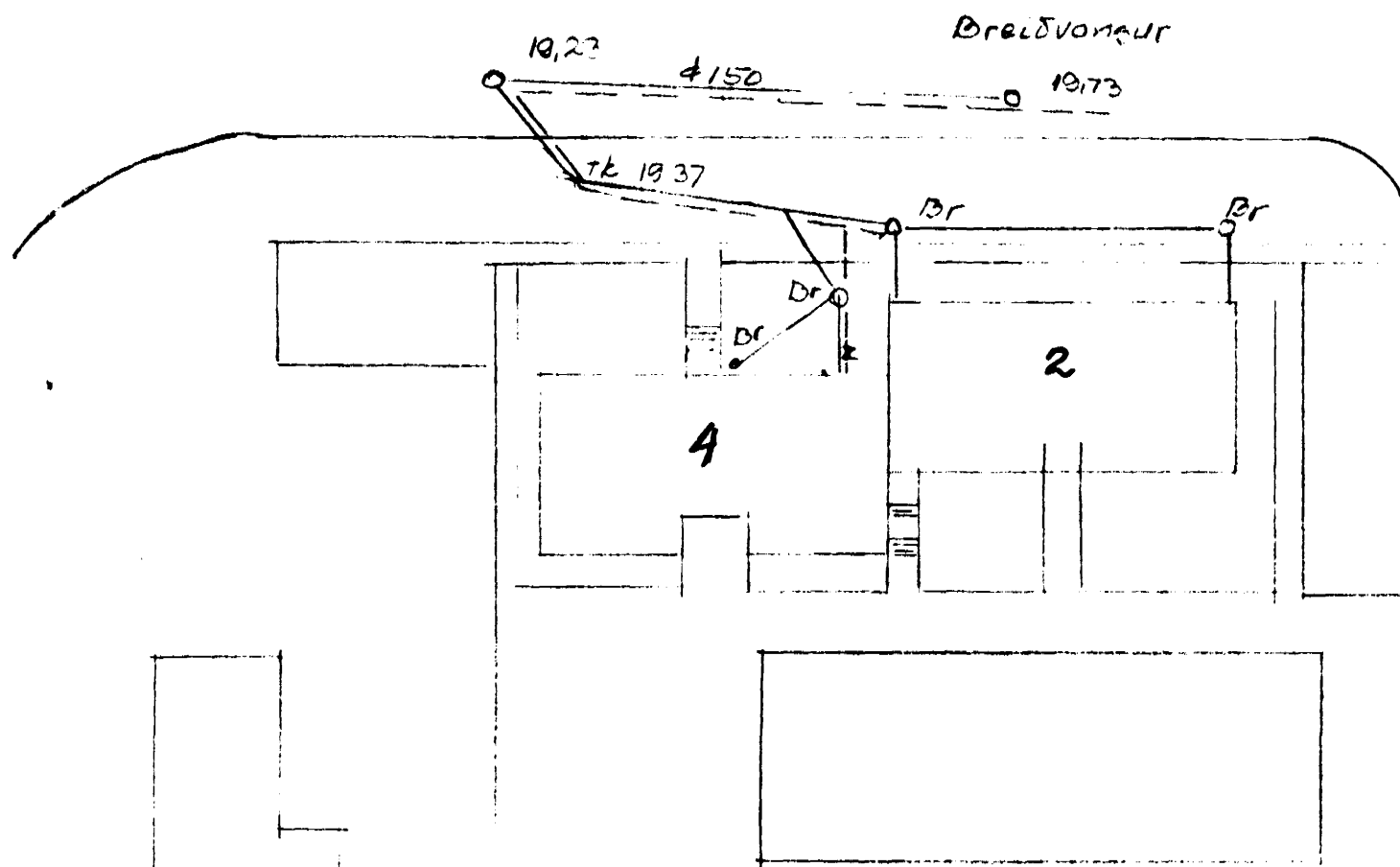
HITATAFLA

$\Delta t = 40^\circ$

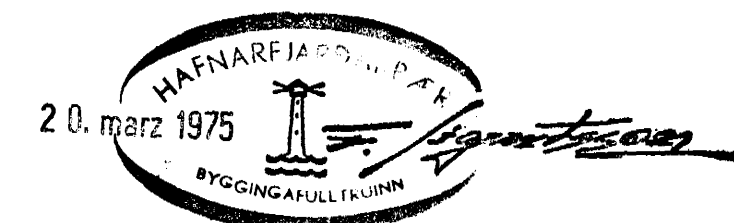
OFNAR.

Nr.	kcal/kv	Teng.	Hæð	Langd.
01	750	BC	740	
02	750	AD	740	
03	750	AD	740	
101/401	1.600	BC	590	
102/402	1.500	AD	590	
103/403	1.200	BC	740	
104/404	250	CD	—	
105/405	250	AB	—	
106/406	1200	AD	—	
107/407	1400	BC	590	—
108/408	1500	AD	590	
109/409	450	AB	740	
110/410	1200	BC	—	
111/411	380	AB	740	
112/412	600	AD	—	
113/413	250	AB	590	
114/414	750	AD	590	
115/415	250	CD	590	
116/416	1200	AC	740	
117/417	600	AC	—	
118/418	380	AB	740	
119/419	1200	AD	—	
120/420	550	CD	600	
201/301	1450	BC	590	
202/302	1300	AD	590	
203/303	1000	BC	740	
204/304	215	CD	—	
205/305	215	AB	—	
206/306	1000	AD	—	
207/307	1200	BC	590	
208/308	1300	AD	590	
209/309	400	AB	740	
210/310	1000	BC	—	
211/311	290	AB	740	
212/312	500	AD	—	
213/313	500	AD	—	

Nr.	kcal/kv	Teng.	Hæð	Langd.
213/313	200	AB	590	
214/314	1000	AD	740	
215/315	200	CD	590	
216/316	1000	AC	740	
217/317	500	AD	—	
218/318	290	AB	740	
219/319	1000	AD	740	
220/320	400	CD	600	
221/321	1200	CD	740	
321	1000	CD	—	



AFSTÖÐUMYND 1:500



Jon E. Þorv.

BREIDVANGUR 4	8.H.	74
		1200
Kvikun E.G. Jóns febraú.		TÆM.Nr. 7401 BL 10.