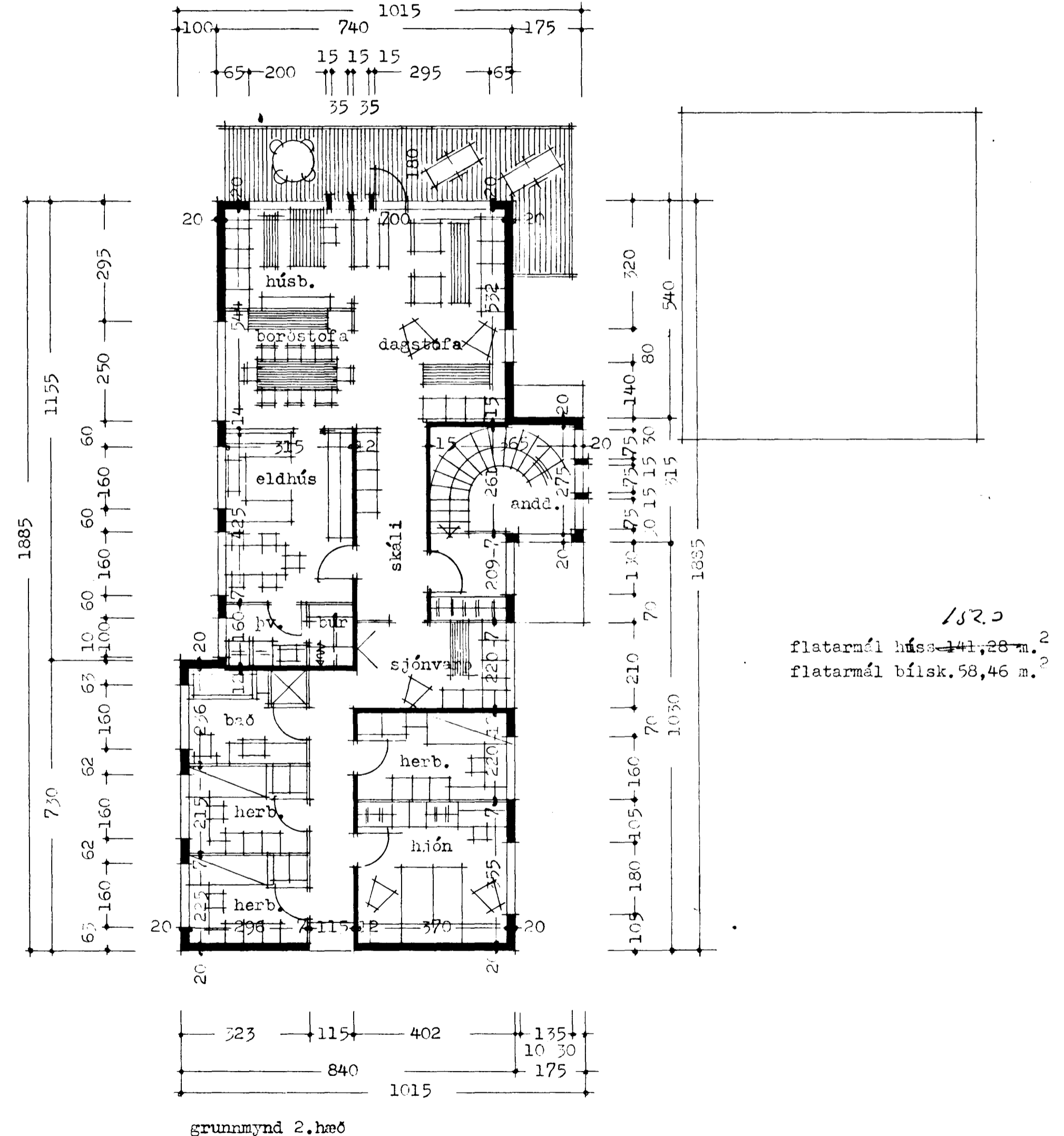
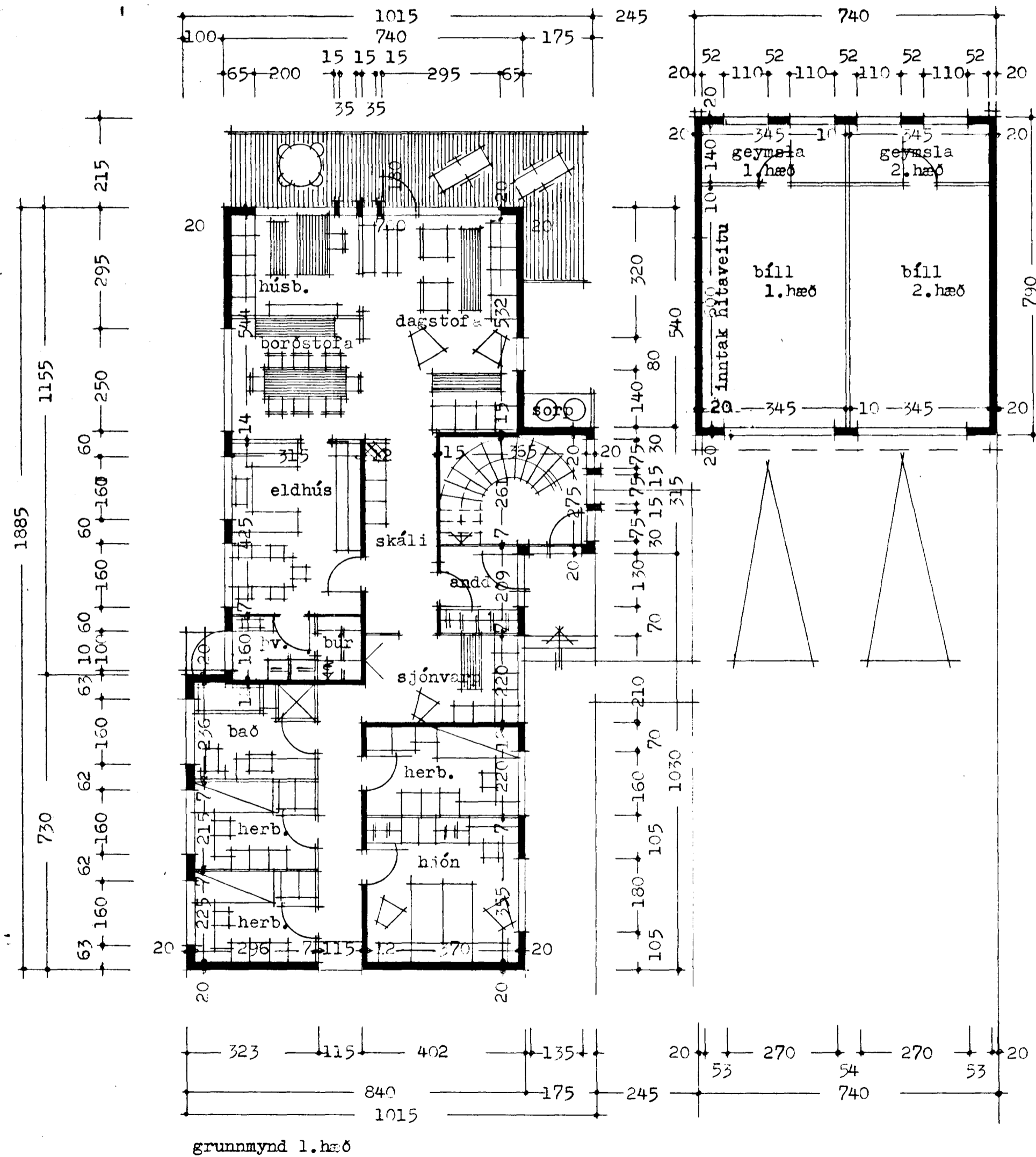


Byggt á fundi bygginga-
nefndar þ. 19. 1976
BYGGINGARFULLTRÚINN
Í HAFNARFIRDI
Einar Sigurðsson



1820
flatarmál húsa 141,28 m.²
flatarmál bílsk. 58,46 m.²

Reykjavík í ágúst 1976

Einar Sigurðsson