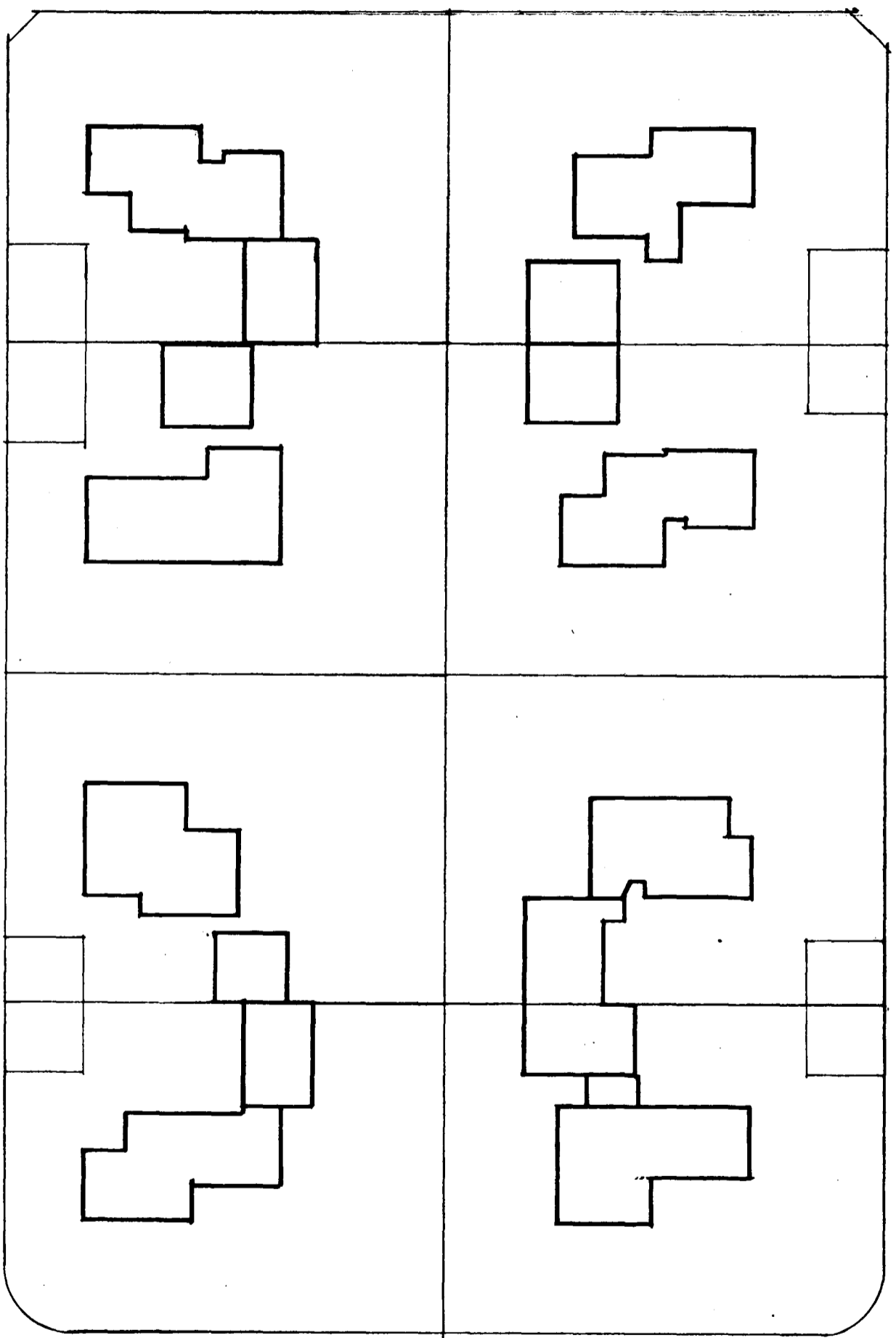
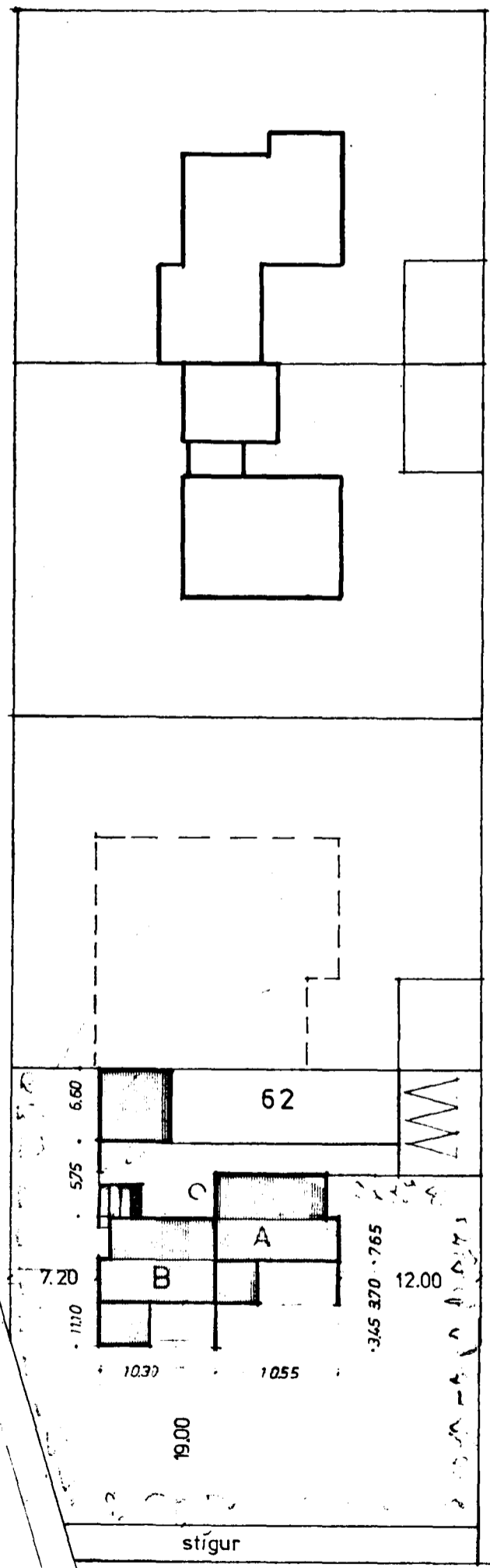
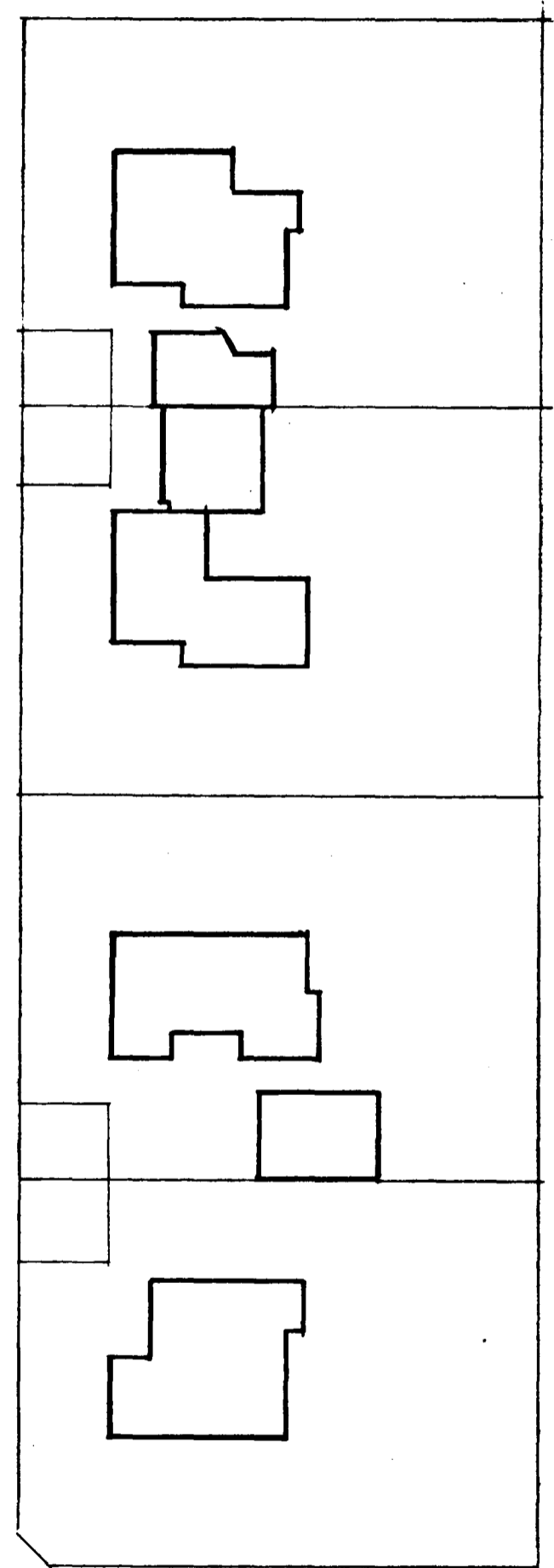


Samþykkt á fundi bygginga-
nefndar þ. 16.11.1989
DYGGINGAFULLTRÚINN
Í HAFNARFIRÐI
[Signature]



breiðvangur



stærðir

| | |
|-----------|-----------------------|
| hús A | |
| neðri hæð | 89.34 m ² |
| efri hæð | 66.81 m ² |
| | 156.15 m ² |
| bílskúr | 21.40 m ² |
| hús B | |
| neðri hæð | 91.43 m ² |
| efri hæð | 67.57 m ² |
| | 159.00 m ² |
| bílskúr | 21.40 m |

| | | | |
|---|--|----------|------------|
| happdrætti das | | | |
| breiðvangur 62 hafnarfirði | | | |
| afstöðumynd | | mál 1500 | DR 15.5.89 |
| | | 1.3.77 | 02.11.89 |
| halldór guðmundsson arkitekt fa. s 83262 <i>[Signature]</i> | | | |