

NR. 01 3 STK.

NR. 02 1 STK.

NR. 03 1 STK.
M. SVALAHURÐ.

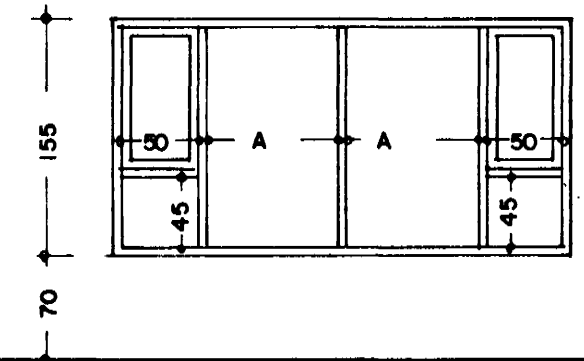
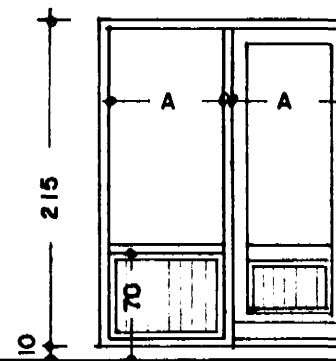
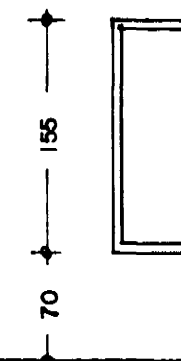
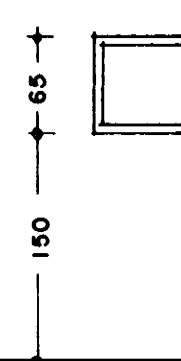
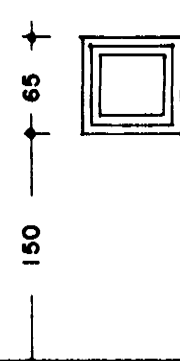
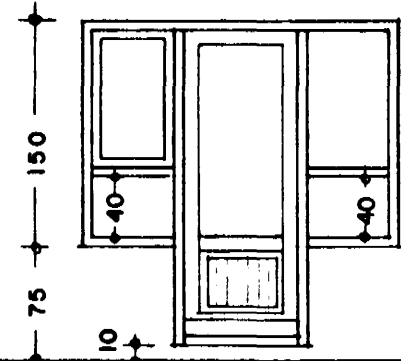
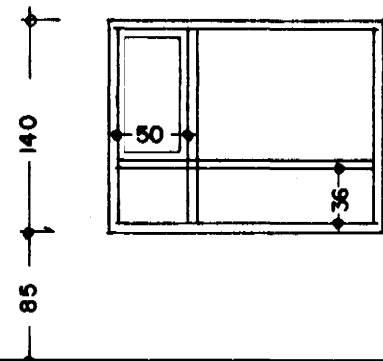
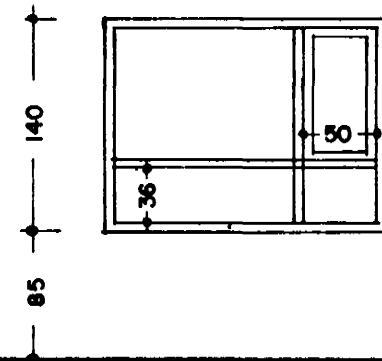
NR. 04 1 STK.

NR. 05 1 STK.

NR. 06 2 STK.

NR. 07 1 STK.
M. SVALAHURÐ.

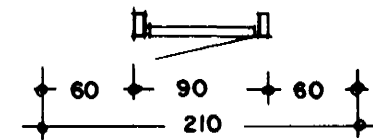
NR. 08 1 STK.



GÖLFLÍNA.

185

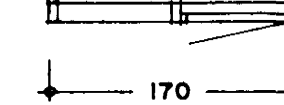
185



65

65

60



300

NR. 09 2 STK.

NR. 10 1 STK.

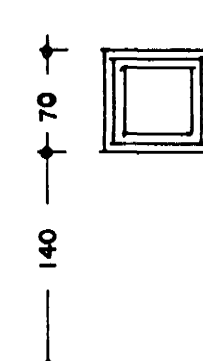
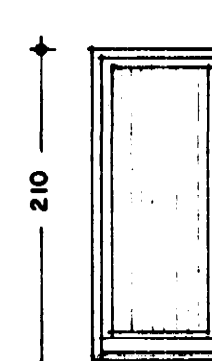
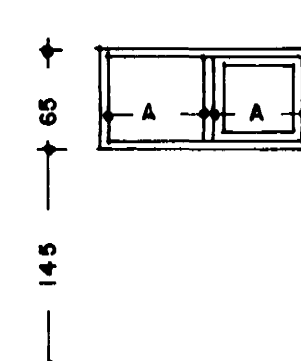
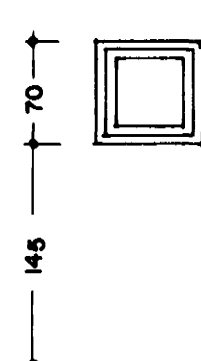
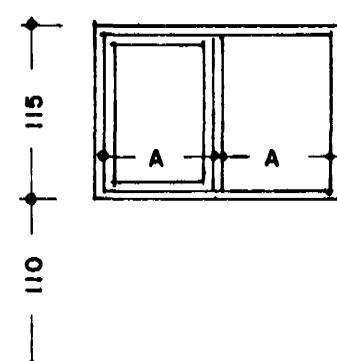
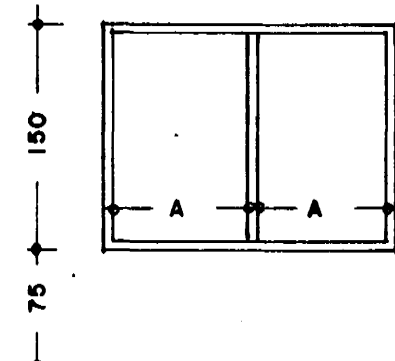
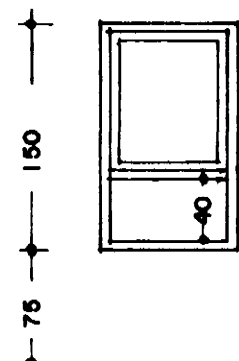
NR. 11 1 STK.

NR. 12 1 STK.

NR. 13 2 STK.

NR. 14 1 STK.
BÍLSKÚRSHURÐ.

NR. 15 1 STK.



90

196

165

70

140

90

70

Byggingafulltrúi Hafnarfjarðar
Ágreitt þann
07 SEPT. 1998
Sigurbjartur Halldórsson

BREKKUHLÍÐ 7 HAFNARFIRÐI. GLUGGATEIKN.

VERK. NR. 193
TEIKN. NR. 204

DAGS. 3.-8.-1998 MÁL. 1:50
BREYTT.

JON GUÐMUNDSSON ARKITEKT

VINNUSTOFA.: SKÚLAGÖTU 63 REYKJAVÍK. SÍMI. 552-5055