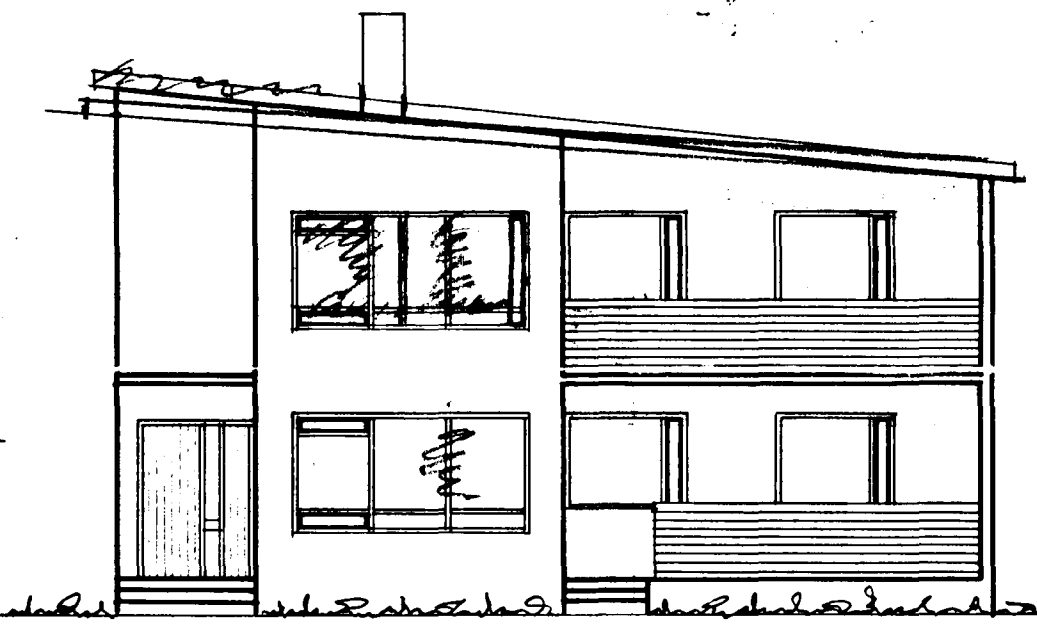


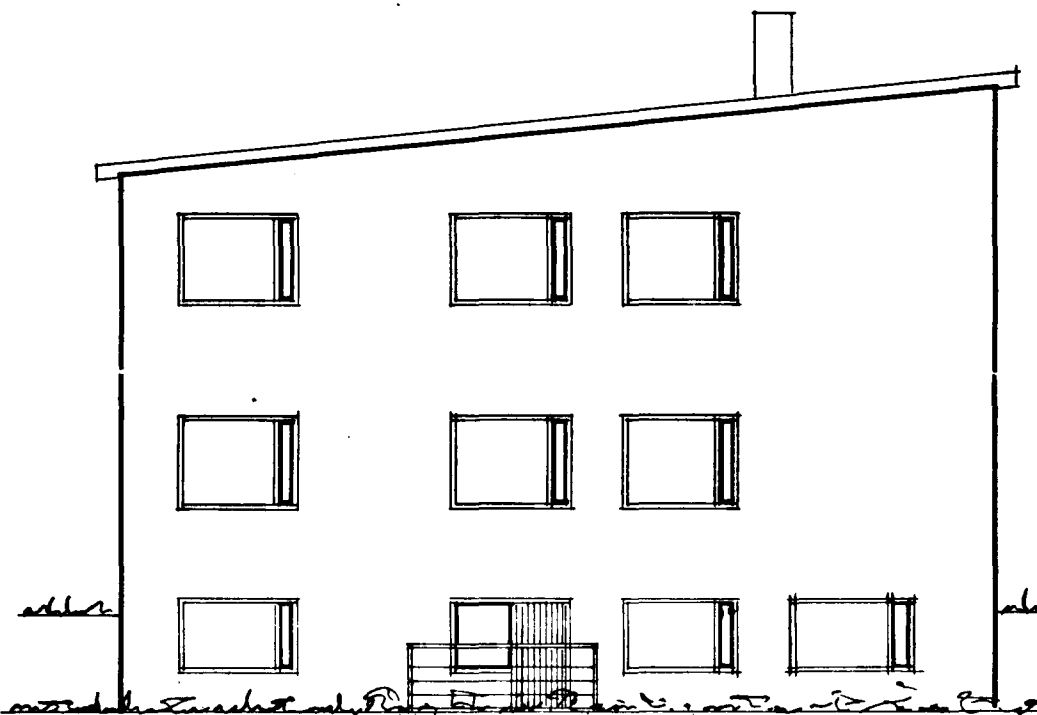
EFRI-HÆÐ



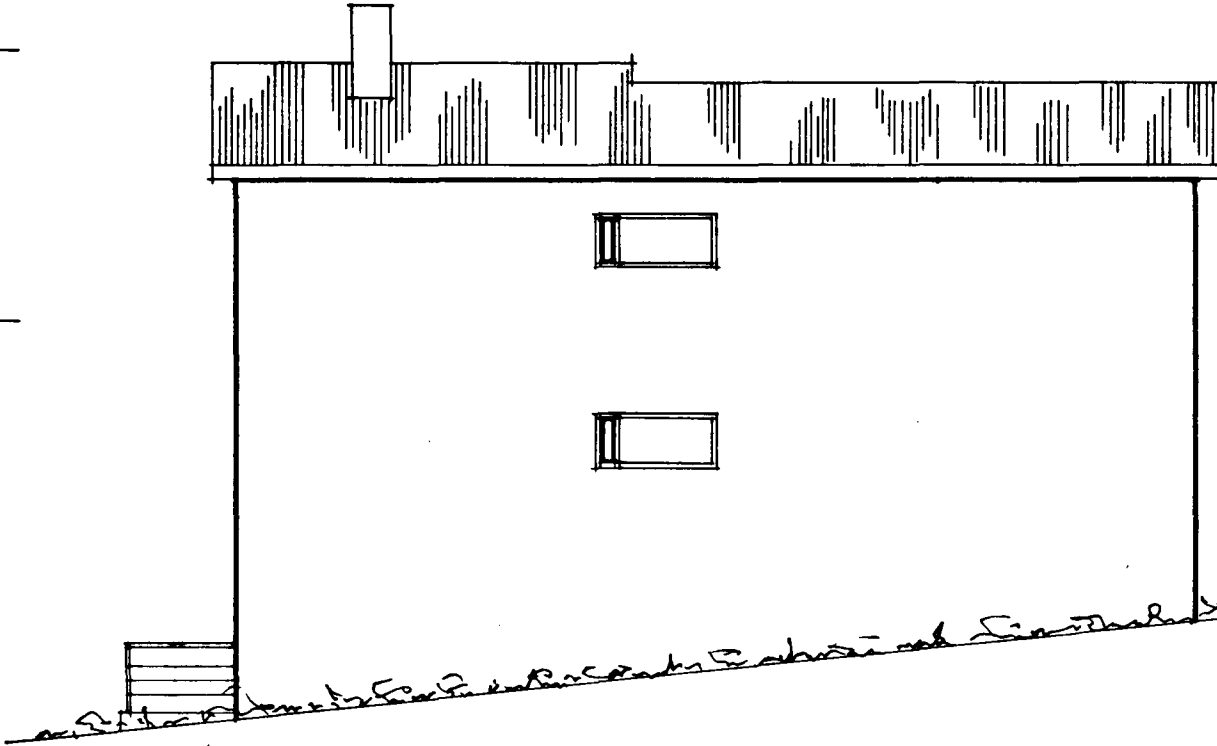
NORÐ-VESTUR



SUÐ-VESTUR



NORÐ-AUSTUR



SUÐ-AUSTUR

*Þingulinn Jóhann Guðmundsson*  
*Húsnám*  
*Haldór Guðmundsson*  
*gluggapóstur*  
*10/7 '64*

KJALLRAGÖLF SETT Í 26.40

*S.P.* 3/10 '62

*K.J.* 1140 x 490 x 2.30 = 128  
*J.H.* 57 + 74 x 2.70 = 354  
*D.H.* 57 + 74 x 2.30 = 432

914

breitt í júlí 1962

*Sigmundur Guðmundsson*  
*Haldór Guðmundsson*

HÚSNÆÐISMÁLASTOFNUN RÍKISINS	
GRUNNMYND 2 HÆÐAR MÁL 1:50	TVÍBÝLISHÚS
ÚTLIT MÁL 1:100	VERK 116 ES
JUNI 1959	

magnus i ingvarsson