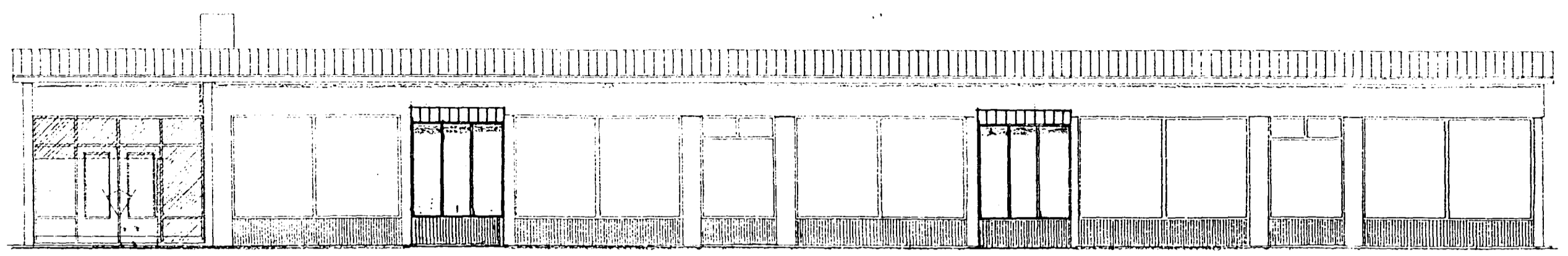
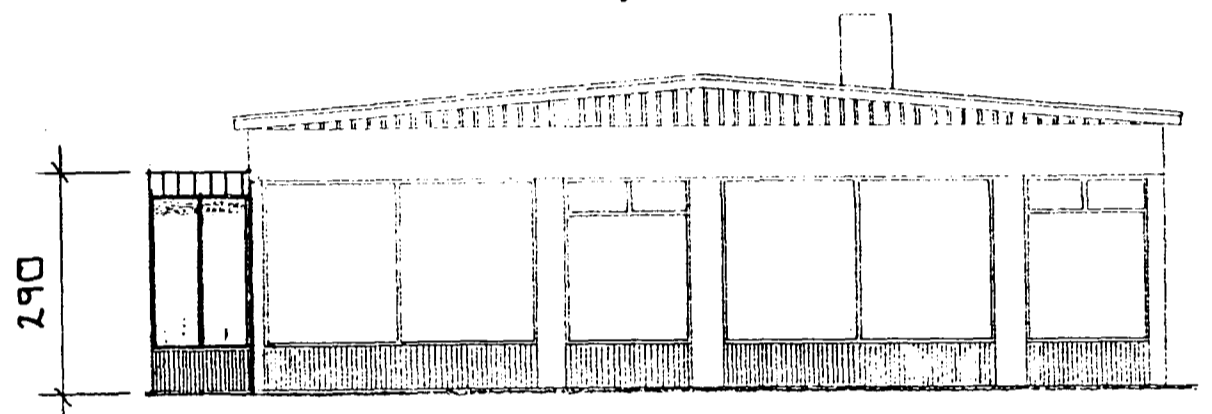


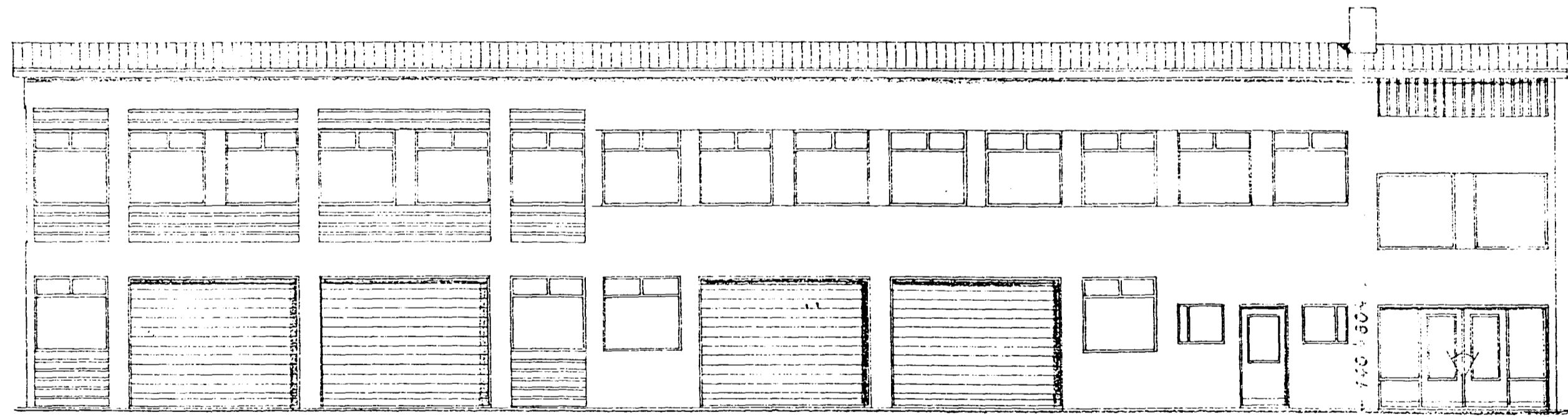
Samþykkt á fundi bygginga-  
nefndar þ. 23/9 1954  
BYGGINGAFULLTRÚINN  
Í HAFNARFIRÐI



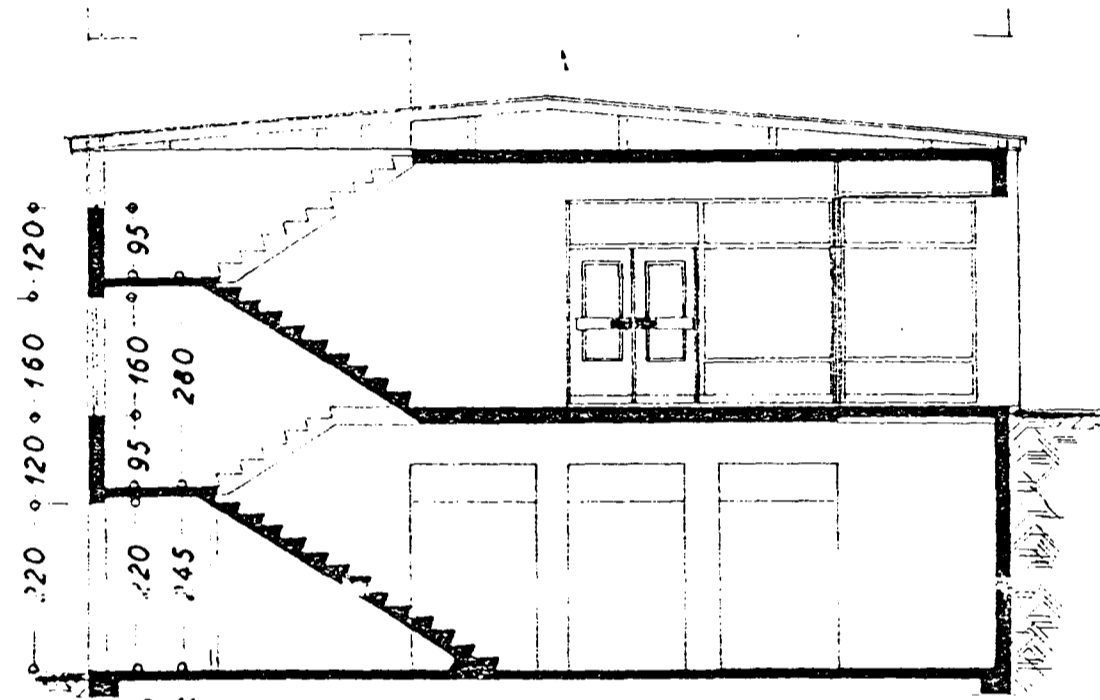
Suður - að STAKKAHRAUNI -



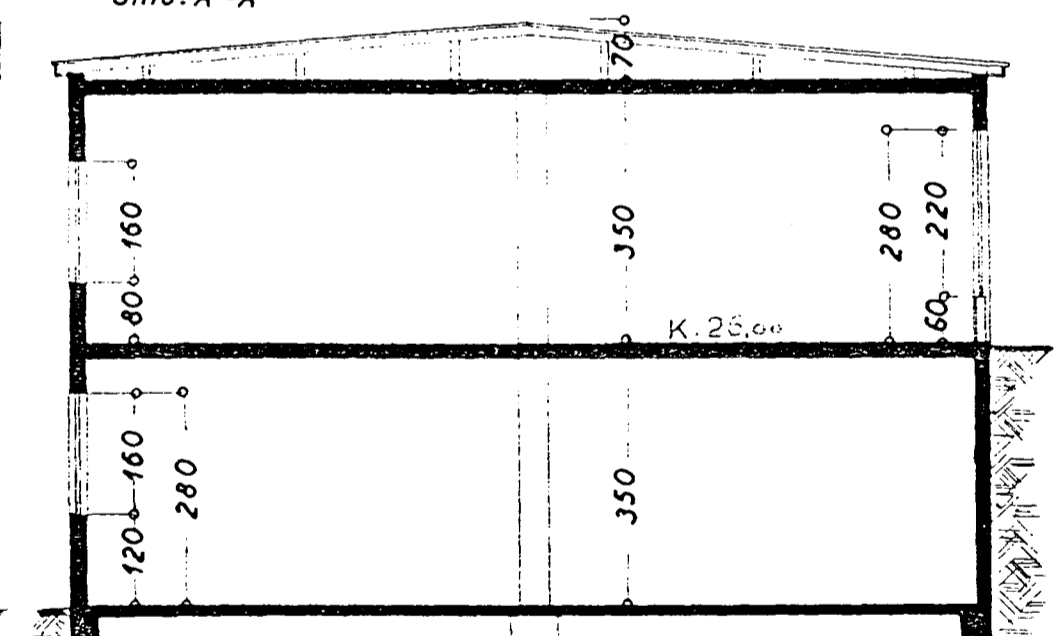
Austur - að REYKJANESBRAUT -



Norður



Snið: A-A



Snið: B-B

DLÖÐ MERKT S OG 6.

STÆRD I. áfangi :  
385,8 m<sup>2</sup> 2.700,6 m<sup>3</sup>  
Bráðabirgðapak 135,0 m<sup>3</sup>  
2.835,6 m<sup>3</sup>

DALSHRAUN NR 11

I. AFANGI  
Útlit } 1:100  
Snið }

LÉTT OPID VINDFRANG  
GERT Í SEPT. '94 (ÞEYTT INNÁ UPPH. TEIKN. F. SIG.)  
ÞÓR GÍSLASON  
BYGGINGATEKNIFRÆÐINGUR

*Þór Gíslason*

Hafnarfirði 2. mars 1968  
F. Sigurðsson